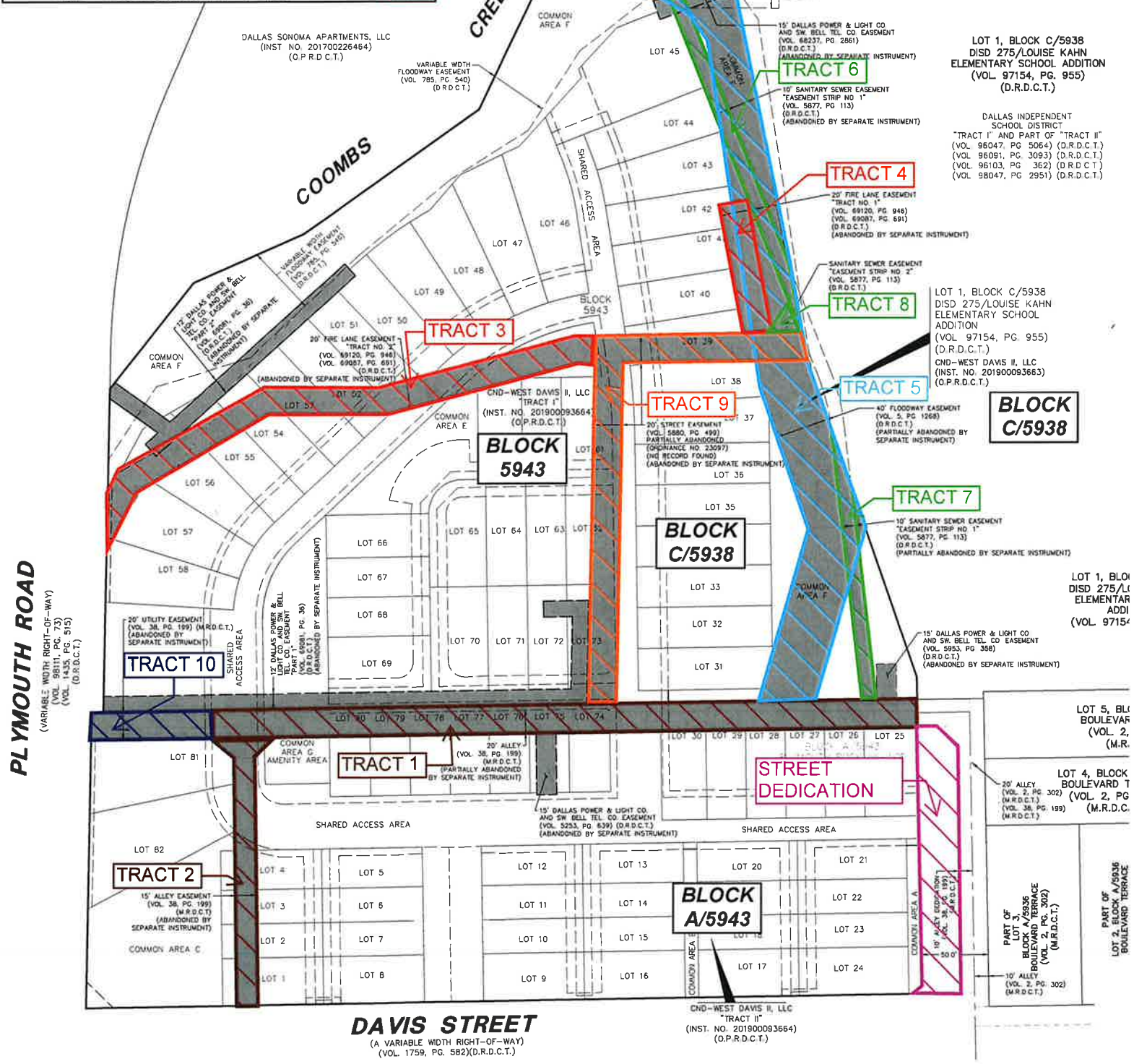


LEGEND:

Tract 1 – Alley Abandonment(10,607 sq ft)	
Tract 2 – Alley Easement Abandonment(3,226 sq ft)	
Tract 3 – Fire Lane Easement Abandonment(8,047 sq ft)	
Tract 4 – Fire Lane Easement Abandonment(1,986 sq ft)	
Tract 5 – Floodway Easement Abandonment(21,399 sq ft)	
Tract 6 – Sanitary sewer Abandonment(1,818 sq ft)	
Tract 7 – Sanitary sewer Abandonment(294 sq ft)	
Tract 8 – Sanitary sewer Abandonment(2,424 sq ft)	
Tract 9 – Street Easement Abandonment(8,192 sq ft)	
Tract 10 – Utility Easement Abandonment(1,870 sq ft)	
Street Right of Way Dedication(5,781 sq ft)	



PLYMOUTH ROAD
(VARIABLE WIDTH RIGHT-OF-WAY)
(VOL. 9811, PG. 73)
(VOL. 1455, PG. 515)
(D.R.D.C.T.)

DAVIS STREET
(A VARIABLE WIDTH RIGHT-OF-WAY)
(VOL. 1759, PG. 582)(D.R.D.C.T.)

LOT 1, BLOCK C/5938
DISD 275/LOUISE KAHN
ELEMENTARY SCHOOL ADDITION
(VOL. 97154, PG. 955)
(D.R.D.C.T.)

DALLAS INDEPENDENT
SCHOOL DISTRICT
"TRACT I" AND PART OF "TRACT II"
(VOL. 95047, PG. 5064) (D.R.D.C.T.)
(VOL. 95091, PG. 3093) (D.R.D.C.T.)
(VOL. 96103, PG. 362) (D.R.D.C.T.)
(VOL. 98047, PG. 2951) (D.R.D.C.T.)

LOT 1, BLOCK C/5938
DISD 275/LOUISE KAHN
ELEMENTARY SCHOOL
ADDITION
(VOL. 97154, PG. 955)
(D.R.D.C.T.)
CND-WEST DAVIS II, LLC
(INST. NO. 201900093663)
(O.P.R.D.C.T.)

**BLOCK
C/5938**

LOT 1, BLO
DISD 275/L
ELEMENTAR
ADDI
(VOL. 97154

LOT 5, BL
BOULEVARD T
(VOL. 2, PG
(M.R.

LOT 4, BLOCK
BOULEVARD T
(VOL. 2, PG
(M.R.D.C.T.)

PART OF
LOT 3, BLO
BOULEVARD TERRACE
(VOL. 2, PG. 302)
(M.R.D.C.T.)

PART OF
LOT 2, BLOCK A/5938
BOULEVARD TERRACE
(VOL. 2, PG. 302)
(M.R.D.C.T.)

**BLOCK
A/5943**

CND-WEST DAVIS II, LLC
"TRACT II"
(INST. NO. 201900093664)
(O.P.R.D.C.T.)