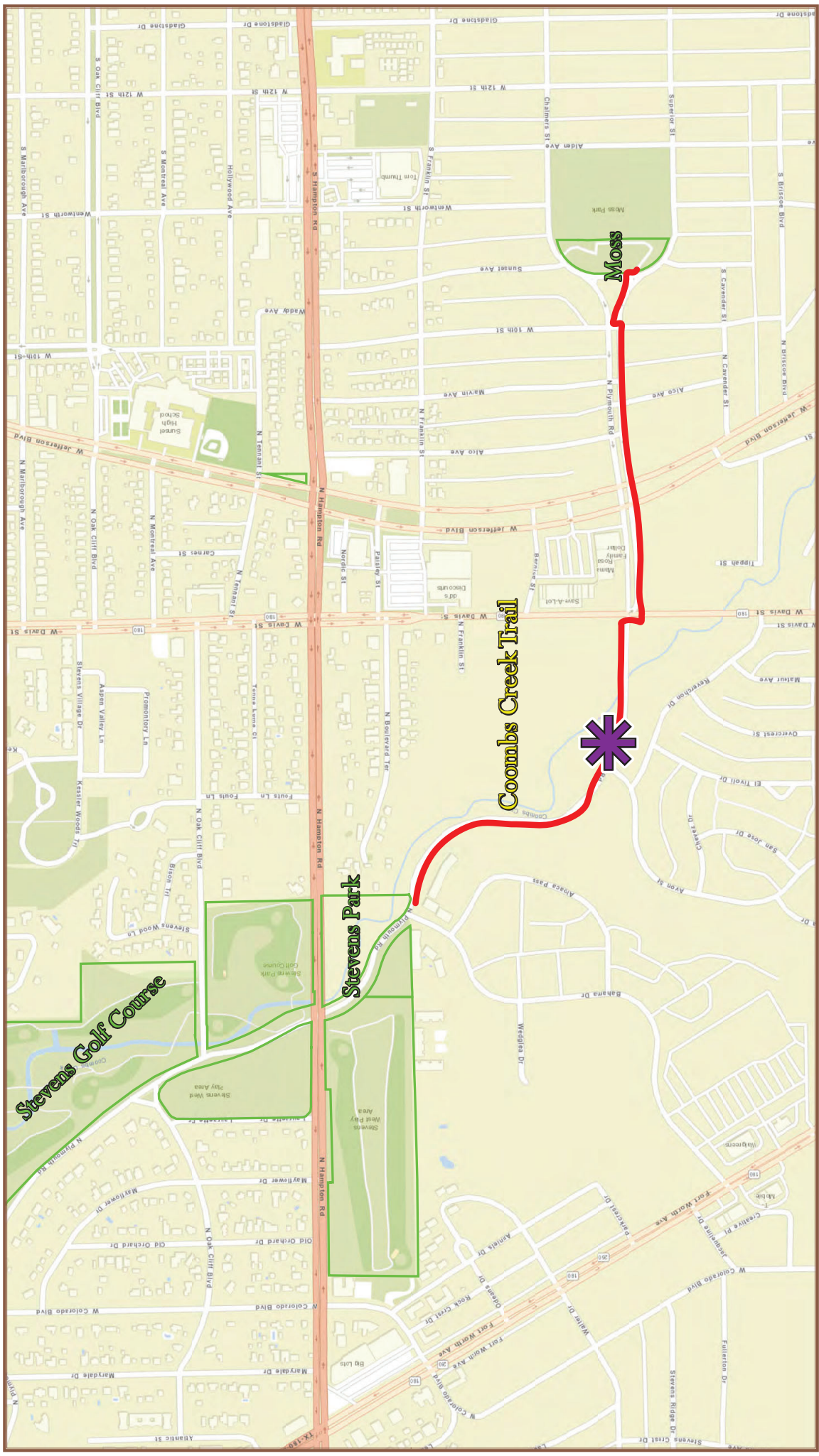


Southern Design District Mobility Connection



1 inch = 500 feet

Note: general perimeter project boundaries shown. Planned gateway or wayfinding signage may be located outside, in close proximity, to these boundaries.



Coombs Creek Trail
 (N Plymouth Rd to Sunset Av)

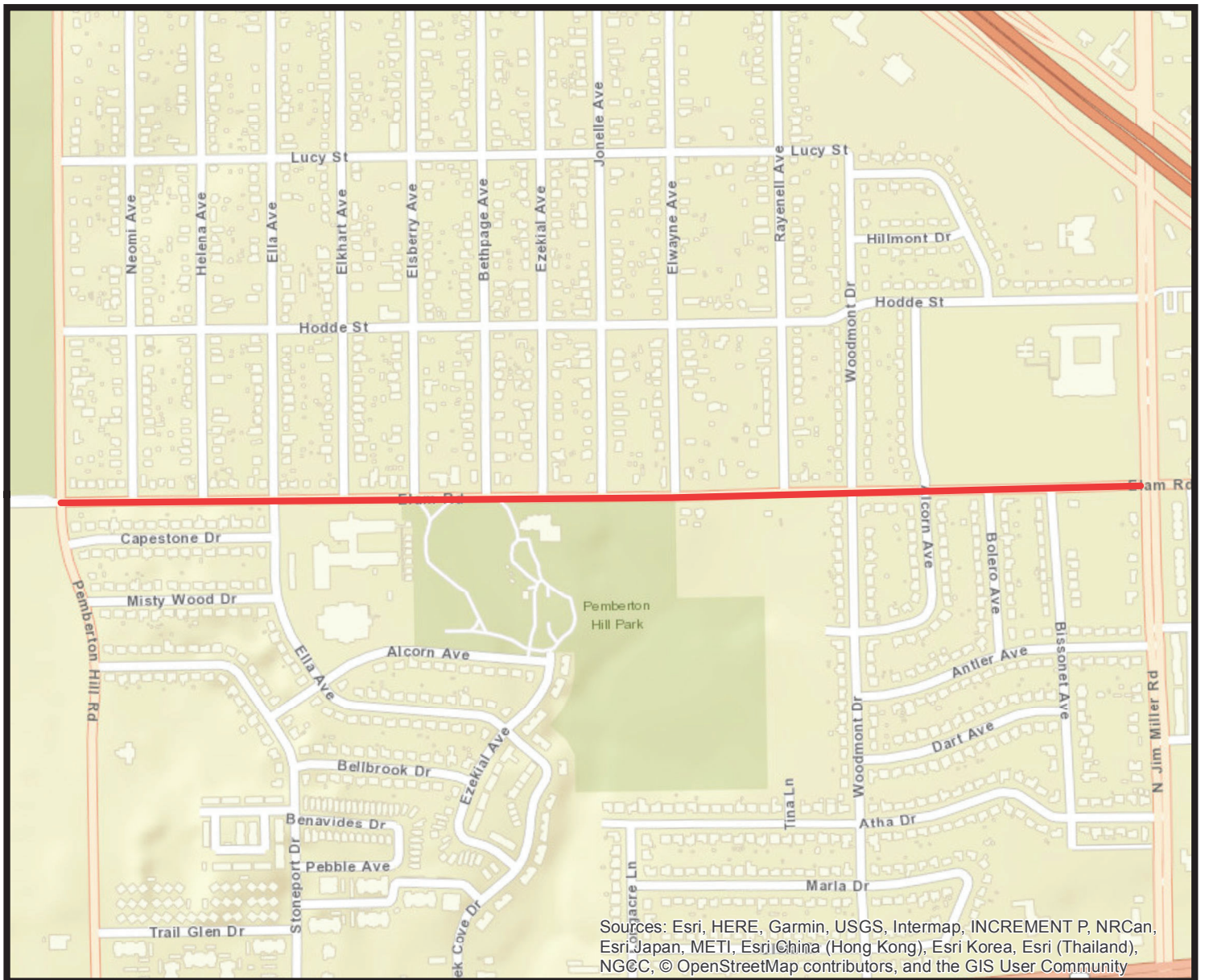


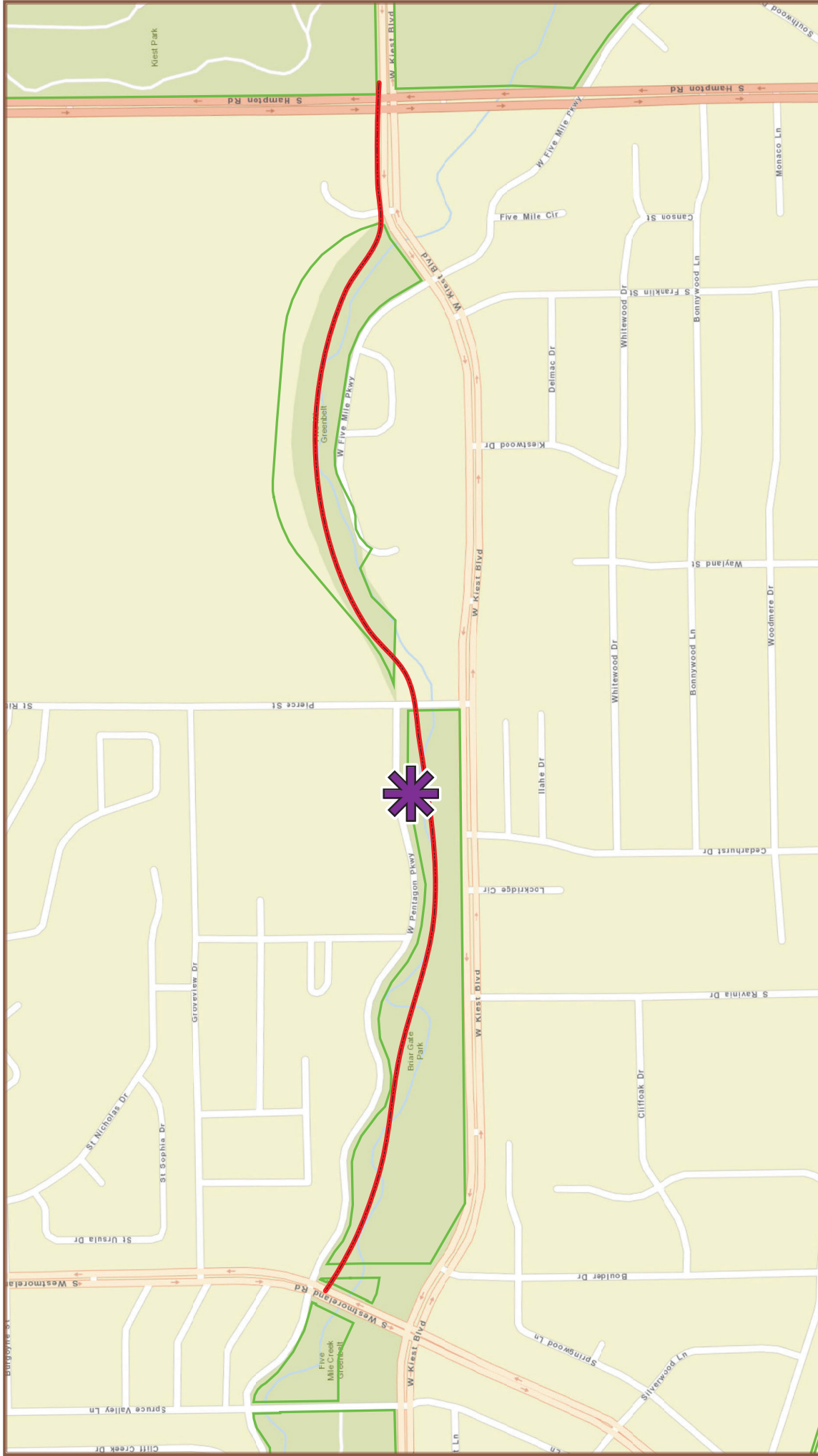
Elam Safe Routes to School

Council District: 5, 8
MAPSCO: 57U, 57V, 58S



Elam Road Pemberton Hill to Jim Miller

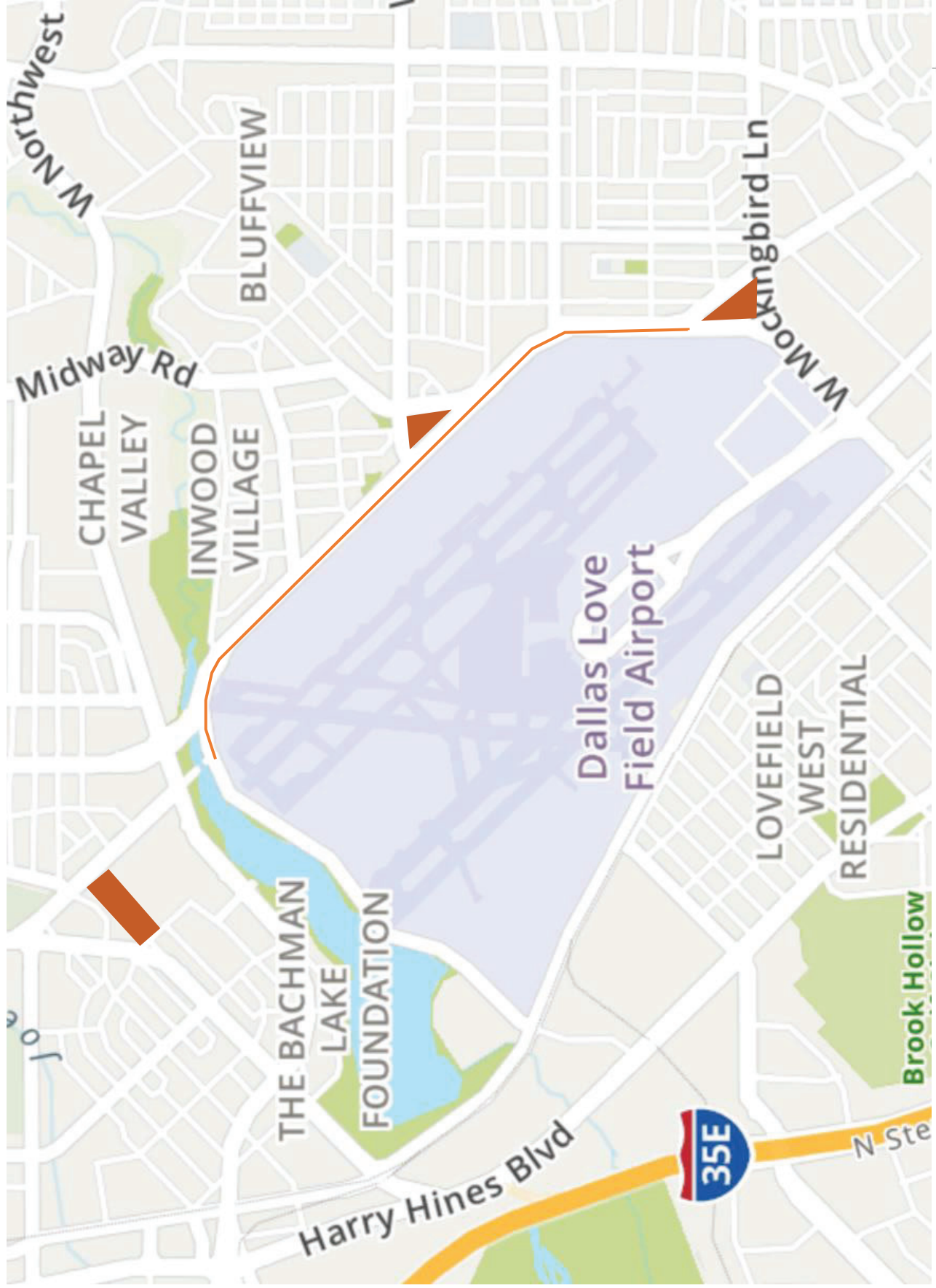




Five Mile Creek Trail
 (S Hampton Rd to S Westmoreland Rd)

District
 (3, 4)

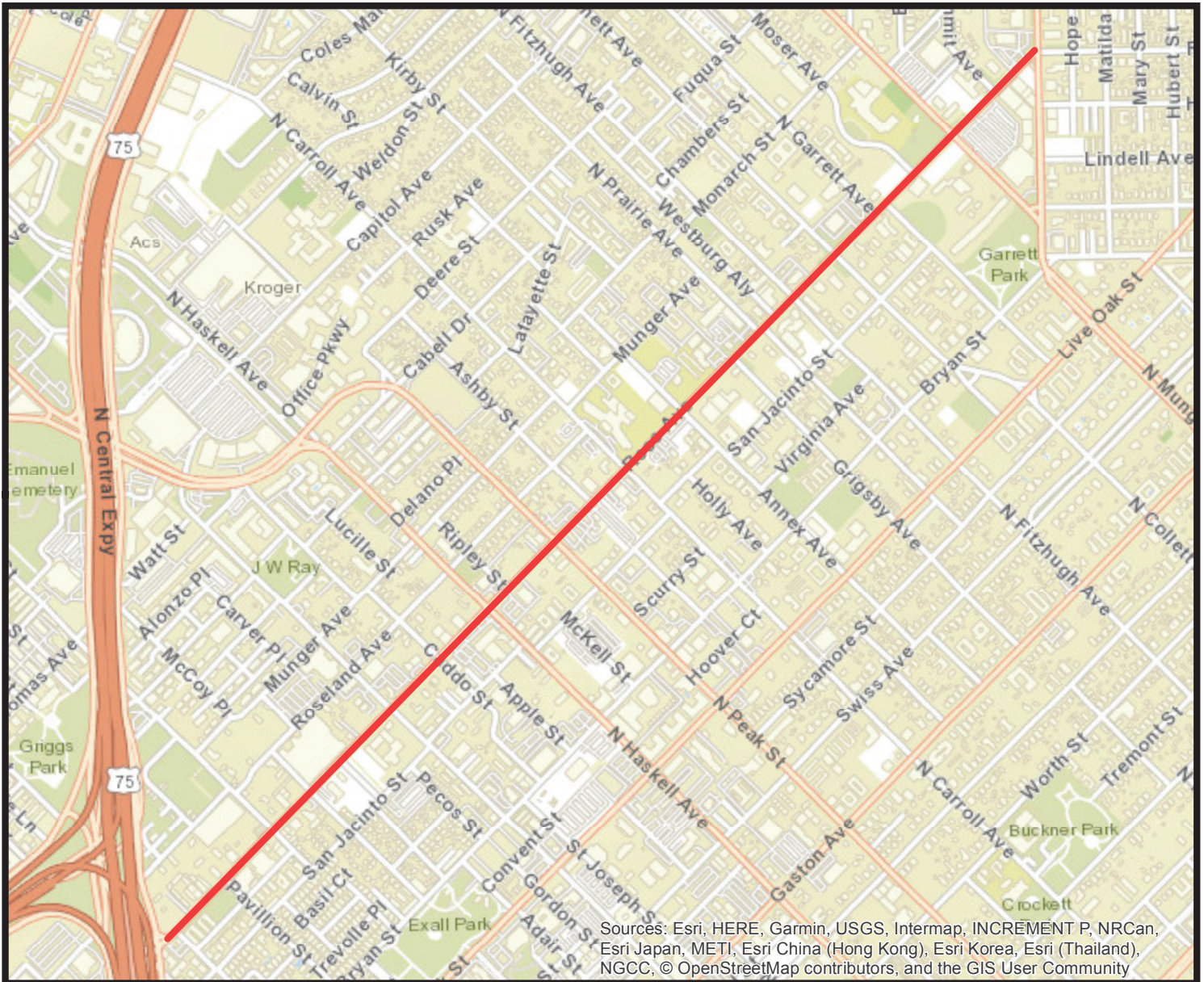




Ross Avenue Shared-Use Path

Council District: 2, 14
MAPSCO: 36W,36X,45D,45G,46A

Ross Avenue US-75 to Greenville Avenue



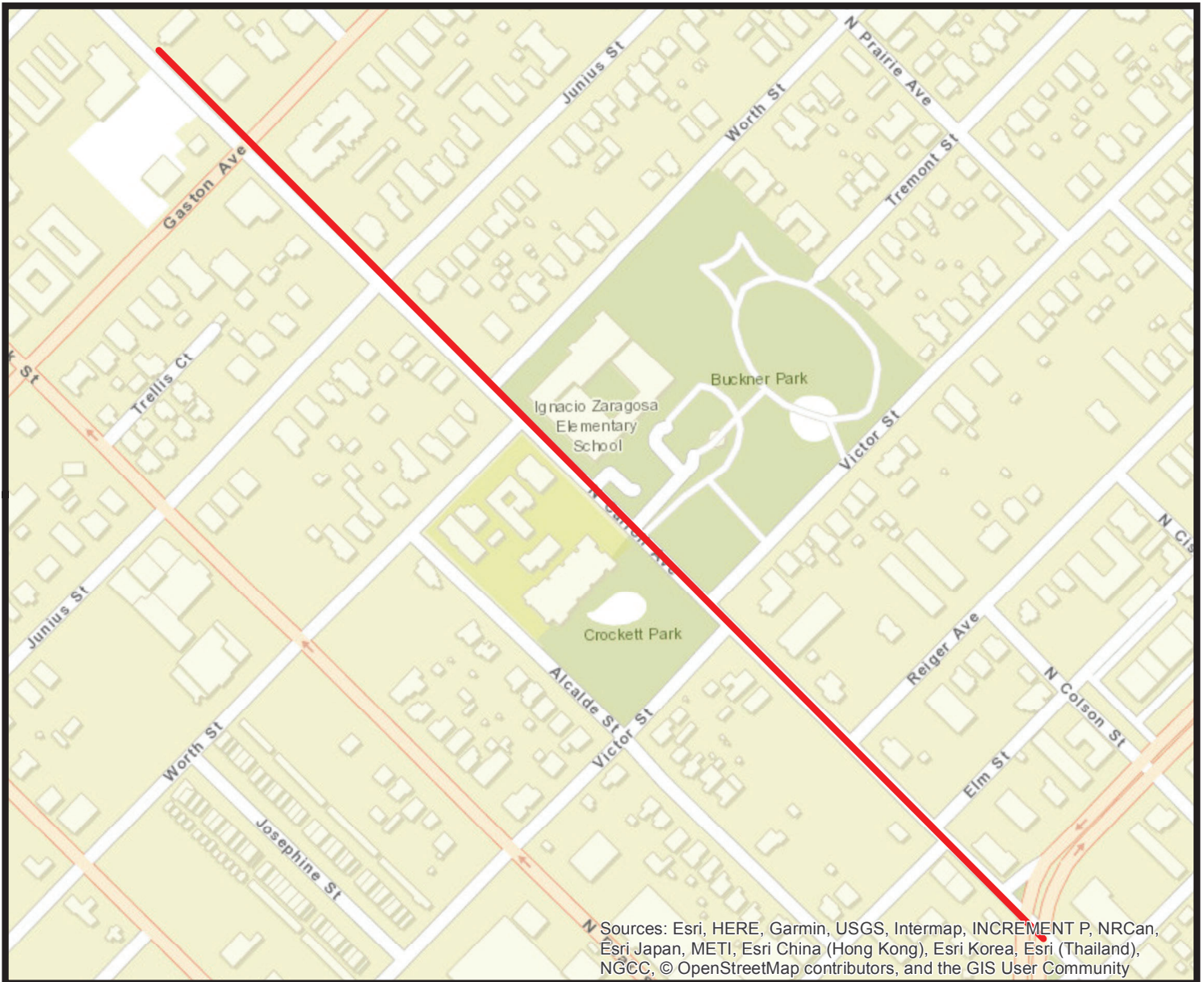
Zaragoza Safe Routes to School



Council District: 2

MAPSCO: 46E & 46F

**Carroll Avenue
Swiss Avenue to Main/Columbia**



Sources: Esri, HERE, Garmin, USGS, Intermap, INCREMENT P, NRCan, Esri Japan, METI, Esri China (Hong Kong), Esri Korea, Esri (Thailand), NGCC, © OpenStreetMap contributors, and the GIS User Community