

FILE NUMBER: D212-012(AS) **DATE FILED:** March 18, 2022
LOCATION: Northwest corner of Olympus Boulevard and Stampede Lane
COUNCIL DISTRICT: 6
SIZE OF REQUEST: ± 23.36 acres **CENSUS TRACT:** 141.27

OWNER: Trammell Crow No. 43, LTD
APPLICANT: BDDC, Inc.
REPRESENTATIVE: Tydre'on Wilkerson, KFM, LLC
REQUEST: An application for a development plan and a landscape plan for a multifamily development on property zoned Planned Development District No. 741, Subarea A.

STAFF RECOMMENDATION: Approval.

PLANNED DEVELOPMENT DISTRICT No. 741, Subarea A

<https://dallascityhall.com/departments/city-attorney/pages/articles-data.aspx?pd=741>

PD No. 741 Exhibits

- <https://dallascityhall.com/departments/city-attorney/articles/Exhibits/741A.pdf>
- <https://dallascityhall.com/departments/city-attorney/articles/Exhibits/741B.pdf>
- <https://dallascityhall.com/departments/city-attorney/articles/Exhibits/741C.pdf>
- <https://dallascityhall.com/departments/city-attorney/articles/Exhibits/741D.pdf>
- <https://dallascityhall.com/departments/city-attorney/articles/Exhibits/741E.pdf>
- <https://dallascityhall.com/departments/city-attorney/articles/Exhibits/741F.pdf>
- <https://dallascityhall.com/departments/city-attorney/articles/Exhibits/741G.pdf>
- <https://dallascityhall.com/departments/city-attorney/articles/Exhibits/741H.pdf>
- <https://dallascityhall.com/departments/city-attorney/articles/Exhibits/741I.pdf>
- <https://dallascityhall.com/departments/city-attorney/articles/Exhibits/741J.pdf>

BACKGROUND INFORMATION:

On January 25, 2006, the Dallas City Council established Planned Development District No. 741 by Ordinance No. 26233. PD No. 741 has four subareas: A, B, C, and D. The subject site is in a portion of Subarea A.

In Subarea A, a development plan must be approved by the city plan commission prior to the issuance of a building permit. However, a development plan is not required to reflect the entire district or an entire subarea and may include only a portion of the district or subarea. A landscape plan must be submitted with the development plan and approved by the city plan commission.

REQUEST DETAILS:

The request seeks approval of a development plan and a landscape plan on a presently undeveloped plot of land within PD No. 741, Subarea A. The development plan reflects a proposed multifamily development consisting of one-, two-, and three-story multifamily structures, a leasing office, a fitness center, a clubhouse, a two-story parking structure, and surface parking.

The landscape plan adheres to and is in accordance with SEC. 51P-741.111.

Upon reviewing the requested development plan and landscape plan, staff has determined that the request complies with the requirements set forth by Planned Development District No. 741 and does not impact any other provisions of the ordinance permitting this use.

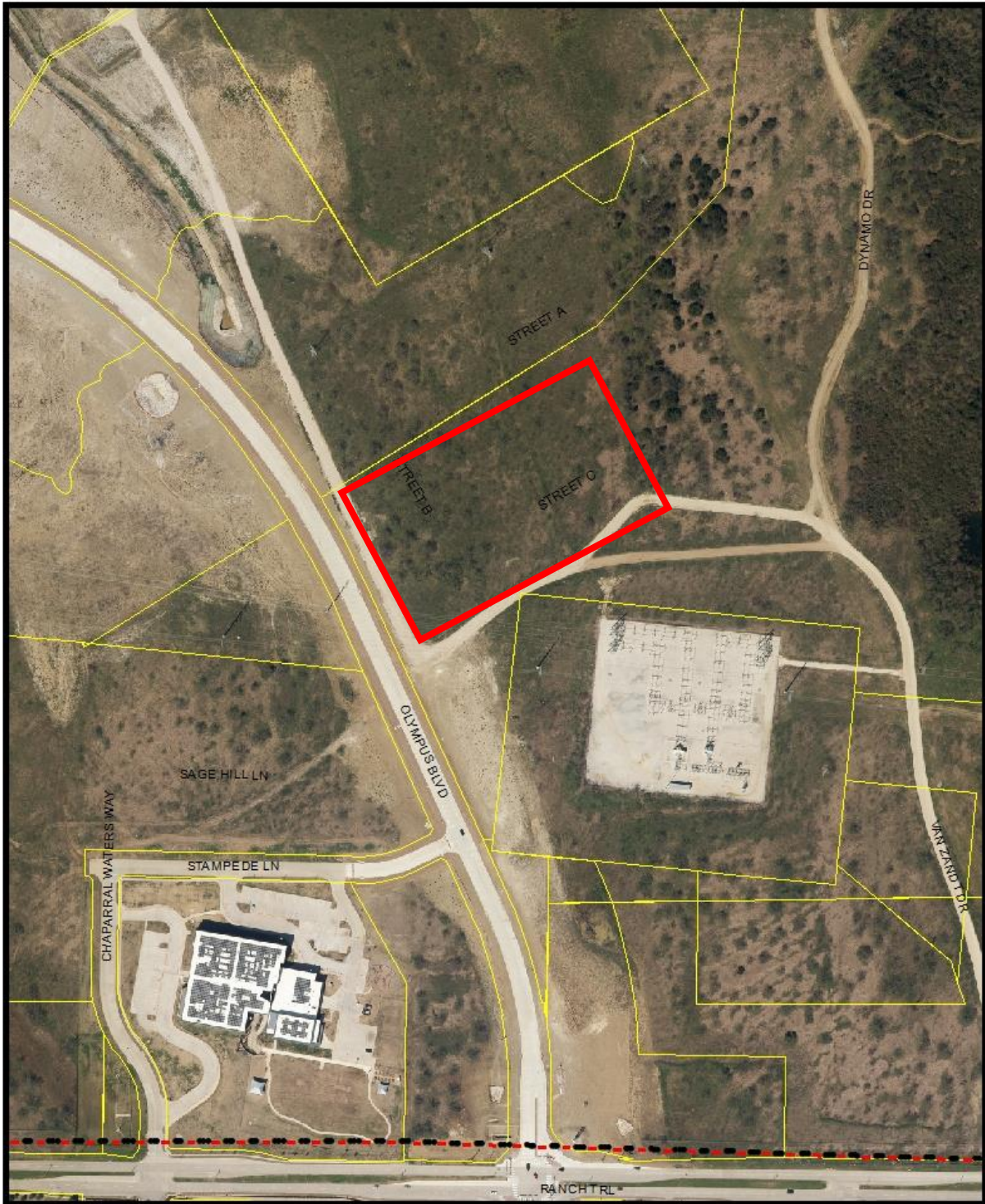
LIST OF OFFICERS

TRAMMEL CROW COMPANY NO. 43, LTD., a Texas limited partnership

- Henry GP, L.L.C., a Texas limited liability company- General Partner
 - Henry Billingsley - Member/Manager
 - Kenneth D. Mabry-Manager
 - Kimberly H. Meyer-

Manager Limited Partners:

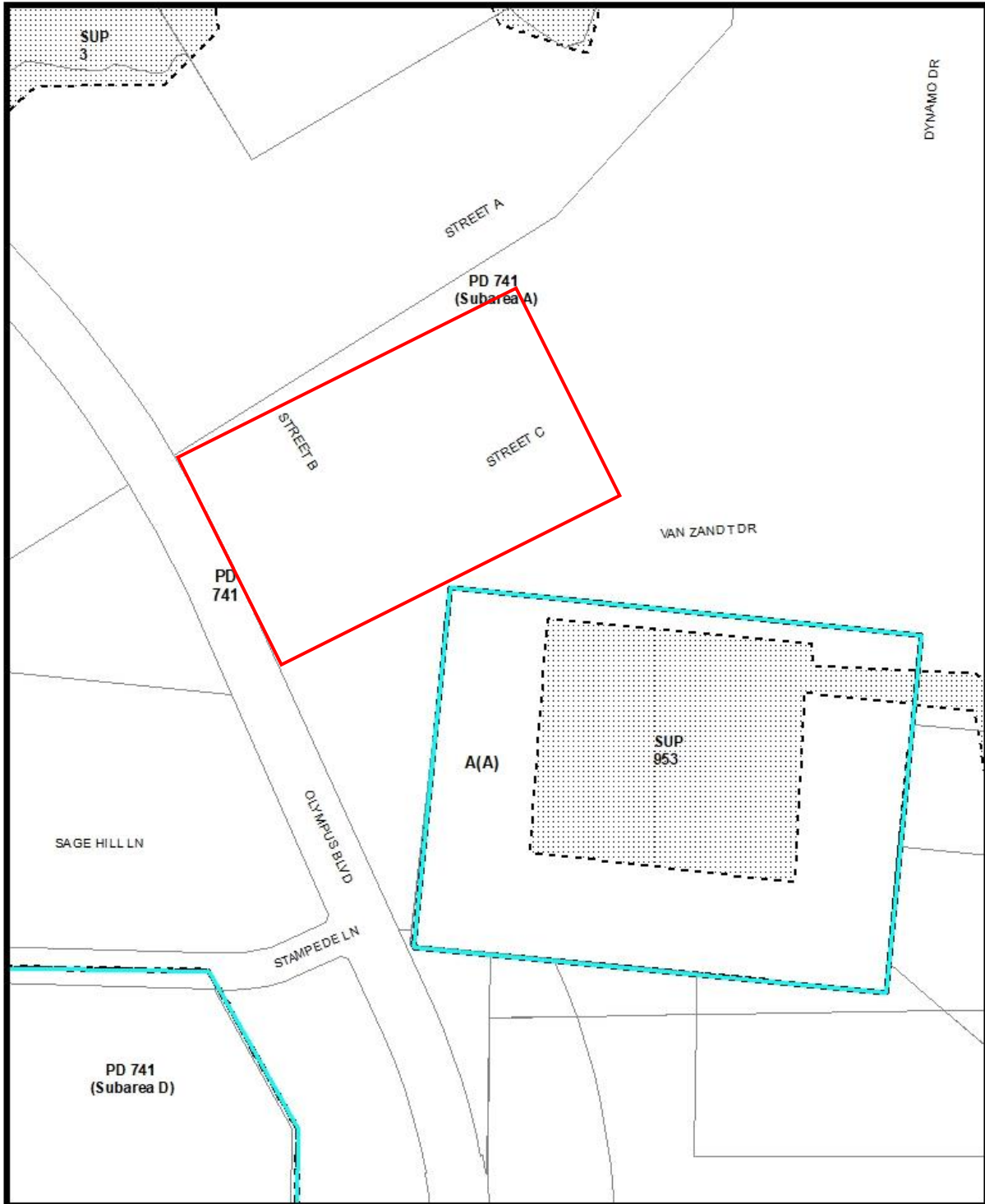
- Billingsley Holdings ASB II, LLC, a Texas limited liability company, limited partner
 - The HB ASB Trust-Member (Lucy Billingsley, Trustee)
 - Anne Sumner Billingsley Trust II-Member (Charles Jordan, Co-Trustee)
 - Henry Billingsley-Member
 - Lucy Billingsley-Manager
 - Anne Sumner Billingsley-Manager
 - Kenneth D. Mabry-Manager
 - Kimberly H. Meyer-Manager
- Lucy Billingsley-Limited Partner



 1:3,600

Aerial Map - D212-012

Printed Date: 9/27/2022



Zoning Map

Printed Date: 9/27/2022

APPROVED CONCEPTUAL PLAN (EXHIBIT 741A)

