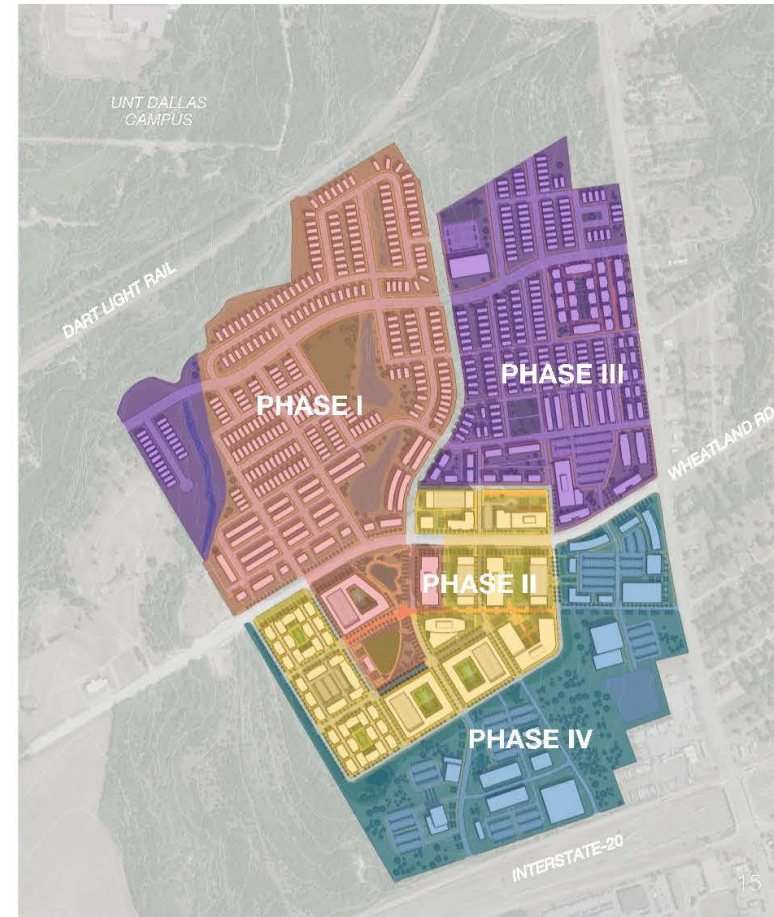


Exhibit C: Conceptual Master Plan



The conceptual master plan for the 250+ acreage bounded by Interstate Highway 20 (Lyndon B. Johnson Freeway), Lancaster Road, and the DART rail line in City Council District 8 in the University Hills Sub-district of the University TIF District



Exhibit C – Phase I Conceptual Site Plan



Exhibit C: Sample Images



Housing

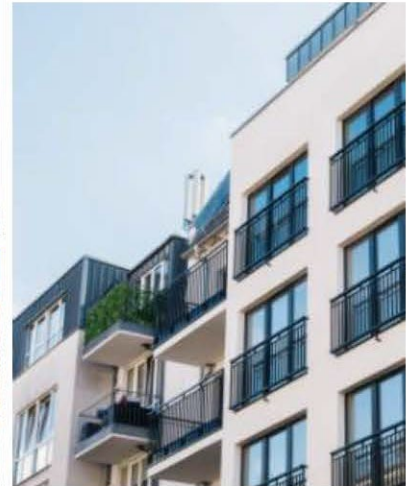


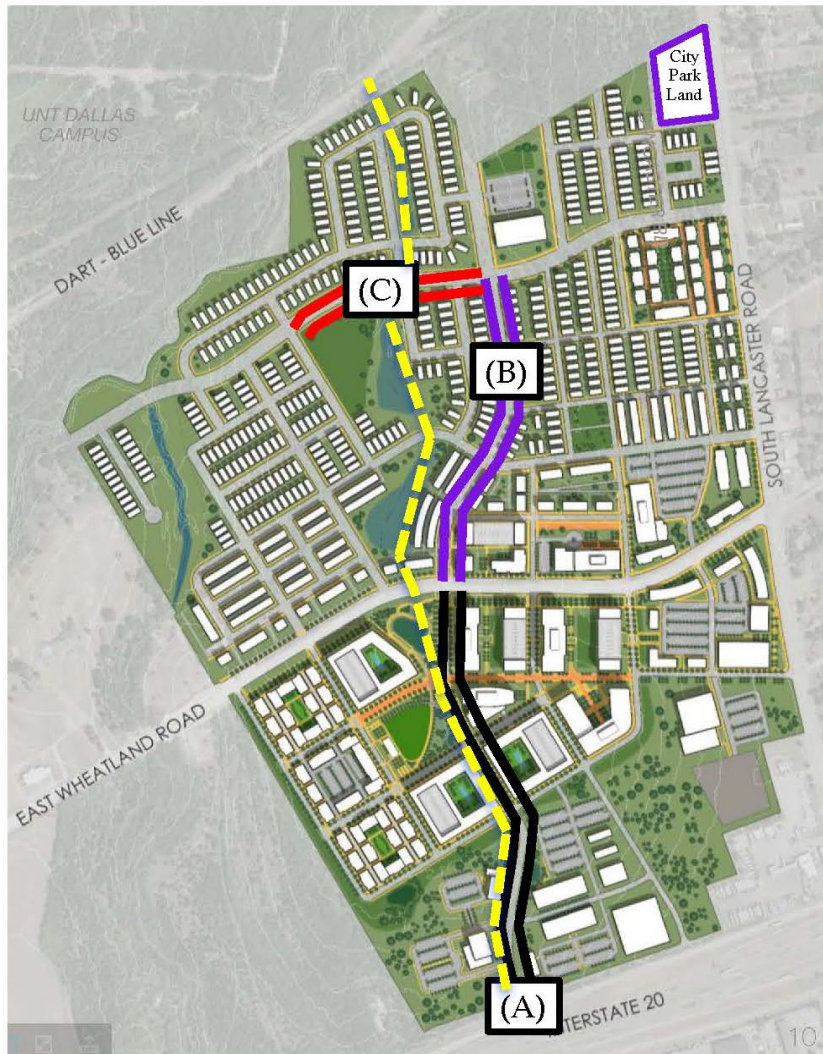
Exhibit C: Sample Images


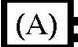
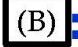
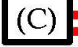


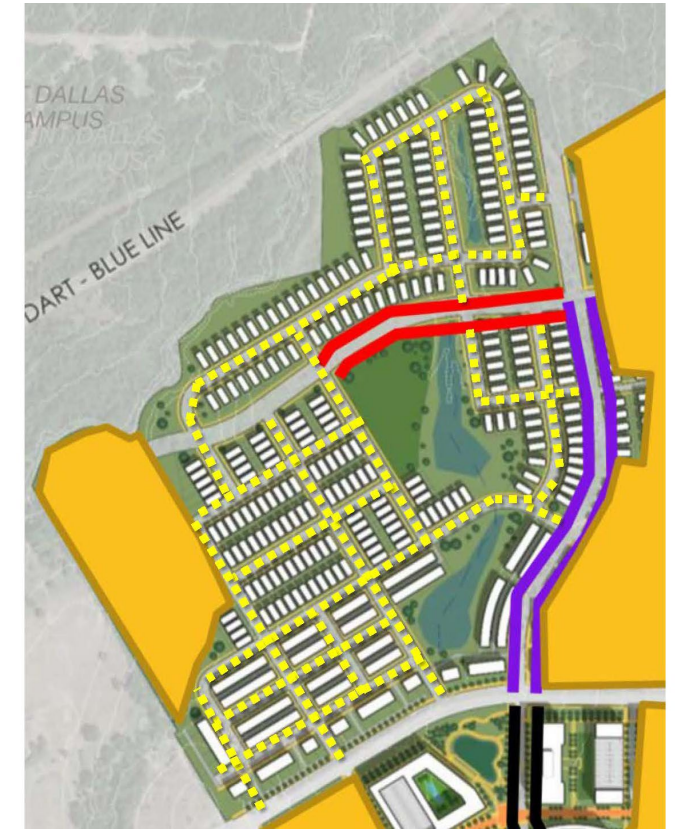
Open Space Town Center



Exhibit C: Proposed Public Infrastructure



- Major Onsite Improvements:**
 -  Sanitary Sewer from DART to I-20 (\$2.8m)
 - Mass Grading for Detention – Entire Site (\$1.866m)
 -  (A) N-S (A) Collector Road Wheatland to I-20 (\$4.153m)
 -  (B) N-S Collector Road Wheatland to Future Killough (\$4.277m)
 -  (C) E-W Collector (Killough) within Phase I (\$2.386m)



 Phase I
Direct Improvements

Major infrastructure improvements include sanitary sewer and street improvements on collector roads. Direct public improvements include water, wastewater, storm, and street improvements on residential roads.

