



**City of Dallas**

# **Domestic Violence Update**

**Public Safety Committee**

**October 29, 2024**

William H. Griffith, Deputy Chief of Police,  
Dallas Police Department  
City of Dallas

# Presentation Overview



- Purpose
- Definitions
- Dallas Family Violence Data
- Repeat Victims
- Fugitive Unit
- Multi-Family
- Training
- Partnerships
- Next Steps



# Purpose



- Provide data on the reduction of domestic violence crime.
- Discuss historical and year to date metrics.
- Discuss prevention efforts made by Domestic Violence Unit.
- Review services provided to victims.



# Definitions



- **Family Violence-** defined by the Texas Family Code as an act by one member against another of the same family/household that is intended to result in physical harm, bodily injury, assault, or sexual assault.
- **Intimate Partner Violence-** violence by a current or former partner in an intimate relationship against the other partner.
- **Lethality Assessment-** questionnaire/criteria for determining the level of risk, of lethal violence, a person faces by current/former intimate partner.
- **High Risk Domestic Violence Victim-** victims who suffer serious bodily injury (i.e. shooting, stabbing, broken bones, strangulation, hospitalization).



# Domestic Violence Metrics (Complete Year Comparison)



Family Violence Offenses	2021	2022	2023
Murder	29	22	28
Agg Assault	1,980	1,851	1,633
Simple Assault	11,041	11,011	9,866
Kidnapping	127	104	102
Sex Offenses	567	387	350
Total	15,585	14,721	13,475
Percent Change From Prior Year	-0.44%	-5.54%	-8.60%



# Domestic Violence Metrics (YTD 2024)



Family Violence Offenses	YTD LY	YTD
Murder	24	19
Agg Assault	1,310	1,285
Simple Assault	7,800	7,755
Kidnapping	82	92
Sex Offenses	313	221
Total	10,695	10,465
Percent Change YTD	-11.50%	-2.15%



# Intimate Partner Violence (YTD 2024)



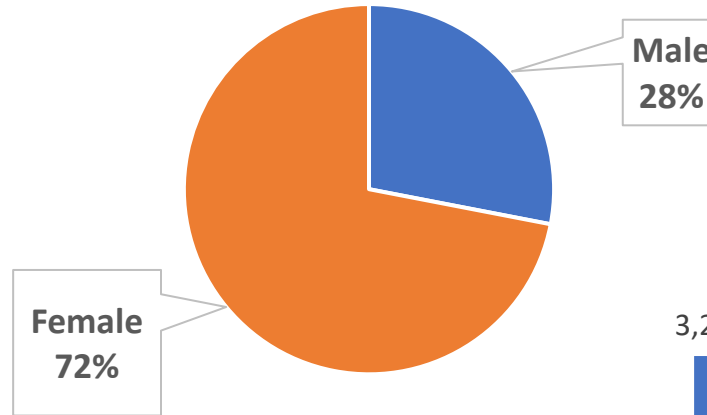
Family Violence Offenses	Intimate Partner %	Non-Intimate Partner %
Murder	42%	58%
Agg Assault	63%	37%
Kidnapping	89%	11%
Sex Offenses	42%	58%
Total	60%	40%



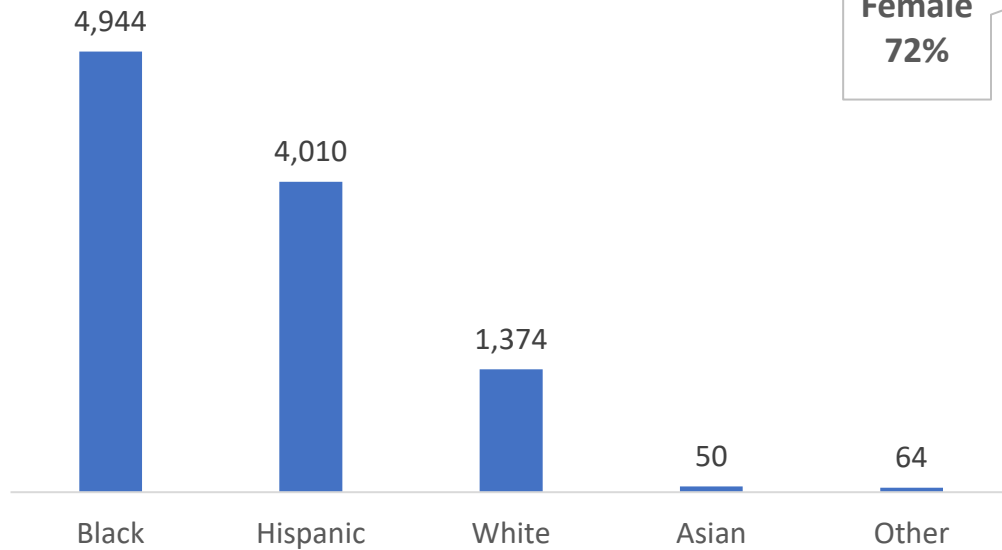
# Victimology Breakdown (YTD 2024)



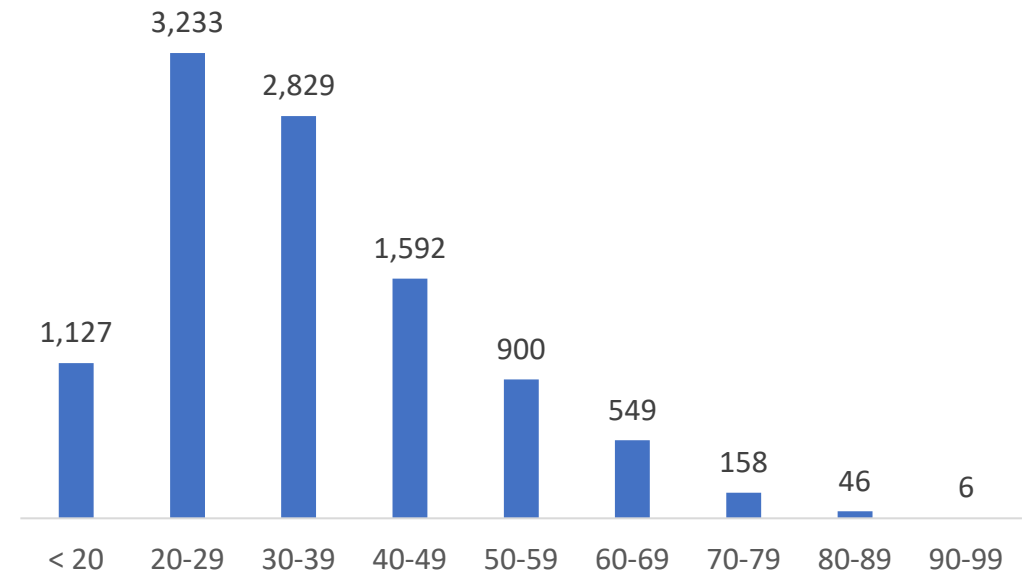
### Gender of Victims



### Race of Victims



### Age of Victims

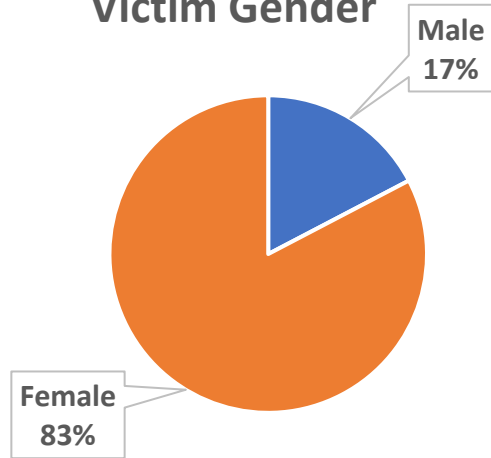




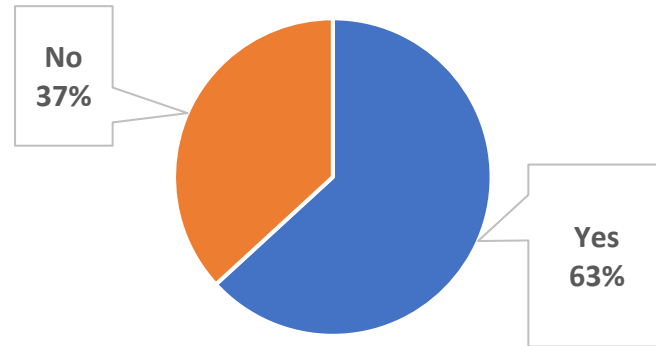
# Lethality Assessment (YTD 2024)



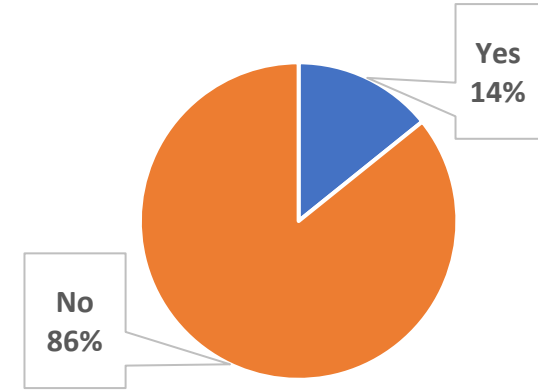
### Victim Gender



### Qualified for Screen- In



### Spoke with Counselor



Lethality Assessments are completed by a patrol officer in the field on all intimate partner offenses as part of the report taking process. Total YTD Lethality Assessments : 3,727



# Repeat Victims



- Identified 94 repeat victims (YTD) that had 3 or more offenses committed against them.
- DPD Advocate reached out to all victims and checked on their safety and provided other resources. These resources include:
  - Safety Planning
  - Protective Orders
  - Risk Assessment
  - Coordination with Shelters
  - Legal Assistance
- Working with District Attorney's Office to expedite the judicial process, identifying cases that are high risk, request for high bond, electronic monitoring and protective orders.
- Coordination with Fugitive Unit for prompt arrests.
- Notifying ATF liaison on cases that implicate firearm violations.



# Fugitive Unit



## LY 2023:

- The Fugitive Unit arrested 178 offenders for outstanding family violence warrants.
- Of those 178 offenders, 47 had been arrested previously for family violence offenses.

## YTD 2024:

- The Fugitive Unit arrested 214 offenders for outstanding family violence warrants.
- Of those 214 offenders, 75 had been arrested previously for family violence offenses.

This year, we added additional personnel to the unit as part of our effort to address the most violent offenders.



# Top Multi-FV Agg Assault Locations



- Top Multi-Family Agg Assault Locations were identified:
  - *11760 Ferguson Rd.*
  - *5440 N. Jim Miller Rd.*
  - *5969 Highland Village Dr.*
  - *9415 Bruton Rd.*
- Hosted “Trunk or Treat” events by Domestic Violence detectives and NPO unit at these locations regarding DV Prevention.
- In partnership with Genesis Women’s Shelter, The Family Place, Apartment Association of Greater Dallas, and Domestic Violence and Human Trafficking Advisory Council.



# Top Multi-FV Agg Assault Locations



5440 N. Jim Miller Rd.



11760 Ferguson Rd.



5969 Highland Village Dr.



# Departmental Training



- Police One was used to provide retraining to all sworn personnel on the below topics:
  - Domestic Violence Calls for Service
    - Standard Procedures
    - Lethality Assessment
    - Victim Centered Approach
  - Domestic Violence Supplement Update
    - Strangulation Forms
    - Protective Orders



# Next steps



- Domestic Violence is a systemic issue requiring constant advocacy and increased awareness from all members of our community.
- Continued assessment of metrics to identify top locations for Aggravated Assaults FV.
- Increasing number of community events attended.
- Implementation of LAP 2.0. Update our current Lethality Assessment Program form with new questions and create an electronic version.



# Partnerships



- Continuation of successful partnerships with The Family Place and Genesis Women's Shelter.
- We continue to seek new partnerships in the prevention of Domestic Violence. This year we established a collaboration with Apartment Association of Greater Dallas.
- Continuation of successful prosecution with the District Attorney's Office.







**City of Dallas**

# **Domestic Violence Update**

**Public Safety Committee  
October 29, 2024**

William H. Griffith, Deputy Chief of Police,  
Dallas Police Department  
City of Dallas