

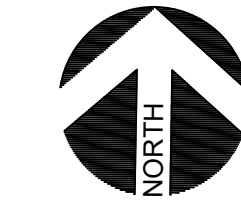
06/24/2024
PROJECT NUMBER

CASE NUMBER



VICINITY MAP

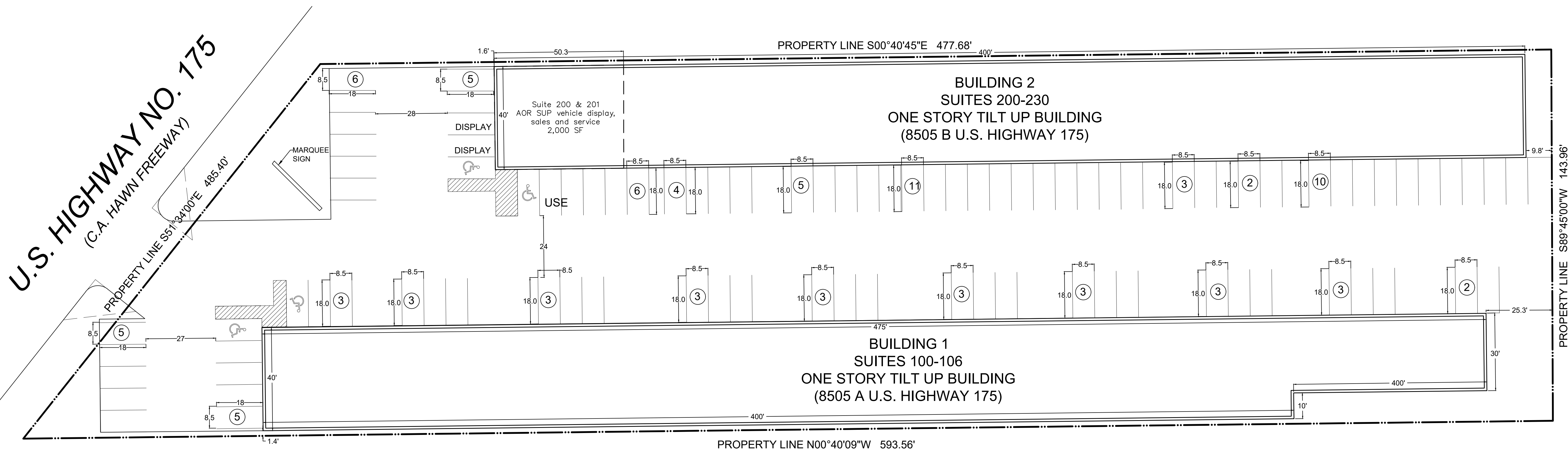
NTS



PROPOSED USE: SPECIFIC USE PERMIT - VEHICLE DISPLAY, SALES AND SERVICE

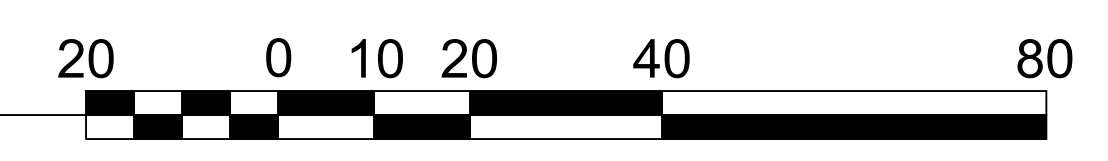
| SITE DATA SUMMARY | |
|---|--|
| LOCATION | 8505 C. F. HAWN FREEWAY |
| BLOCK | A/7873 |
| LOT | LOT 1 |
| SITE AREA, ACRES | 1.77 ACRES |
| SITE AREA, SF | 77,081 |
| ZONING | PD 534, SUBDISTRICT 2A - C F HAWN SPECIAL PURPOSE DISTRICT NO. 2 |
| BASE ZONING | CR, COMMUNITY RETAIL DISTRICT |
| SUP 1968 | SPECIFIC USE PERMIT FOR OFFICE, WAREHOUSE SHOWROOM USE |
| SUP VEHICLE DISPLAY, SALES AND SERVICE LIMITED TO | 2,000 SF |
| BUILDING SF | 34,250 |
| FAR | 0.44 |
| HEIGHT | 25 FT |
| STORIES | 1 |

| PARKING | | | |
|---|--------|--|------------------|
| USE | SF | PARKING RATIO | PARKING REQUIRED |
| OFFICE WAREHOUSE/SHOWROOM | 12,200 | 1:333 OFFICE/1:1000 SHOWROOM/WAREHOUSE | 16 |
| INDUSTRIAL LIGHT MANUFACTURING (INSIDE) | 2,000 | 1:600 | 3 |
| VEHICLE OR ENGINE REPAIR OR MAINTENANCE | 4,000 | 1:500, not less than 5 | 20 |
| OFFICE BLDG | 1,000 | 1:333 | 3 |
| VEHICLE DISPLAY, SALES AND SERVICE | 2,000 | 1:500 DISPLAY/SUITE | 4 |
| | | PARKING REQUIRED | 46 |
| | | PARKING PROVIDED | 91 |



U.S. HIGHWAY NO. 175
(C.A. HAWN FREEWAY)

SUP SITE PLAN
SCALE: 1" = 20'-0"



BALDWIN ASSOCIATES
3904 Elm Street, Suite B
Dallas, Texas 75226
MOBILE: 214.729.7949
OFFICE: 214.824.7949
rob@baldwinplanning.com

Baldwin Associates

8505 CF HAWN FREEWAY
CITY OF DALLAS, TEXAS