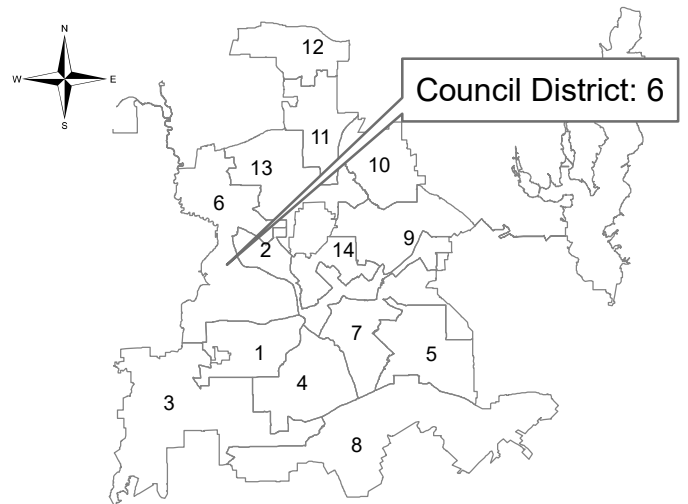
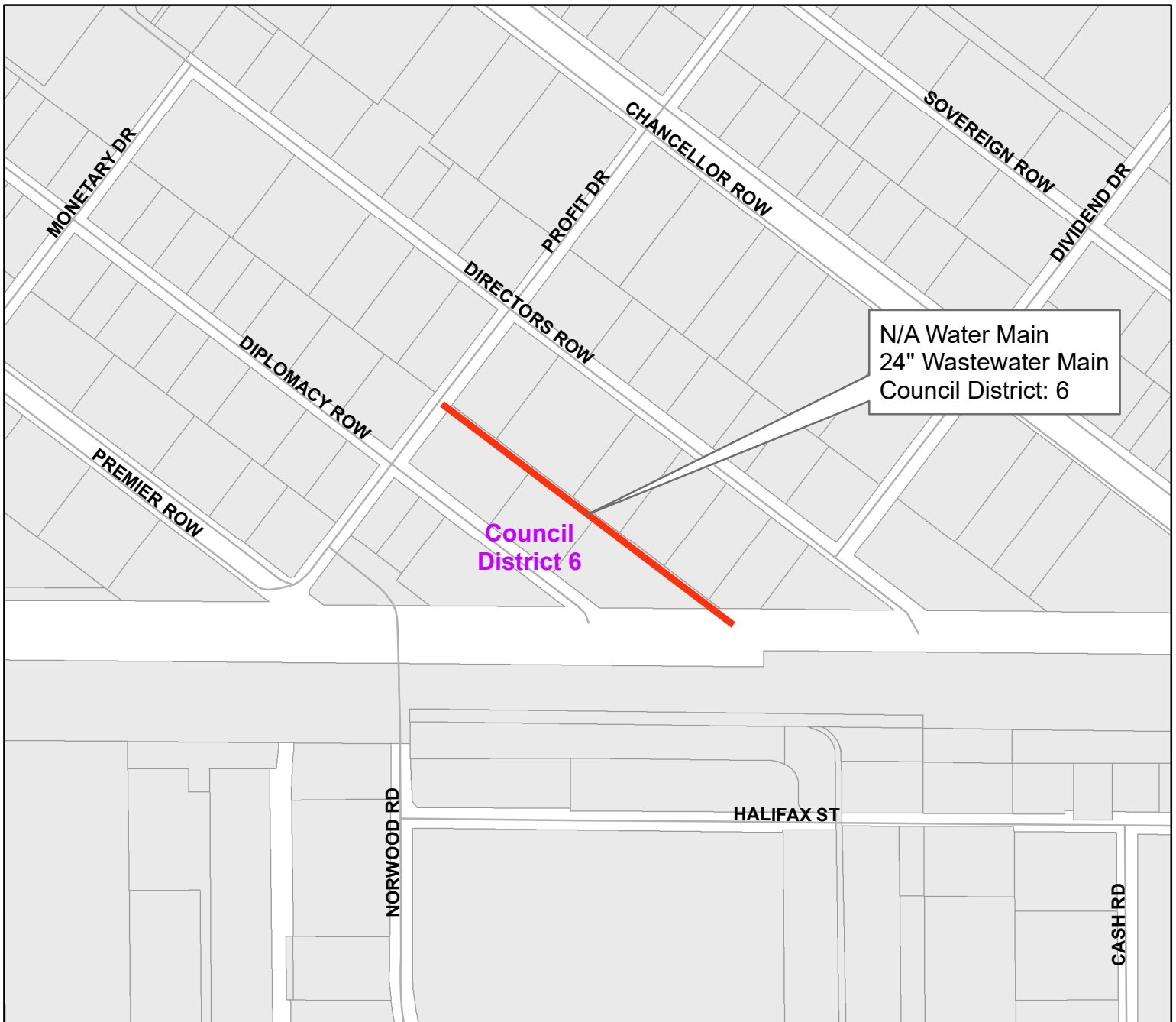


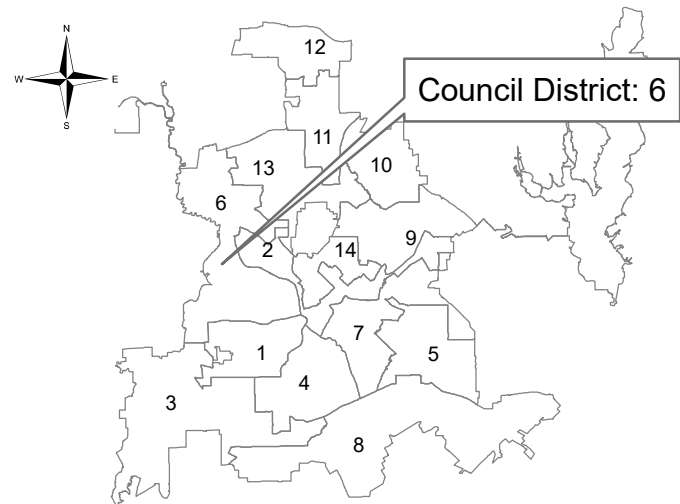
Chancellor Row/Metromedia Place
from Easement north of Halifax Street northwest



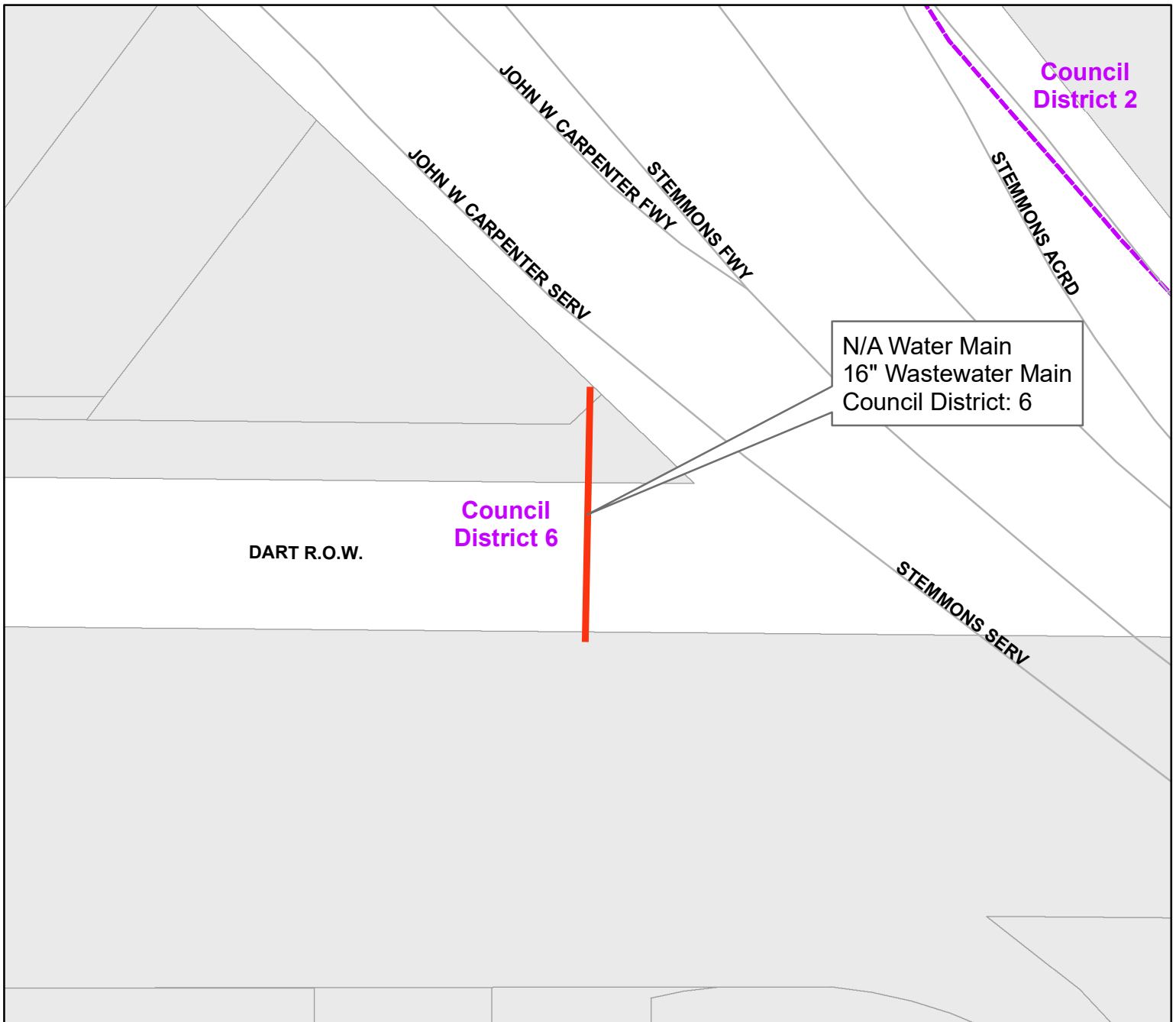
Dallas Water Utilities
Contract No. 25-179/180
Water and Wastewater Main Installations
at 8 Locations



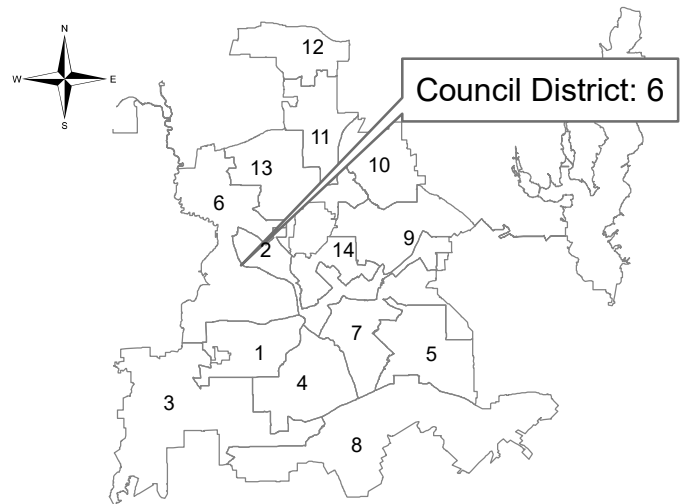
Easement between Diplomacy Row and
Directors Row
from Profit Drive southeast



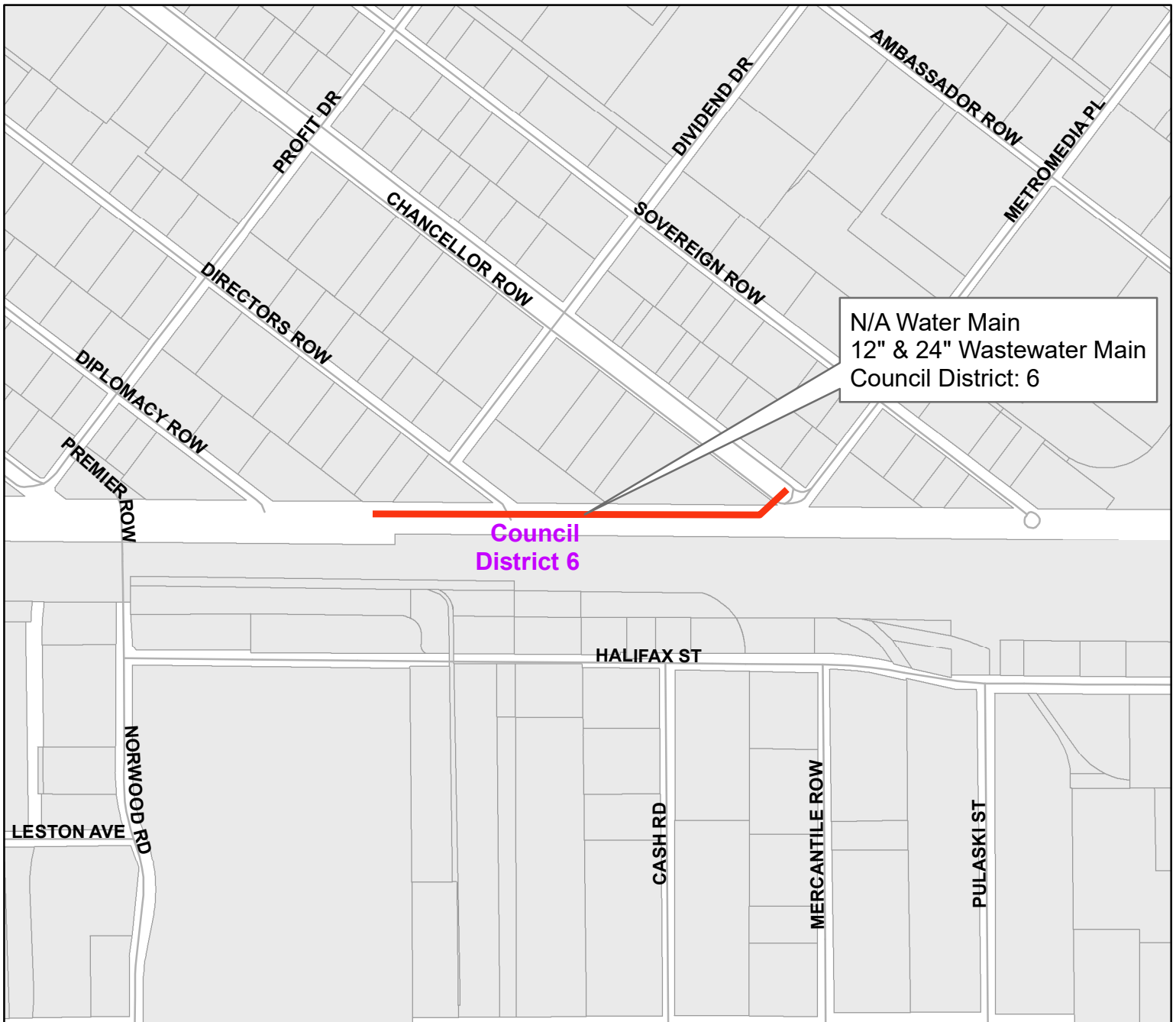
Dallas Water Utilities
Contract No. 25-179/180
Water and Wastewater Main Installations
at 8 Locations



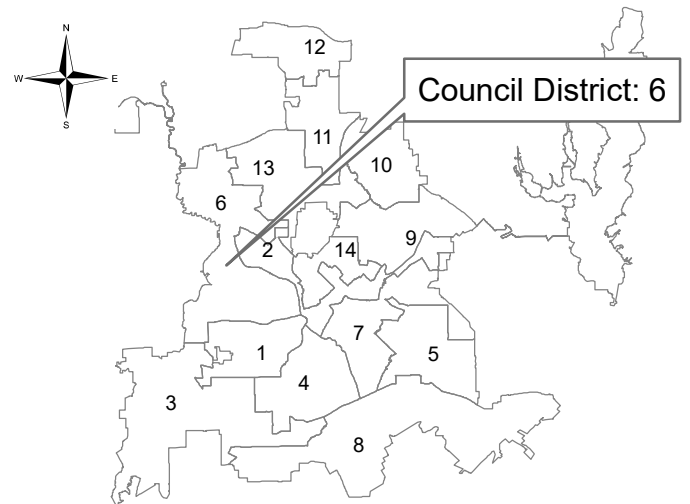
Easement north of DART ROW
from John W Carpenter (US- 183) Freeway south



Dallas Water Utilities
Contract No. 25-179/180
Water and Wastewater Main Installations
at 8 Locations

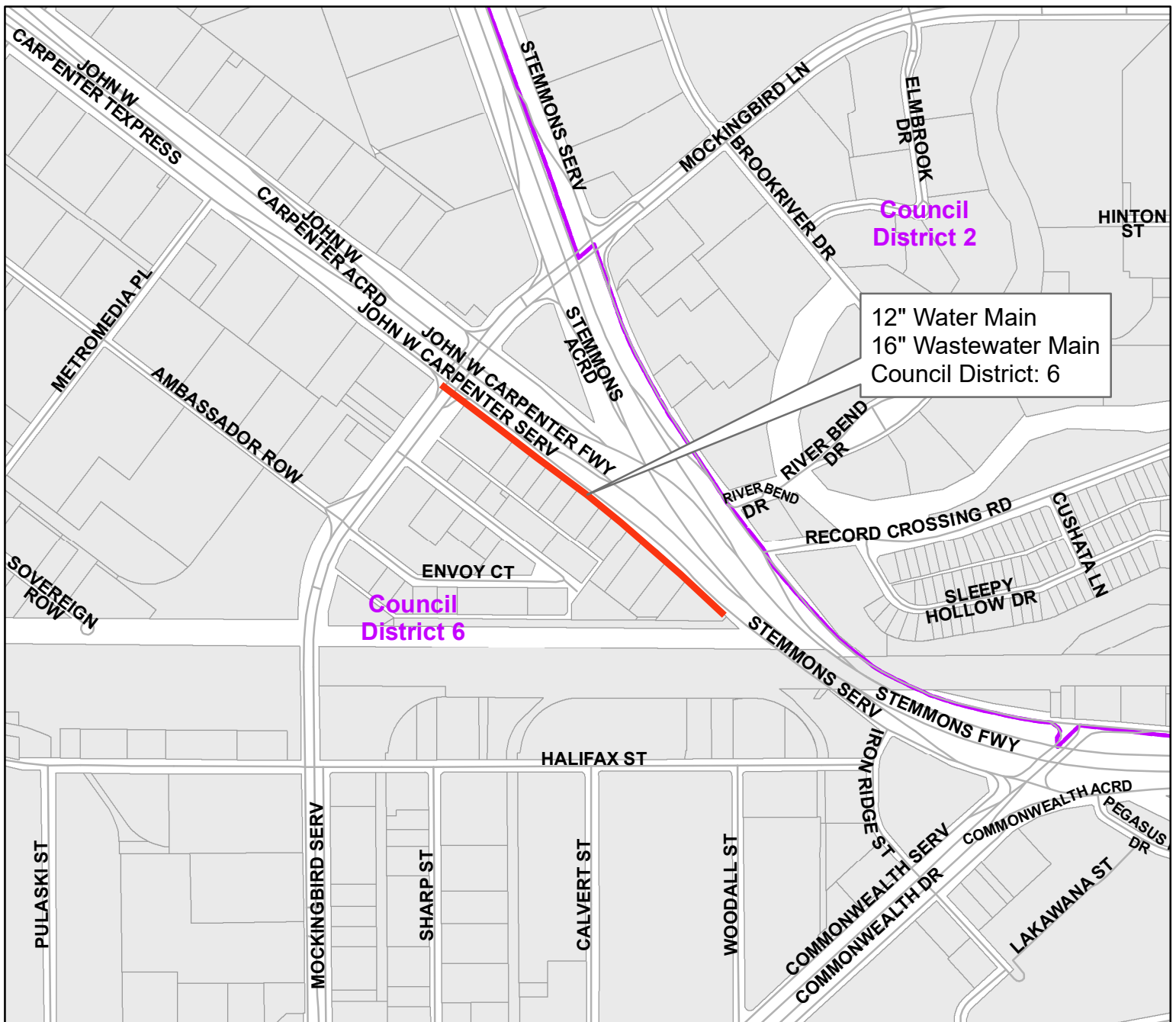


Easement north of Halifax Street
from Chancellor Row west

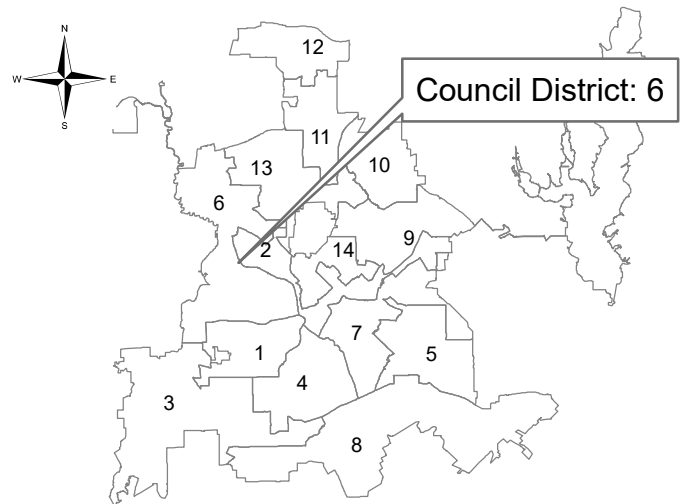


Dallas Water Utilities
Contract No. 25-179/180

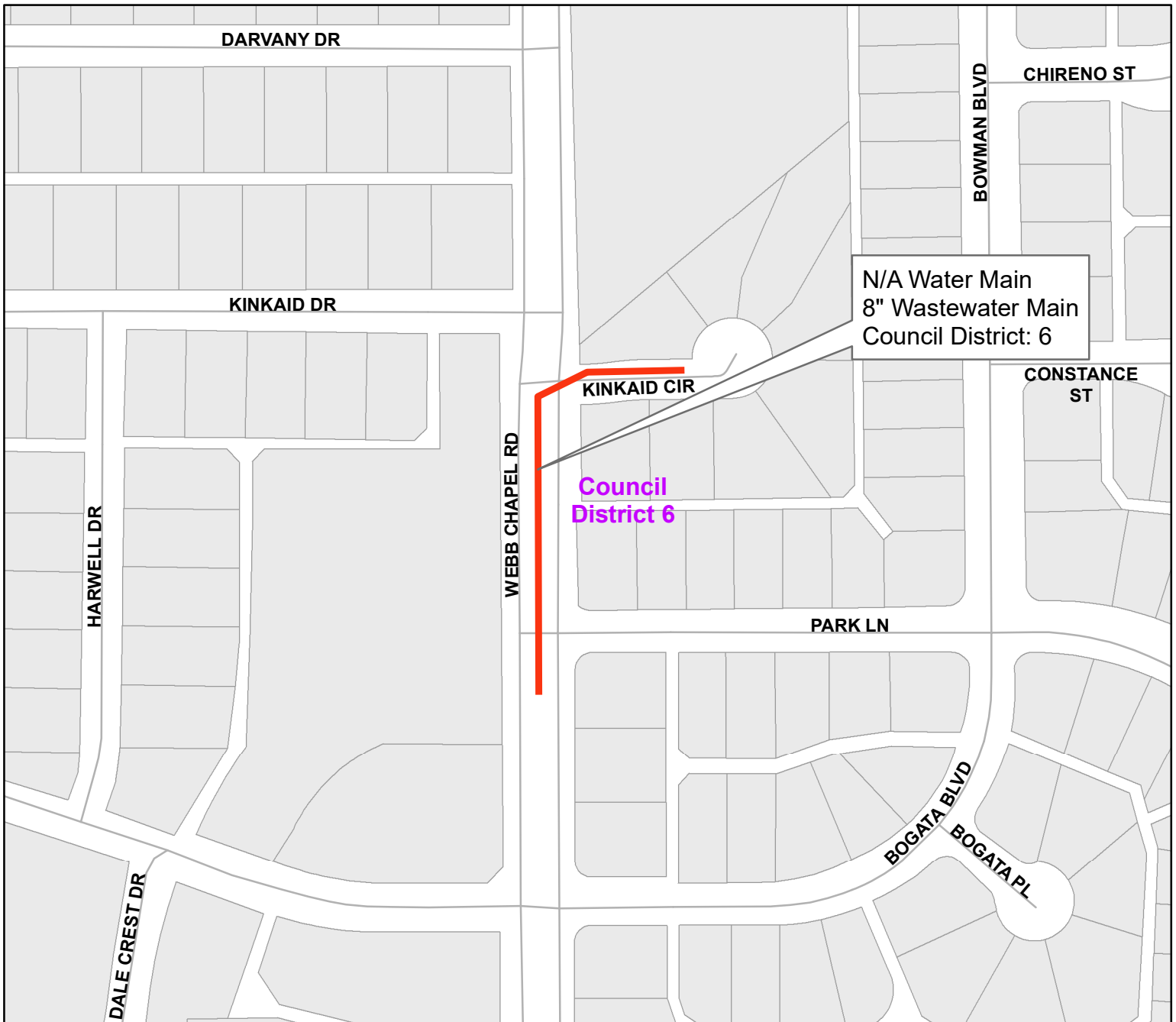
Water and Wastewater Main Installations
at 8 Locations



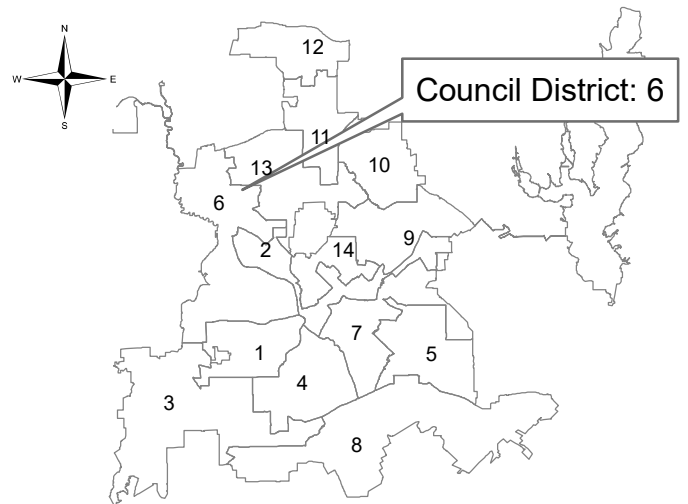
John W Carpenter (US-183) Freeway SERV
from Mockingbird Lane southeast



Dallas Water Utilities
Contract No. 25-179/180
Water and Wastewater Main Installations
at 8 Locations

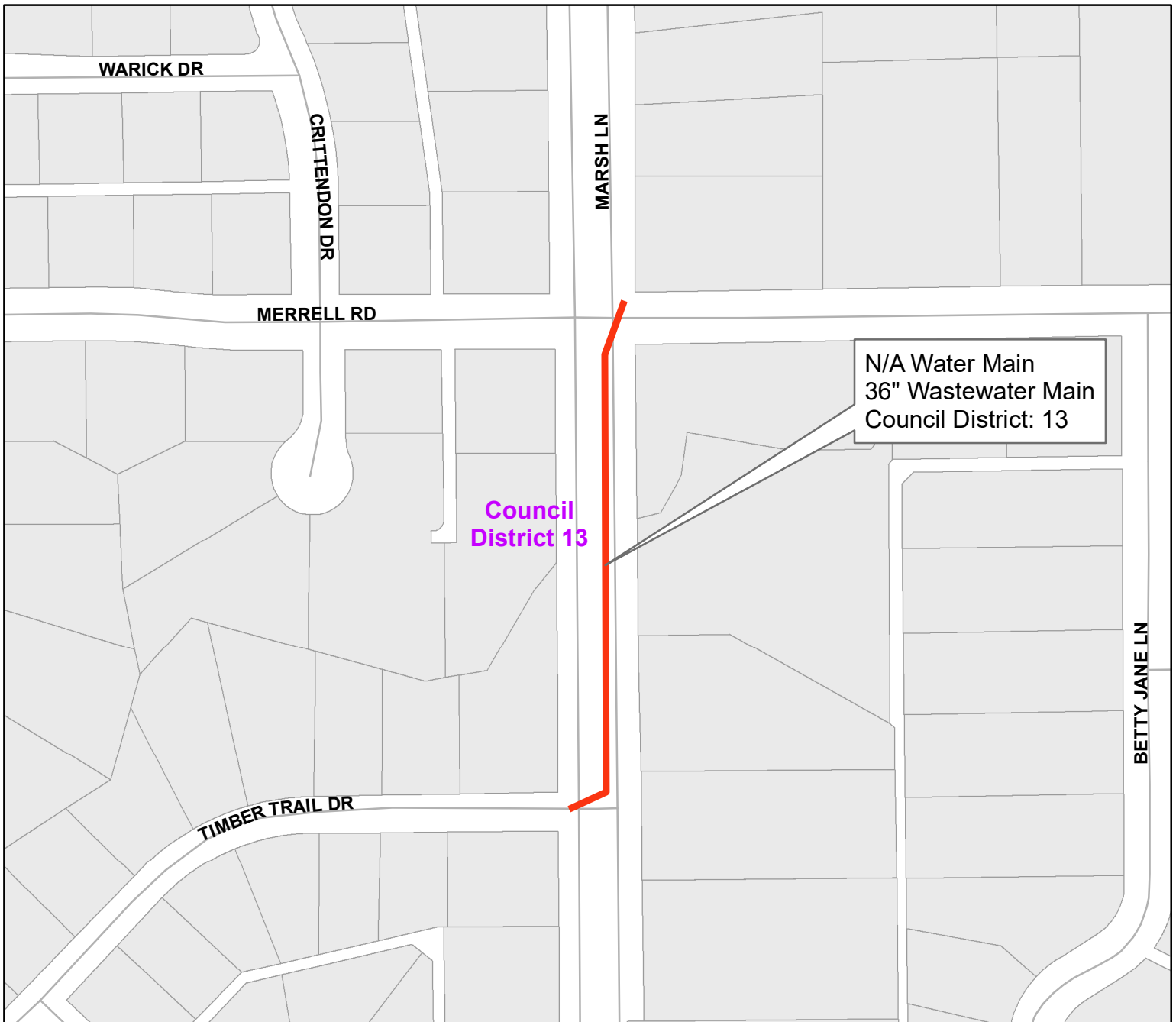


Kinkaid Circle/Webb Chapel Road
from Webb Chapel Road east/from south
of Park Lane north

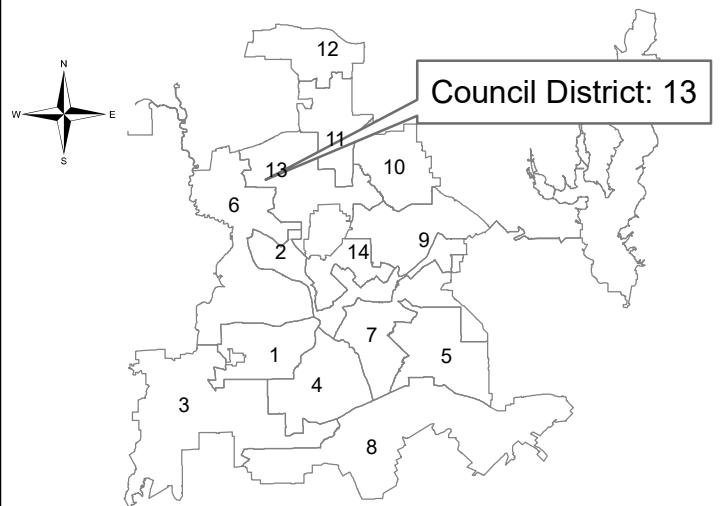


**Dallas Water Utilities
Contract No. 25-179/180**

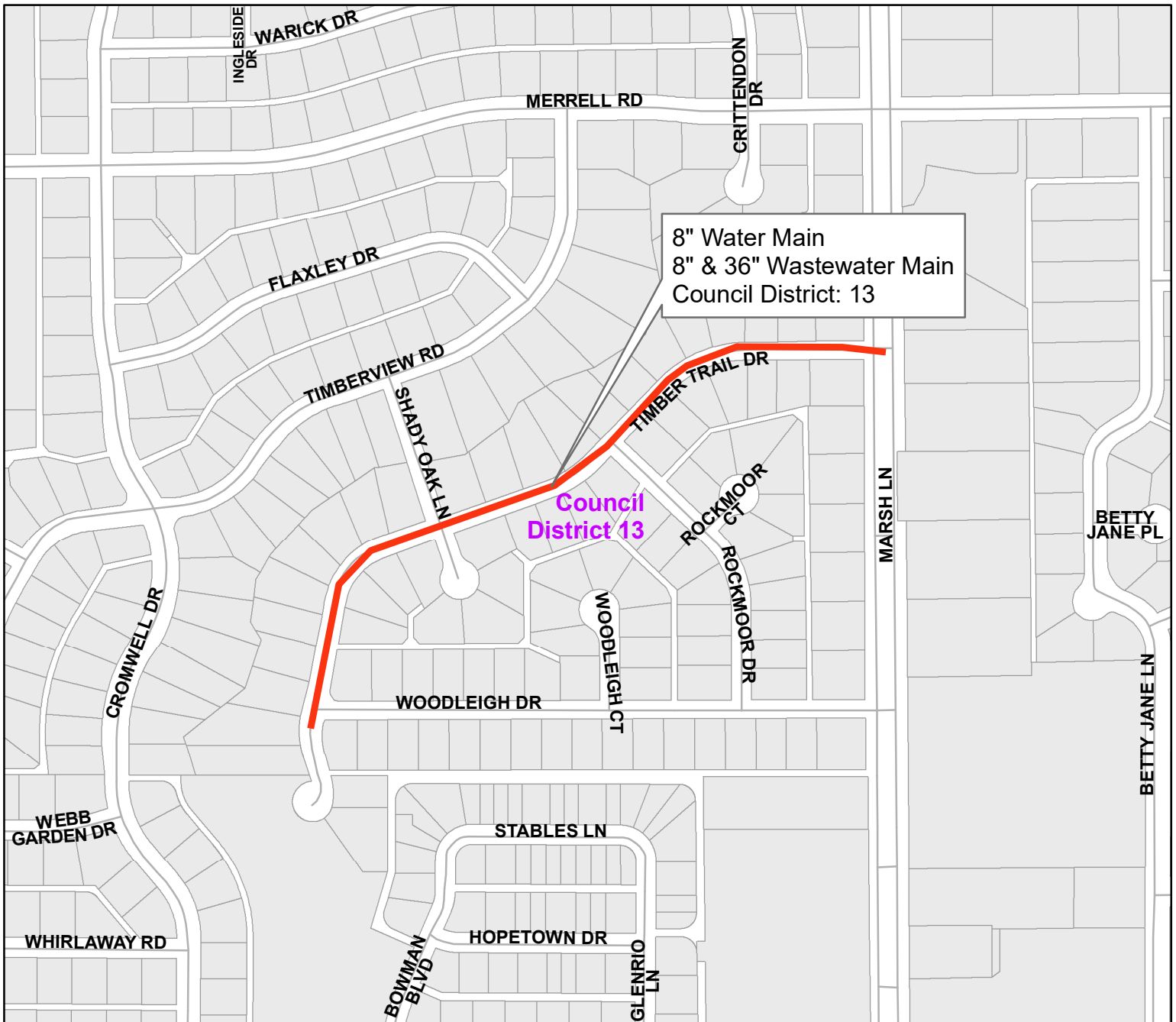
**Water and Wastewater Main Installations
at 8 Locations**



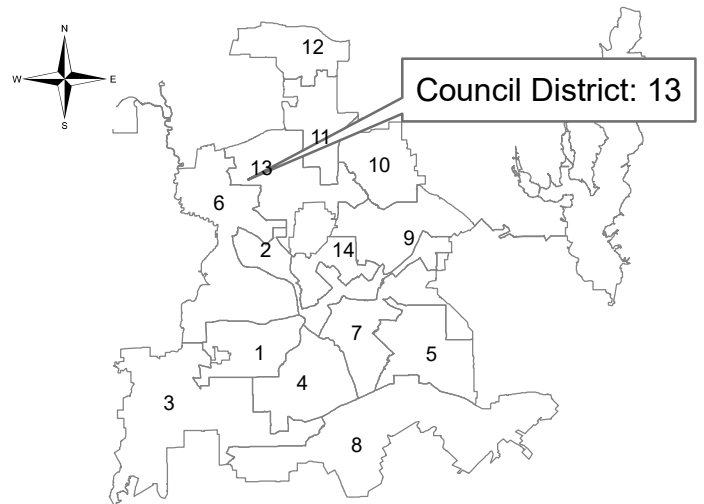
Marsh Lane
from Merrell Road to Timber Trail Drive



Dallas Water Utilities
Contract No. 25-179/180
Water and Wastewater Main Installations
at 8 Locations



Timber Trail Drive
from Marsh Lane to Woodleigh Drive



Dallas Water Utilities
Contract No. 25-179/180

Water and Wastewater Main Installations
at 8 Locations