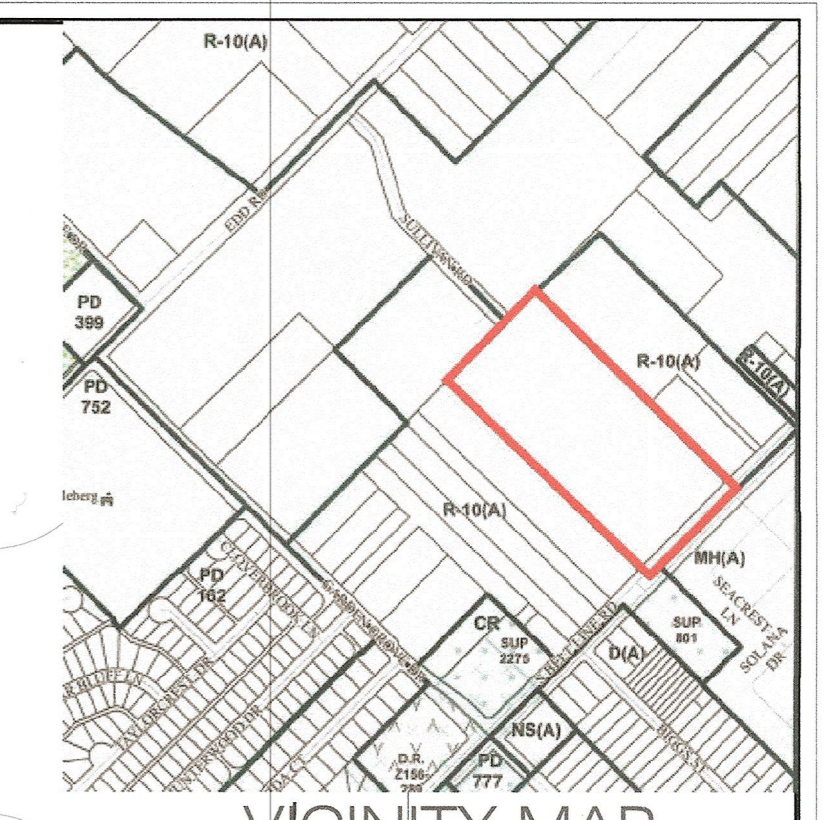
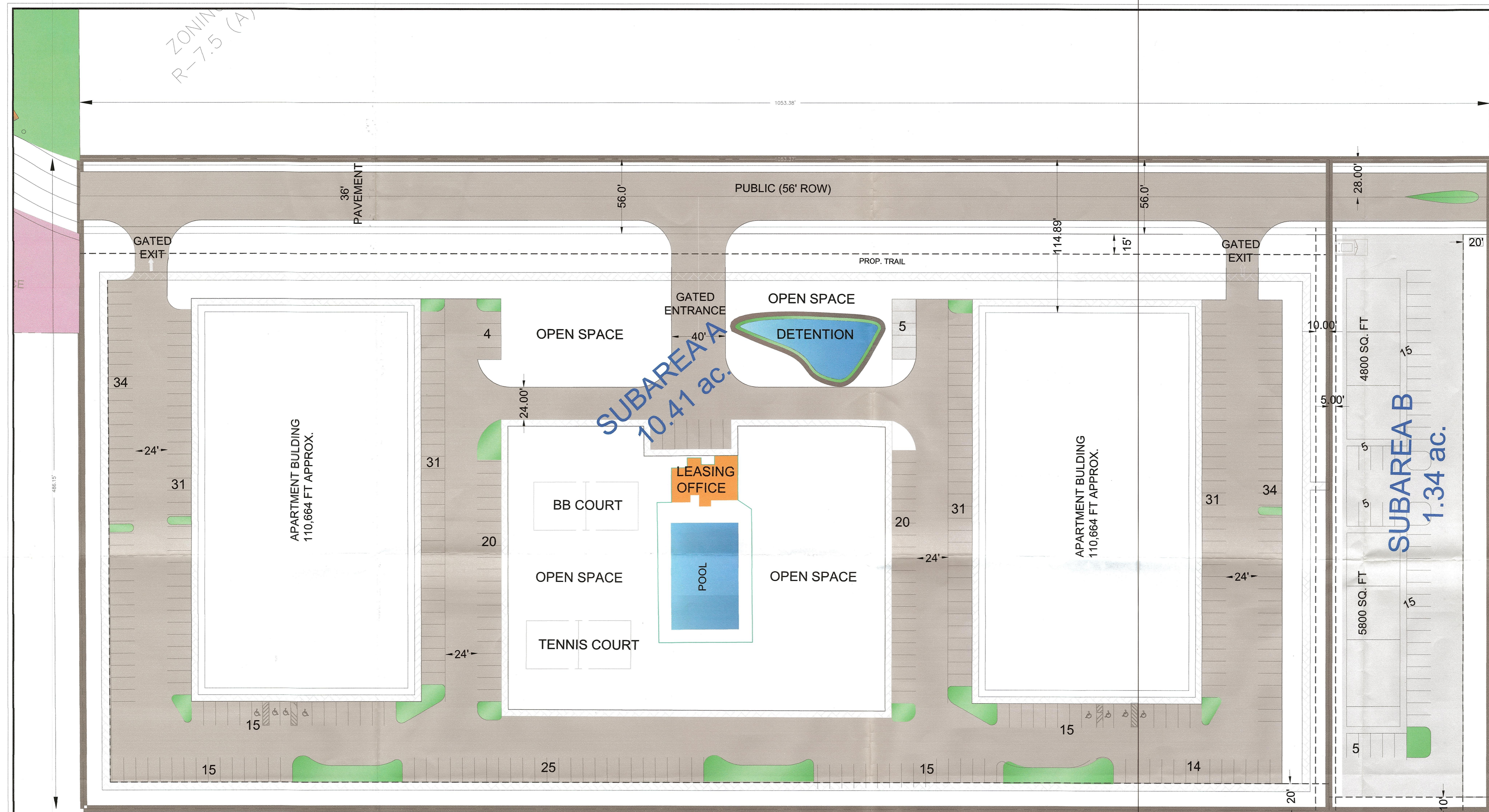


ZONING  
R-7.5 (A)



VICINITY MAP



**SUBAREA A**  
10.41 ac.

**SUBAREA B**  
1.34 ac.

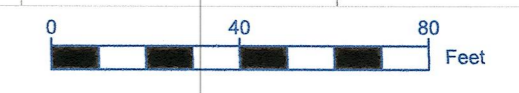
- 6' WALKING TRAIL
- OPEN /RECREATIONAL AREA
- DETENTION AREA
- SETBACKS
- PROPERTY LINE BOUNDARY
- SUBAREAS

TYP. 9'X18'  
PARKING  
STALL

PARKING REQUIRED (1 space/bedroom)					
	units/floor	# Bedrooms/ floor	# BEDROOMS		TOTAL
			Building 1	Building 2	
# of 1 bedrooms units	16	16	48	48	
# of 2 bedrooms units	16	32	96	96	
# of 3 bedrooms units	2	6	18	18	
<b>Totals</b>			<b>162</b>	<b>162</b>	<b>324</b>
<b>PARKING PROVIDED = 340</b>					

TOTAL SITE AREA 11.76 AC	SUBAREA A	SUBAREA B
TITLE AREA	MULTI FAMILY 10.41 AC.	COMM/RETAIL 1.34 AC.
MAX LOT COVERAGE	60%	60%
DENSITY	N/A	N/A
UNIT AREA	1 BEDROOM 825 SF MAX	
	2 BEDROOM 1,525 SF MAX	
	3 BEDROOM 1,725 SF MAX	
BUILDING SETBACKS		
FRONT	15- FEET	20- FEET
SIDE	N/A	N/A
REAR	20- FEET	N/A

**DEVELOPMENT PLAN**  
Z190-223



Z190-223

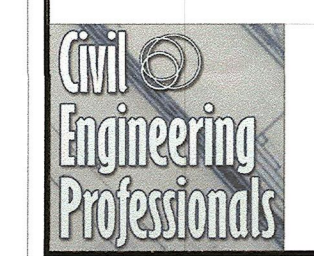


Exhibit 1055A: Development Plan  
Approved  
City Plan Commission  
April 8, 2021

31878  
APPROVED BY  
CITY COUNCIL  
MAY 26 2021  
CITY SECRETARY

210939