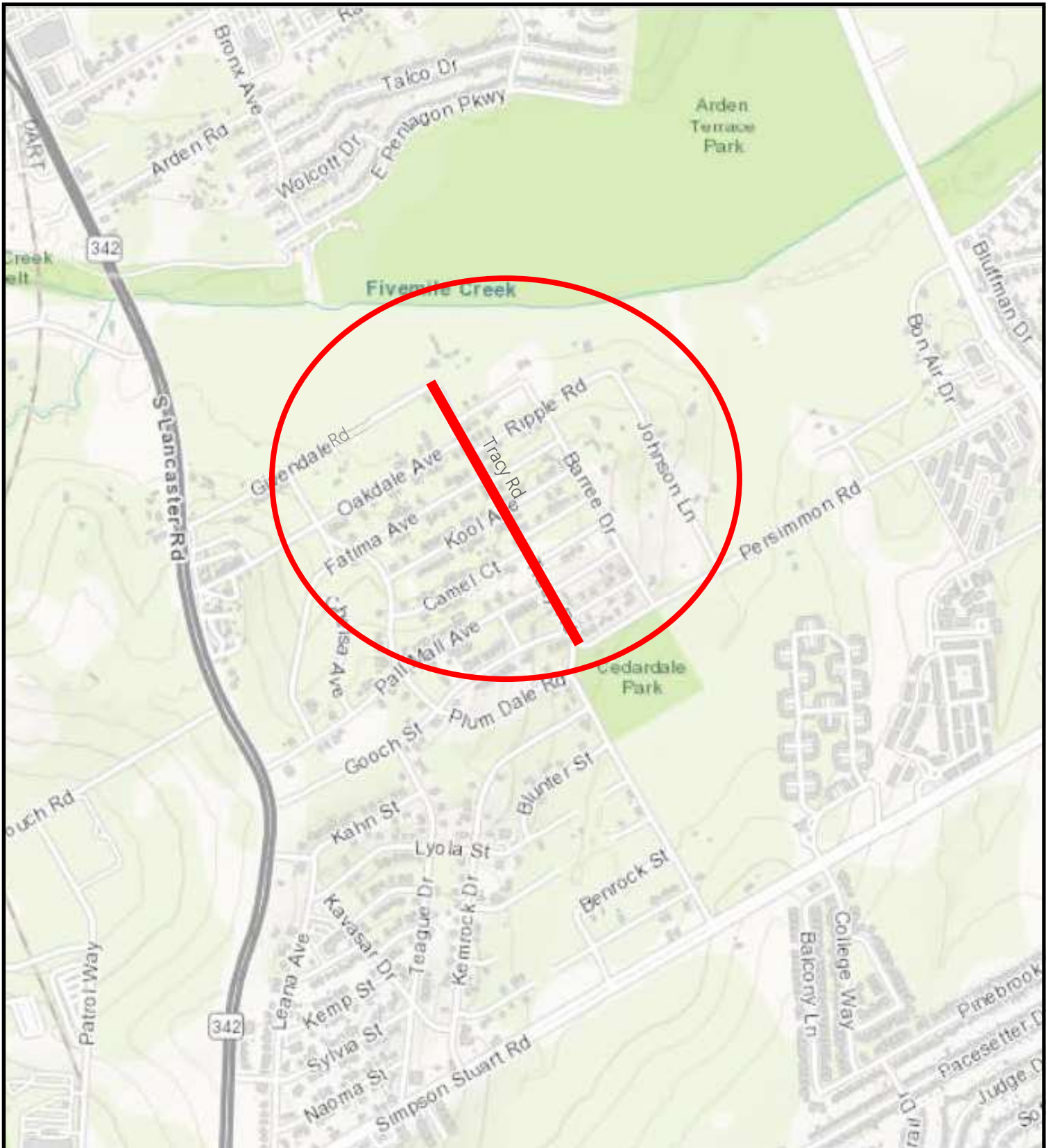


STREET IMPROVEMENT

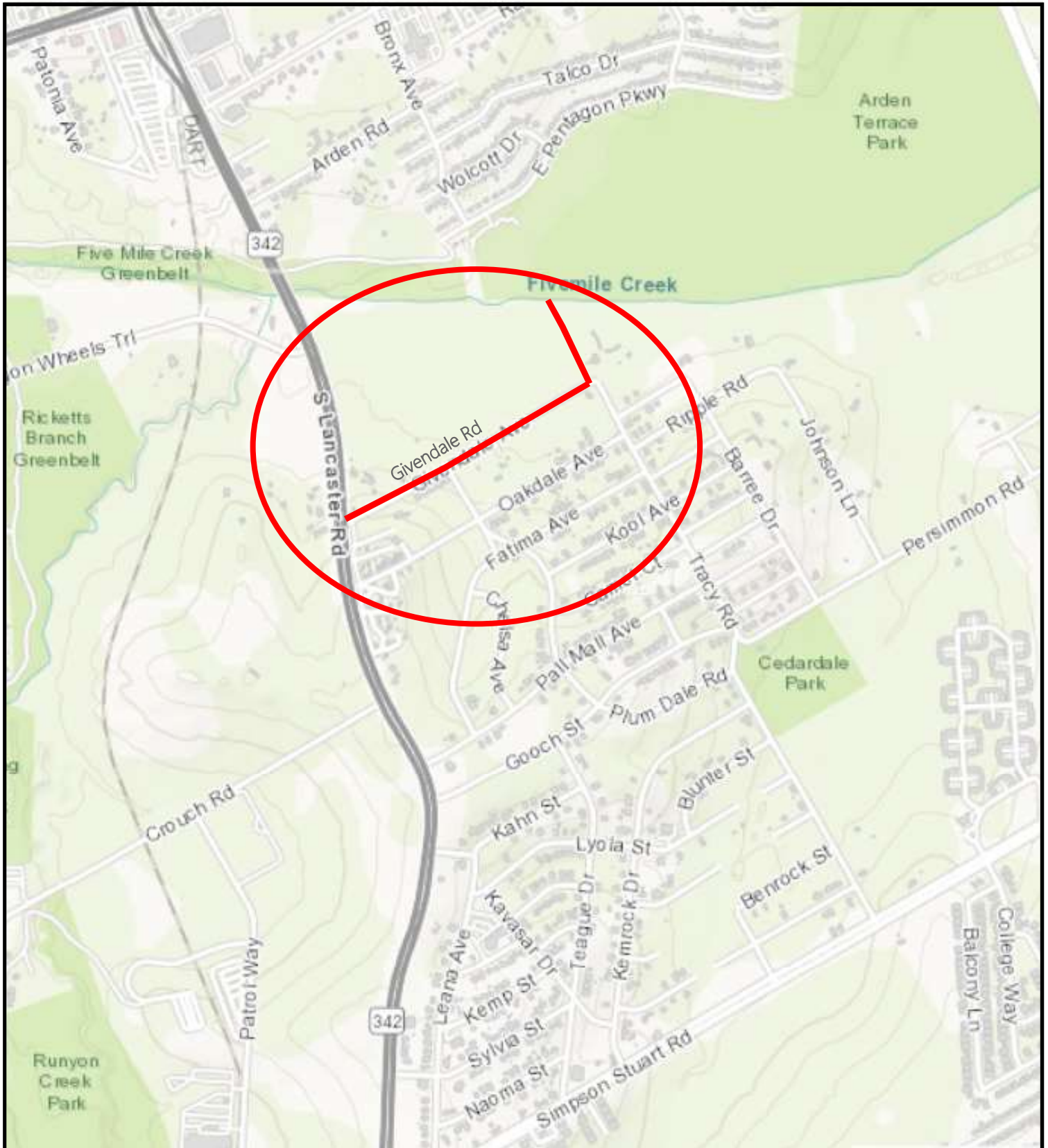
FIVE MILE INFRASTRUCTURE IMPROVEMENTS - PACKAGE A TRACY ROAD FROM GIVENDALE ROAD TO PERSIMMON ROAD



COUNCIL DISTRICT 8

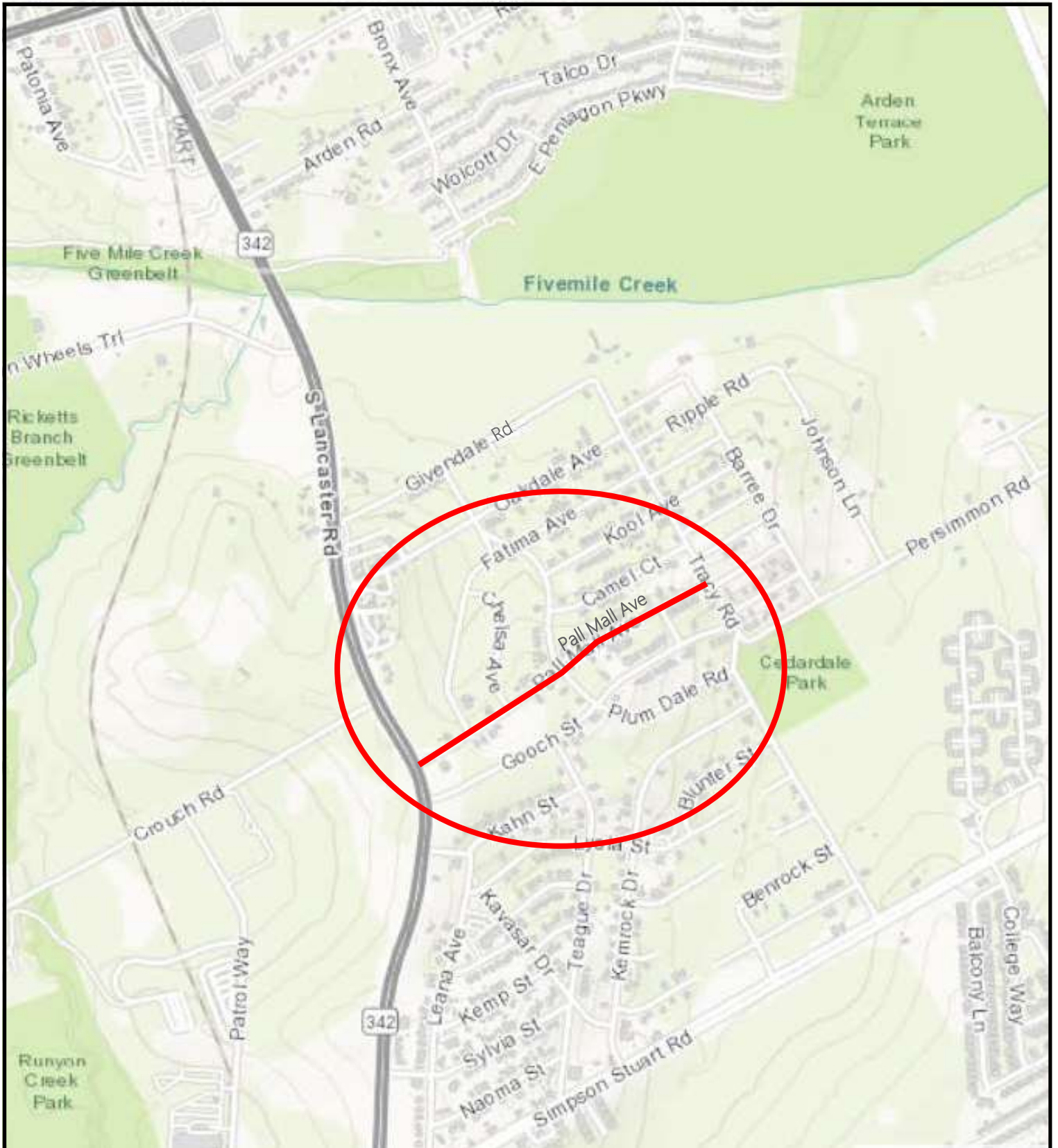
STREET IMPROVEMENT

FIVE MILE INFRASTRUCTURE IMPROVEMENTS - PACKAGE A GIVENDALE ROAD FROM LANCASTER ROAD TO TRACY ROAD



COUNCIL DISTRICT 8

**STREET IMPROVEMENT
FIVE MILE INFRASTRUCTURE IMPROVEMENTS - PACKAGE A
PALL MALL AVENUE FROM LANCASTER ROAD TO TRACY ROAD**



COUNCIL DISTRICT 8