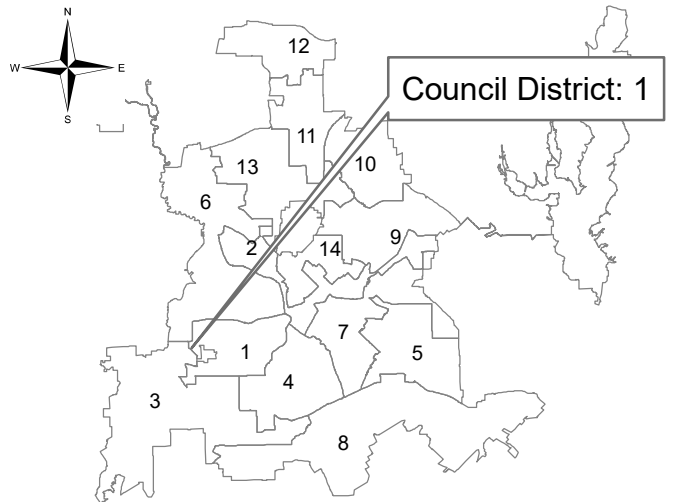
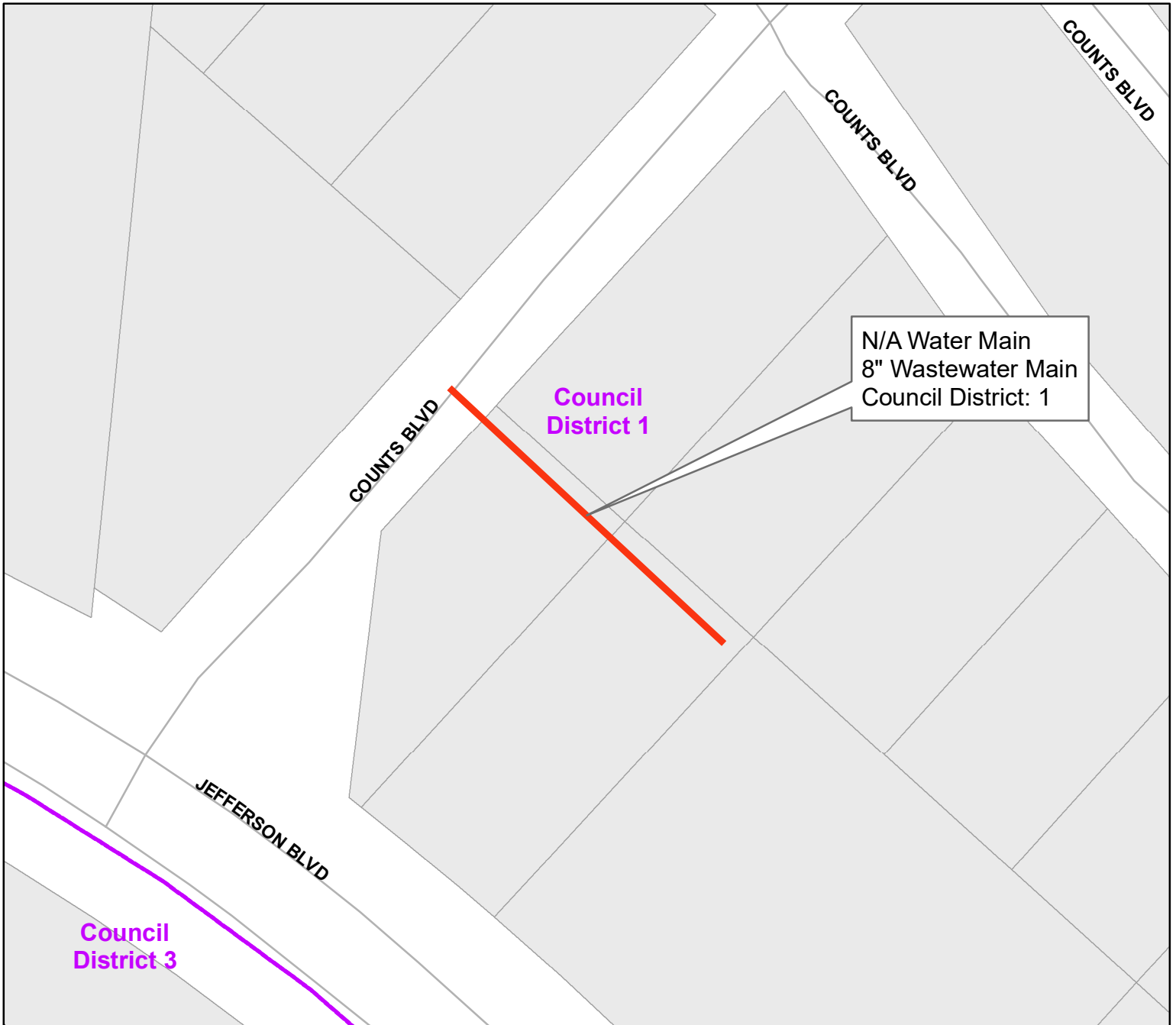


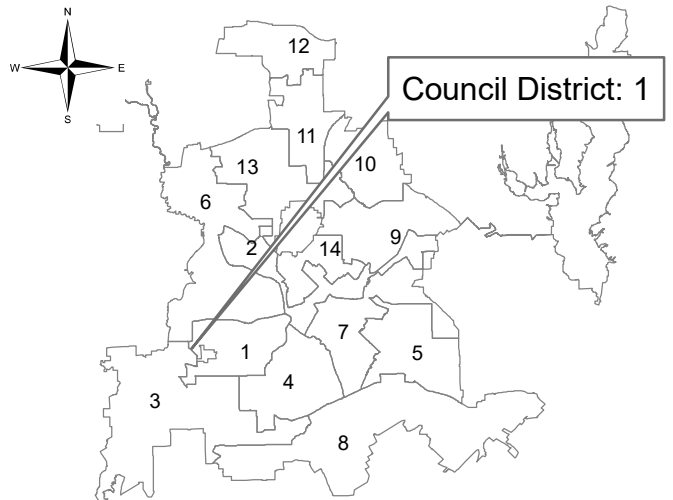
Counts Boulevard
from Counts Boulevard southwest



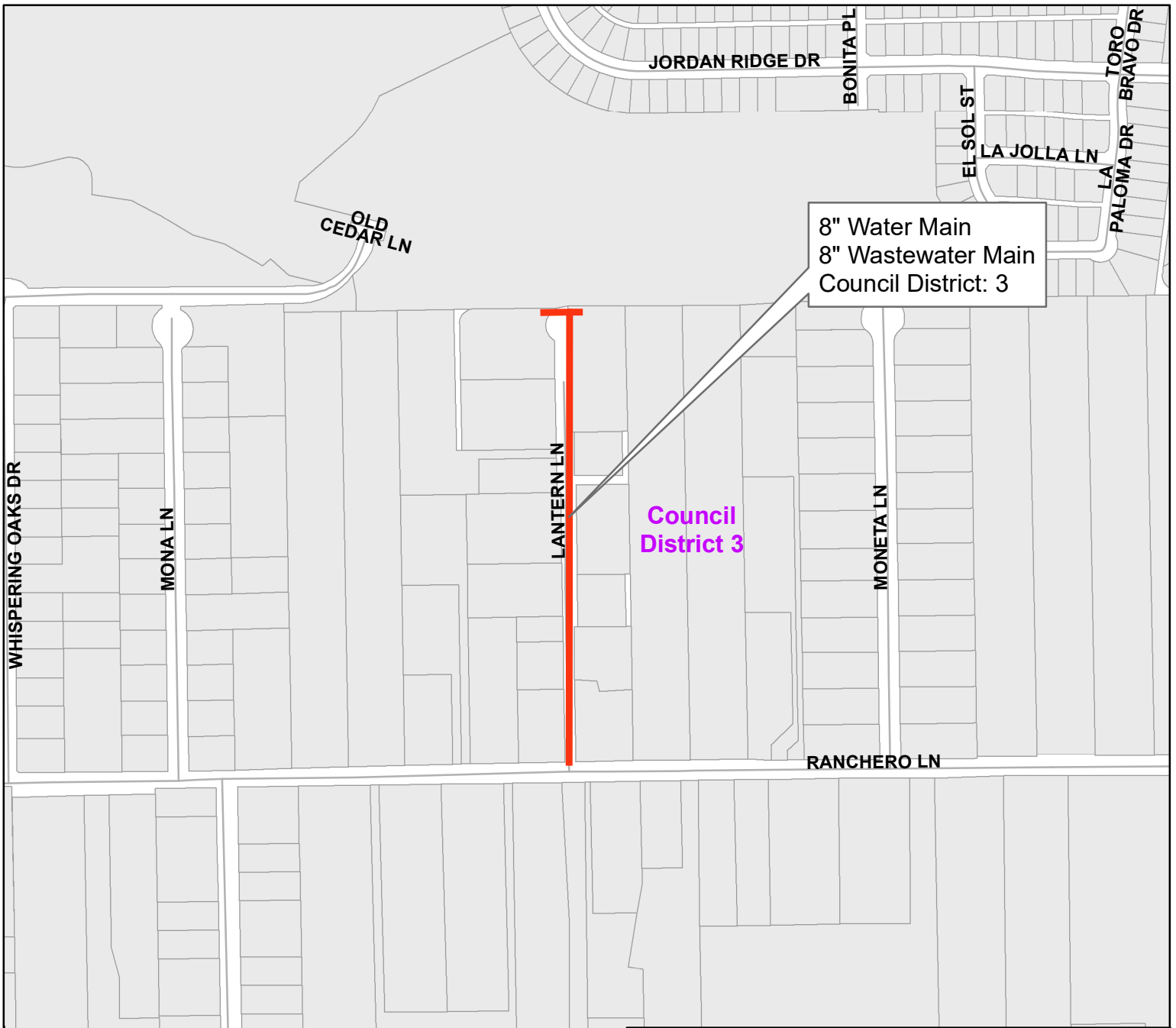
**Dallas Water Utilities
Contract No. 22-501/502
Water and Wastewater Main Installations
at 18 Locations**



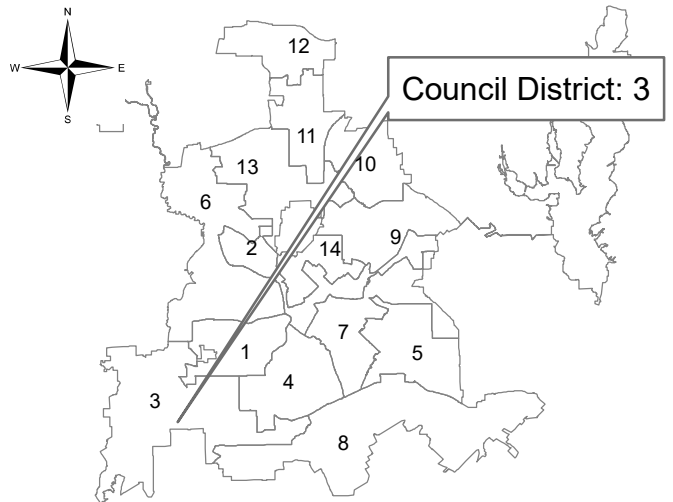
Easement between Counts Boulevard and Jefferson Boulevard
from Counts Boulevard southeast



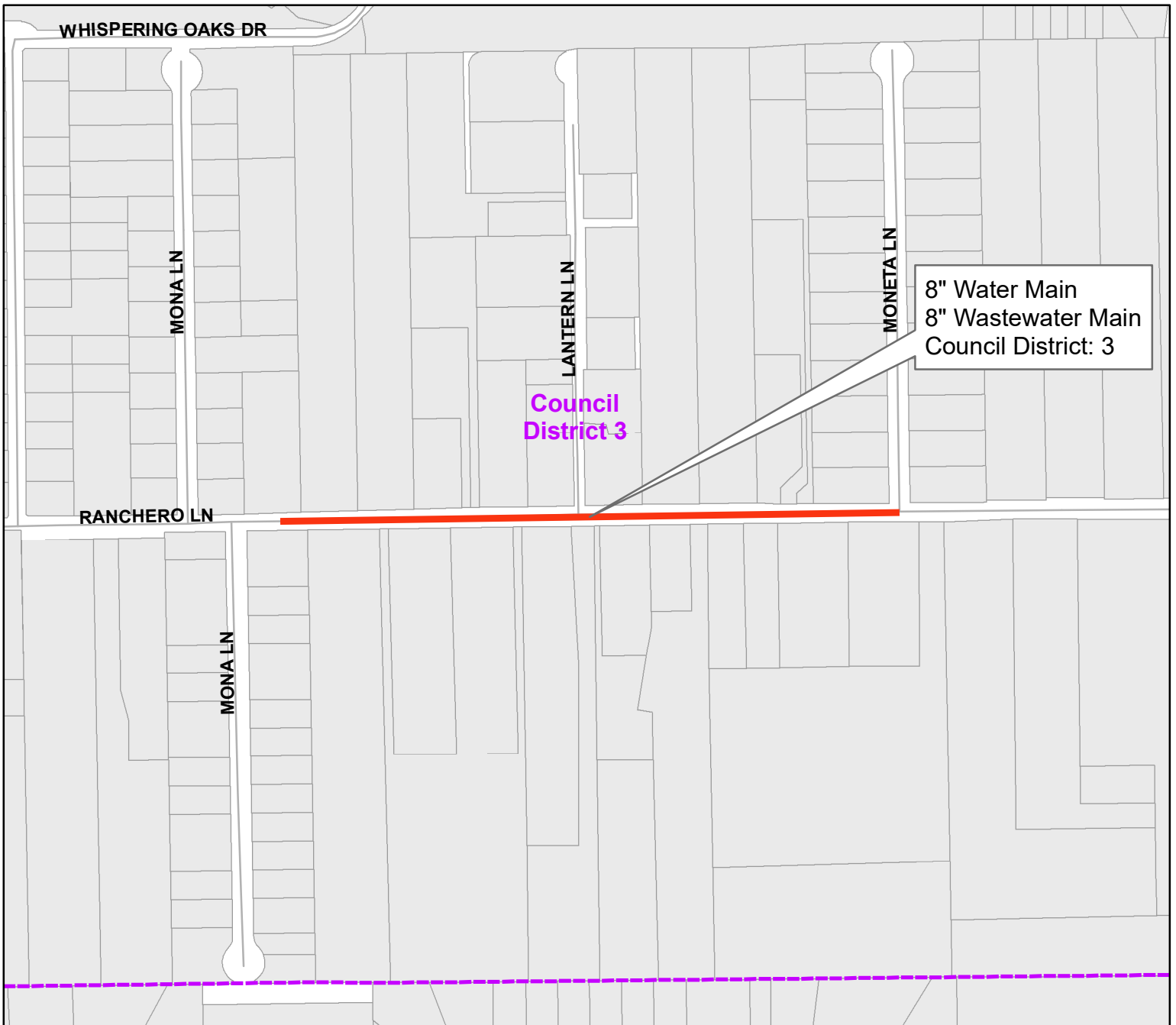
**Dallas Water Utilities
Contract No. 22-501/502
Water and Wastewater Main Installations
at 18 Locations**



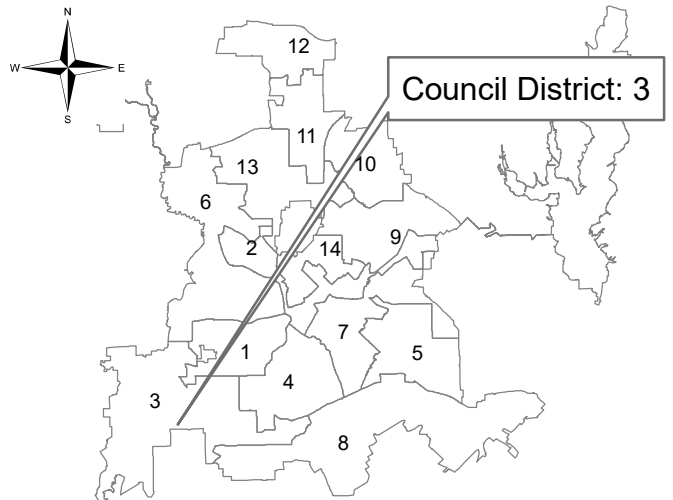
Lantern lane
from Rancho Lane north



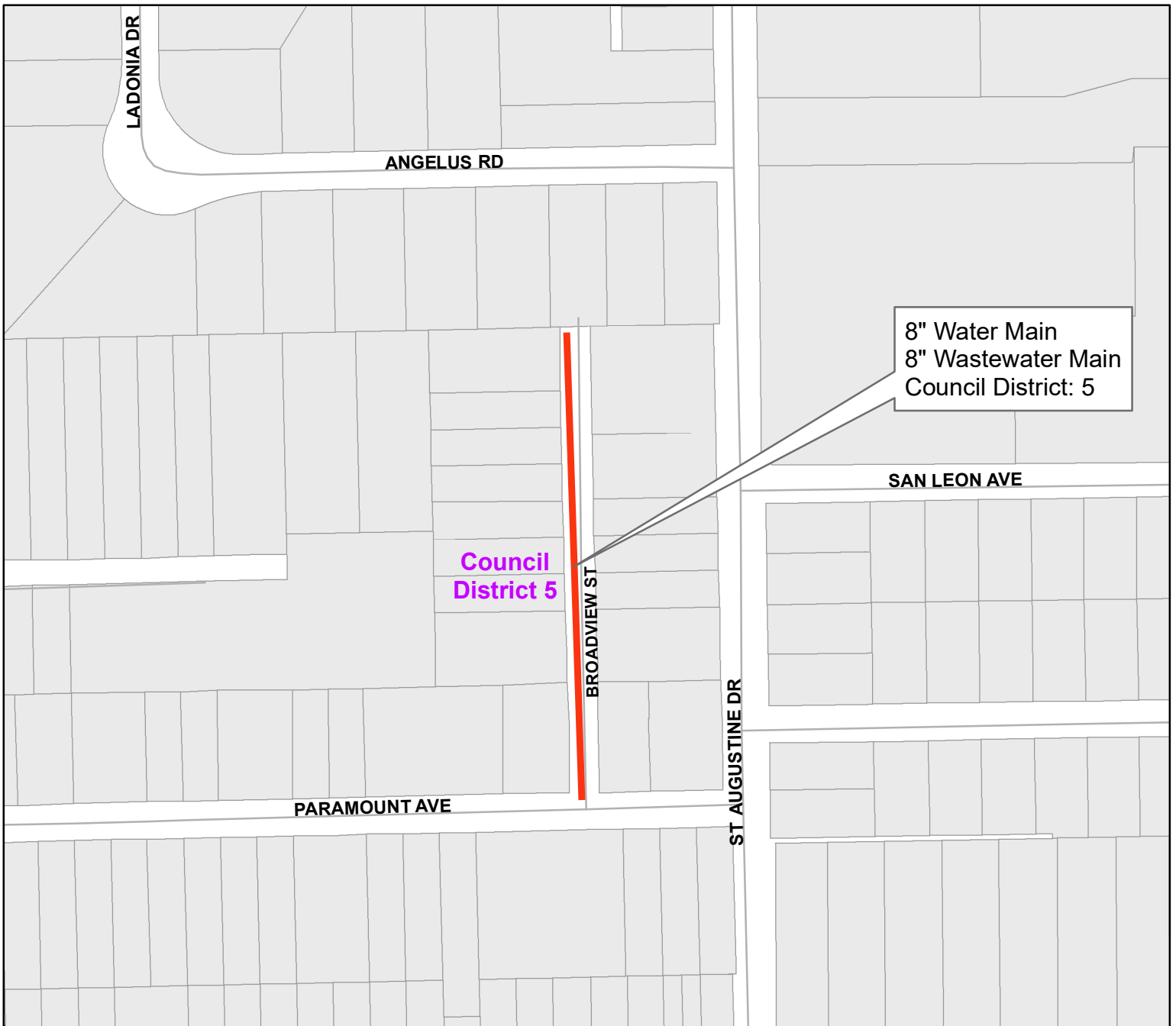
Dallas Water Utilities
Contract No. 22-501/502
Water and Wastewater Main Installations
at 18 Locations



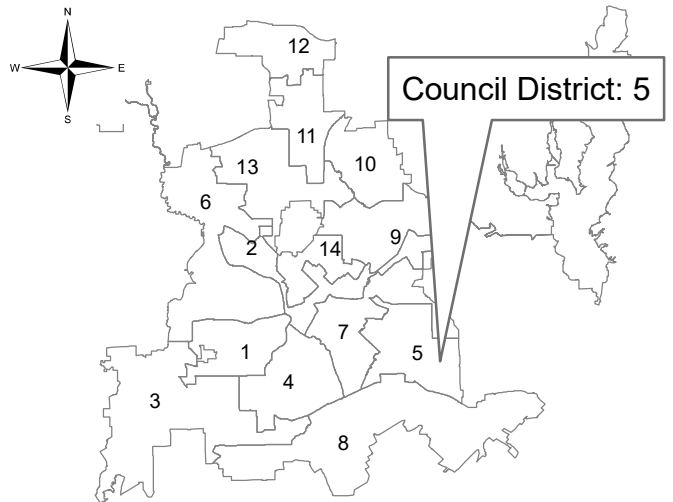
Ranchero Lane
 from east of Mona Lane to Moneta Lane



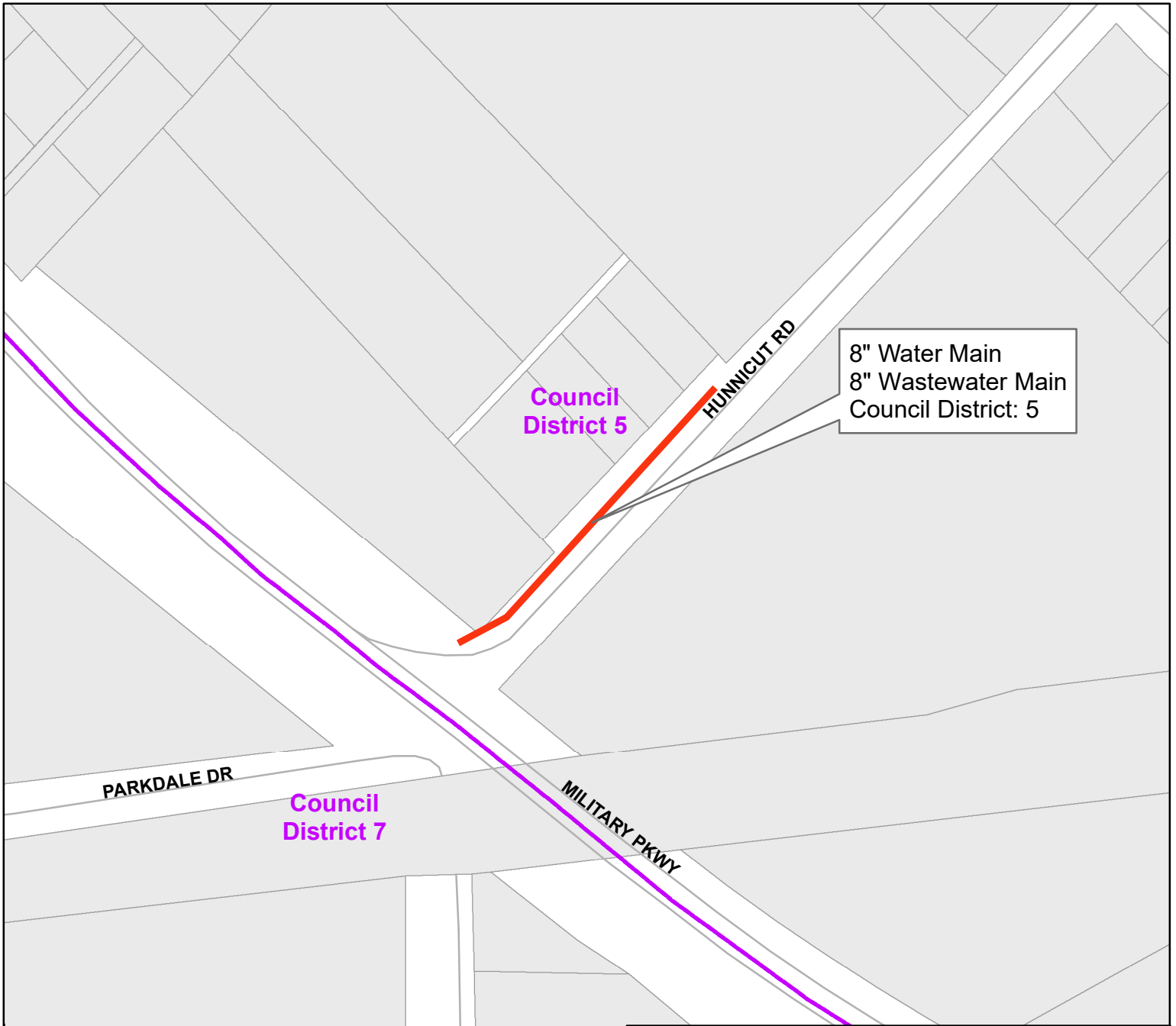
Dallas Water Utilities
Contract No. 22-501/502
Water and Wastewater Main Installations
at 18 Locations



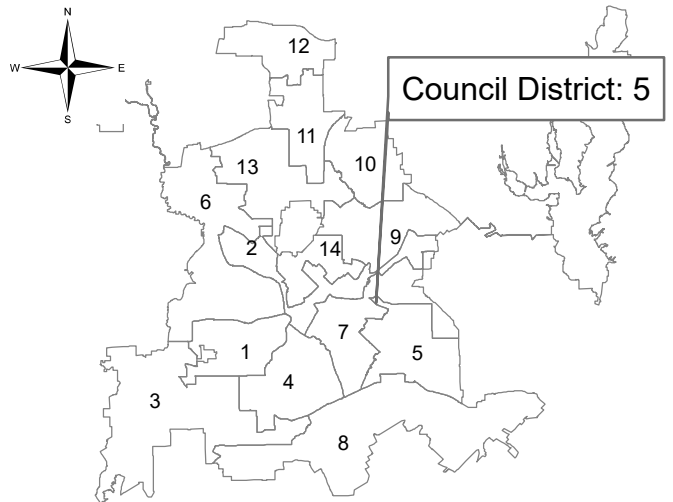
Broadview Street
from Paramount Avenue north



**Dallas Water Utilities
Contract No. 22-501/502
Water and Wastewater Main Installations
at 18 Locations**



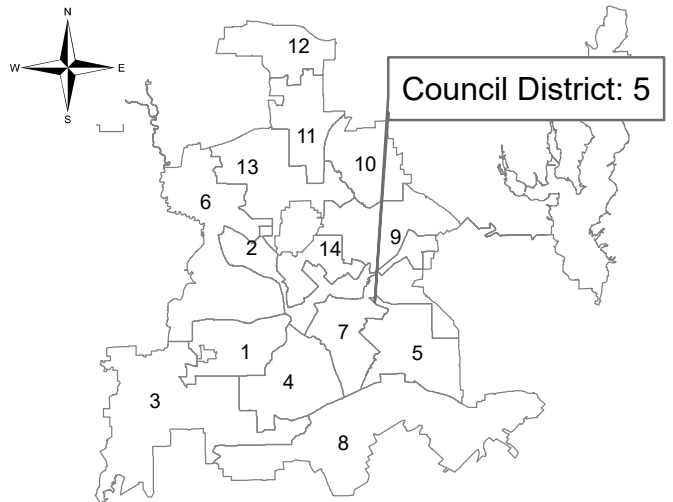
Hunnicut Road
from Military Parkway northeast



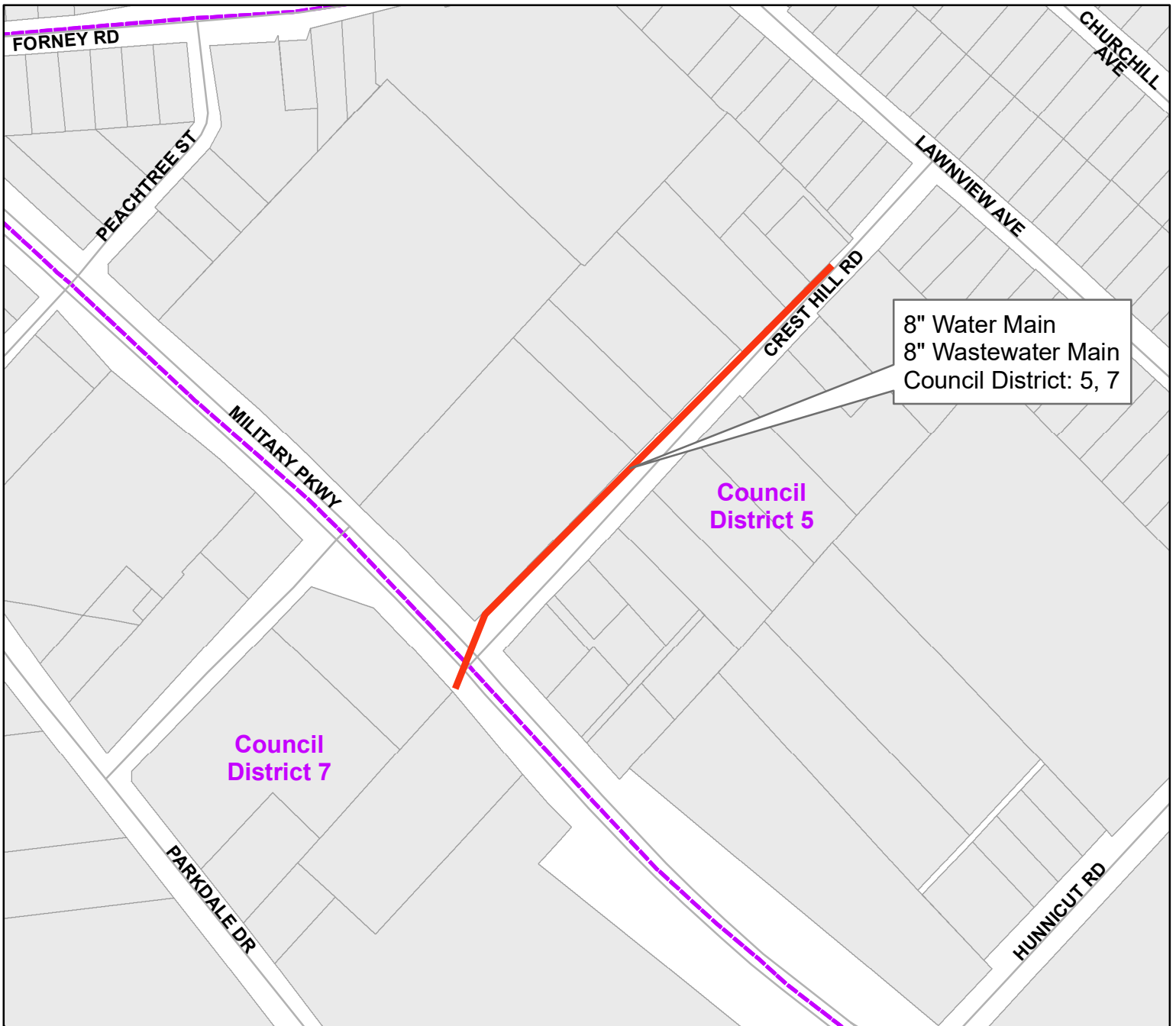
**Dallas Water Utilities
Contract No. 22-501/502
Water and Wastewater Main Installations
at 18 Locations**



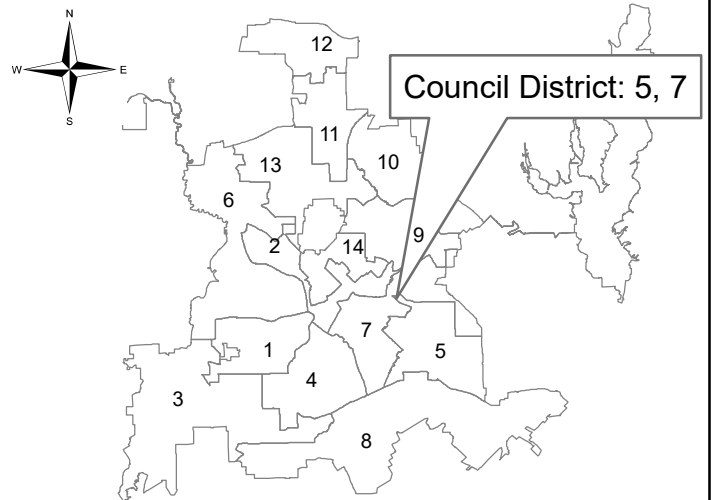
Military Parkway
from Hunnicut Road northwest



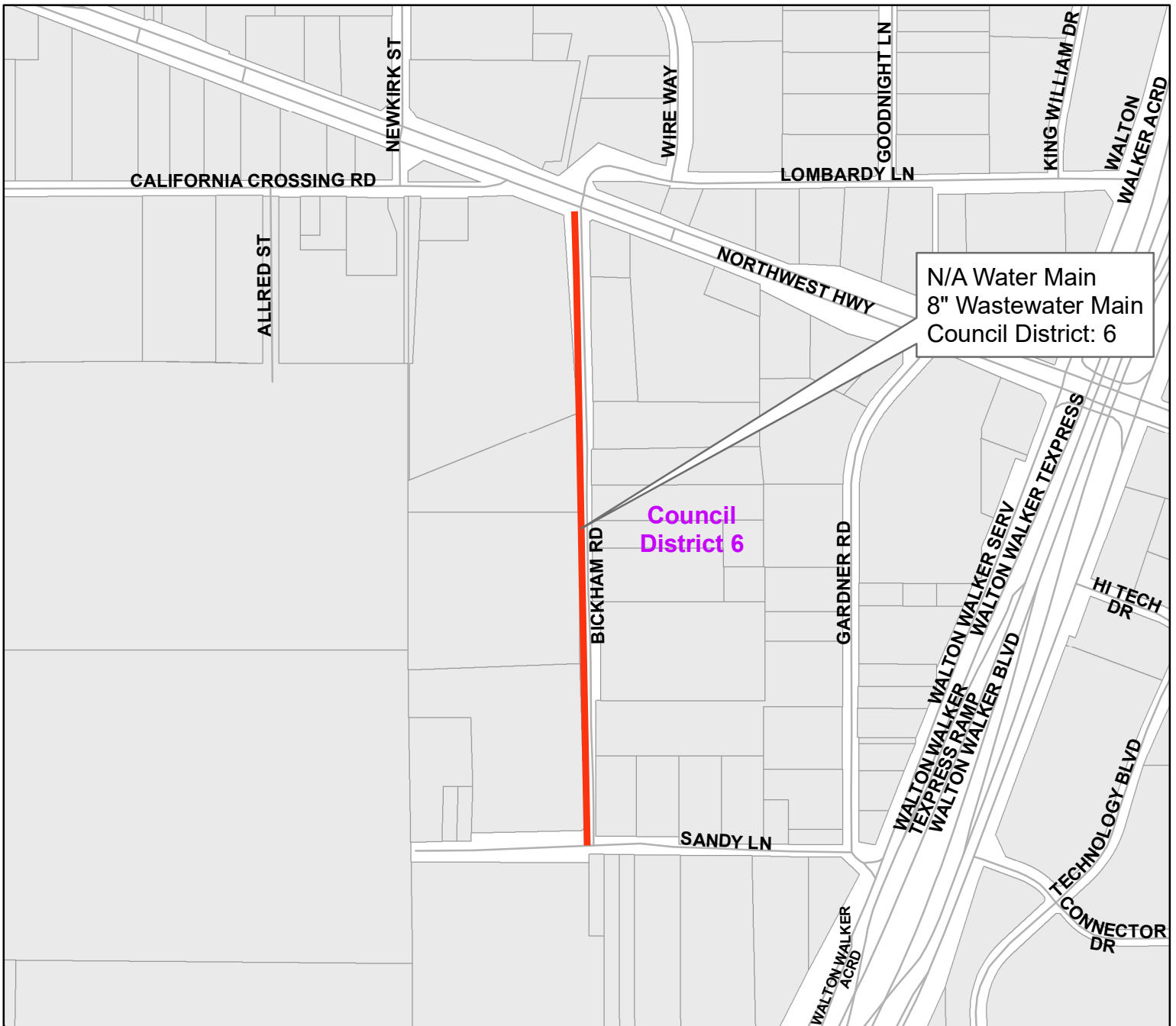
Dallas Water Utilities
Contract No. 22-501/502
Water and Wastewater Main Installations
at 18 Locations



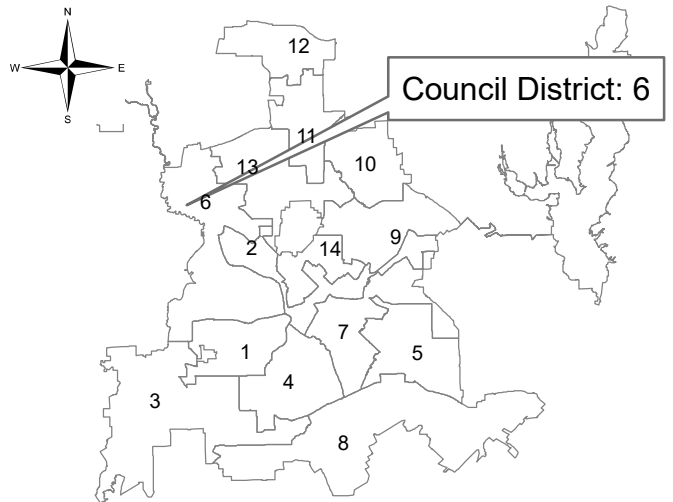
Crest Hill Road
from Military Parkway northeast



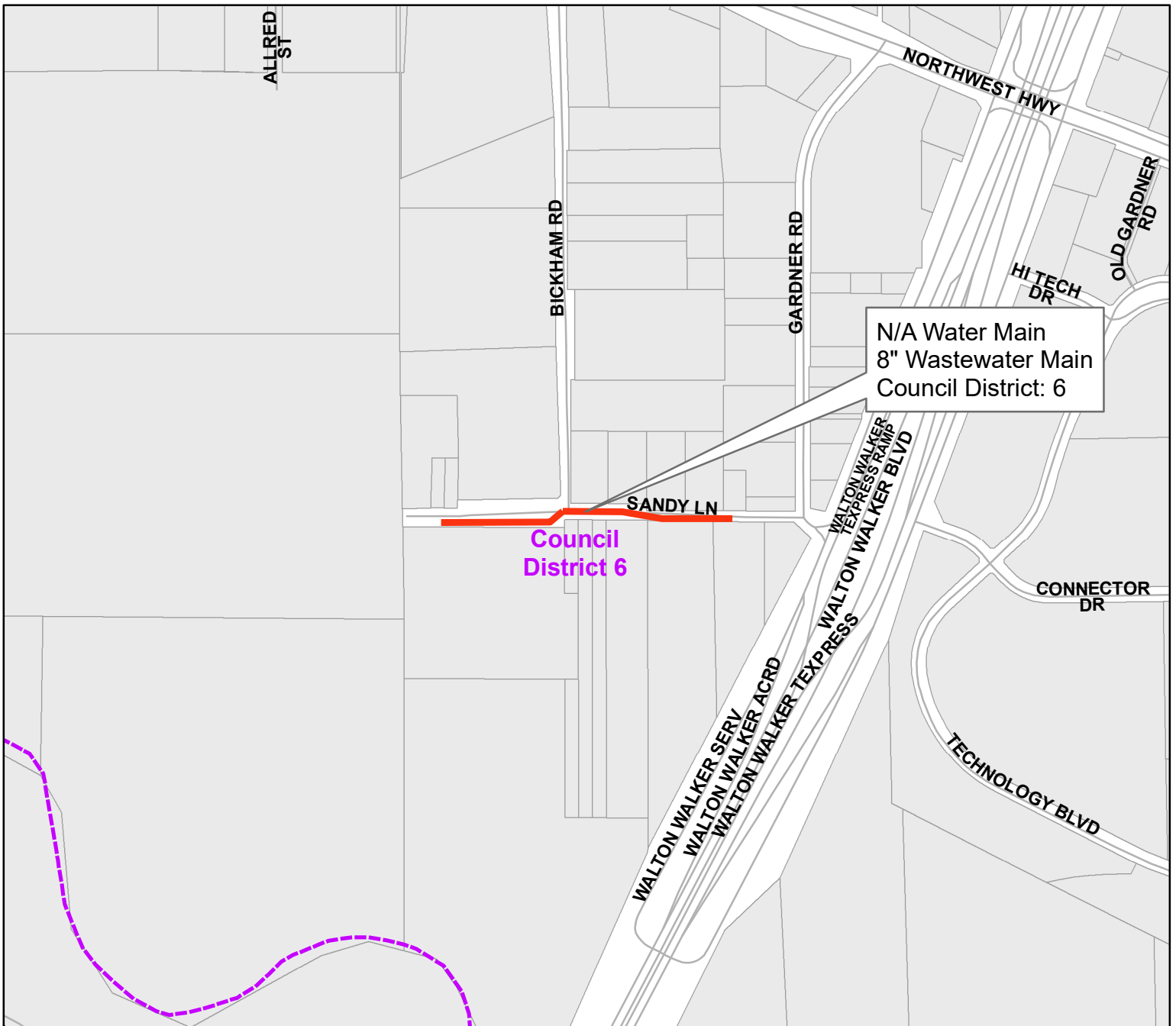
**Dallas Water Utilities
Contract No. 22-501/502
Water and Wastewater Main Installations
at 18 Locations**



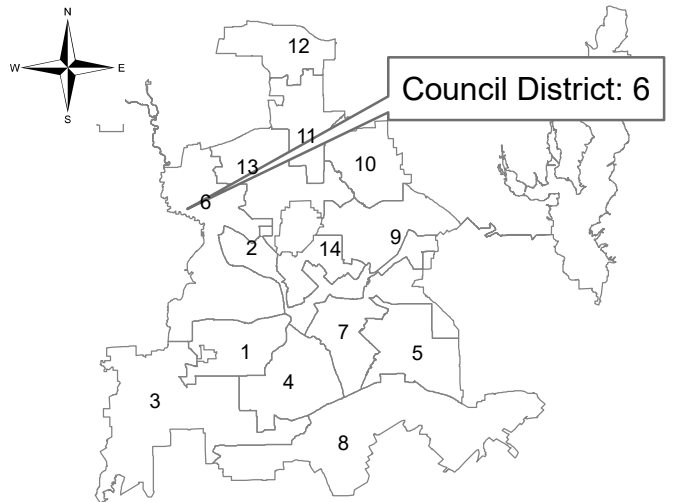
Bickham Road
from Sandy Lane north



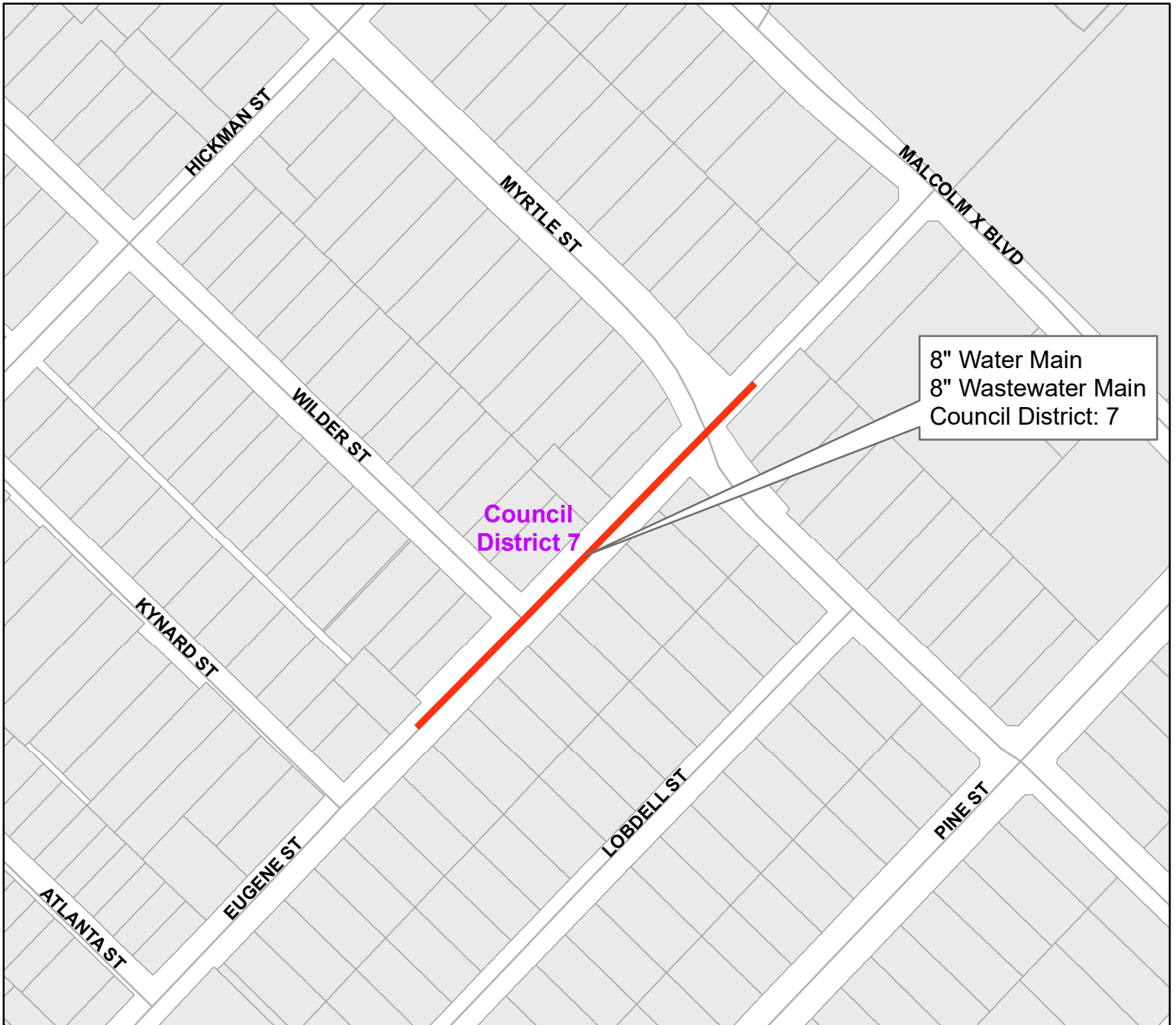
**Dallas Water Utilities
Contract No. 22-501/502
Water and Wastewater Main Installations
at 18 Locations**



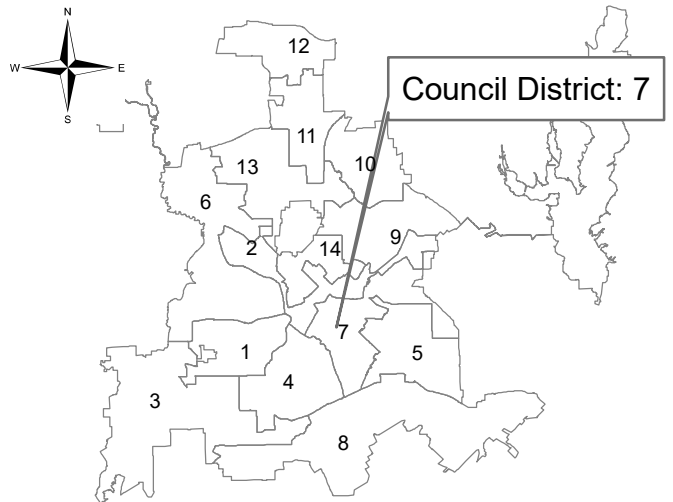
Sandy Lane
from west of Bickham Road east



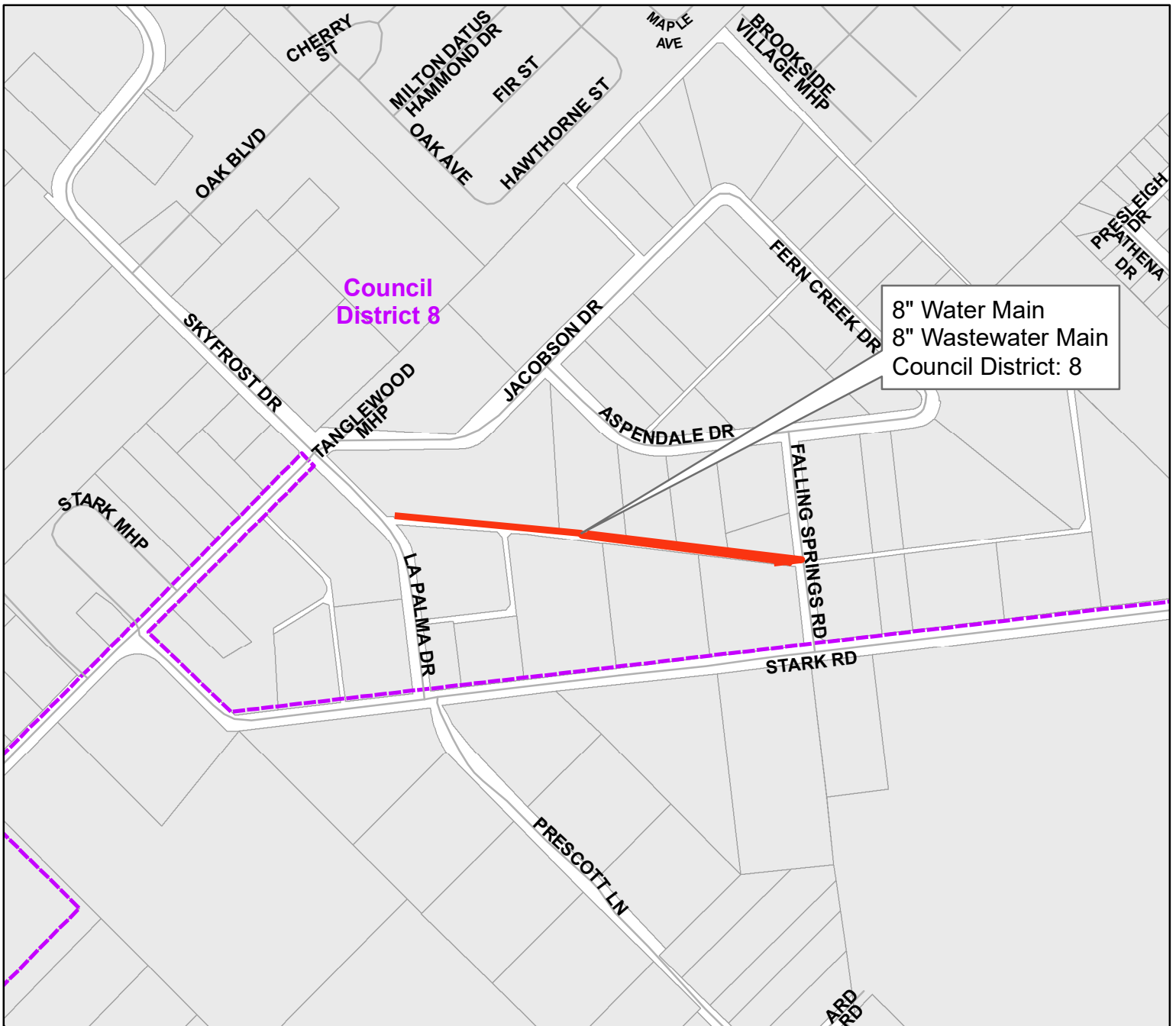
Dallas Water Utilities
Contract No. 22-501/502
Water and Wastewater Main Installations
at 18 Locations



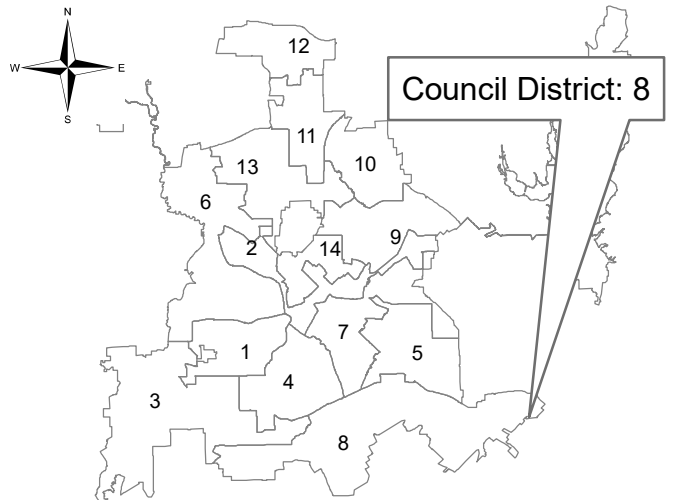
Eugene Street
 from east of Myrtle Street southwest



Dallas Water Utilities
Contract No. 22-501/502
Water and Wastewater Main Installations
at 18 Locations



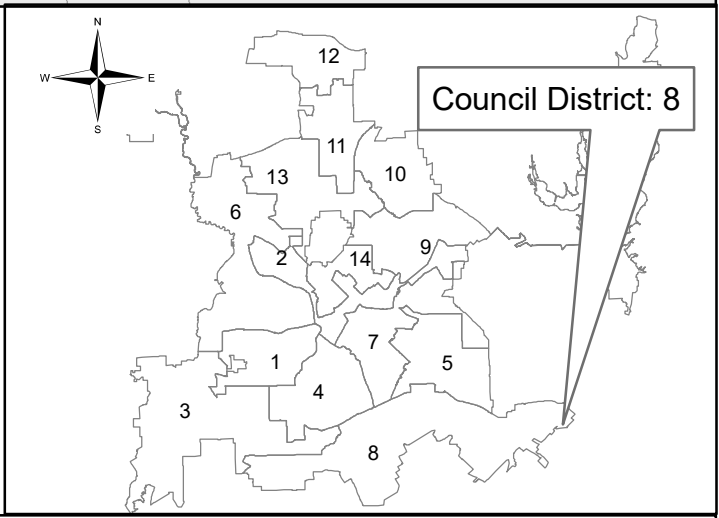
Alley between Aspendale Drive and Stark Road
 from Falling Springs Road to La Palma Drive



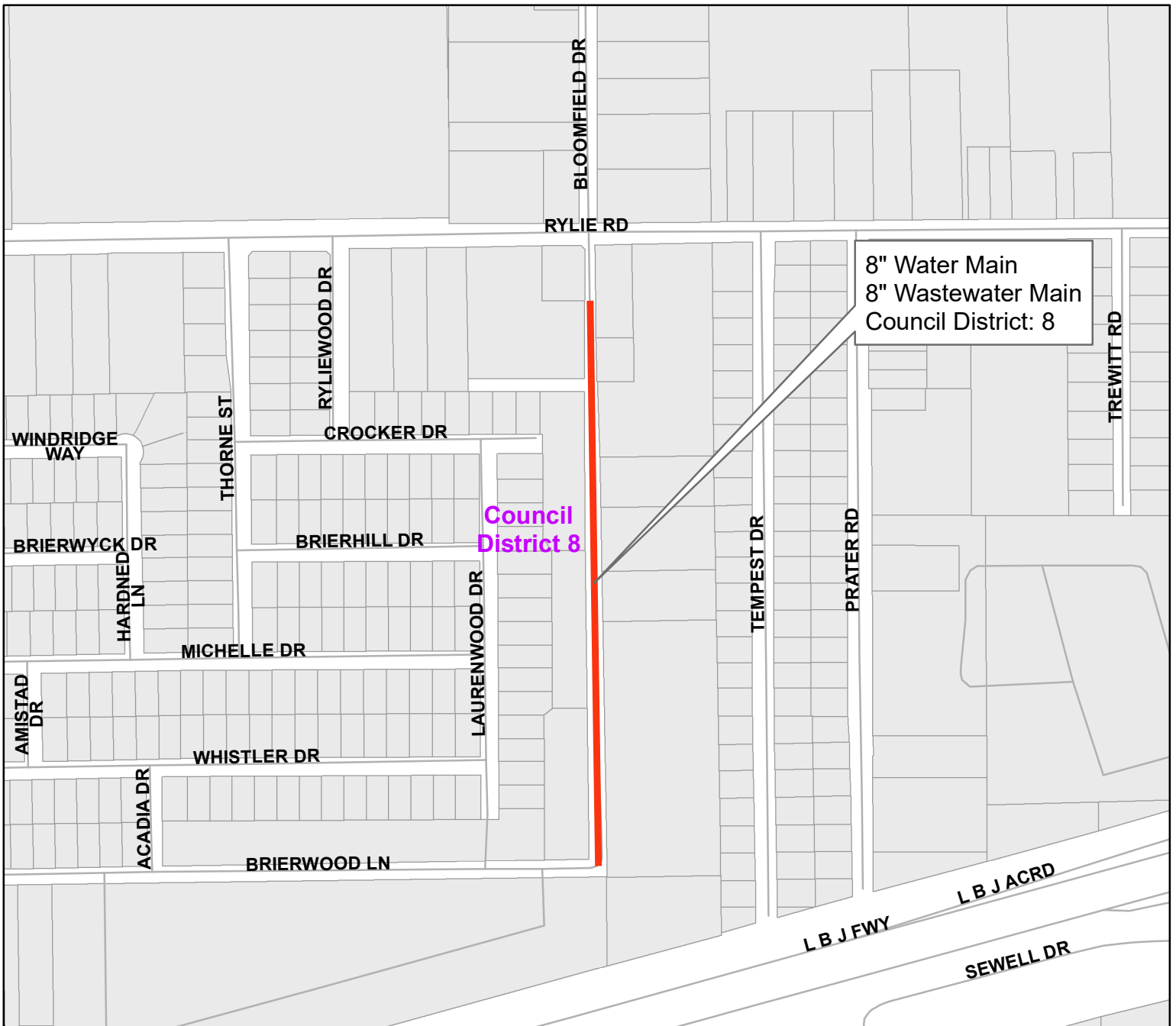
Dallas Water Utilities
Contract No. 22-501/502
Water and Wastewater Main Installations
at 18 Locations



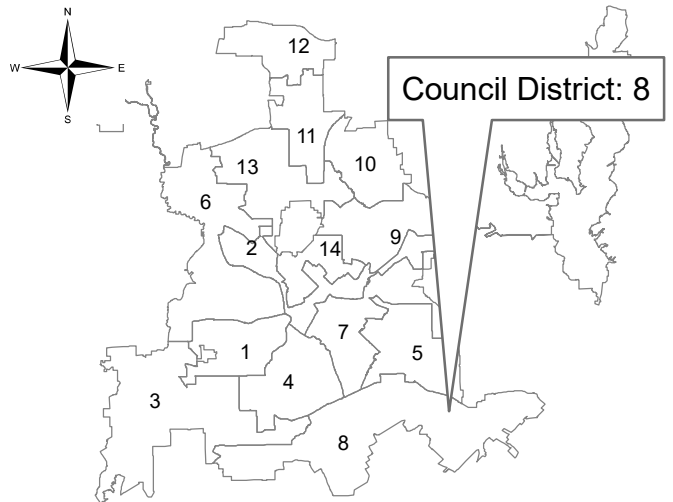
Aspendale Drive/Fern Creek Drive/Jacobson Drive
 from Aspendale Drive to Jacobson Drive



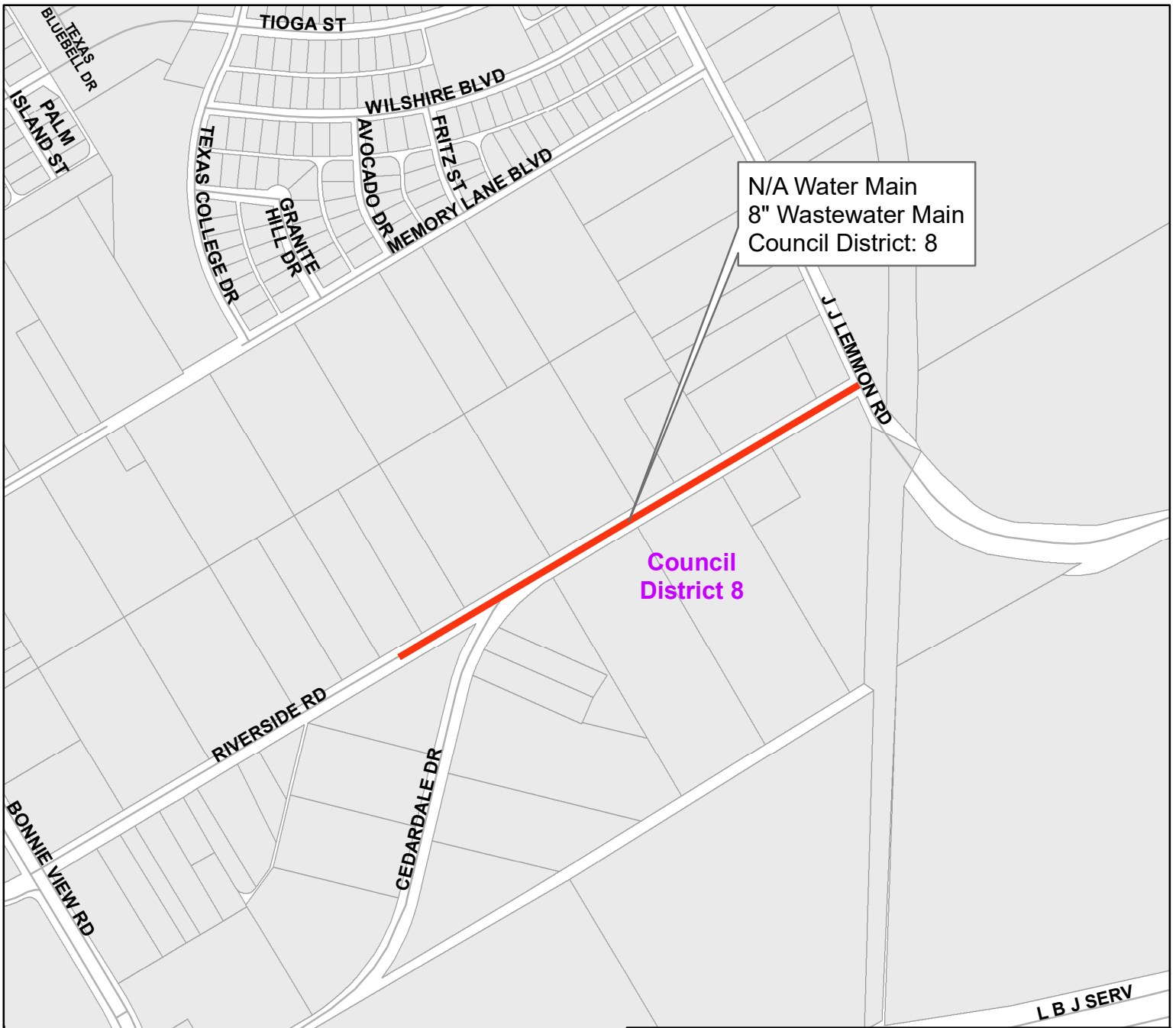
Dallas Water Utilities
Contract No. 22-501/502
Water and Wastewater Main Installations
at 18 Locations



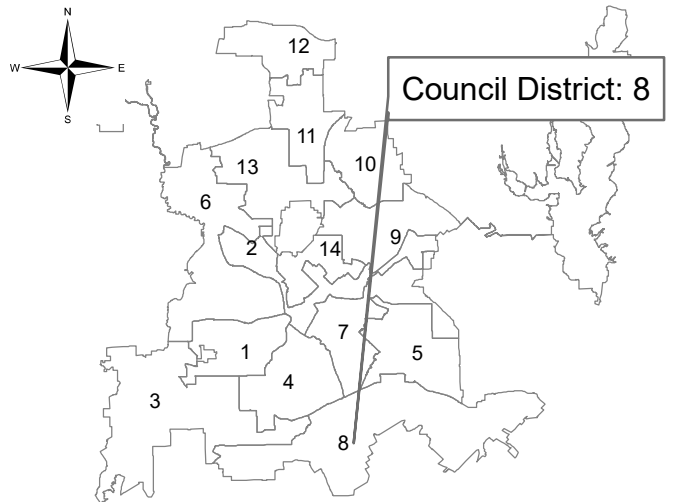
Bloomfield Drive
 from Brierwood Lane to south of Rylie Road



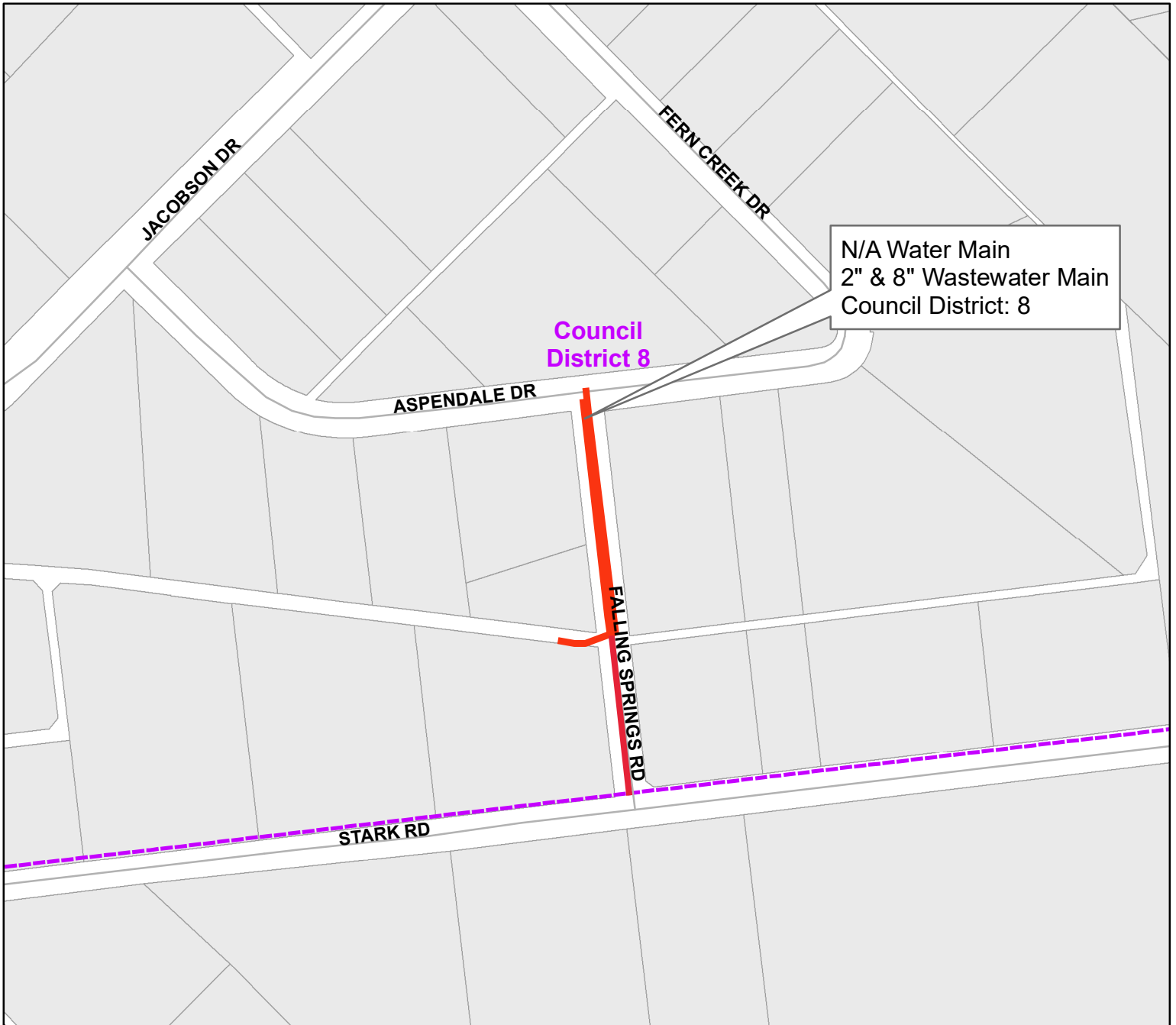
Dallas Water Utilities
Contract No. 22-501/502
Water and Wastewater Main Installations
at 18 Locations



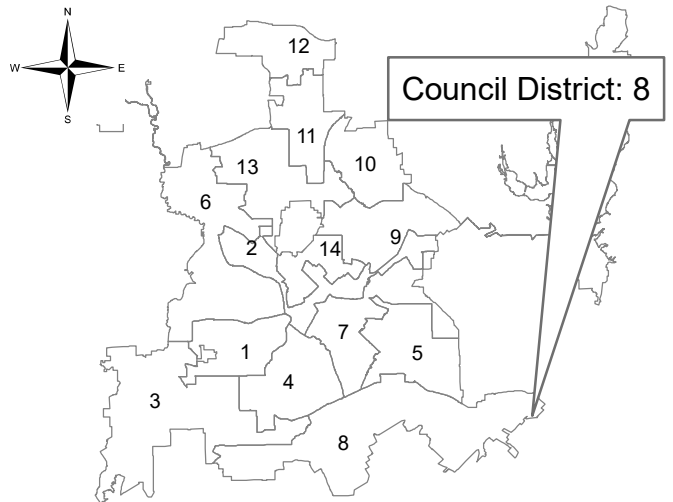
Cedardale Drive
 from J J Lemmon Road southwest



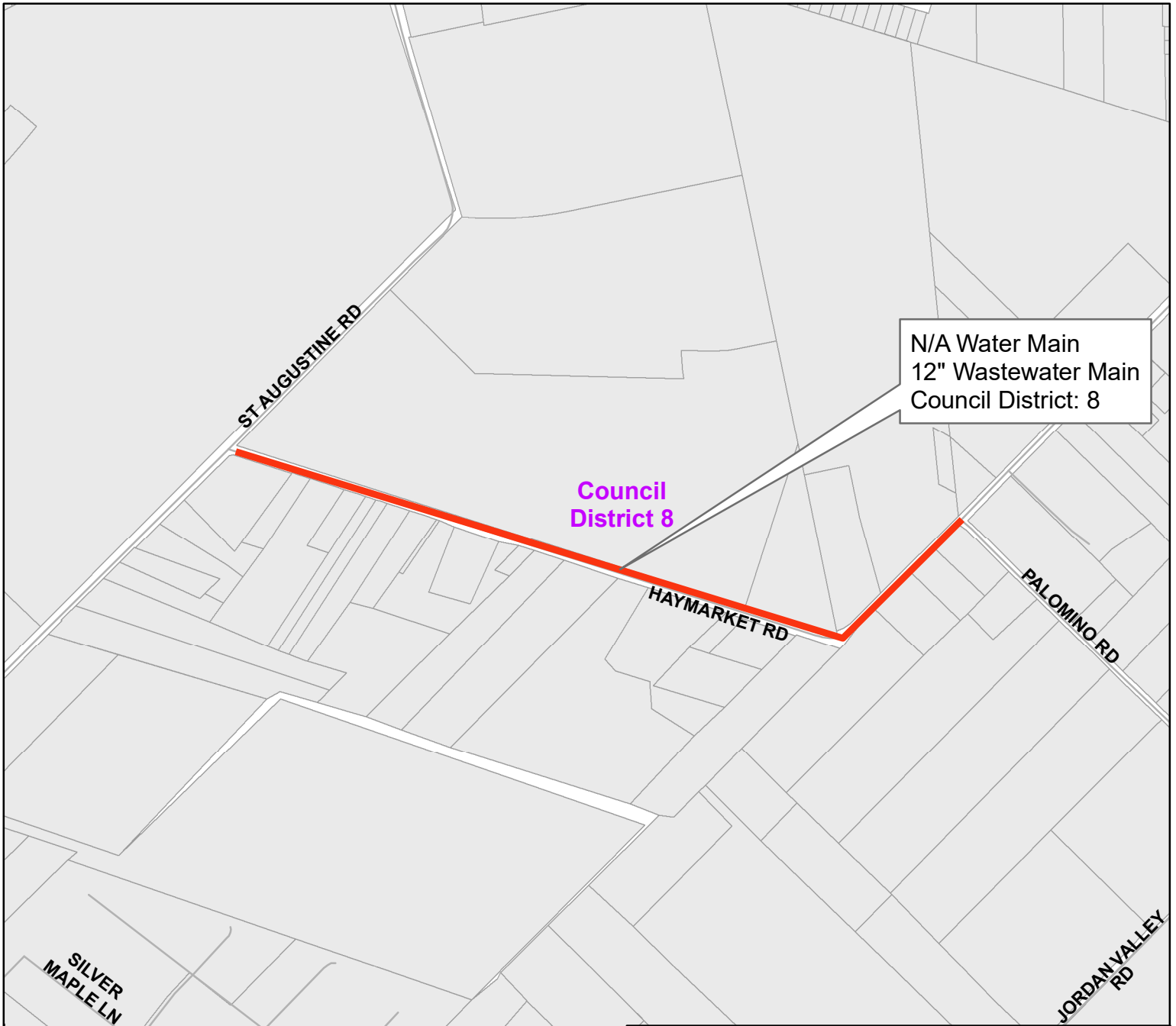
Dallas Water Utilities
Contract No. 22-501/502
Water and Wastewater Main Installations
at 18 Locations



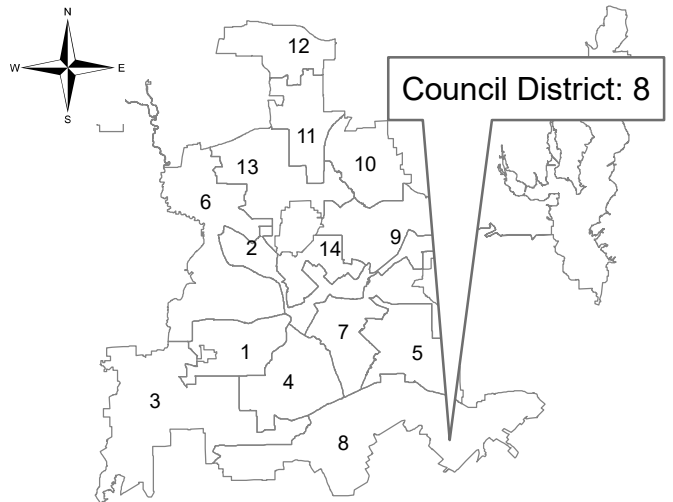
Falling Springs Road
from Aspendale Drive to Stark Road



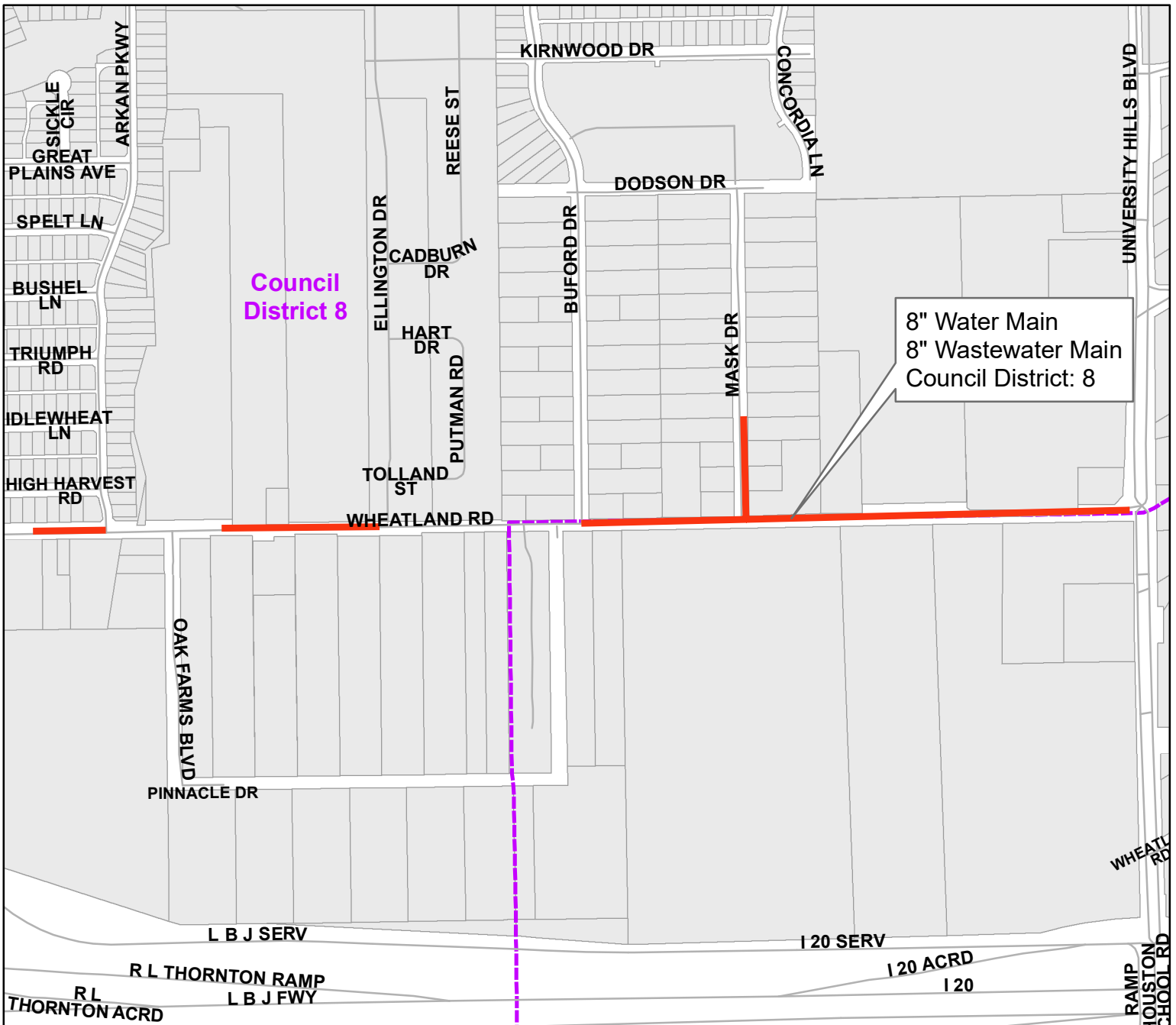
Dallas Water Utilities
Contract No. 22-501/502
Water and Wastewater Main Installations
at 18 Locations



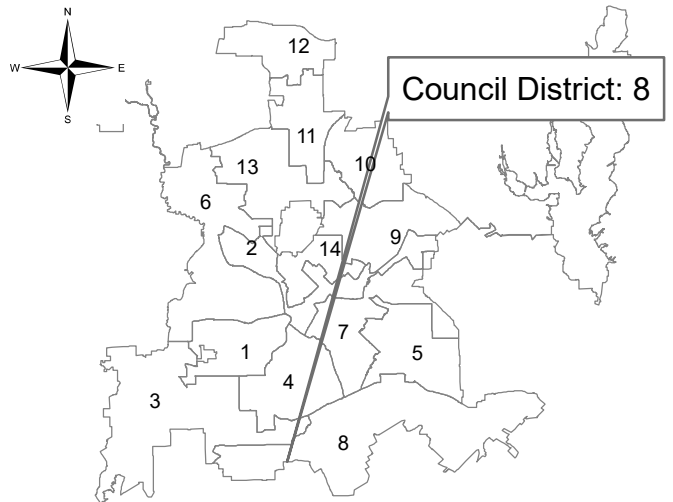
Haymarket Road
 from Palomino Road to St. Augustine Road



Dallas Water Utilities
Contract No. 22-501/502
Water and Wastewater Main Installations
at 18 Locations



Wheatland Road/Mask Drive
 from University Hills Boulevard west/from
 Wheatland Road north



Dallas Water Utilities
Contract No. 22-501/502
Water and Wastewater Main Installations
at 18 Locations