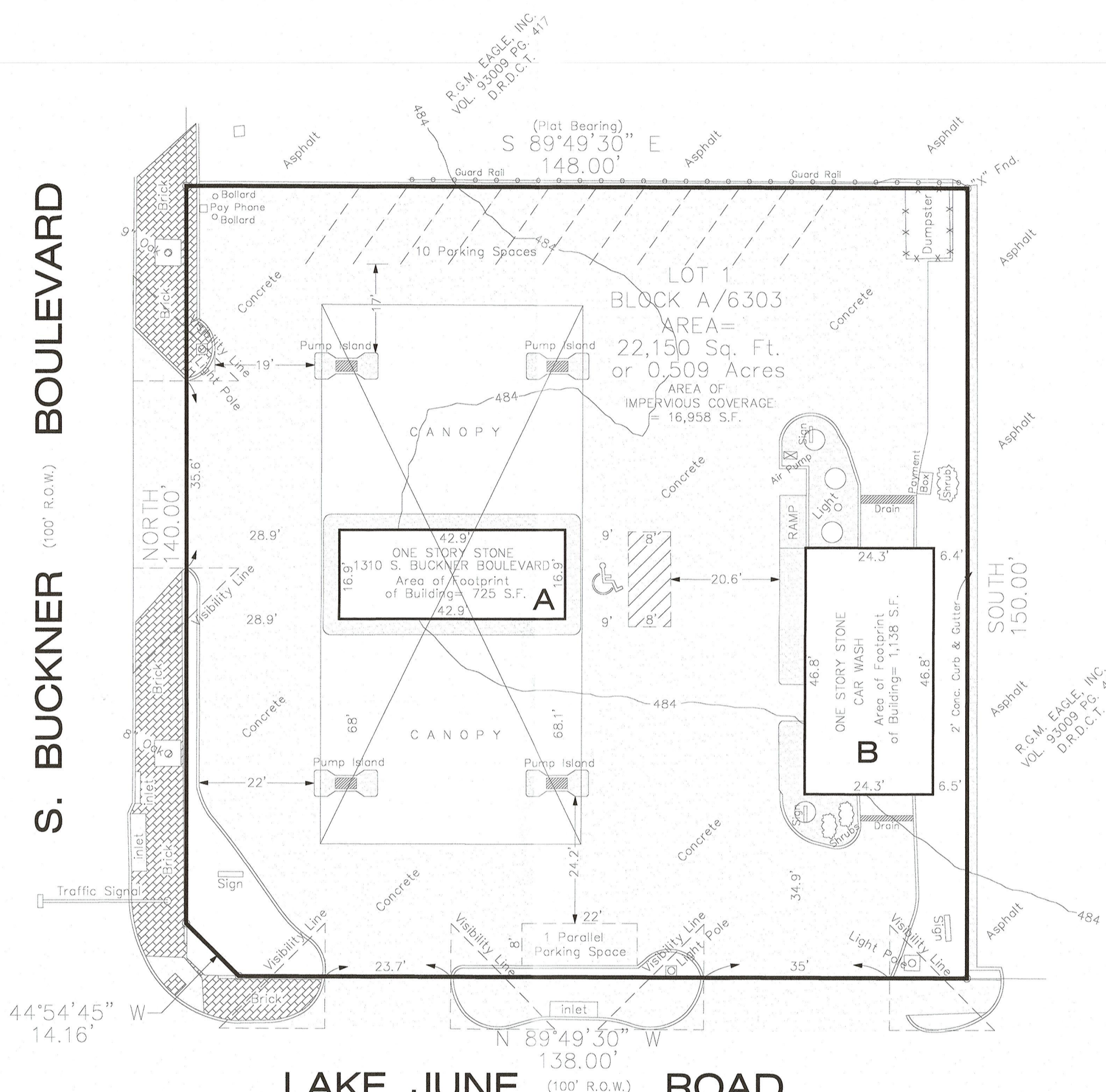


VICINITY MAP  
(Not to Scale)  
(Mapaco Page 58-L)

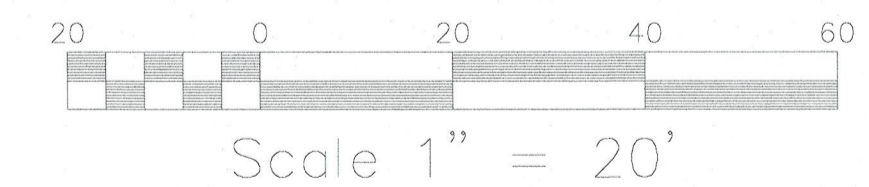
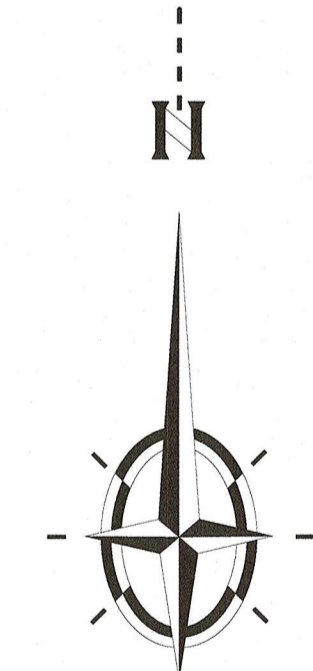


**SITE PLAN**

**CIRCLE K STORE**  
**1310 S. BUCKNER BOULEVARD**  
**DALLAS, TX. 75217**  
**LOT 1, BLOCK A/6303**  
**Phillips Buckner Addition**  
**Volume 87172, Page 2202**  
**Map Records, Dallas County, Texas**  
**J.A. Leonard Survey, Abstract No. 802**  
**City of Dallas, Dallas County, Tx.**

MARCH 14, 2016

Z223-



PARKING TABLE

	REQUIRED PARKING	PROPOSED PARKING
1310 S. Buckner Boulevard	Building "A": 725 Square Feet - 4 Parking Spaces Building "B": 1,138 Square Feet - 6 Parking Spaces Gas Pumps: 2 Parking Spaces 12 TOTAL PARKING SPACES (of which 1 must be Handicapped Parking Space)	Building "A": 725 Square Feet - 4 Parking Spaces Building "B": 1,138 Square Feet - 6 Parking Spaces Gas Pumps: 2 Parking Spaces 12 TOTAL PARKING SPACES (of which 1 must be Handicapped Parking Space)

**LEGEND**

	CONCRETE PAVEMENT
	ASPHALT PAVEMENT
	Deed Records Dallas County, Texas.
	Map Records Dallas County, Texas.
	Official Property Records Dallas County, Texas.
	FENCE LINE

1310 S. BUCKNER BOULEVARD  
ZONED: PD

**SURVEYING ASSOCIATES**  
1018 SOUTH BECKLEY AVE.

DALLAS, TEXAS 75203  
FIRM Registration / License No. 10040200

PHONE (214) 948-3324  
FAX (214) 946-7540  
Email: brychlik@swbell.net

**DRAWN BY**  
Lynn L.

**6-188-SUP**

**JOB NO.**