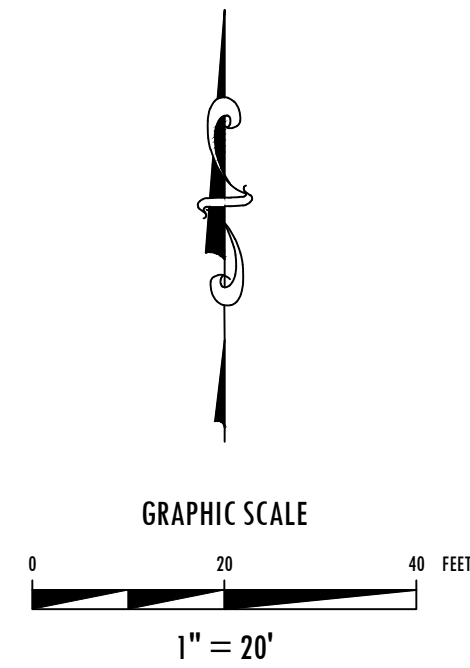
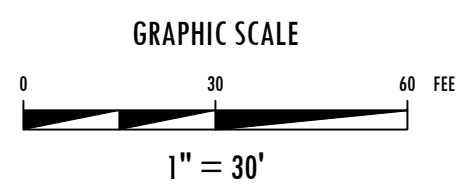
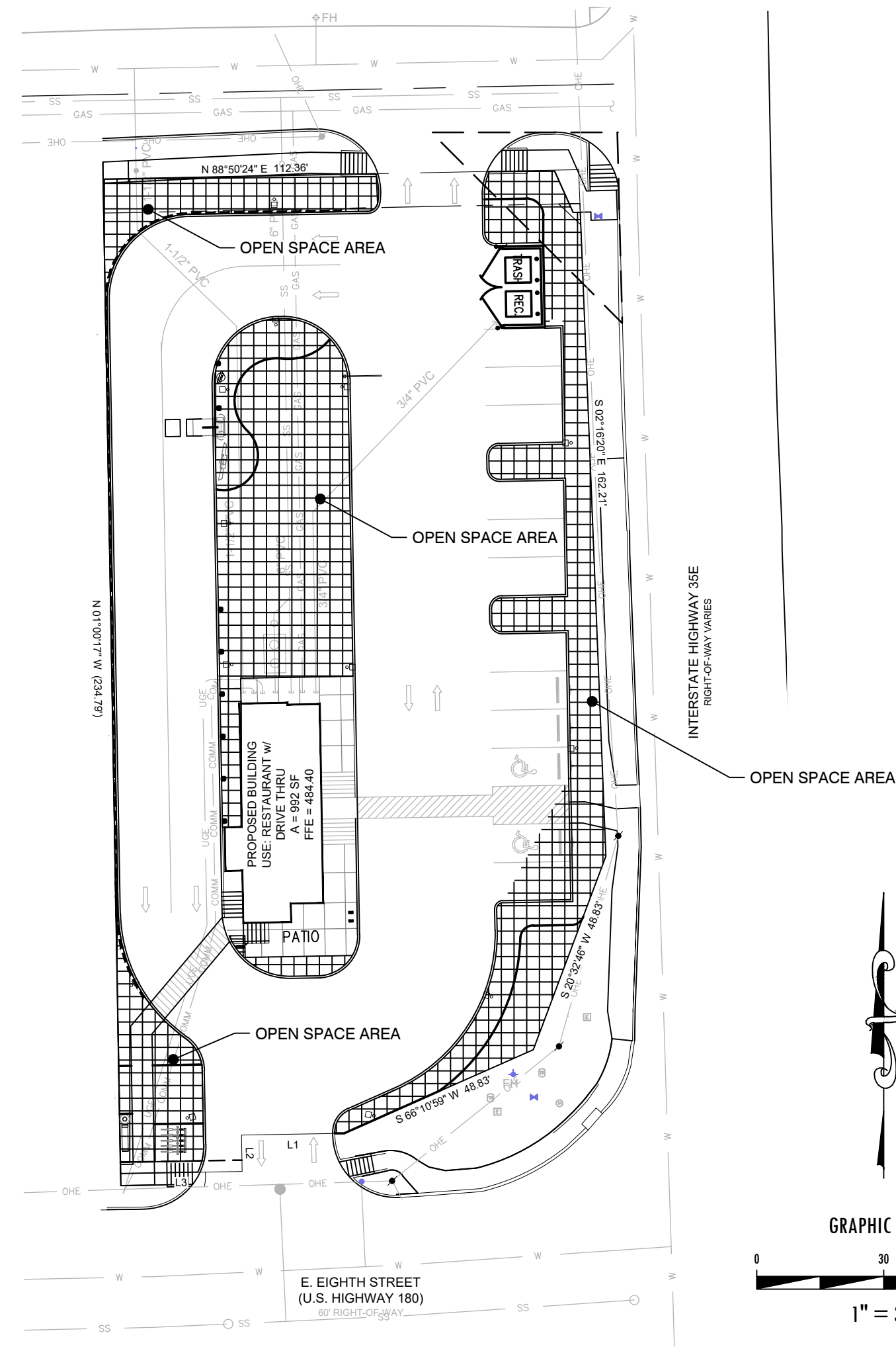


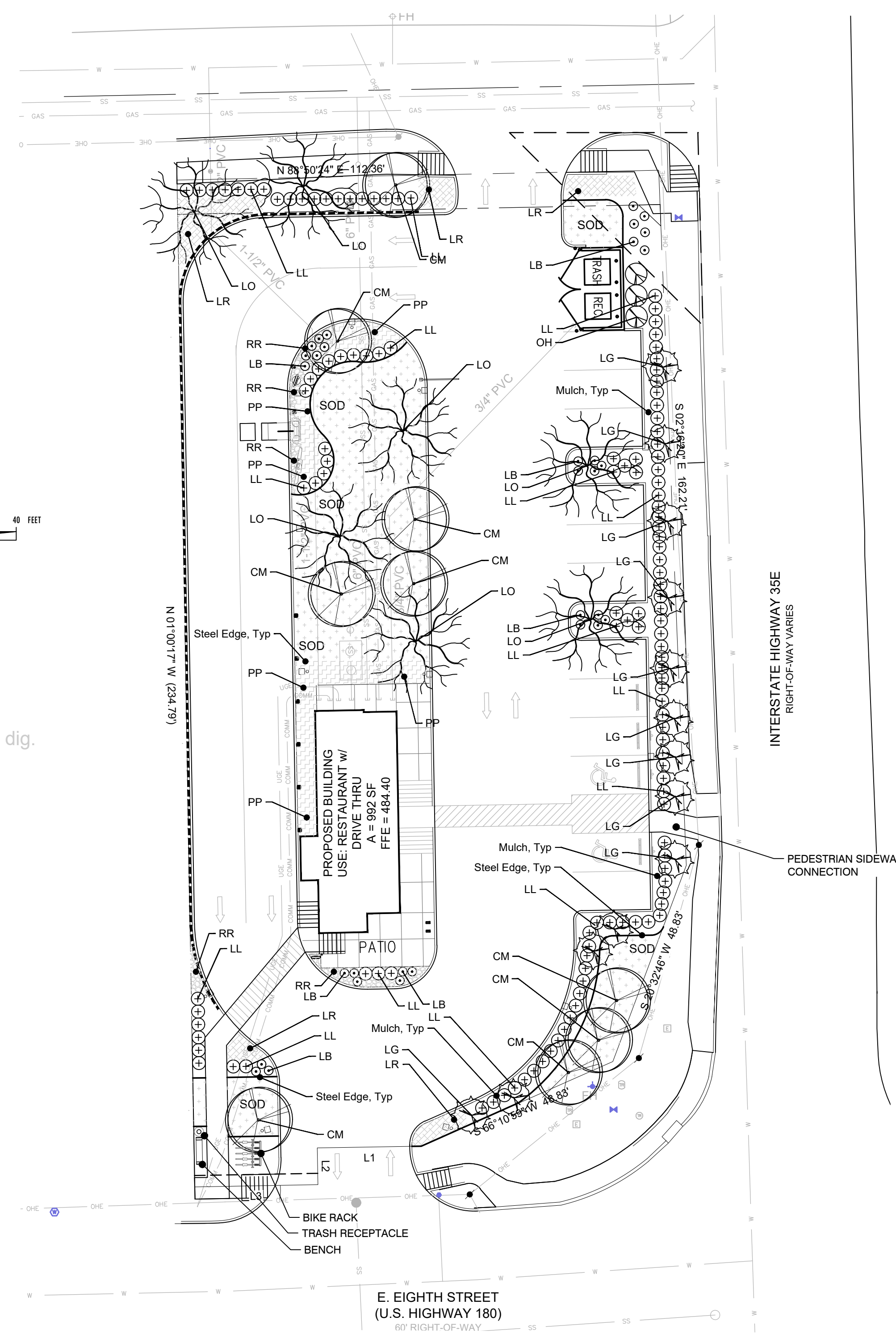
OPEN SPACE KEY



LANDSCAPE CALCULATIONS for the City of Dallas

	REQUIRED	PROPOSED
Open Space Requirements		
Site Area: 25,029 sq ft. 8 % Open Space Required	2,002 sf	3,016 sf (12.1%)
General Landscape Requirements		
Street Trees: 1 Large Tree / 40LF of Frontage E. Eighth Street @ 101.88 LF	2 Trees	4 Small Trees
Dale Street @ 112.36 LF	2 Trees	2 Trees
Development Type Regulations - GC General Commercial		
Site Trees: 1 Tree / 4,000SF of Lot Area @ 25,030 SF	6.3 Trees	7 Trees
Surface Parking Screening and Landscaping -		
Landscaping of off-street parking	Each parking space within 60' of a large tree	Provided
No building between sidewalk and parking - Perimeter Buffer	Planting strip not less than 5' with a continuous hedge	Provided
Planting Zone - Street trees in planting zone		
Buffer Strip: 1 Large Tree, 3 Small Trees / 50 LF @ 207.88LF	*4 Large Trees 12 Small Trees	*4 Large Trees 12 Small Trees
Pedestrian Amenities		
Benches, Trash Receptacles, Bicycle Parking 1 per 300 feet of frontage on at least one primary street	1 bench, 1 trash receptacle, 1, 5 - bicycle rack	1 bench, 1 trash receptacle, 1, 5 - bicycle rack

*Required Trees are located throughout the site due to site and utility conflicts.



Plant Material List

SYM.	KEY	QTY.	COMMON NAME SCIENTIFIC NAME	O.C.	ROOT	SIZE	HEIGHT	SPREAD	COMMENT
LO	7	7	Live Oak Quercus virginiana	N/A	B&B	3" cal.	12' min.	6' min.	Full Canopy, Healthy, Good Form Strong Central Leader
CM	9	9	Crape Myrtle 'Delta Moonlight' Lagerstromia indica 'Delea'	N/A	Cont.	30 gal.	8' min.	4' min.	Full Canopy, Healthy, Good Form Multi-trunk, 3 cane minimum
LG	13	13	Little Gem Magnolia Magnolia grandiflora 'Little Gem'	N/A	Cont.	30 gal.	8' min.	4' min.	Full Canopy/Healthy, Good Form
OH	3	3	Oakland Holly Ilex hybrid 'Magland'	60"	Cont.	7 gal.	30" min.	18" min.	Full, Good Form, Healthy
LL	127	127	'Lemon-Lime' Nandina Nandina domestica 'Lemon-Lime'	36"	Cont.	7 gal.	30" min.	24" min.	Full, Good Form, Healthy
LB	33	33	Little Bunny Dwarf Fountain Grass Pennisetum alopecuroides 'Little Bunny'	24"	Cont.	3 gal.	6' min.	10" min.	Full, Healthy
PP	585	585	Purple Pixie Dwarf Weeping Loropetalum Loropetalum chinense 'Peack'	36"	Cont.	3 gal.	6' min.	18" min.	Full, Good Form, Healthy
LR	368	368	Liriope Liriope muscari	12"	Cont.	1 gal.	8" min.	8" min.	Full, Healthy
RR	235	235	Colorado River Rock 3"-5" min.	-	-	-	-	-	Locally Available
SOD	2,855	2,855	Tifway Hybrid Bermuda Grass Cynodon 'Tifway 419'	-	-	-	-	-	Locally Available

In accordance to the Current Edition of The American Standard for Nursery Stock

THIS SPACE RESERVED - BLDG INSPECTION

TEXAS REGISTRATION #14199

CLAYMOORE ENGINEERING

1903 CENTRAL DR. SUITE #406
PHONE: 817.281.0572
BEDFORD, TX 76021
WWW.CLAYMOOREENG.COM

FILE: 2021-002



EVERGREEN DESIGN GROUP

(800) 680-6630
15455 Dallas Pkwy., Ste 600
Addison, TX 75001
www.EvergreenDesignGroup.com

THESE PLANS ARE SUBJECT TO REVIEW & APPROVAL BY JURISDICTIONAL ENTITIES.

CONTRACT INFORMATION

CONTRACT NO.	DATE
CONTRACTOR	
CONTRACT NO. (IF APPLICABLE)	DATE
CONTRACTOR	
CONTRACT NO. (IF APPLICABLE)	DATE
CONTRACTOR	

REVISIONS

REV NO.	DATE	DESCRIPTION	BY
1	-	-	-

CLAYMOORE ENGINEERING

PLAT NO. BLDG PERMIT NO. DEV ENGINEERING TRACKING NOS

LANDSCAPE PLANTING PLAN

STARBUCKS 8TH DALLAS

PORTION OF LOTS 4 AND 5, BLOCK 80/3061

DEVELOPMENT SERVICES

CITY OF DALLAS, DALLAS COUNTY, TEXAS

REVIEW BY:	DRAWN BY:	DATE	FILE	NUMBER	SHEET
CLC	MBT	JUNE 15, 2022	-	-	LP-1