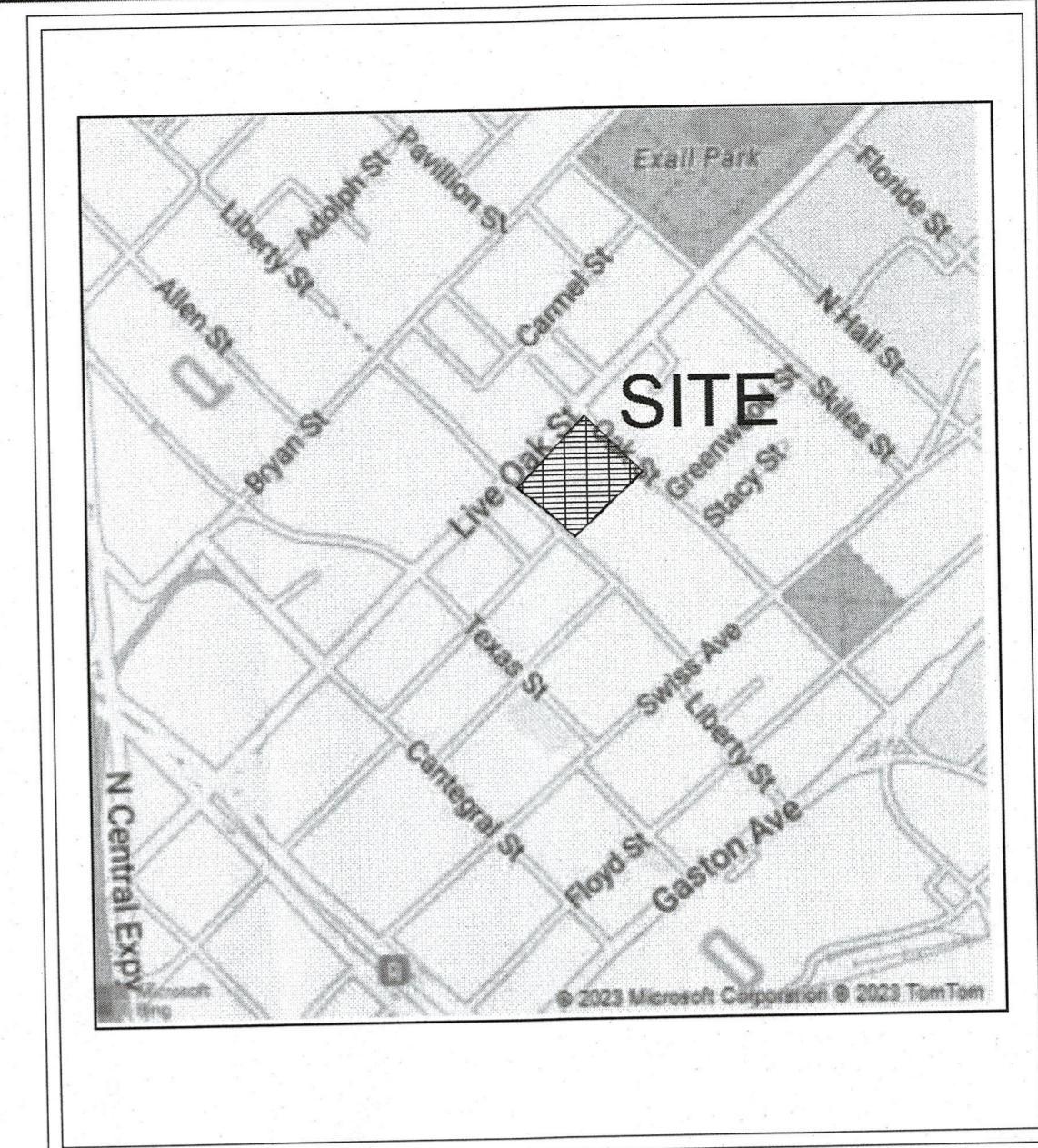
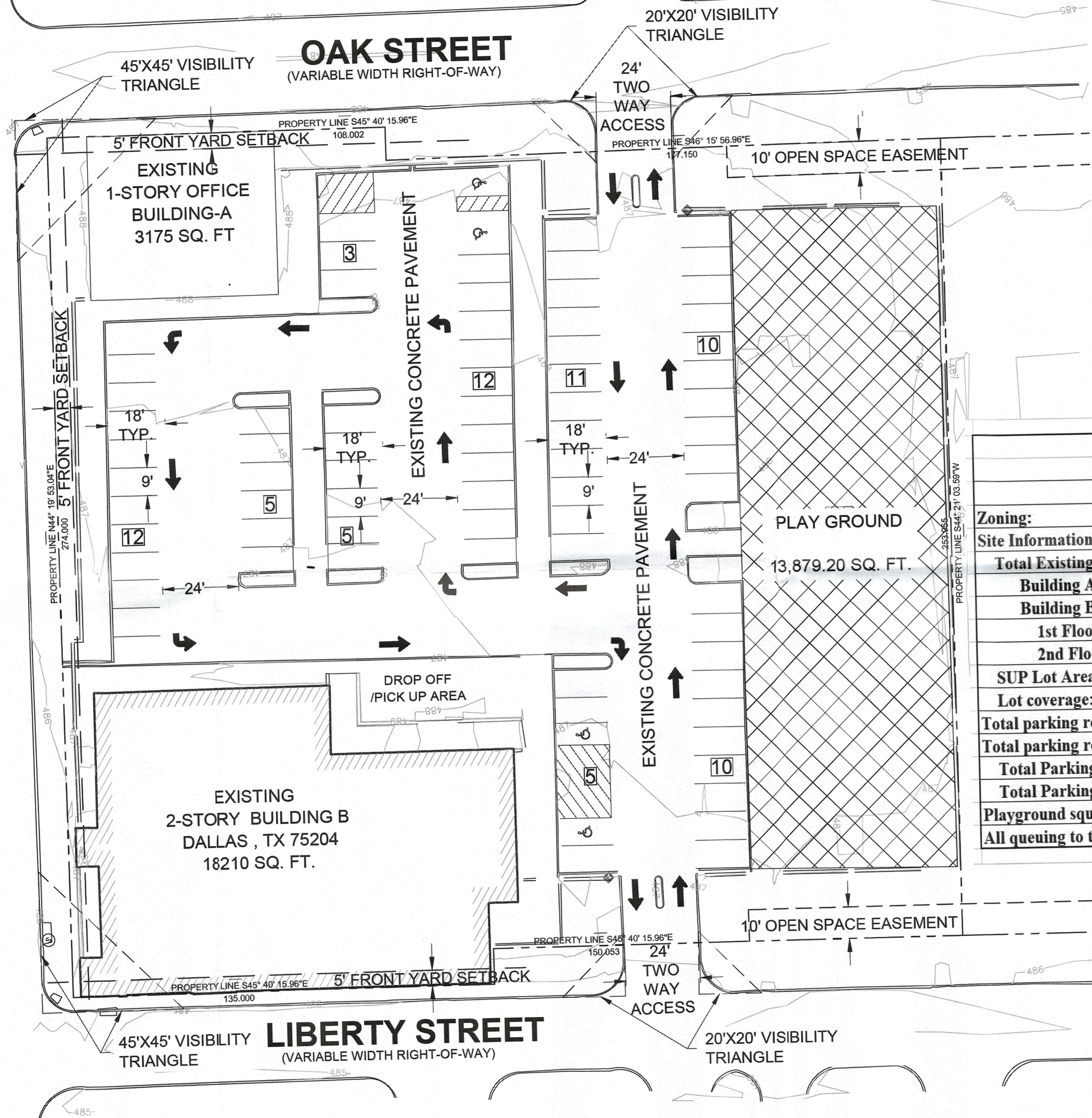


**LIVE OAK STREET**  
(VARIABLE WIDTH RIGHT-OF-WAY)



<b>Specific Use Permit:</b> Child Care Facility	
<b>Zoning:</b>	PDD 298, Subdistrict 10/Tract 1
<b>Site Information:</b>	
Total Existing Building Square Footage	21,385
Building A Square Footage (Office)	3,175
Building B Square Footage	18,210
1st Floor - Child Care Square Footage	11,372
2nd Floor - Office Square Footage	6,838
SUP Lot Area (SF):	74,709
Lot coverage:	19%
Total parking required for the child care facility (1:500 sf)	23
Total parking required for the office (1:366)	27
Total Parking Required	50
Total Parking Provided	73
Playground square footage	13,879
All queuing to take place on-site	

DATE 11/09/2023

MOMMIES IN NEED

Annie's Place  
2904 Floyd Street,  
Dallas, Texas 75021  
310-927-9337



**Child Care Facility**  
**2900 Live Oak Street,**  
**DALLAS, TEXAS**

2234-128

**1 SUP SITE PLAN**  
SCALE: 1" = 20'-0"

