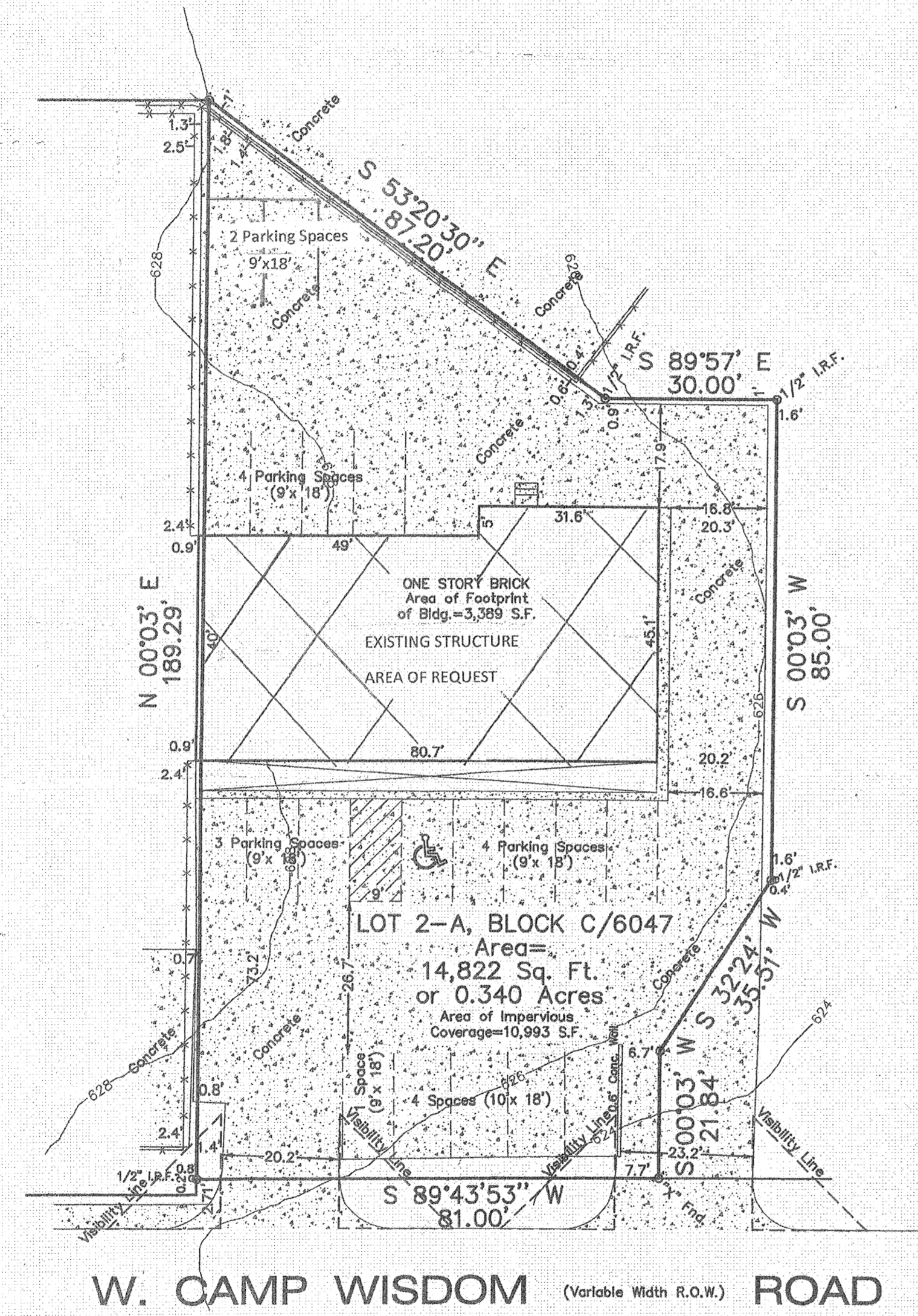
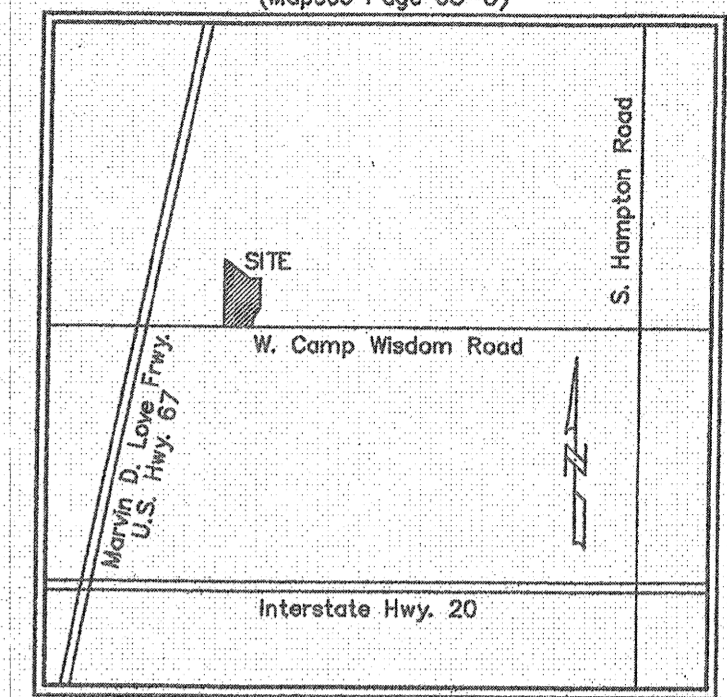
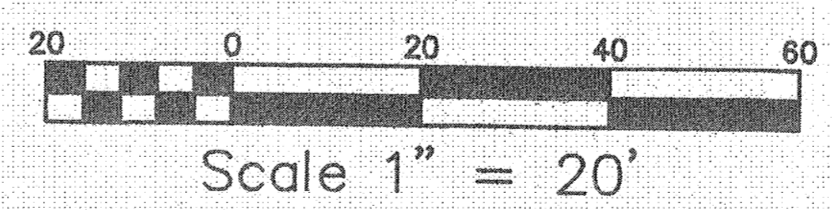
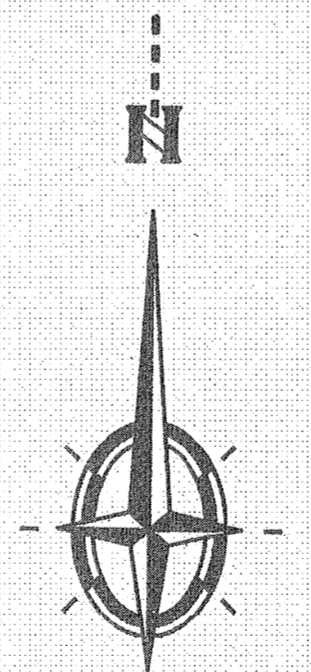


VICINITY MAP
(Not to Scale)
(Mapsc Page 63-U)



SITE SUMMARY

- ZONING: RR-D
- REQUEST: RR - D1 with SUP for alcoholic beverage sales in conjunction with general merchandise or food store less than 3500 square feet.
- PROPOSED USE: general merchandise or food store less than 3500 square feet.
- LOT AREA: 14,822 square feet
- AREA OF REQUEST: 3389 S.F.
- LOT COVERAGE: 22%
- EXISTING HEIGHT: 18 feet
- REQUIRED PARKING: 17
- PROVIDED PARKING: 17



Z178-263
SITE PLAN