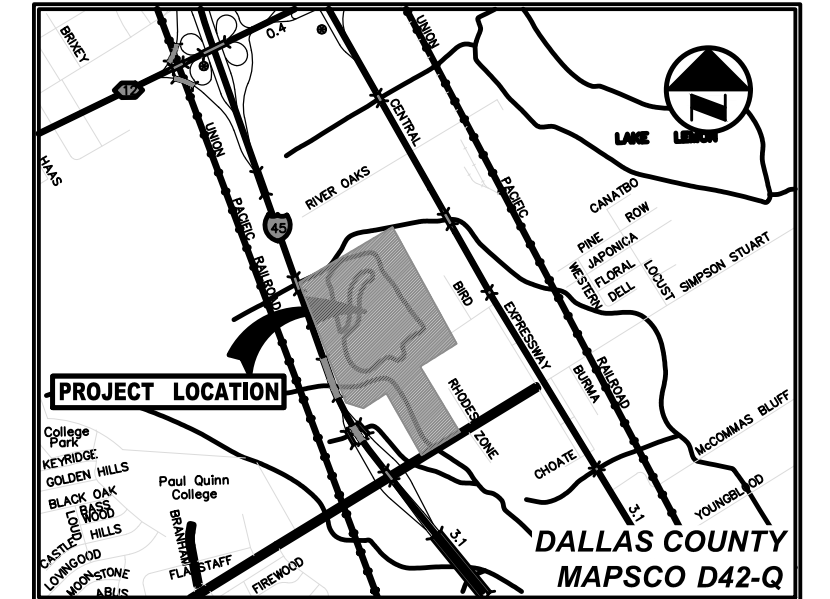


**LEGEND**

- BL BOLLARD
- EM ELECTRIC METER
- PP POWER POLE
- LS LIGHT STANDARD
- WM WATER METER
- WV WATER VALVE
- ICV IRRIGATION CONTROL VALVE
- FH FIRE HYDRANT
- CL CLEANOUT
- MH MANHOLE
- TSF TRAFFIC SIGNAL CONTROL
- TSFP TRAFFIC SIGNAL POLE
- TB TELEPHONE BOX
- FL FLOOD LIGHT
- FP FLAG POLE
- TS TRAFFIC SIGN
- SR 1/2-INCH IRON ROD
- IRS W/PACHECO KOCH" CAP SET
- (C.M.) CONTROLLING MONUMENT
- PROPERTY LINE
- FENCE
- OHL OVERHEAD UTILITY LINE
- 613 EXIST SPOT TOUR
- 612.39 EXIST SPOT ELEVATION
- 612.39 EXIST TOP OF CURB ELEVATION
- 612.39 EXIST GUTTER ELEVATION
- 612.39 EXIST 100-YR FLOODPLAIN LIMITS
- ▨ CROP PRODUCTION AREA



**VICINITY MAP**  
(NOT TO SCALE)

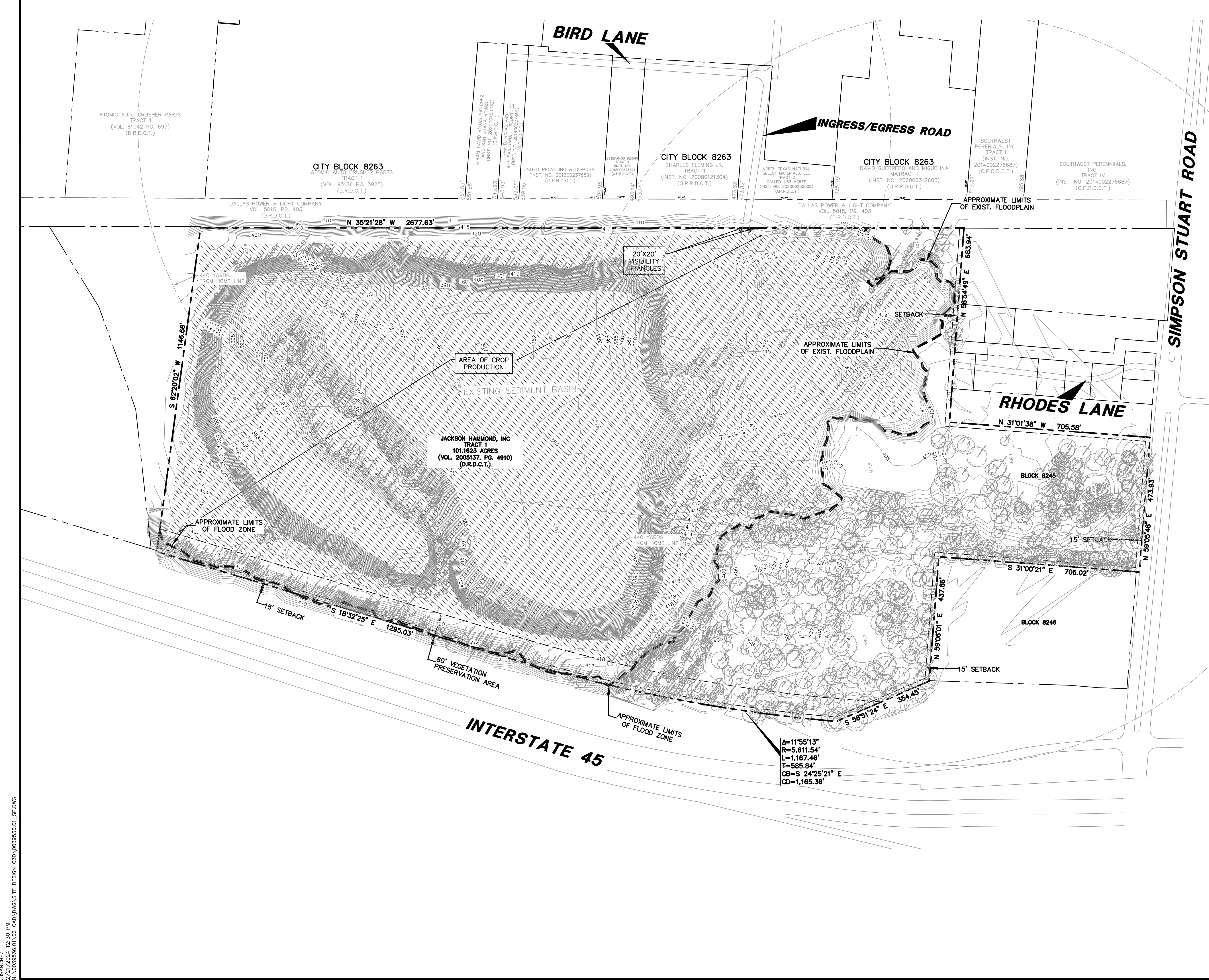
1. CURRENT ZONING: PD 778
2. PROPOSED USE: CROP PRODUCTION

NOTES:  
 - THERE ARE NO EXISTING STRUCTURES ON SITE.  
 - NO PARKING IS PROPOSED.

REVISIONS				
REV NO.	DATE	DESCRIPTION	BY	

<b>Westwood</b>		7557 RAMBLER ROAD, SUITE 1400 DALLAS, TX 75231 T: 972.235.3031		
		TBPELS ENGINEERING FIRM NO. 11756 TBPELS SURVEYING FIRM NO. 10074301		
PLAT NO.	BLDG PERMIT NO.	SDC ENGINEERING	TRACKING NOS.	
SXXX-XXX	YYYYMMDDXXXX	WW18-XXXX	DP18-XXXX	
<b>DEVELOPMENT PLAN</b>				
<b>JULIUS SCHEPPS SITE</b>				
<b>8800 JULIUS SCHEPPS</b>				
<b>CASE NO. D234-004</b>				
<b>CITY OF DALLAS, DALLAS COUNTY, TEXAS</b>				
DESIGN	DRAWN	DATE	SCALE	FILE
AJC	WJH	FEB 2024	1"=150'	XXXX-XXXX
				<b>SHEET</b>
				<b>C1.1</b>



J.SANCHEZ  
 2/21/2024 12:30 PM  
 N:\0039536.01\06 CAD\DWG\SITE DESIGN\C3D\0039536.01\_SP.DWG

JULIUS SCHEPPS