

CITY PLAN COMMISSION**THURSDAY, OCTOBER 9, 2025****RECORD NO.:** Plat-25-000085 (S245-240)**SENIOR PLANNER:** Sharmila Shrestha**LOCATION:** between Lemmon Avenue and Parkside Drive, north of Lovers Lane**DATE FILED:** September 12, 2025**ZONING:** LO-1**CITY COUNCIL DISTRICT:** 13**SIZE OF REQUEST:** 3.213-acres**APPLICANT/OWNER:** Lovers Office Land, LLC

REQUEST: An application to create one 1.151-acre lot from a tract of land containing all of Lot 1, parts of Lots 2, 10, and 11, and all of Lots 12 through 14 in City Block D/5060 on property located between Lemmon Avenue and Parkside Drive, north of Lovers Lane.

SUBDIVISION HISTORY: There has been no recent platting activity within close proximity to this request.

STAFF RECOMMENDATION: The request complies with the requirements of the LO-1 Light Office District; therefore, staff recommend approval of the request subject to compliance with the following conditions:

General Conditions:

1. The final plat must conform to all requirements of the Dallas Development Code, Texas Local Government Code, Texas Land Surveying Practices Act and the General Rules and Regulations of the Texas Board of Land Surveying.
2. Department of Development Services, Engineering Division must verify that the plat conforms with the water, wastewater, and easement requirements under the provisions of Chapter 49 of the Dallas City Code.
3. Compliance with all plans, contracts, ordinances, and requirements of the City of Dallas. *Section 51A-8.102(a), (b), (c), and (d)*
4. The number and location of fire hydrants must comply with the Dallas Fire Code.
5. Any new or existing structure may not extend across new property lines. *Section 51A-8.503(e)*
6. On the final plat, all easement abandonments, and ROW abandonments must be by separate instrument with the recording information shown on the face of the plat. A release from the Real Estate Division is required prior to the plat being submitted to the Chairman for signature.
7. On the final plat, include two boundary corners tagged with these coordinates: "Texas State Plane Coordinate System, North Central Zone, North American Datum of 1983 on Grid Coordinate values, No Scale and no Projection."
8. On the final plat, monument all set corners per the Monumentation Ordinance. Prior to submitting the final plat for the Chairman's signature. The monuments

must be verified by the Chief City Surveyors Office in the Public Works Department. *Section 51A-8.617*

9. Provide ALL supporting documentation (i.e. deeds, plats, ordinances, easements...etc) with a completed Final Plat Checklist to the Survey Plat Review Group (**SPRG**) with the Final Plat Submittal **after** City Plan Commission Approval.
10. Prior to the final plat, submit a tree survey to the Arborist. A release from the arborist is required prior to an early release request or the recordation of the plat, whichever occurs first.
11. The number of lots permitted by this plat is one.

Paving & Drainage Conditions:

12. Submit a full set of Civil Engineering Plans (drainage, paving, street signage/marketing/lighting) prepared per City Standards by a licensed (TX) Professional Engineer to Engineering Division in Room 200, Oak Cliff Municipal Center (i.e. 311T/DP). Additions and alterations to the public infrastructure require approval and may require private development contracts with bonds. 51A-8.102 (c); 8.601(b)(4),(5),(6),(7),(8),(9)
13. Detention may be required if the capacity of available outfall is not adequate to carry the developed runoff. Section 51A-8.611(c).
14. Place a note on the final plat stating "Lot-to-Lot drainage will not be allowed without proper City of Dallas Engineering Division approval" 51A 8.611(e)

Right-of way Requirements Conditions:

15. On the final plat, dedicate 45 feet of right-of-way (via fee simple) from the established center line of Lovers Lane. Section 51A 8.602(c).
16. On the final plat, dedicate a minimum 20-foot by 20-foot corner clip (via fee simple or street easement) at Lovers Lane and Lemmon Avenue. Section 51A 8.602(d)(1).
17. A larger corner clip may be requested during engineering plan and traffic review to accommodate an adequate turning radius, or to maintain public/traffic appurtenances, within the area of the corner clip. 51A 8.602(d)(1), 51A 8.608(a)
18. Must coordinate with Transportation Department for any traffic signal requirements that are deemed necessary for improving pedestrian accessibility and safety related to site development (Contact Srinivasa Veeramallu with Traffic Signals). 51A-8.606, 51A-8.608
19. Must coordinate with the City of Dallas Park and Recreation Department.

Survey (SPRG) Conditions:

20. Submit a completed Final Plat Checklist and All Supporting Documentation.
21. Show recording information on all existing easements within 150 feet of property.
22. All utility easement abandonments must be shown with recording information.

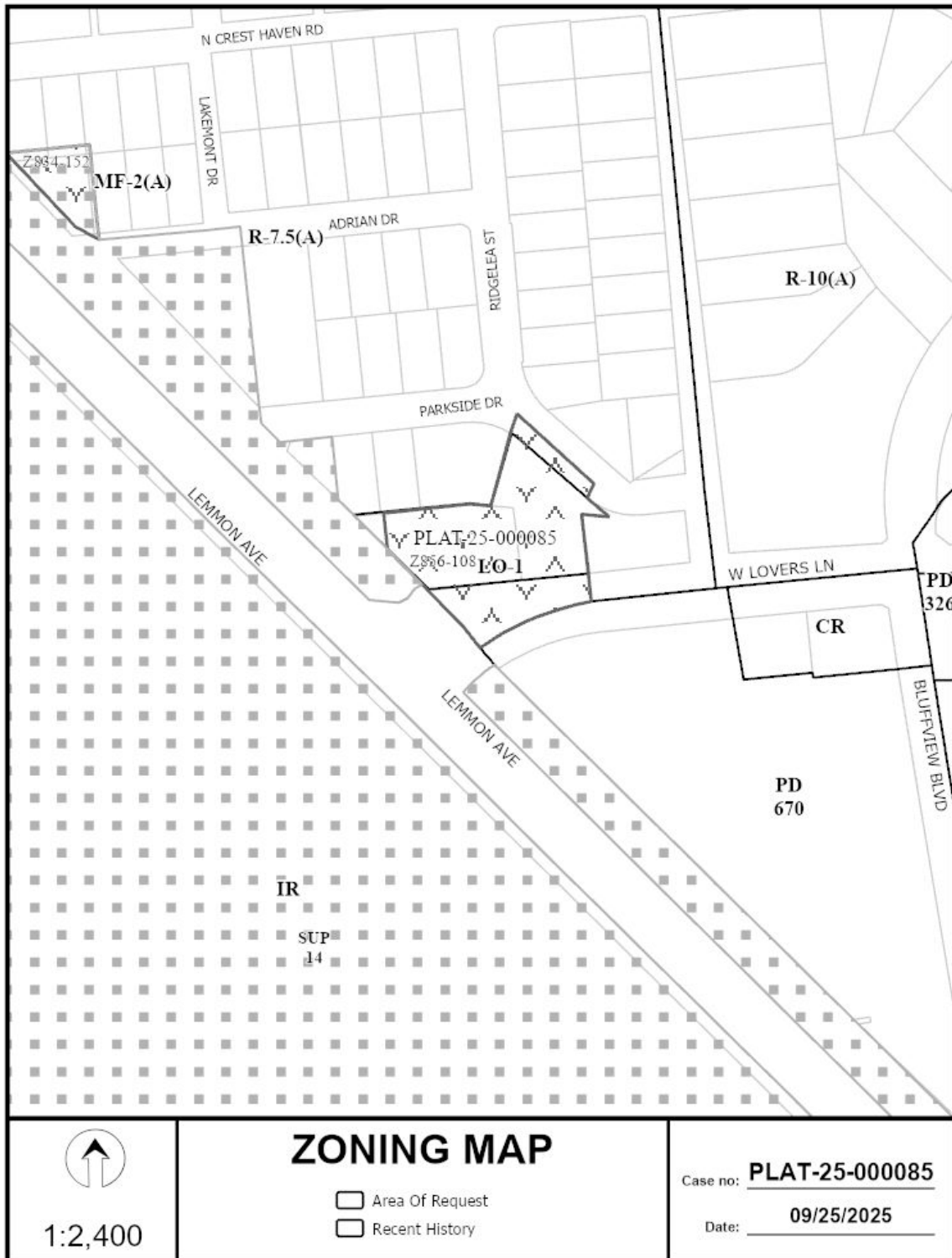
23. Show all additions or tracts of land within 150 feet of property with recording information.

Dallas Water Utilities Conditions:

24. Additional design information is required for assessment. Site plan must be submitted showing proposed development, building finished floor elevation, development, existing mains – including downstream manhole, and proposed water and wastewater service locations. Submit water/wastewater engineering plans to 320 E. Jefferson Blvd., Room 200, Attention: Water and Wastewater Engineering.
25. Water and wastewater main improvements may be required by Private Development Contract. Submit water/wastewater Engineering Plans to 320 E. Jefferson Blvd., Room 200, Attention: Water and Wastewater Engineering.

Street Light/ GIS, Lot & Block Conditions:

26. Additional design information needed to complete review. Provide a brief description of the proposed project and a copy of the site plan to daniel.silva1@dallas.gov to determine street lighting requirements.
27. On the final plat, identify the property as Lot 1A in City Block D/5060.





1:2,400

AERIAL MAP

- ☐ Area Of Request
- ☐ Recent History

Case no: **PLAT-25-000085**

Date: **09/25/2025**

