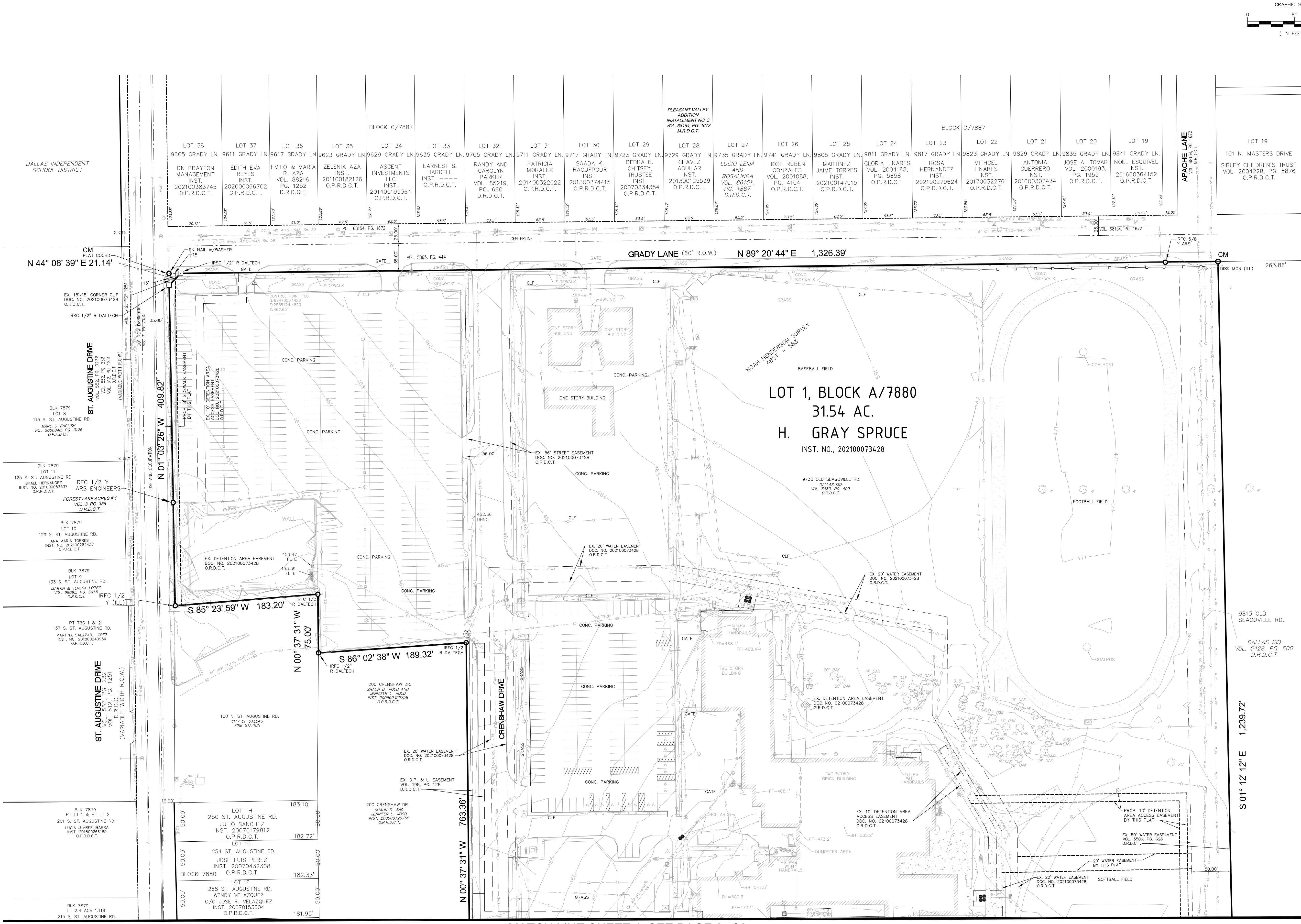


VICINITY MAP
(NOT TO SCALE)

SYMBOLOLOGY/LEGEND

—CATV—	CABLE TV		CEDAR TREE
—OUP—	OVERHEAD POWER LINE		CREPE MYRTLE
—W—	WATER LINE		CYPRESS TREE
—SS—	SANITARY SEWER LINE		ELM TREE
—SD—	STORM DRAIN		HOLLY
—G—	GAS LINE		OAK TREE
—UE—	ELECTRIC LINE		PECAN TREE
—FO—	FIBER OPTIC LINE		IRRIGATION CONTROL VALVE
—T—	TELEPHONE LINE		WATER VALVE
—	CHAINLINK FENCE		WATER METER
	CLEANOUT		ELECTRIC METER
	DRAINAGE/STORM MANHOLE		ELECTRIC BOX
	ELECTRIC MANHOLE		TELEPHONE BOX
	GAS MANHOLE		GAS METER
	SANITARY SEWER MANHOLE		FIRE HYDRANT
	TELEPHONE MANHOLE		
	GREASE TRAP		
	MONITORING WELL		
	LANDSCAPE LIGHT		
	BOLLARD		
	GUY ANCHOR		
	UTILITY POLE		
	SIGN		
	LIGHT POLE		
	SET 1/2" IRON ROD W/ CAP		
	FOUND IRON ROD		

IRFC 1/2" R DALTECH = IRON ROD FOUND WITH RED CAP STAMPED DAL-TECH
 C.M. = CONTROL MONUMENT
 LL = LEGIBLE
 VOL. = VOLUME
 PG. = PAGE
 SQ.FT. = SQUARE FEET
 ESMT. = EASEMENT
 INST. NO. = INSTRUMENT NUMBER
 POB = POINT OF BEGINNING
 (D.R.D.C.T.) = DEED RECORDS, DALLAS COUNTY, TEXAS
 (M.R.D.C.T.) = MAP RECORDS, DALLAS COUNTY, TEXAS
 (G.P.R.D.C.T.) = OFFICIAL PUBLIC RECORDS, DALLAS COUNTY, TEXAS
 (MNS) = MAGNET NAIL SET



MATCH LINE SHEET 1, SEE PAGE 2 of 2

- GENERAL NOTES:**
- All bearings shown are based on the Texas Coordinate System of 1983, North Central Zone (4202), North American Datum of 1983, (2011).
 - Lot to lot drainage will not be allowed without engineering section approval.
 - The coordinates shown hereon are Texas State Plane Coordinate System, North Central Zone (4202), North American Datum of 1983 grid coordinate values.
 - The purpose of this plat is to revise utility easements. The buildings remain the same.

PRELIMINARY PLAT STATEMENT

PRELIMINARY, THIS DOCUMENT SHALL NOT BE RECORDED FOR ANY PURPOSE AND SHALL NOT BE USED OR VIEWED OR RELIED UPON AS A FINAL SURVEY DOCUMENT.

OWNER
DALLAS INDEPENDENT SCHOOL DISTRICT
9400 N. CENTRAL EXPWY
DALLAS, TX 75231

SURVEYOR
DAL-TECH ENGINEERING
17400 DALLAS PARKWAY, SUITE 110
DALLAS, TEXAS 75248
(972) 250-2727
TBPELS FIRM NO. 101235-11

DAL-TECH ENGINEERING, INC.
17400 DALLAS PKWY., SUITE 110
DALLAS, TEXAS 75248
TEL: (972) 250-2727
TEXAS SURVEYING FIRM NO. 10123500

PRELIMINARY PLAT
H. GRAY SPRUCE
LOT 1, BLOCK A/7880
31.54 ACRES

A REPLAT OF LOT 1, BLOCK A/7880
H. GRAY SPRUCE
NOAH HENDERSON SURVEY, ABSTRACT NO. 583
CITY OF DALLAS, DALLAS COUNTY, TEXAS
CITY PLAN FILE NO. S234-156