

31430

Site Plan

200162

2234-155

Site Summary

Existing Zoning: LI with D-1 Overlay

Request: SUP for off premise alcohol consumption associated with a general merchandise or food store less than 3500 square feet.

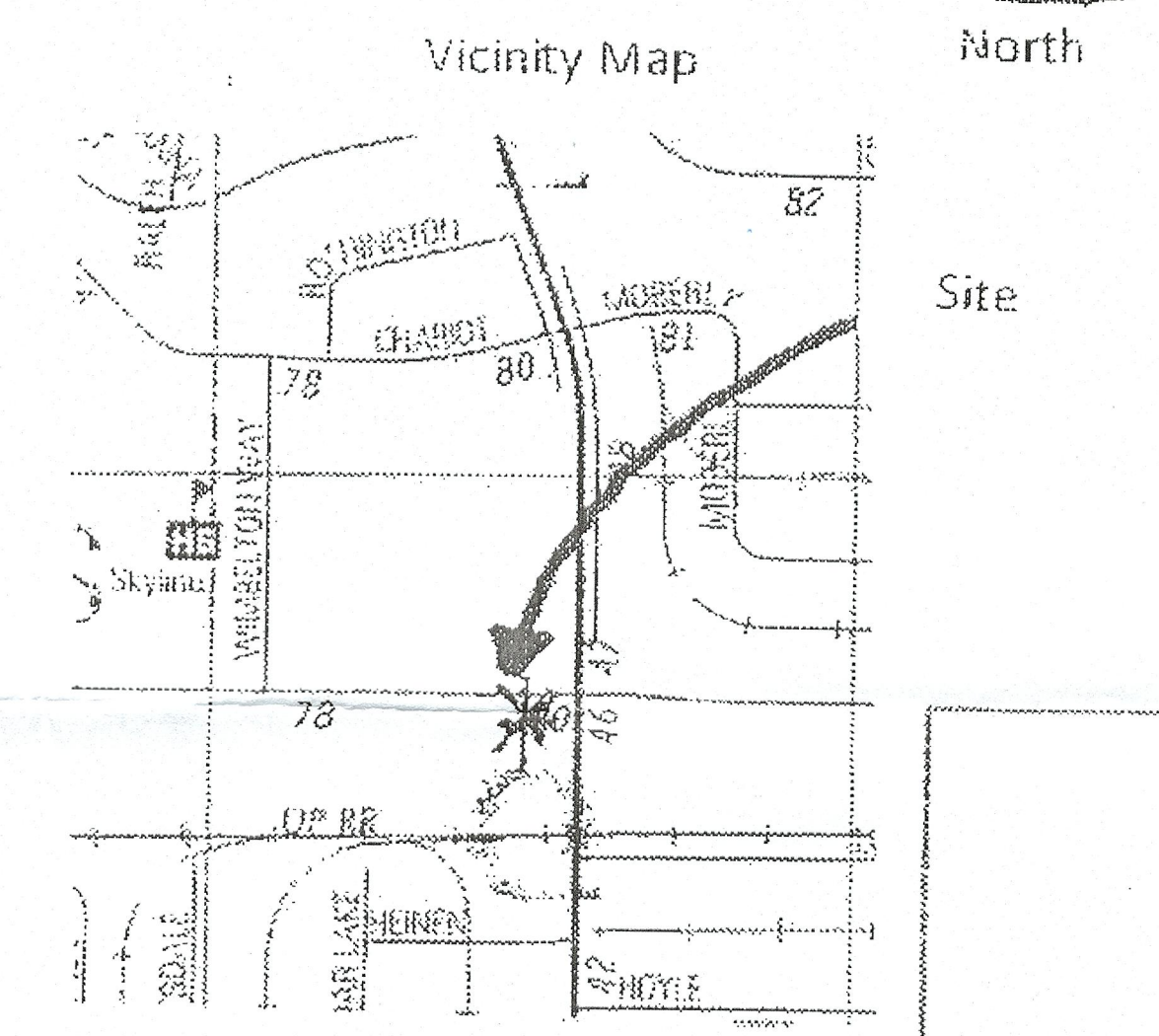
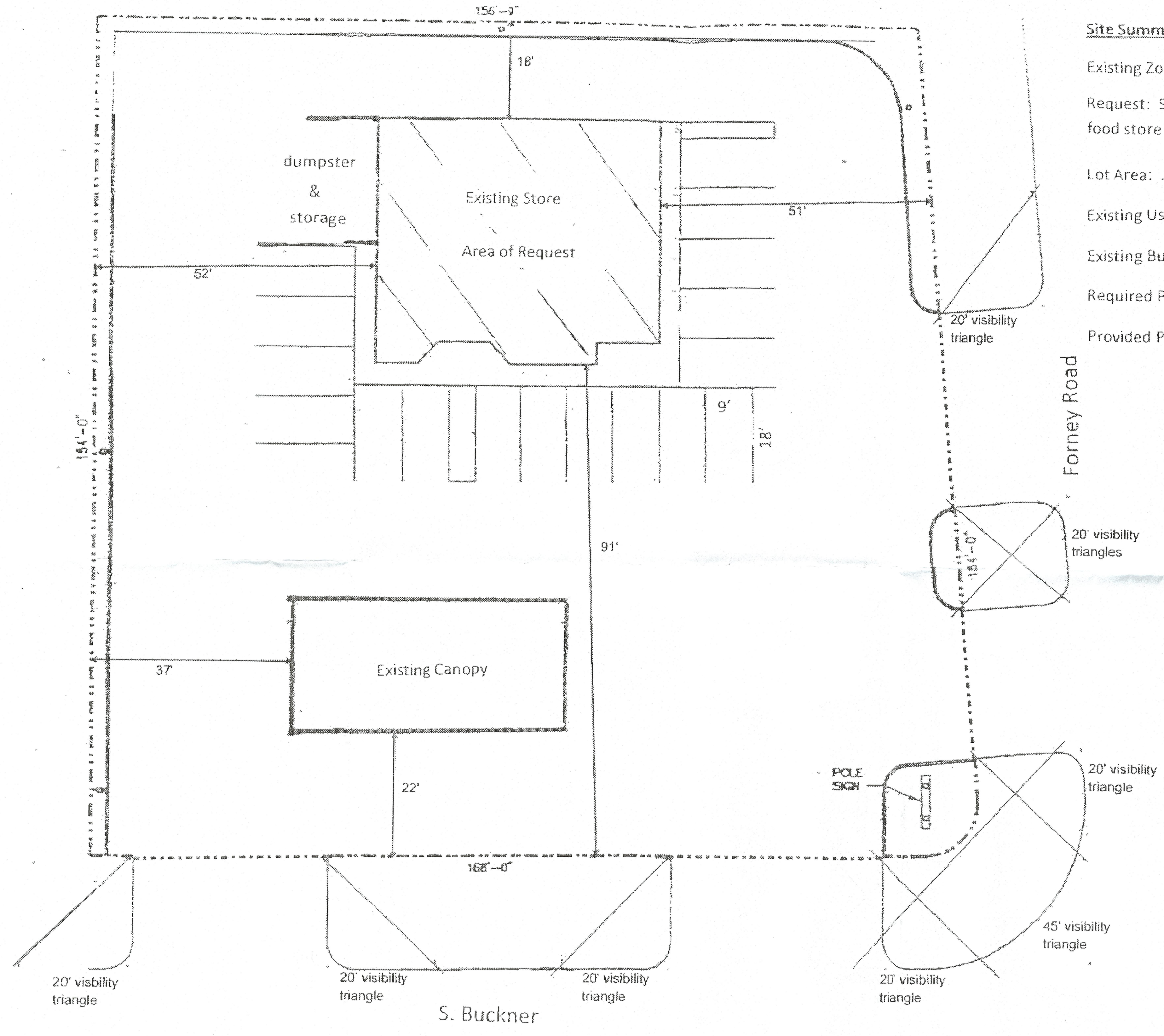
Lot Area: .616 acres

Existing Use: General merchandise or food store less than 3500 square feet

Existing Building Area: 2400 square feet

Required Parking: 14

Provided Parking: 17



Specific Use Permit
No. 2359

Approved
City Plan Commission
November 21, 2019

Scale: 1" = 20'

Z 189-217