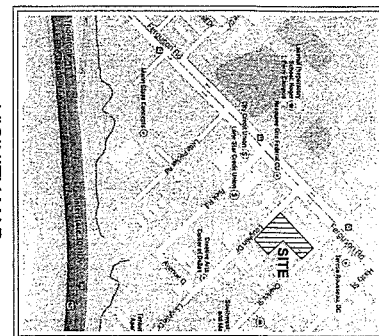
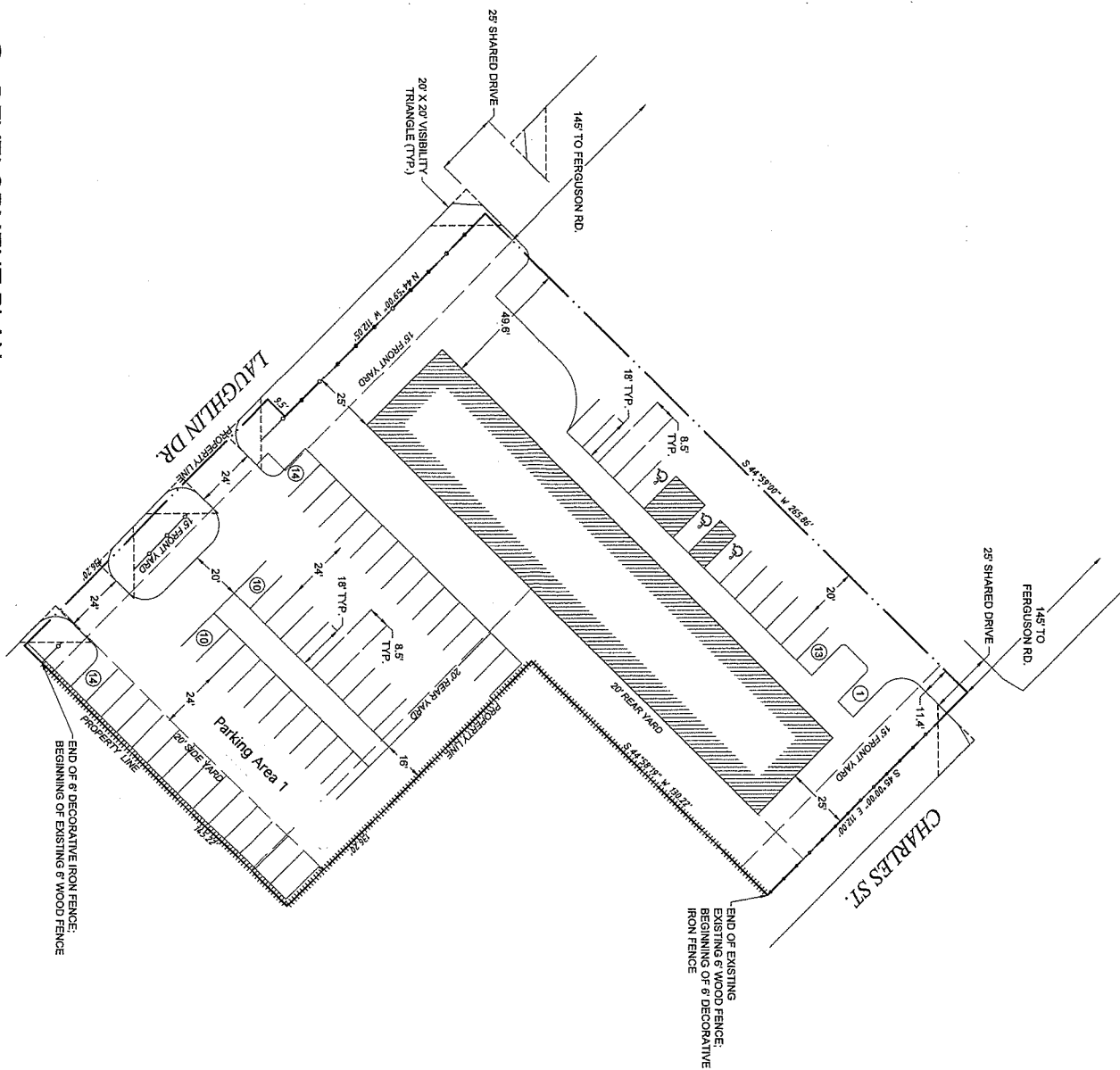




DEVELOPMENT PLAN
SCALE: 1" = 20'-0"



VICINITY MAP
NTS

SITE INFORMATION

SITE AREA: 49,485.48 SQ. FT. (1,136 AC)
 USE: GROUP RESIDENTIAL FACILITY
 FLOOR AREA: 20,496 SQ. FT. (WITH 300 SQ. FT. OFFICE)
 NUMBER OF BEDS: 100 BEDS
 HEIGHT: 45' MAX.
 STORIES: 3
 LOT COVERAGE: 18%
 REQ. PARKING (0.25 spaces/bed + 1 space/200 sq. ft. of office area): 27 SPACES
 PROVIDED PARKING: 62 SPACES

Approved
 City Plan Commission
 August 7, 2014

CASE NUMBER: Z134-233 (RB)

7626 FERGUSON RD. & 2331 LAUGHLIN DR.
 CITY OF DALLAS, TEXAS

Baldwin
 Associates

BALDWIN ASSOCIATES
 3904 Elm Street, Suite B
 Dallas, Texas 75226
 MOBILE: 214.729.7949
 OFFICE: 214.824.7949
 rob@baldwinplanning.com

06/26/14
 PROJECT NUMBER
 CASE NUMBER

Development Plan
 Exhibit 924A
 Planned Development No. 924