



City of Dallas

Data Analytics and Business Intelligence

**Government Performance &
Financial Management
May 21, 2024**

Dr. Brita Andercheck, Director
Dr. Malini Banerjee, Assistant Director
Data Analytics and Business Intelligence

Purpose



- Provide an overview of the Department of Data Analytics & Business Intelligence
- Highlight department program, services, and activities

- *Briefing reflects FY 2024-25 Planned Budget as developed Summer 2023*
- *The starting point of every Budget Development process (February – September) is the Planned Budget from prior year*
- *Revenue and expenditure assumptions will change prior to CMO recommendation on August 13, 2024*

Role of the Department / Fact Sheet



Mission

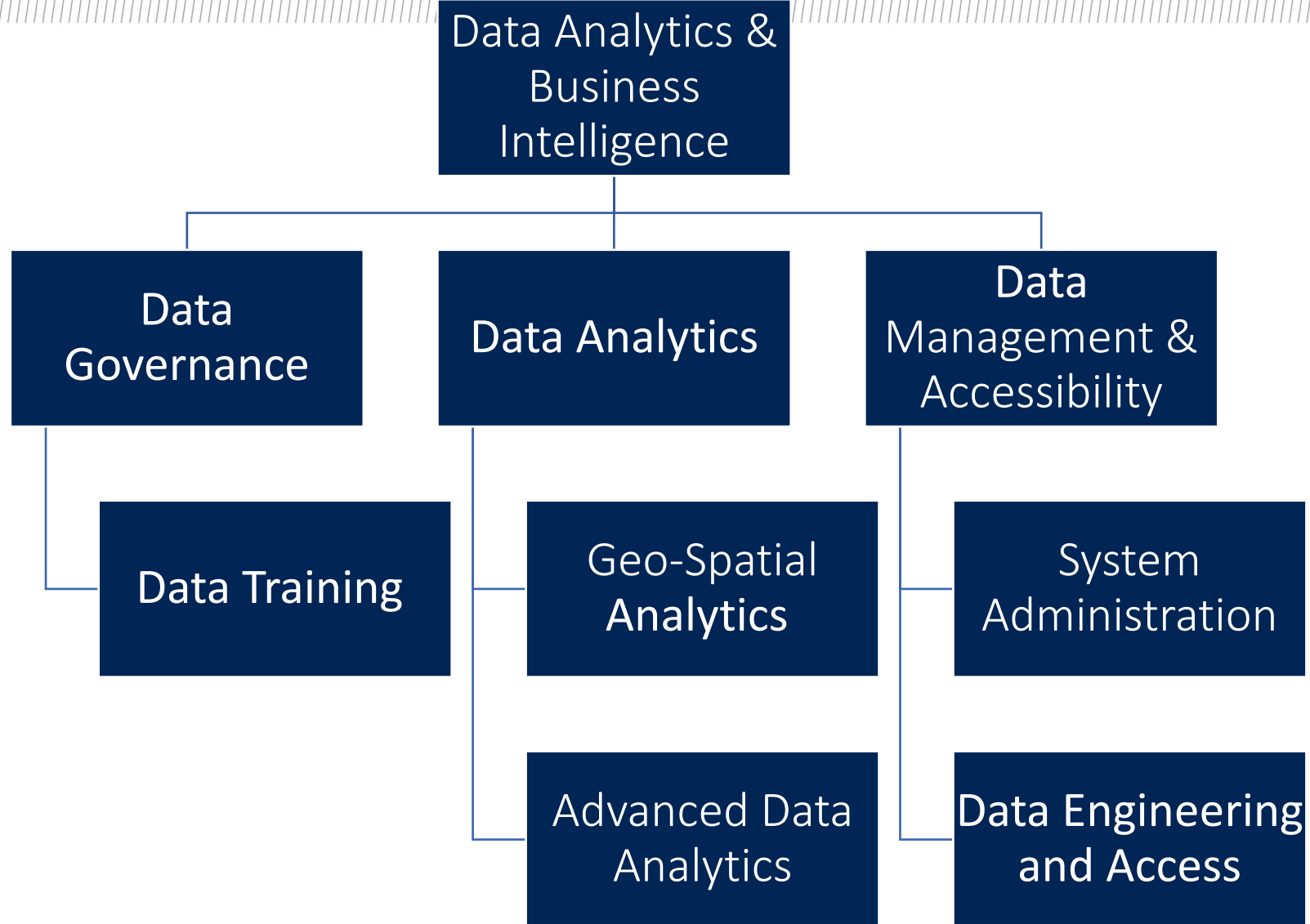
- Use data to improve the lives of the people of Dallas.

Department Goals

- Define and lead Data Governance through education and oversight to empower effective data driven decisions.
- Enhance Data Accessibility so that city staff and the public can have access to the resources they need to gain insight into core city services.
- Develop and nurture a Team that can deliver all aspects of high-quality data products and initiatives.
- Cultivate and invest in a strong Data Culture in the City of Dallas to expand learner access, understand, visualize, and speak data.
- Research, scope, design, execute and publish high impact Data Projects that serve the City of Dallas.



Organizational Chart



Total Budget – All Funds



Service	FY 2023-24 Budget	FY 2024-25 Planned
General Fund	\$6,108,162	\$6,261,948
Grant Funds	0	0
Trust & Other Funds	0	0
Total	\$6,108,162	\$6,261,948



Budget Summary by Service



Service	FY 2022-23 Actual	FY 2023-24 Adopted Budget	FY 2023-24 Forecast*	FY 2024-25 Planned Budget
Data Analytics	\$3,198,963	\$3,745,279	\$3,950,893	\$3,919,319
Data Governance	760,470	1,530,239	1,052,209	1,401,348
Data Management & Accessibility	285,016	832,644	1,105,060	941,280
Expense Total	\$4,244,448	\$6,108,162	\$6,108,162	\$6,261,948

*January 2024 Forecast



Position Overview



Positions	FY 2023-24 Budget	FY 2024-25 Planned	Change
General Fund	45	45	0
Grant, Trust, and Other Funds	0	0	0
Total	45	45	0



Operating Expense and Revenue



Service/Division	FY 2022-23 Actual	FY 2023-24 Adopted Budget	FY 2023-24 Forecast*	FY 2024-25 Planned Budget
Personnel Services	\$3,408,221	\$4,514,834	\$4,514,754	\$4,642,377
Supplies - Materials	266,667	306,599	306,599	306,599
Contractual – Other Services	569,561	1,286,729	1,286,809	1,312,972
Capital Outlay	0	0	0	0
Reimbursements	0	0	0	0
Department Expense Total	\$4,244,448	\$6,108,162	\$6,108,162	\$6,261,948
Department Revenue Total	0	0	0	0

*January 2024 Forecast



Performance Measures



Measure	FY 2022-23 Actual	FY 2023-24 Target	FY 2023-24 Forecast*	FY 2024-25 Target
Percentage of students who successfully complete the Data Academy course	71.2%	75.0%	75.0%	75.0%
Percentage increase in active data software licenses	29.2%	3.0%	5%	3.0%
Percentage increase in DBI data products views	20.1%	3.0%	7.4%	3.0%
Percentage of Spanish translated public facing products	95.2%	95.0%	99%	95.0%
Percentage of major projects with an equity element	90.0%	95.0%	90%	95.0%

*FY 2023-24 – 1Qtr Report





Summary of Services, Programs and Activities

more than Dashboards...



- Descriptive Statistics
- Spatial Statistics
- Advanced Analytics
- Data Modeling
- Machine Learning
- Programming
- GIS Maps and Applications
- Hubsites and StoryMaps
- Training and Innovation Lab
- Data and System Maintenance
- Data Governance and Policy



The Impact of DBI



400+ Million Data Interactions



20+ Million Views of Data Products



\$10 Million Projected Cost Avoidance
~\$1 Million cost avoidance per month



70% of Initial DBI Staff were already City employees



388K+ Data Automated Updates Per Year



1,000 Licenses (Tableau and GIS)

People of DBI



55%
OF DBI
EMPLOYEES
HAVE ADVANCED
DEGREES



75%
OF DBI
EMPLOYEES
ARE PEOPLE OF
COLOR



40%
OF DBI EMPLOYEES
ARE WOMEN, 15%
ABOVE INDUSTRY
AVERAGE.

Accomplishments



Dallas is widely considered to have one of the top Civic Data Analytics Teams in the country.

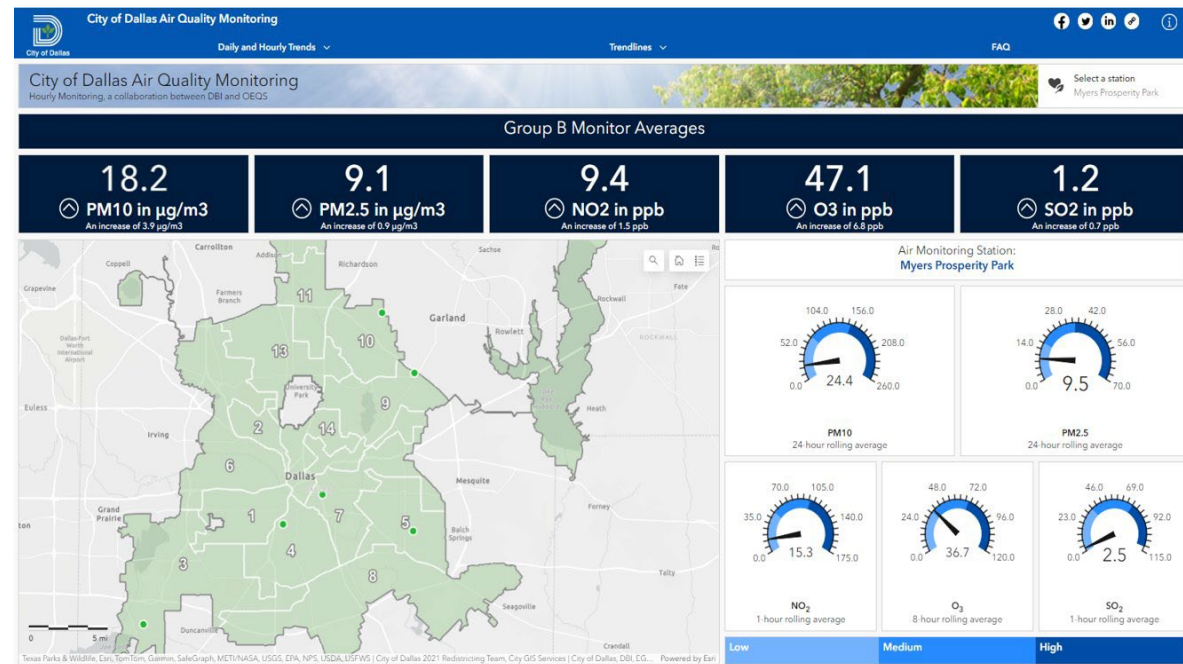
- **One of the top 5** most effective CDO's in the world, Gartner Inc.
- **Leading** Data Executives 2022, CDO Magazine
- **Leading** Data Discussion on Maps, Stats and Equity 2022, Government Technology
- On **creating a robust Data Office in Dallas** to drive efficiency and save money, 2023, Government Technology
- On **problem solving and creating change** with data 2023, D Magazine
- **Participating in White House Science and Tech** data policy working group
- Voted as a **finalist** Smart Cities for 311
- Other cities reaching out: Memphis, Boston, LA, Arlington, Austin, Denton, San Jose, and others, we are setting up a virtual open house in the fall.



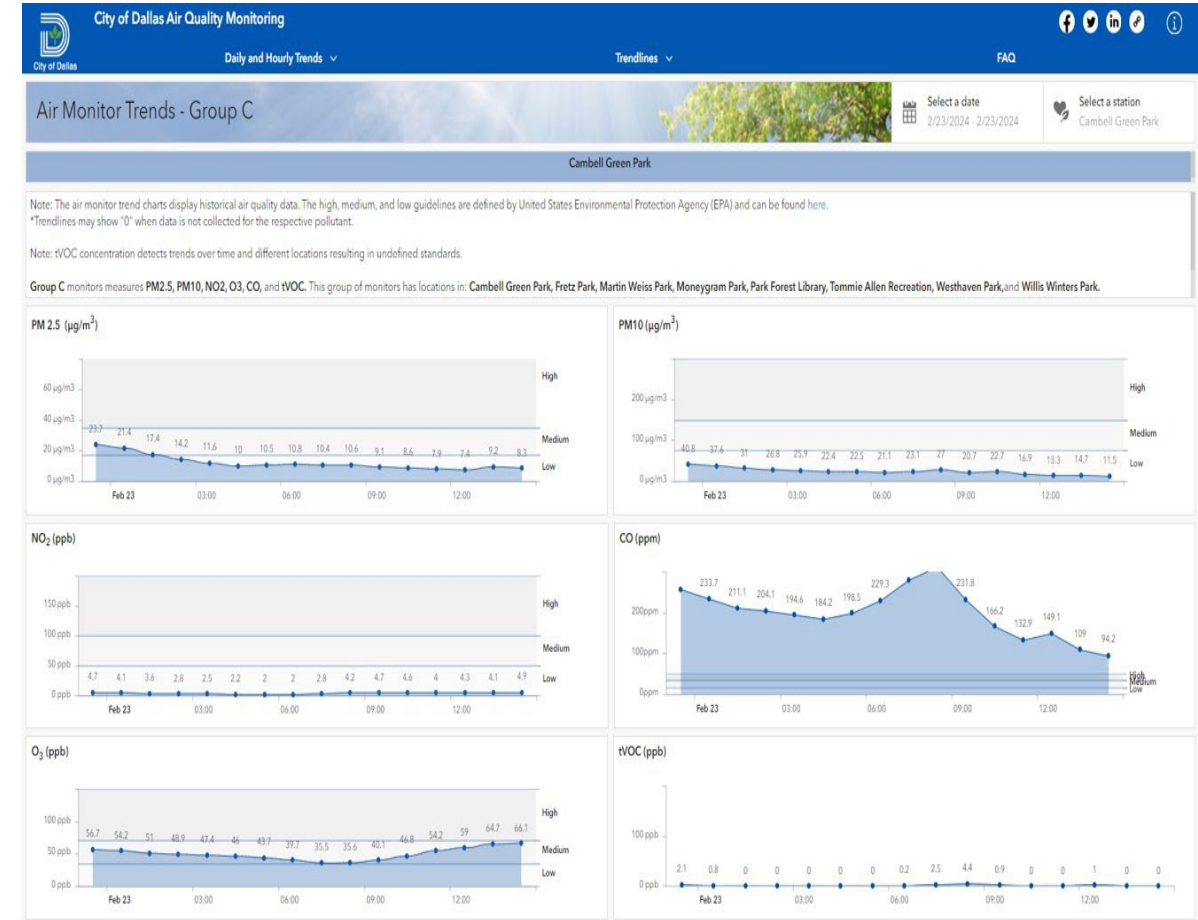
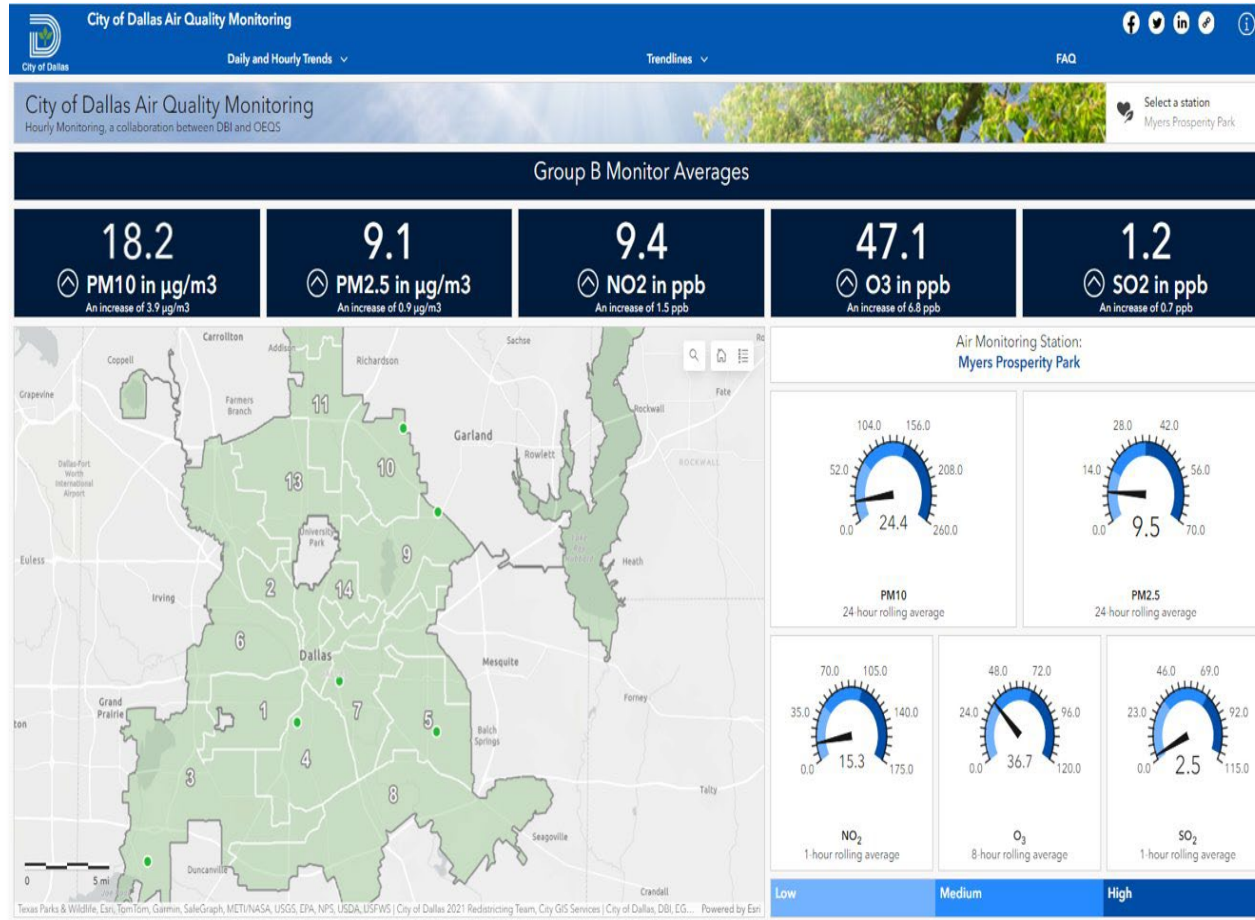
Descriptive Statistics

Air Quality Monitoring Dashboard

Goal: To **deploy** a series of air monitoring station **throughout the city**, **collect data** and **display** for public consumption and decision making.



Air Quality Monitoring Dashboard



Impact



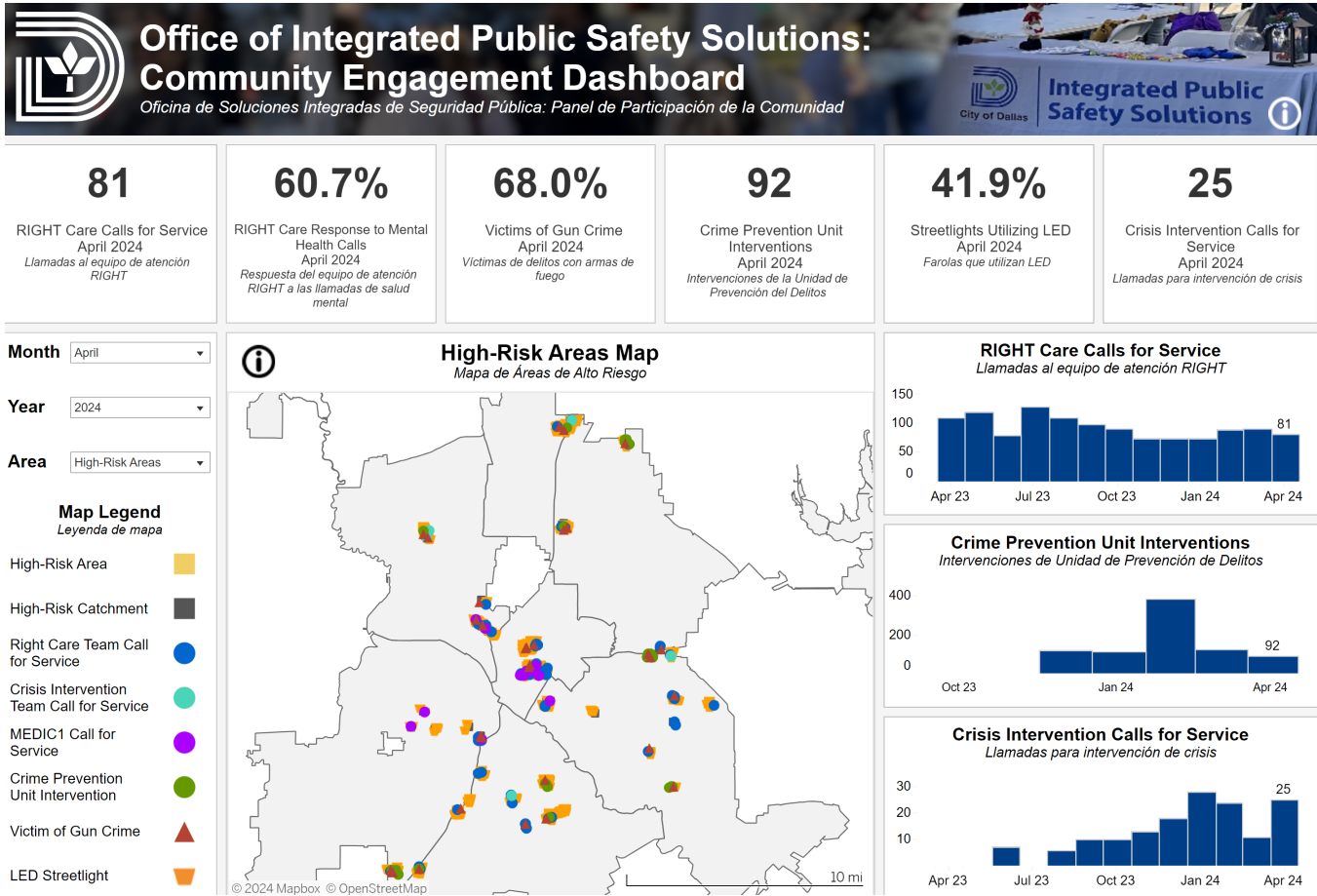
Provide residents with insights into the air quality in their communities.



The data from this program will serve as a foundation for other projects and decision makers.

OIPSS Community Engagement Dashboard

What actions is the City taking to mitigate circumstances that promote criminal behavior?



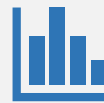
Impact



Allows IPS to monitor progress towards department strategic goals



Provides year over year performance metrics in or around high-risk areas



Provides Dallas residents insights into IPS efforts to mitigate crime through community engagement



Introduces efficiencies by saving over 1000 staff hours across 3 departments

Advanced Analytics



Can we help Dallas
Police detectives
identify high-risk victims
of Human Trafficking?



Impact



Saves Dallas Police time searching through reports, estimated 3 years



Potential to help detectives identify and support more victims



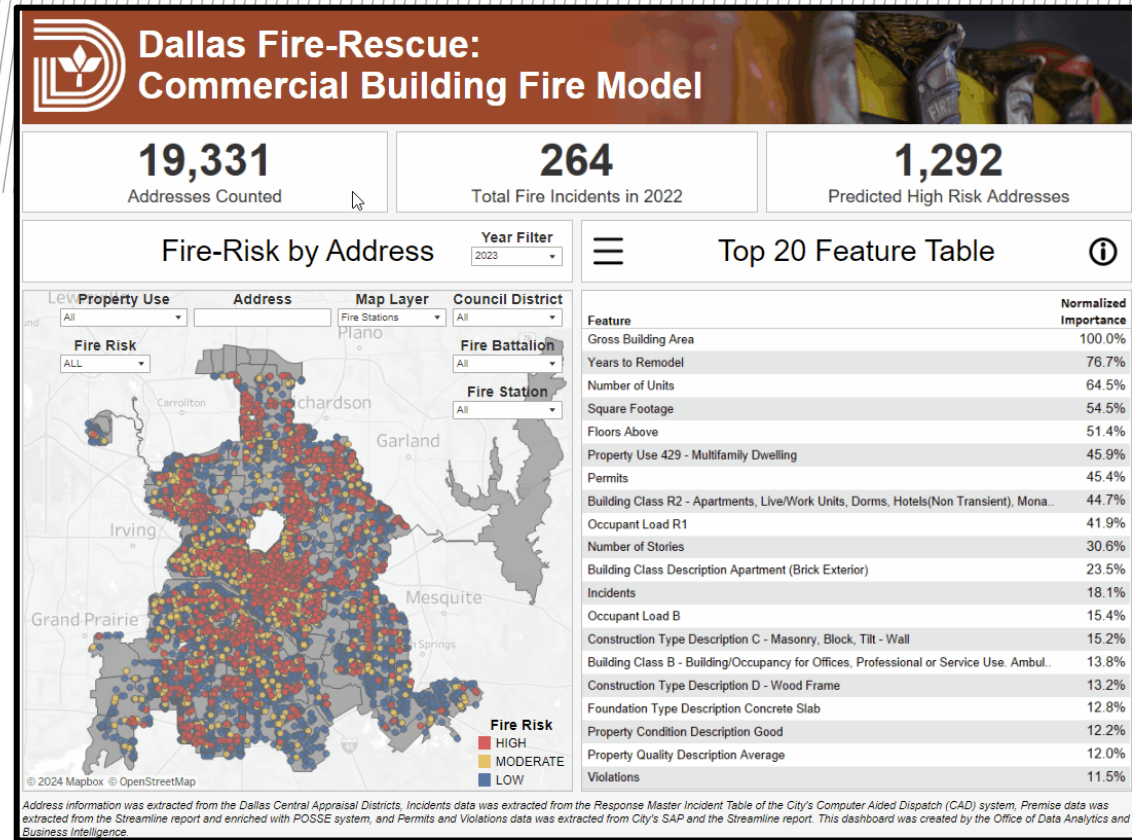
Police report narrative dataset now available for additional analysis beyond human trafficking



Text-mining algorithm available for additional use beyond police report data

Commercial Building Fire Model

- What is the risk of certain commercial properties experiencing a fire and, can we identify property features indicative of fire risk potential?



Impact



Gross building area, years to remodel, and number of units represent the top 3 important variables



Approximately 44% of high and moderate-risk observations represented by multi-family dwellings



Allocation of DFR inspection resources = focus at high and moderate risk structures



Pre-incident planning and integration of project results into Next Generation 911

Spatial Analytics

Fire Station Site Suitability

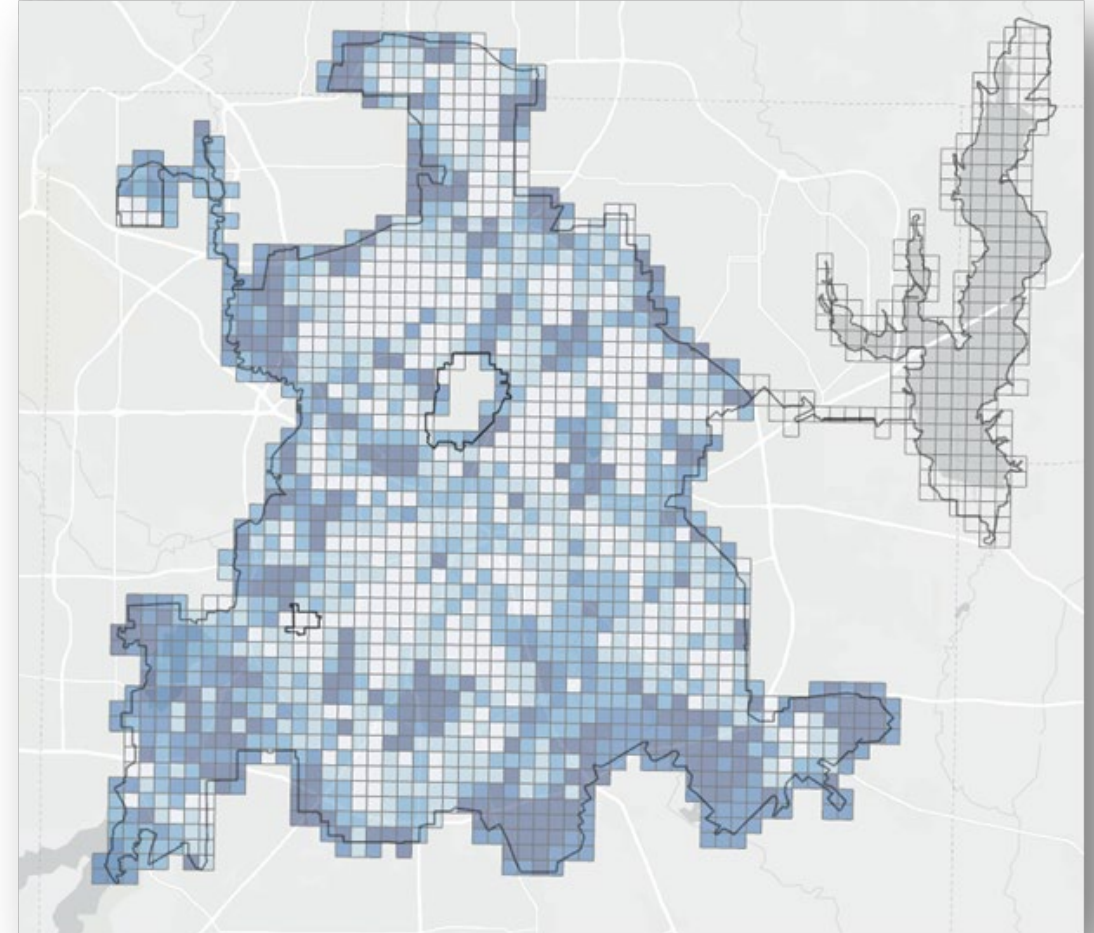
Dallas Fire and Rescue wanted to **identify five locations within Dallas** that would **benefit most from new fire stations**.



Results & Findings: Fire Station Site Suitability



- Based on this analysis Dallas Fire and Rescue was able to identify five areas with the most need for a new fire station.
- Locate city owned properties nearest these locations that were large enough to host a new station.



Impact



The analysis provided Dallas Fire and Rescue leadership with five locations based on the greatest need as demonstrated by the analysis.



The results were presented to the city council to support the need for the new stations.

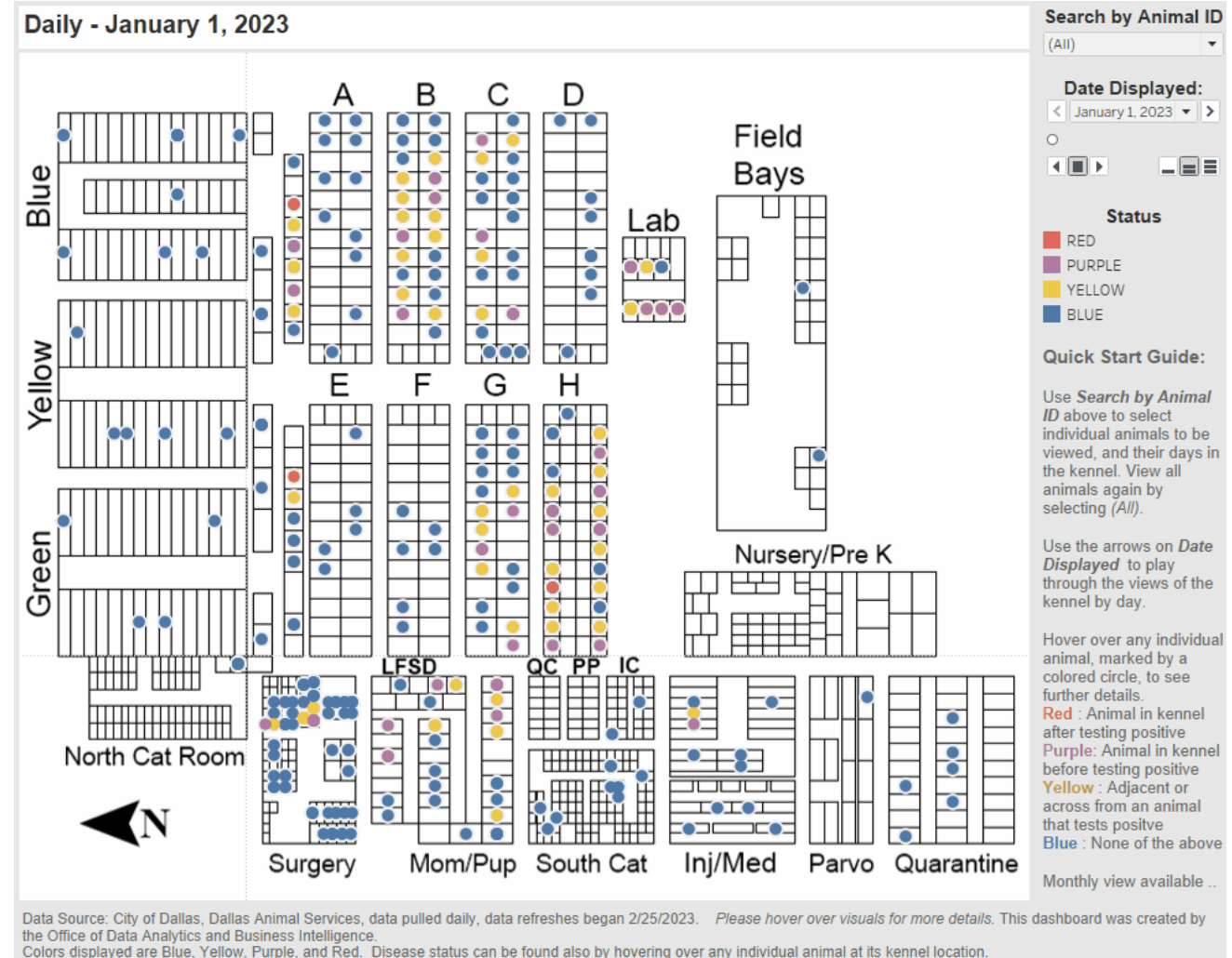
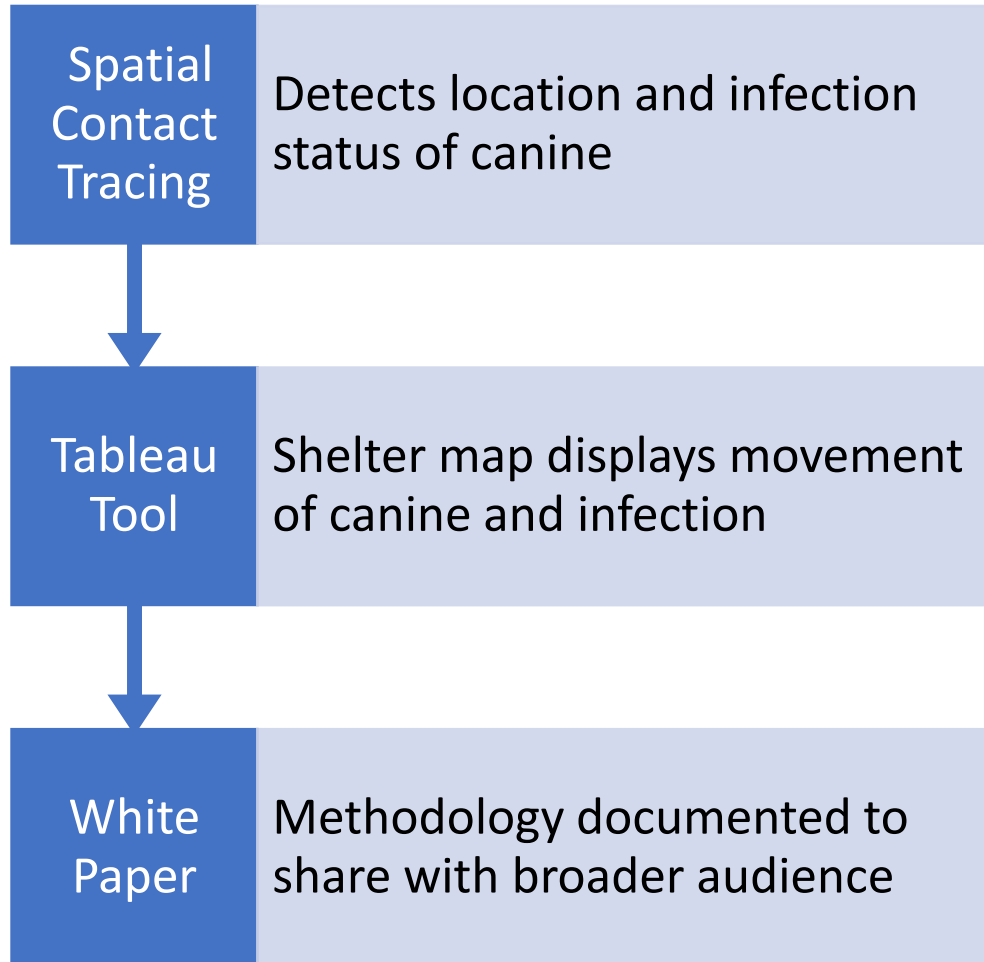
Scientific White Papers

Dallas Animal Services Disease Tracker

Can we create a tool that monitors the spread of infectious disease in Dallas animal shelters?



Solution



Impact



Help staff make informed decisions regarding proactive testing or quarantine of animals



Provides insight into the efficacy of protocol changes



Analysis been applied to both Canine Distemper and Canine Influenza



Digital shelter map available for additional spatial contact tracing analysis



City of Dallas

Data Analytics and Business Intelligence

**Government Performance &
Financial Management
May 21, 2024**

Dr. Brita Andercheck, Director
Dr. Malini Banerjee, Assistant Director
Data Analytics and Business Intelligence

Appendix

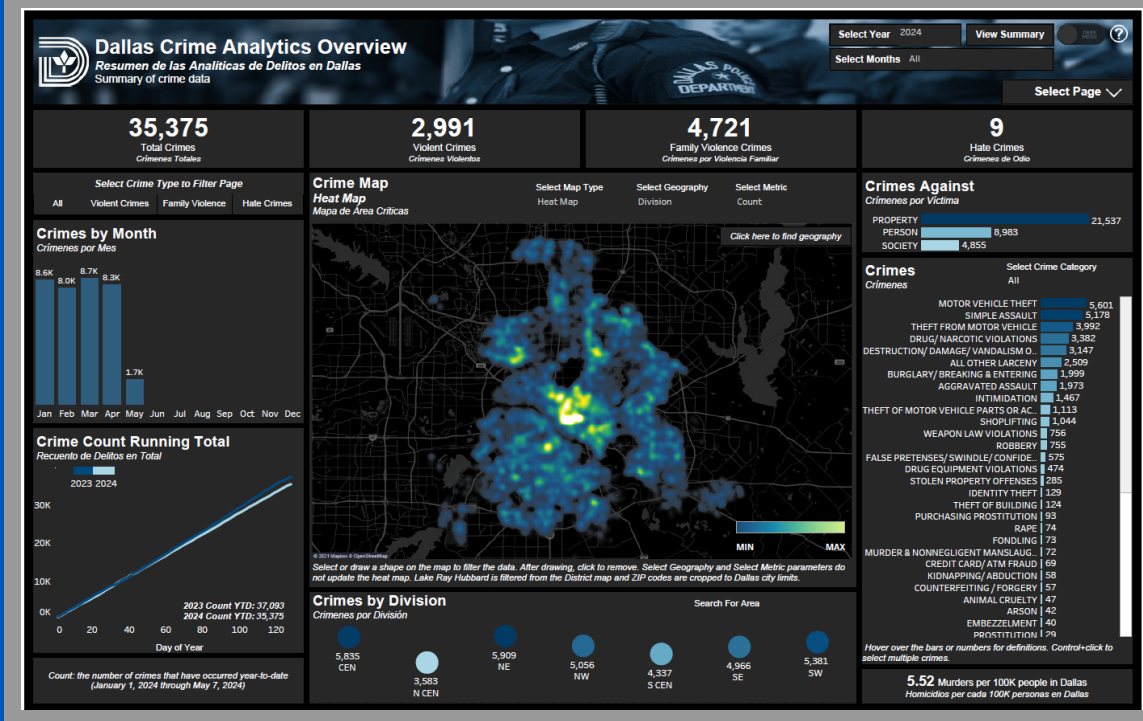


- A selection of some DBI products.



Crime Analytics Dashboard

Enabling the public to evaluate and make informed decisions on safety



Dallas Police Department (DPD)

The dashboard provides a comprehensive and interactive visualization of crime trends in Dallas, which enhances public awareness and facilitates informed decisions on safety.

- Demonstrates the year-over-year trend of crimes in Dallas which allows users to assess the safety of the city.
- Filterable by location and crime type which allows users to drill down to specific areas and crimes of interests.
- Contains additional elements including victim demographics, crime by day/time, and response times.

“As a department, we are always looking for ways to build community trust and increase transparency.

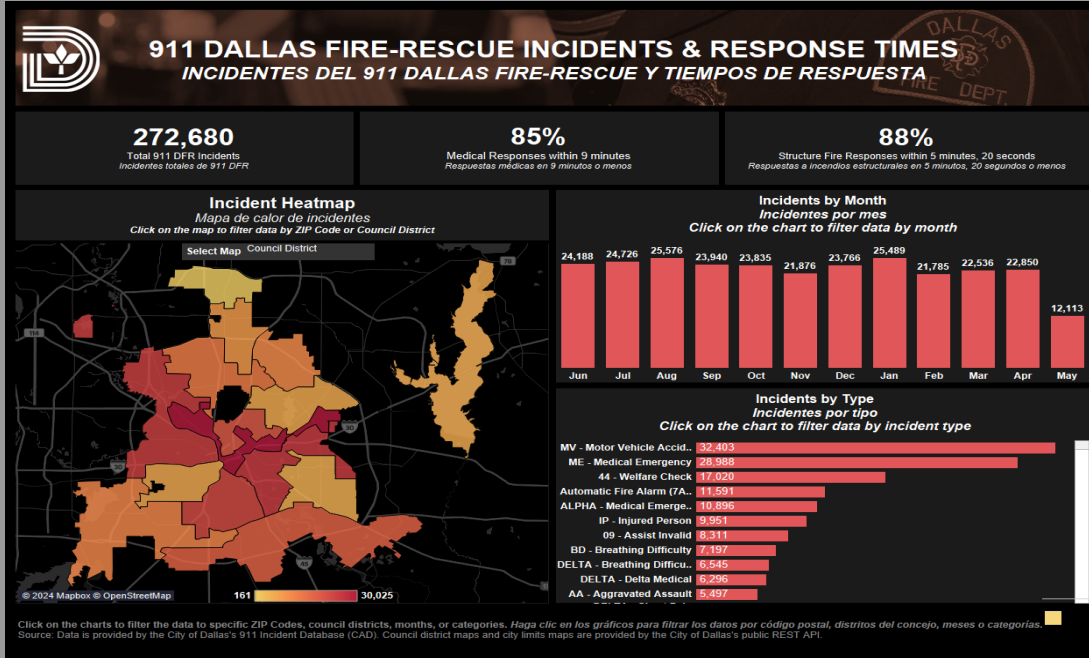
This new dashboard does just that.”

- Eddie Garcia, DPD, Police Chief



911 Dallas Fire-Rescue Dashboard

Enabling transparency and engagement between DFR and Dallas residents.



Dallas Fire-Rescue (DFR)

The dashboard is comprised of several pages and provides a comprehensive and interactive overview of DFR activity throughout the City and provides the public insight into:

- Frequency and type of incidents DFR responded to over a rolling 12-month period
- Incident response times
- Arsons, significant fires and fire fatality investigations
- Fire prevention and inspections
- Ambulance utilization
- DFR department budget and staffing

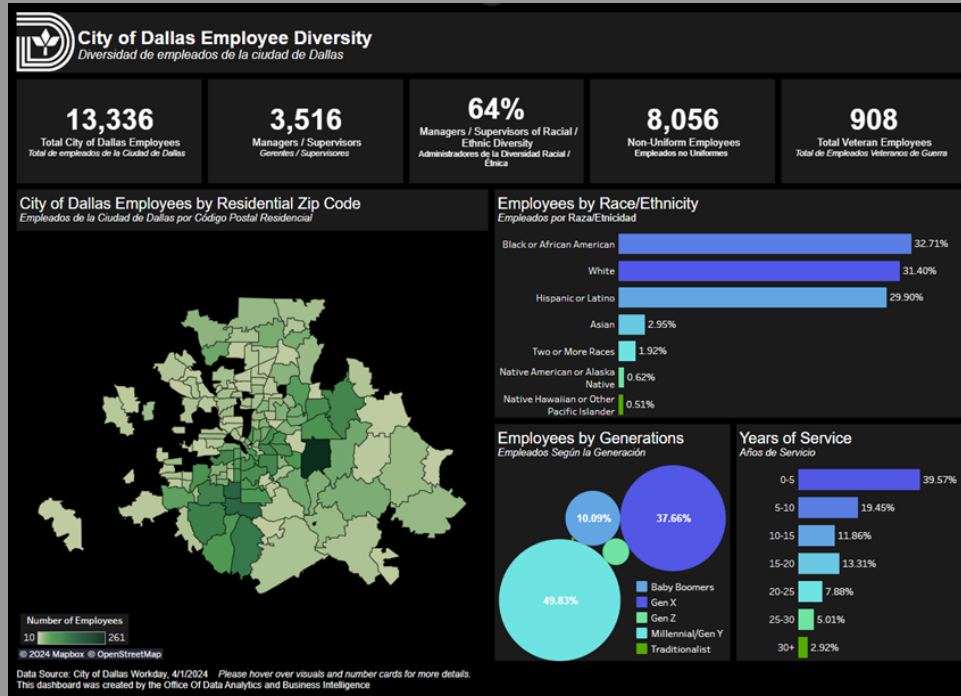
"This dashboard is critical to DFRs commitment to transparency and public trust and has saved us staff time."

- Dominique Artis, Fire Chief, DFR



Employee Diversity Dashboard

Showcasing the diversity of the City of Dallas workforce



Human Resources (PER)

This dashboard showcases the diversity of the City of Dallas workforce.

- Provides insight into demographics such as race/ethnicity, generate, ZIP code of residence, and veteran status
- Provides insight into the proportion of managers/supervisors of color

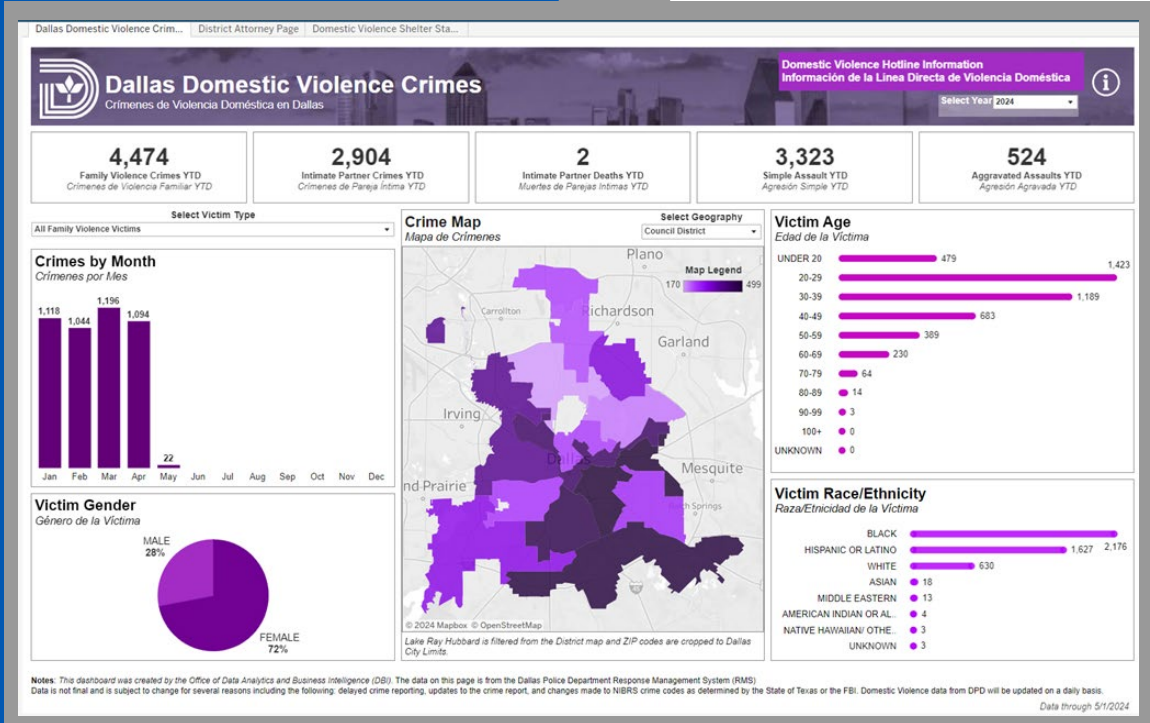
"This dashboard was made possible by our HR team with the support and expertise of Brita's amazing staff."

- Nina Arias, Human Resources, Director



Domestic Violence Dashboard

Demonstrating the City of Dallas' commitment to decreasing Domestic Violence



Domestic Violence and Human Trafficking Task Force

This dashboard provides education, increases awareness, and showcases the results of our combined efforts in the fight against domestic violence.

- Integrates data from Dallas Police, Dallas County District Attorney's Office, and local shelters to provide a wholistic view of Domestic Violence.
- Highlights year-over-year trends in domestic violence crimes which allows the public to monitor the Mayor's commitment to reducing domestic violence crimes.

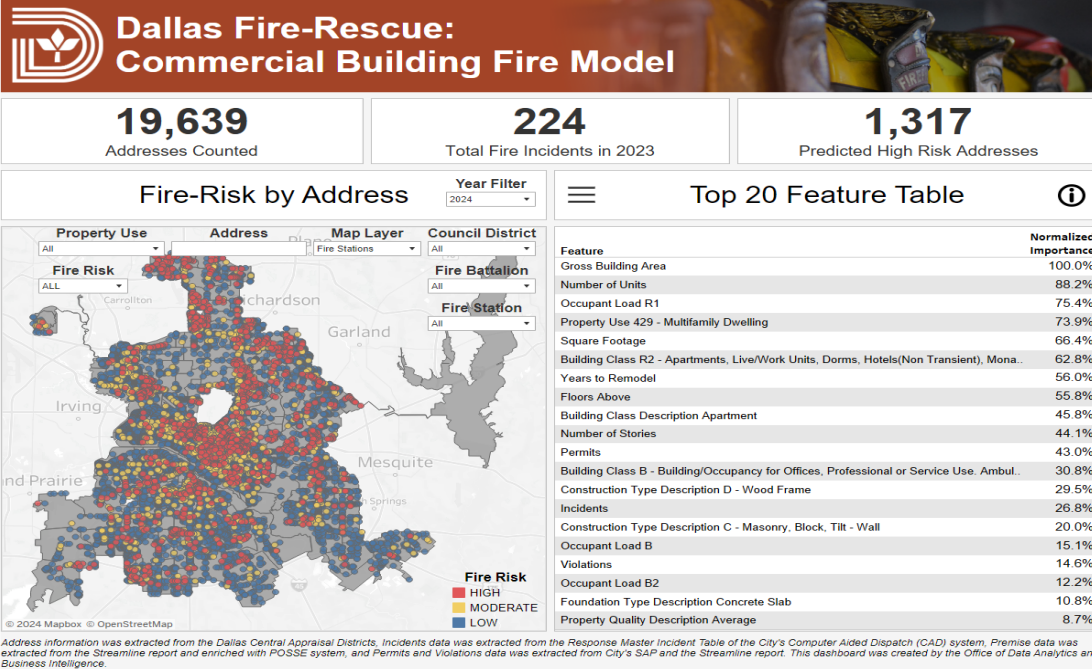
"This data can help our decisionmakers and the public measure and track domestic violence in our neighborhoods so that we can improve and refine our strategies to end this crime."

- Eric Johnson, City of Dallas, Mayor



Commercial Building Fire Model

Identifying at risk commercial structures for Dallas Fire - Inspections Unit



Dallas Fire-Rescue (DFR)

DBI and DFR aimed to build a predictive model to mitigate and prevent fires at commercial properties by identifying fire risk factors. This risk-based solution allows DFR to focus inspection efforts at areas of highest concern.

- Shows locations of at-risk properties throughout the City
- Shows factors related to fire risk
- Shows how factors contribute to fire risk
- Yearly data refreshes

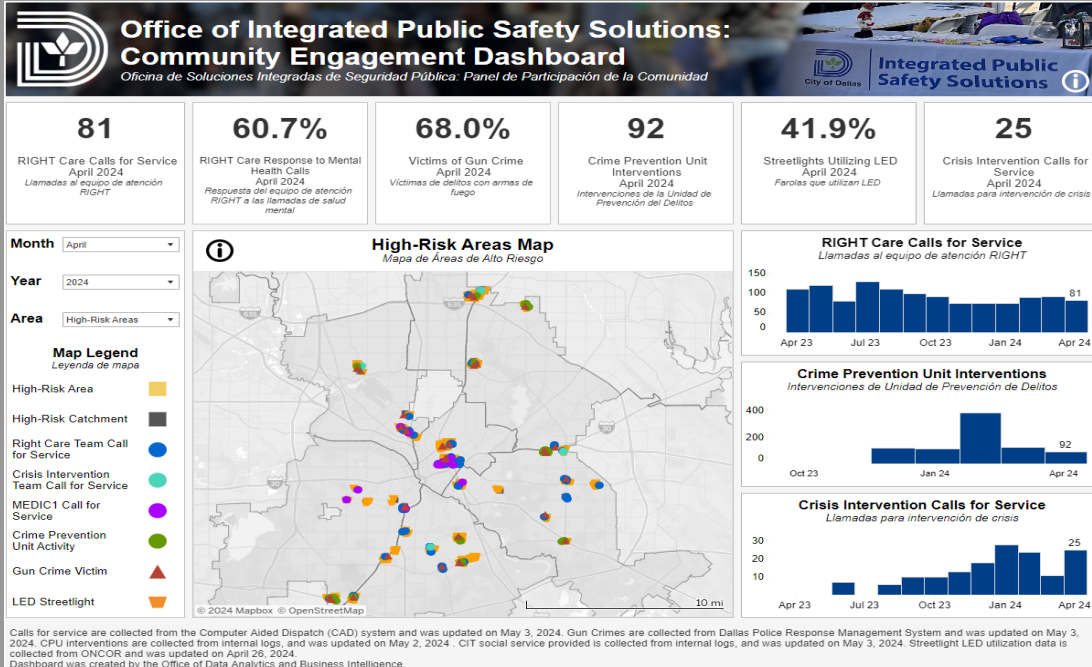
"With this project, you are saving lives, and property."

- Justin Ball, Executive Fire Assistant Chief, DFR



Community Engagement Dashboard

Monitoring Integrated Public Safety Solutions engagement with the community



Office of Integrated Public Safety Solutions (IPS)

DBI and IPS developed the community engagement dashboard highlighting IPS efforts to mitigate circumstances that encourage or promote criminal activity in high-risk areas and throughout the City of Dallas.

- RIGHT Care response and follow up activity
- Crime prevention unit activity
- Crisis intervention and MEDIC1 activity
- Year-over-year performance metrics
- 1008 staff hours saved annually

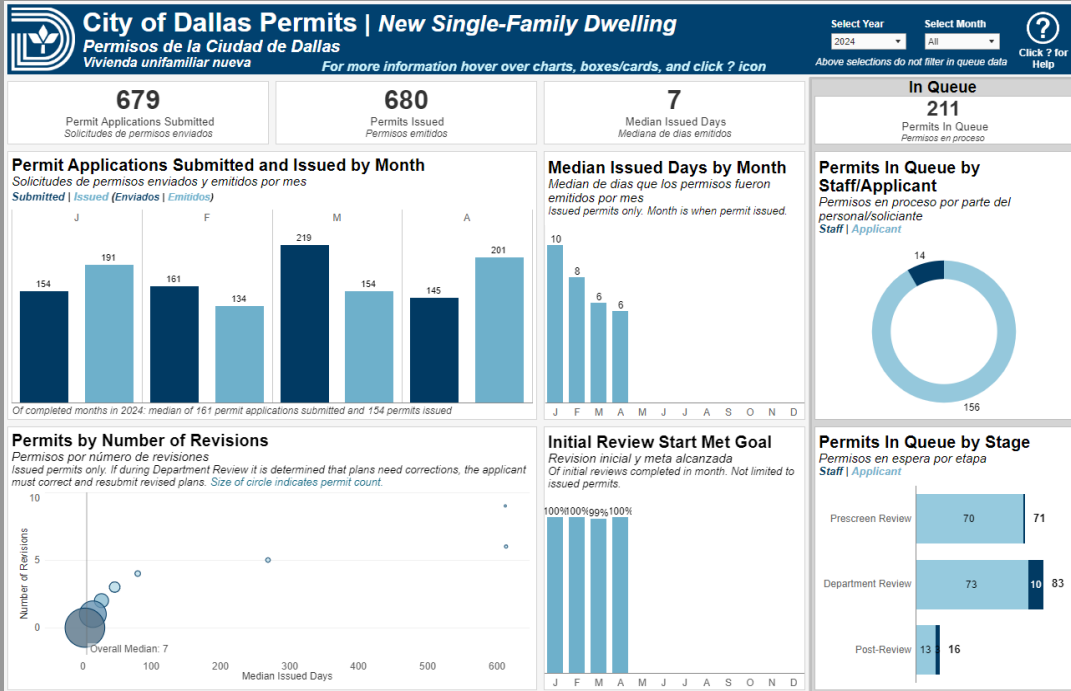
“Your team is awesome, like data wizards. I’m excited to have this dashboard and am already using it.”

– Kevin Oden, Director, IPS



Residential Permits Dashboard

Instant insight into new residential building activity in Dallas



Development Services (DEV)

The suite of Residential Permits Dashboards improve the operational efficiency and promotes public accountability of our permitting process.

- Demonstrates the volume of residential development and building activity in Dallas.
- Reveals applicant and staff responsibility throughout the permitting process.
- Identifies specific areas for efficiency improvements by providing data for review stages, number of revisions, in-queue permits, and more.
- 2,340 staff hours saved annually.

“When we released the Single-Family Residential Permits Dashboard we were issuing permits in over 60 days. Now we are issuing permits in 6 days. The dashboard helped us achieve that.”

Vernon Young, Assistant Director, Development Services



Human Trafficking Victim Identification

Assisting detectives in identifying potential high-risk victims of human trafficking



Dallas Police Department (DPD)

This dashboard aids Dallas Police detectives in identifying incidents that might involve an individual at high risk of being trafficked.

- Searches crime incident report for relevant key words related to human trafficking.
- Provides a data-driven approach to identifying potential high-risk victims
- Potentially helps detectives discover more high-risk victims in a shorter time
- Manual identification of the entire dataset takes about 7.6 years. The algorithm takes less than one hour.

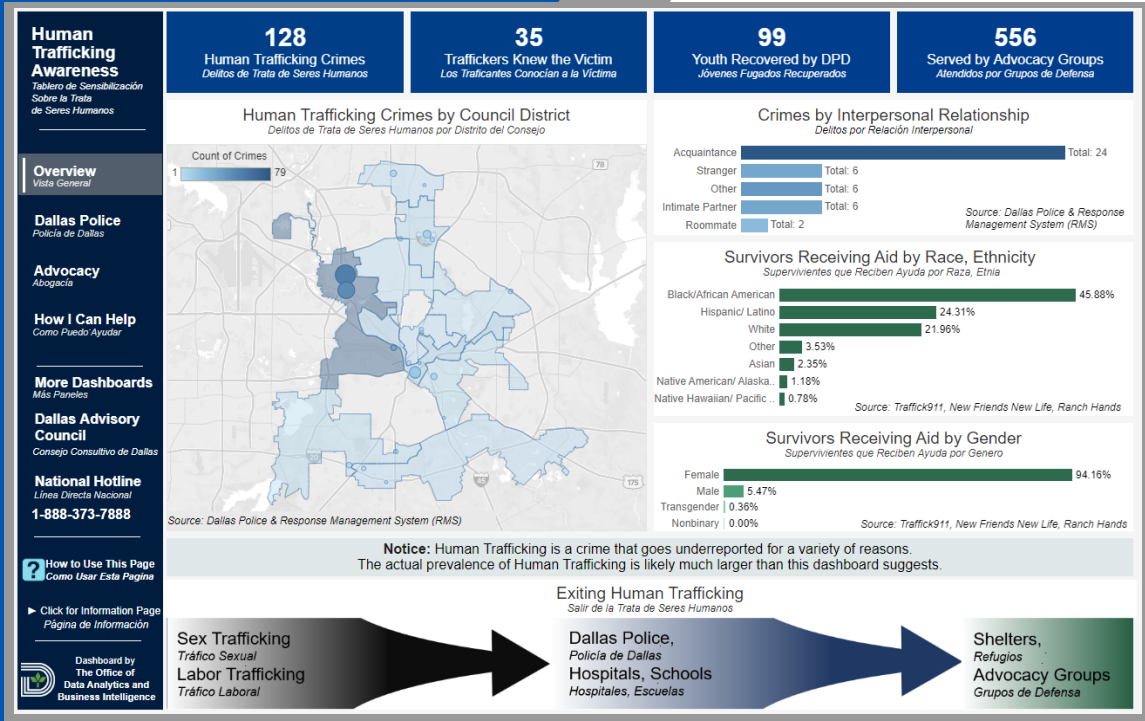
"This is amazing, and it can help our detectives identify more human trafficking victims, which means we can help more victims get the help they need."

- Eddie Garcia, DPD, Police Chief



Human Trafficking Awareness

Revealing the magnitude of human trafficking and providing resources to those in need



Domestic Violence and Human Trafficking Task Force

This dashboard provides education, increases awareness, and showcases the results of our combined efforts in the fight against human trafficking.

- Integrates data from Dallas Police and local advocacy groups to provide a wholistic view of Human Trafficking
- Provides resources to help those in need. It contains information about human trafficking, contact details and website of our partner advocacy groups, and the National Human Trafficking Hotline phone number.

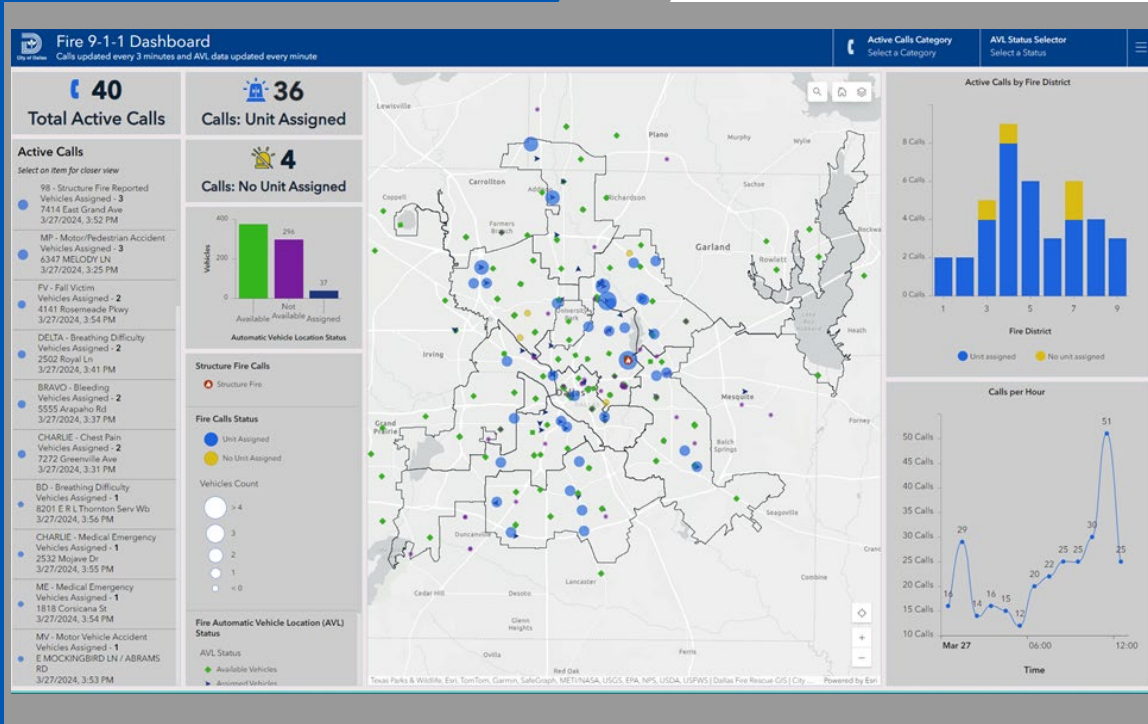
“What we know about the world of human trafficking is that entering it is not a choice. Instead, it is the absence of choice and options that often lead victims down this path of trauma and abuse. This dashboard helps tell that story.”

–Bianca Davis, CEO, New Friends New Life



Fire 9-1-1 Dashboard

Providing DFD with better situational intelligence with near real-time data.



Fire 9-1-1 Dashboard

Dallas Fire and Rescue Department (DFD)

The fire 9-1-1 Dashboard provides DFD leadership with operational intelligence concerning active fire 9-1-1 calls and DFD vehicle readiness to optimize the emergency response to fire incidents.

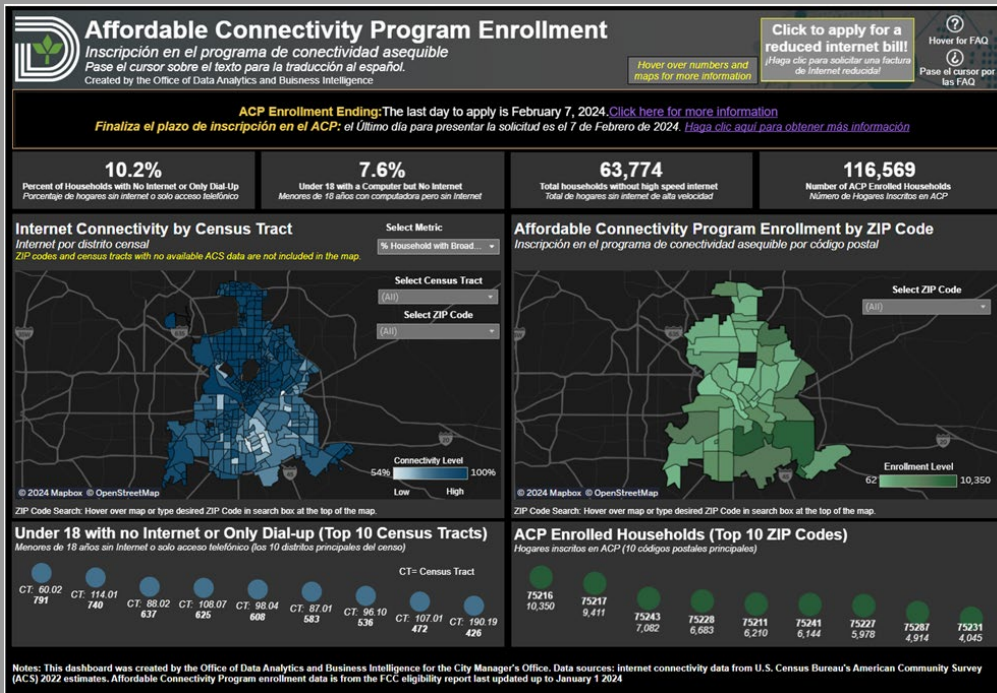
- Provides the near real-time spatial location of active fire 9-1-1 calls and fire vehicle statuses.
- Increased situational awareness by near real-time monitoring of fire department resources.
- Tracks the volume of calls received for each fire district per hour.

"We have wanted a dashboard like this for a while.
The DBI team did a great job!"
- Chief Artis, Dallas Fire and Rescue



Affordable Connectivity Program Dashboard

Revealing and monitoring the Digital Divide in Dallas



City Manager's Office (CMO)

This dashboard uses internet connectivity data from the U.S. Census Bureau and Affordable Connectivity Program (ACP) enrollment data to highlight the Digital Divide in Dallas.

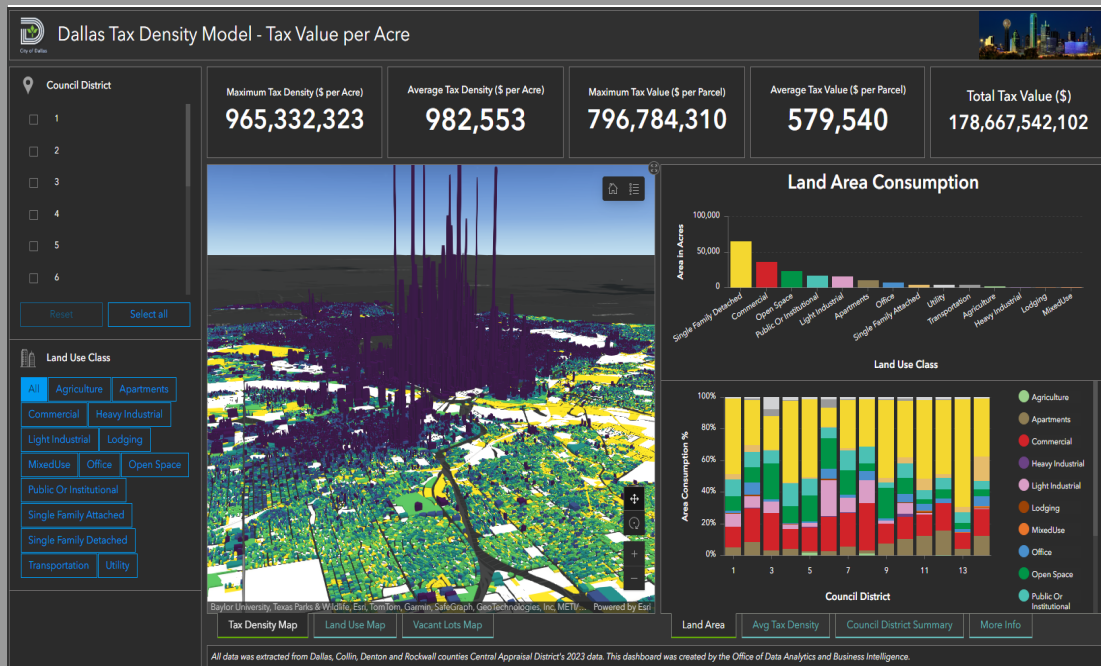
- Enables the City of Dallas to focus outreach on specific census tracts to increase ACP enrollment
- Showcases trends in internet connectivity and ACP enrollment to monitor changes in the Digital Divide over time.
- 72 staff hours saved annually

"This tool will help us get internet to people in need.
Thank you to DBI for your work on this."
- Bill Zielinski, CIO, ITS



Tax Density Model – Tax Value per Acre

A 3-dimensional view of how the City of Dallas generates tax revenue



Department of Planning & Urban Design (PUD)

DBI and PUD aimed to explore how the current land use affects the City's economic health. Focusing on taxable value, DBI developed an application that plots City of Dallas properties 3-dimensionally and can be used for:

- Land insight: See land value and use per parcel.
- Identifying development land: Find vacant lands ready for use.
- Dispel tax misconceptions: Correct wrong tax beliefs.
- Development strategies: Propose ways for sustainability without tax hikes.

“DBI's Tax Density app has reshaped City tax insights. It shows higher-density parcels boost tax revenue. This supports smarter land use for future development.”

– Andrea Gilles, AD, PUD



Mayor and City Council ARPA Dashboard

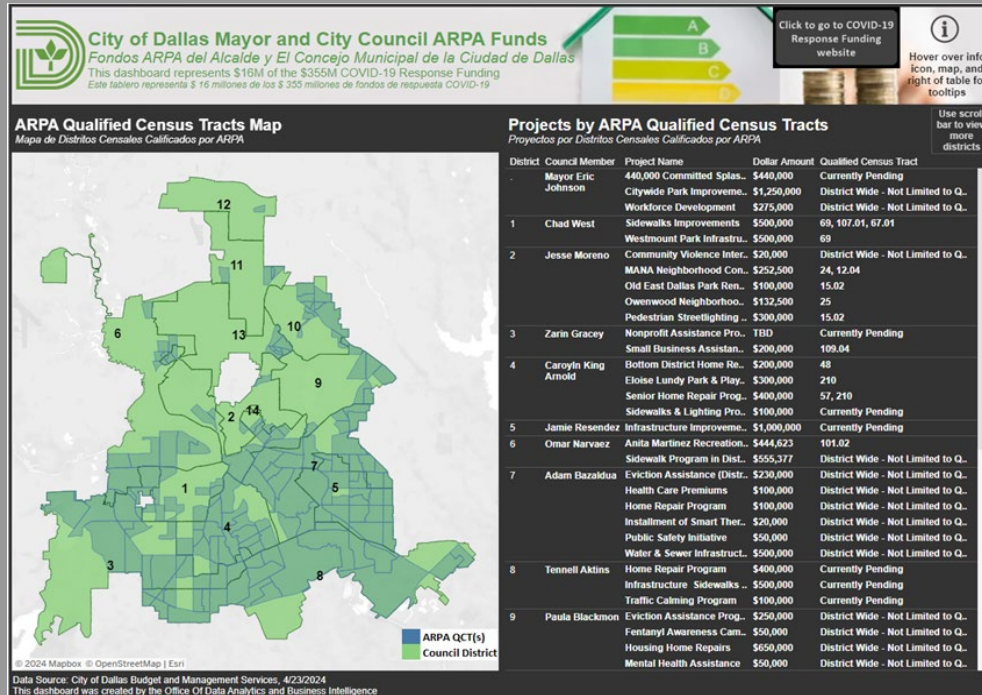
Providing transparency into ARPA fund allocations



Budget and Management Services (BMS)

This dashboard provides transparency into the \$16 million American Rescue Plan Act of 2021 (APRA) funds that were distributed to the Mayor and City Council.

- Provides insight into funds allocated by council member.
- Details projects with funds allocated.
- 50 staff hours saved annually.



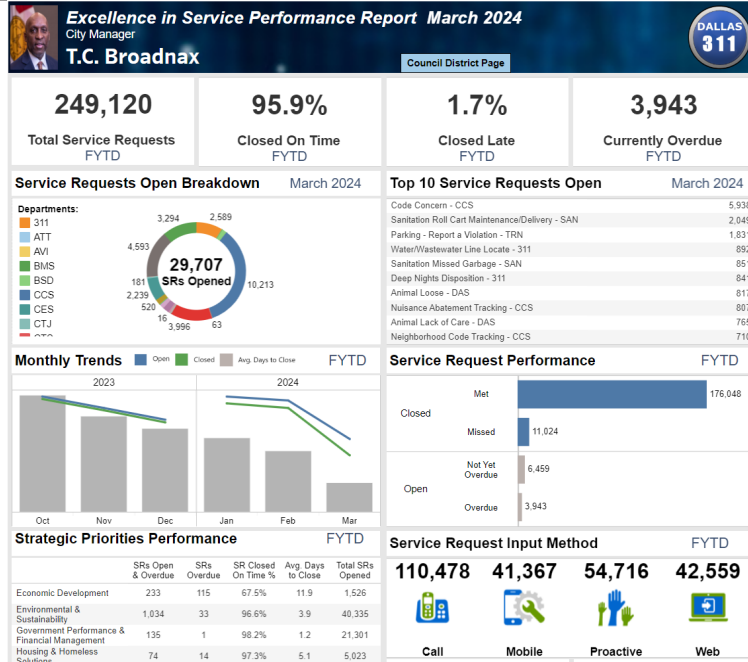
"We are grateful to DBI for helping us provide public transparency into our ARPA fund allocations. "

- Jack Ireland, City of Dallas, CFO



311 – Excellence in Service Reports

Monitoring the City of Dallas's commitment to excellent customer service



311

DBI has partnered with 311 to automate the Excellence in Service Reports, providing streamlined reporting through automated data connections and monthly emails. Reports include:

- Custom pages: Fully personalized recipient experiences
- Top requests: Main service request types
- Request alignment: By City strategic priority
- Request origins: Where submissions come from
- 516 Staff hours saved annually

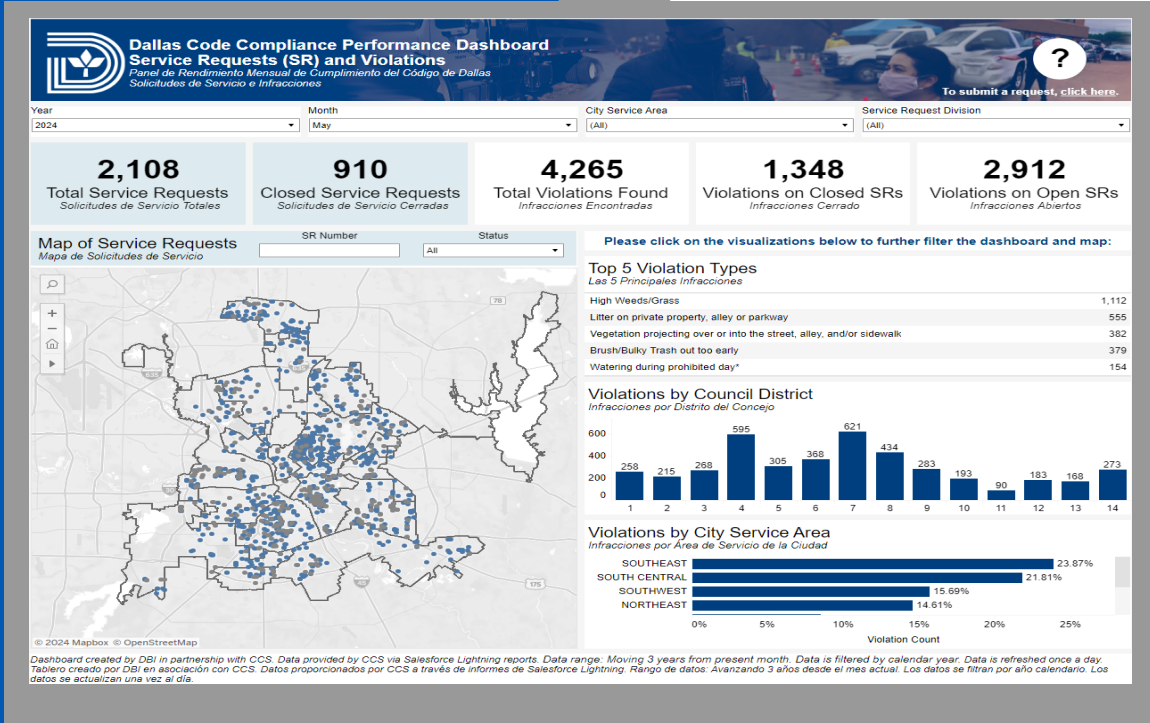
"DBI has reimaged 311 reporting by automating the process, enhancing data integrity, and boosting efficiency by removing manual tasks."

- Daisy Fast, Director, 311



Code Compliance Performance Dashboard

Monitoring the City of Dallas's commitment to excellent customer service



Department of Code Compliance (CCS)

DBI and CCS launched a public dashboard for Dallas residents that provides insights into code compliance activity. Dallas residents can now easily access up-to-date Code Compliance service request information.

- Shows service request activity
- Tracks abatement requests
- Measures response times

"This dashboard benefits Dallas residents by enhancing engagement and collaboration between Code Compliance and the community."

- Jeremy Reed, Assistant Director, Code Compliance



Distemper Dashboard and Tracker

Allowing Dallas Animal Services to monitor disease spread within the shelter



Dallas Animal Services (DAS)

In November 2022, DAS noted an increase in canine distemper virus (CDV). To potentially mitigate a within shelter disease outbreak amongst canines, DBI developed a custom tracking tool that spatially identifies the location of canines within the shelter. As a result, DAS now can:

- Identify where confirmed positive CDV cases are in the shelter
- Locate and monitor at-risk healthy cases in the shelter
- Spatially view shelter disease movement by day and month
- 1,100 staff hours saved annually

"This is critical in stopping disease and the first product of its kind in animal welfare. "
- Melissa Webber, Director, DAS



South Dallas Drug Court – Assessment Report

Vital statistics for continued funding of the South Dallas Drug Court – Treatment Program



TABLE OF CONTENTS



INTRODUCTION	3
ANALYSIS	4
CLIENT PARTICIPATION, NEED ASSESSMENT, AND IDENTIFIED RISK	4
DEMOGRAPHICS	5
CRIMINAL HISTORY AND TREATMENT	6
MENTAL HEALTH, SUBSTANCE USE DISORDERS, AND HOUSING STATUS	7
NATIONAL OUTCOME MEASURES	8
CONCLUSION	9

CITY OF DALLAS

City Attorney's Office (ATT)

DBI partnered with ATT to generate the Center of Substance Abuse Treatment Fund grant report for the City of Dallas Drug Court Program. These grant reports are generated every 6-months throughout the fiscal calendar year and includes:

- Client participation
- Client demographics
- Client risk and needs
- Substance abuse and mental health treatment modalities
- National outcome measures

"Thank you for your assistance, I think that these reports look great! We are looking forward to another successful collaboration."

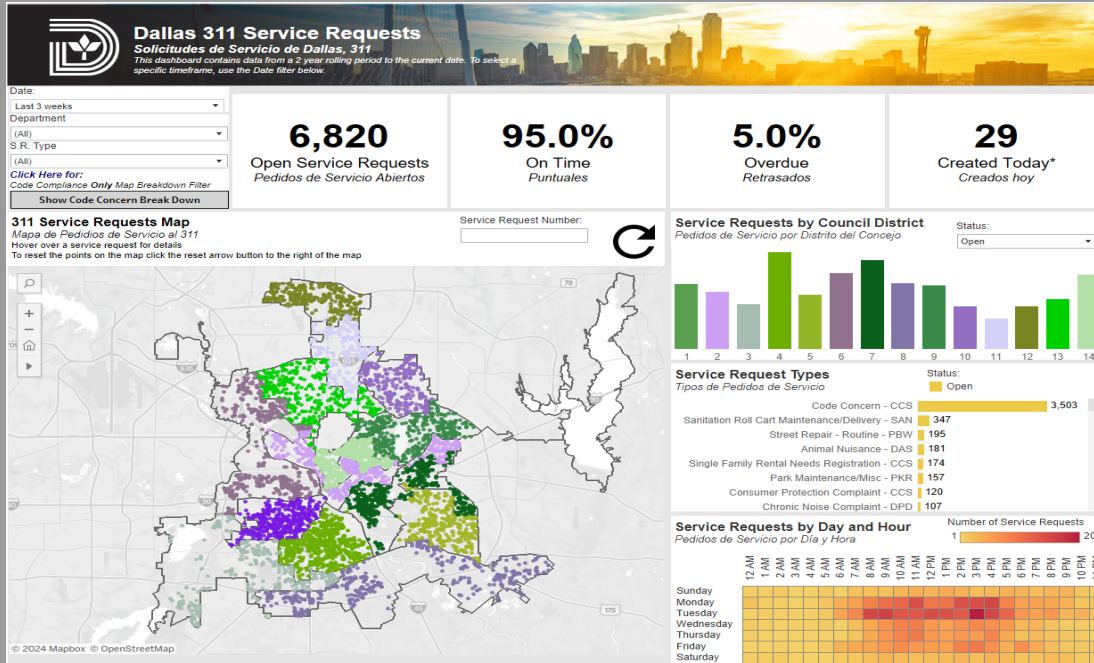
- Matthew Saliba, Section Chief, City Attorney's Office





311 Public Dashboard

Monitoring the City of Dallas's commitment to excellent customer service



311

The 311 Public dashboard developed by DBI provides Dallas residents insight and transparency into 311 service request activity. The dashboard provides information into open and closed service requests and displays metrics on:

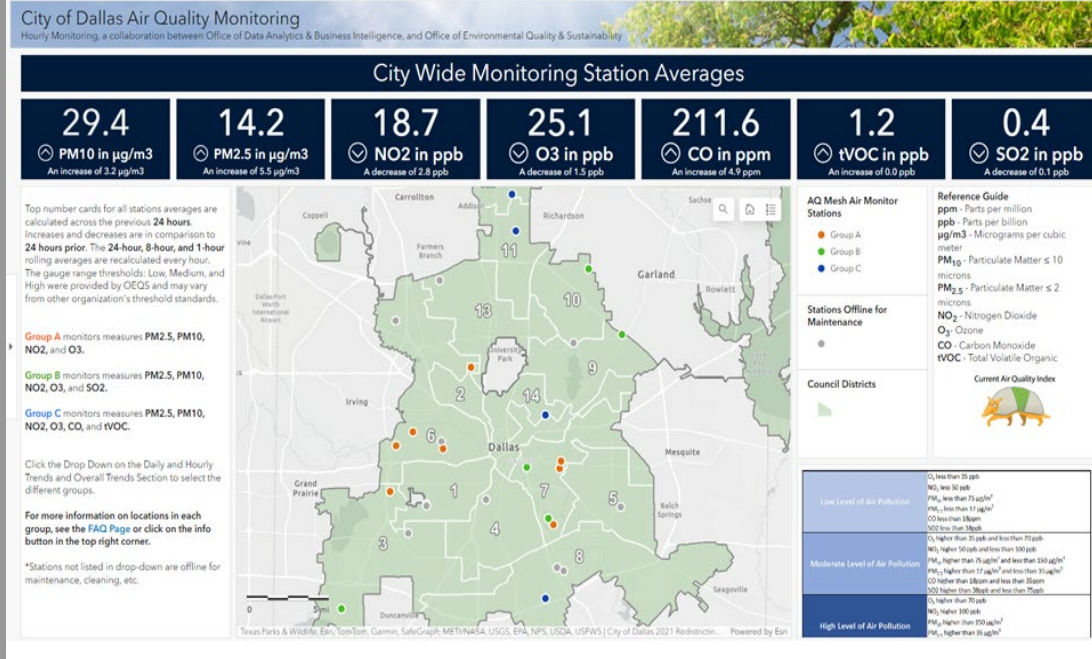
- On time performance
- Breakdown by top service request types
- Service requests by day and hour
- Service requests by City of Dallas council districts

"This dashboard benefits Dallas residents by enhancing transparency and engagement between 311 and the community."
- Daisy Fast, Director, 311



Air Quality Monitor Dashboard

Empowers the public with air quality information for informed actions



Office of Environmental Quality & Sustainability (OEQS)

The Air Quality Monitor Dashboard allows OEQS and residents to monitor air quality at a neighborhood level through a unified platform featuring seven distinct dashboards.

- Empowers residents to monitor public health, mitigate pollution, and promote sustainable development through comprehensive air quality data.
- Promotes awareness of environmental issues and encourages informed actions.

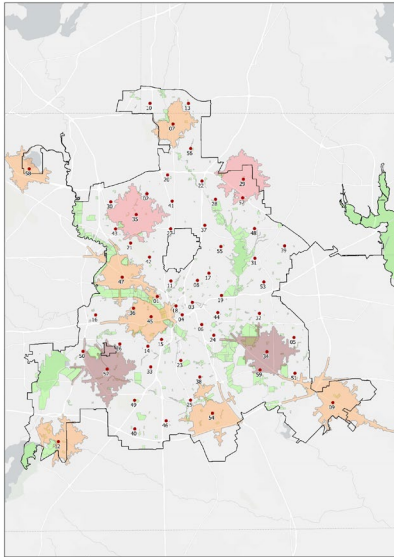
“The dashboard looks impressive and easy to use! This information is important to the health of residents and departments will be very happy.”

- Carlos Evans, Director, OEQS



Grass Fire Response Analysis

Optimizing DFD resources to better protect residents and fight grass fires.



Dallas Fire and Rescue Department (DFD)

DBI worked with the DFD to identify the areas in Dallas best served by a grass fire unit stationed nearby. By identifying the areas most at risk from grass fires DBI and DFD are safeguarding Dallas's residents and their property.

- By modeling drive times DBI was able to identify the fire stations that can quickly respond to grass fires.
- Combining data analysis with institutional knowledge to best protect Dallas's residents from the threat of grassfires.

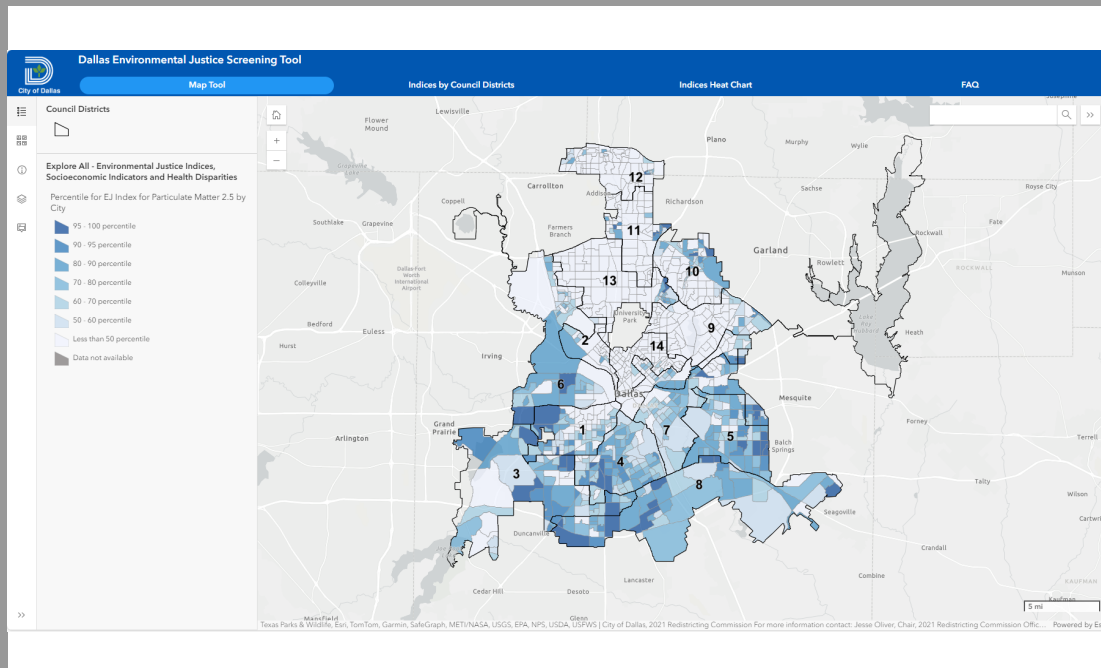
"It was critical that we get data driven decisions on wildland stations before grassfire season, DBI did an incredible job running this analysis and helping us identify the best stations in a very short time frame. The DBI team did a fantastic job!"

- Executive Assistant Chief Justin Ball
and Executive Deputy Chief Scott Pacot



Dallas Environmental Justice Screening

Better understanding the environmental and social issues facing Dallas



Office of Environmental Quality and Sustainability (OEQS)

Using the EPA's Environmental Justice data, DBI created an application so that users could explore and better understand the environmental and social issues facing Dallas's residents.

- Helps to identify communities facing environmental challenges and how social issues can affect those challenges.
- Users can explore the issues facing their communities and others in Dallas.

[Dallas Environmental Justice Screening](#)

Quote coming soon.



Community Lifelines Application

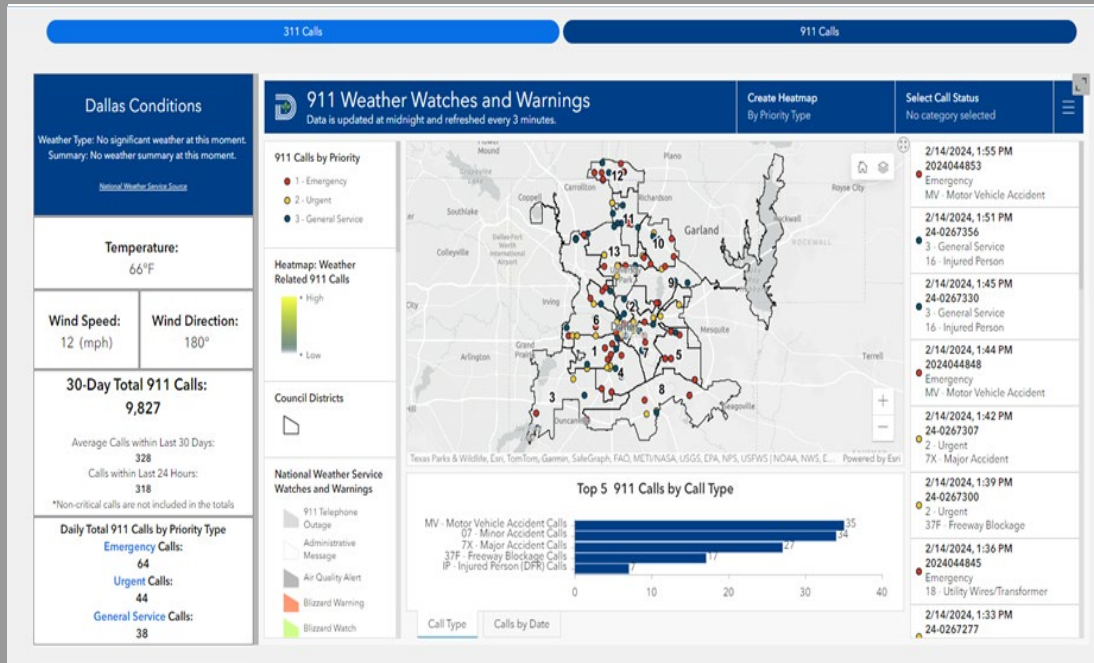
Enables emergency responders with vital information for rapid and informed action



Office of Emergency Management (OEM)

Community Lifelines Application allows OEM to display weather-related issues in near real-time, enabling more effective emergency response and resource allocation during crises.

- An enhanced emergency response provides vital capabilities for analyzing weather events and monitoring power outages in near real time.
- Empowers leadership to make informed decisions based on comprehensive, up-to-date information, optimizing emergency management strategies.



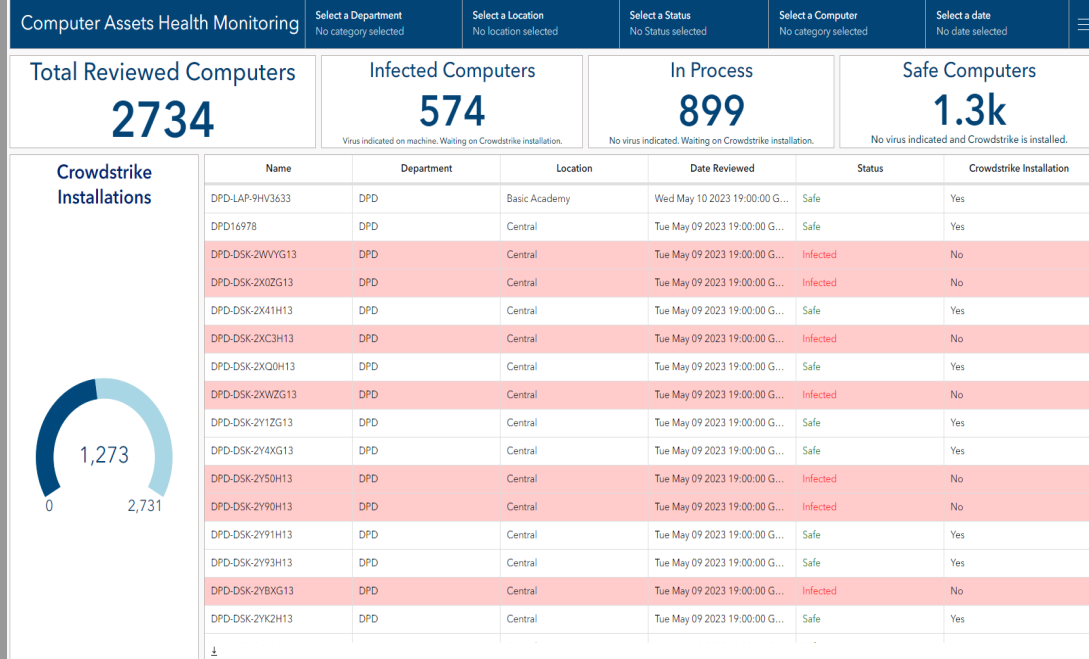
“The dashboard is awesome! We were using it to keep up with accidents happening in the EOC and were all very impressed with what DBI created!”

- Travis Houston, Director, OEM



ITS Cyber Attack Asset Management

Enable rapid response of IT assets during cyber attack



Information & Technology Services (ITS)

During the ransomware attack in May 2023, DBI supported ITS in managing their assets for infection status. DBI assisted in identifying infected computers, displaying virus indicators, and monitoring users awaiting installation of malware protection software.

- Quickly identify highly vulnerable departments, allowing rapid action to isolate infected assets.
- Mitigate the impact of the ransomware attack.

"Thanks to the dashboard, we were able to hit our reporting deadline of accounting for and triaging infected assets."

-Laura Biggins, ITS



Market Value Analysis StoryMap

Provides crucial housing information to the community and City leadership



Department of Housing & Neighborhood Revitalization

The StoryMap provides information about housing market types, housing affordability, displacement risk ratio, and investor share of home purchases to City leadership and staff, developers, and residents.

- Transparently communicates housing metrics and findings for the City in an accessible manner.
- Distills complex housing data into a digestible format.
- Provides interactive exploration for users to learn more about housing concerns.

"This is far and above what we expected. The Story Map is polished, aesthetically pleasing, and makes it easy to understand complicated housing information."

- Thor Erikson

AD, Housing & Neighborhood Revitalization



Grants Tracking Dashboard

How the city manages 250 million grant dollars annually

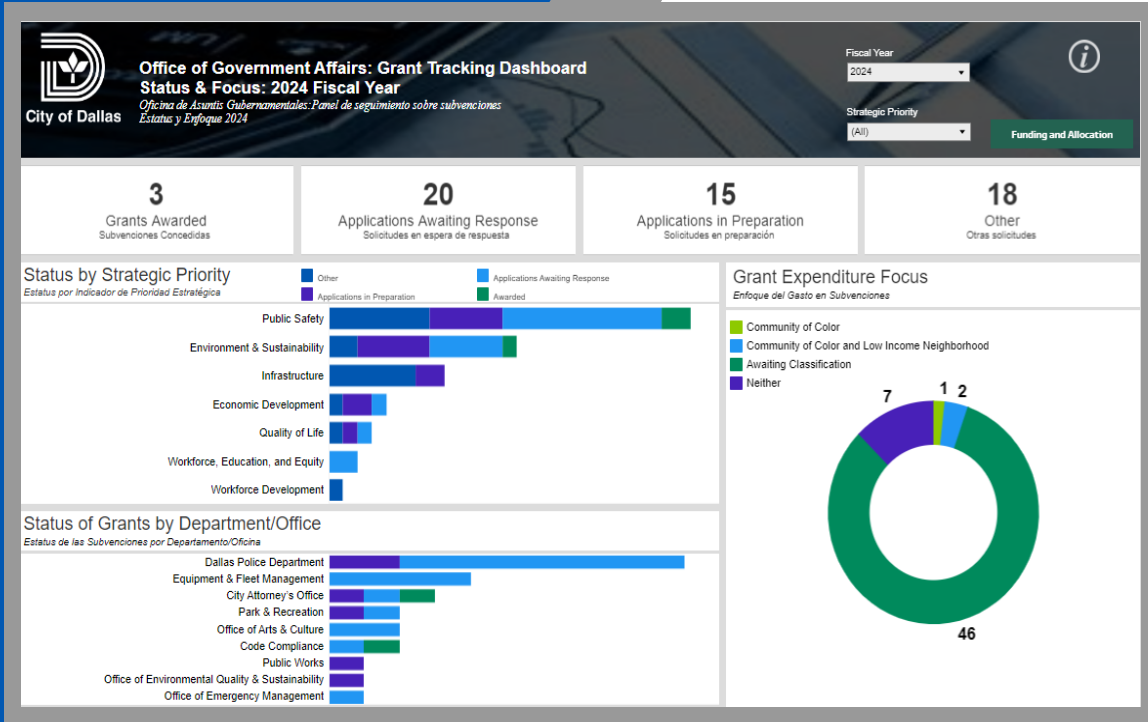


Office of Government Affairs (OGA)

The Grant Tracking Dashboard allows the OGA's Fund

Development Unit to display the incredible work of securing grant funding for the city in a brief, easily digestible format.

- Transparency for residents about how grant funding is acquired and used within the City.
- Allows valuable comparison and analyses between departments and over multiple fiscal years.



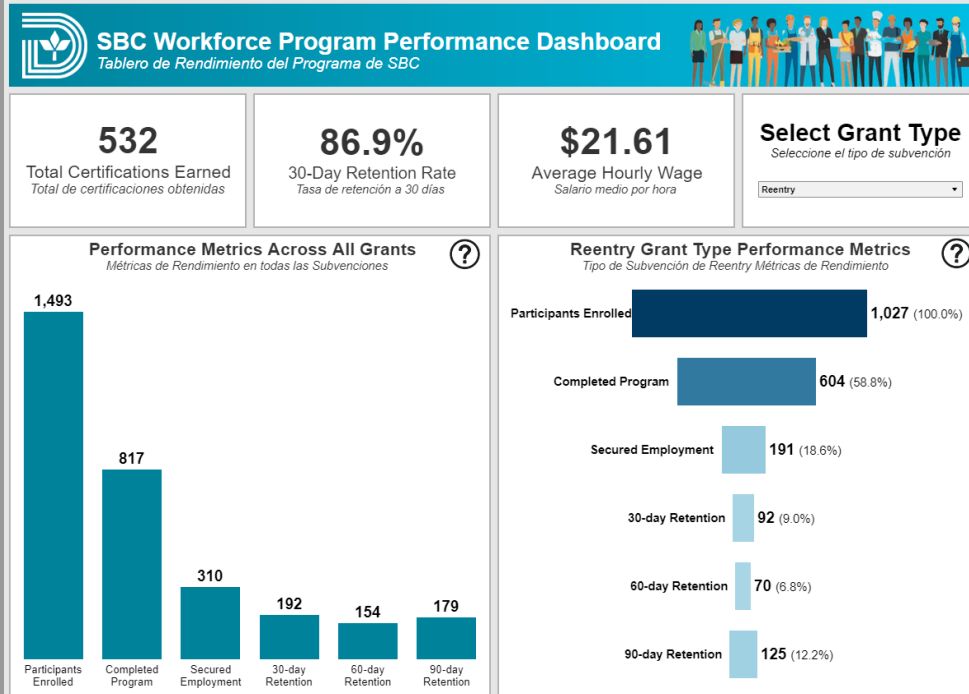
"The OGA Grants Dashboard creates transparency and promotes the City of Dallas' competitive funding efforts by strategic priority and City Council-adopted plan."

- Carrie Rogers
Director, Office of Government Affairs



Workforce Program Dashboard

How the City of Dallas helps people upskill and re-enter the workforce



Small Business Center (SBC)

This dashboard monitors and displays the effectiveness of various Workforce Development programs.

- Provides insights into the overall performance of Workforce programs.
- Highlights program employment and retention rates.
- Displays data by specific grant type.
- 480 staff hours saved annually.

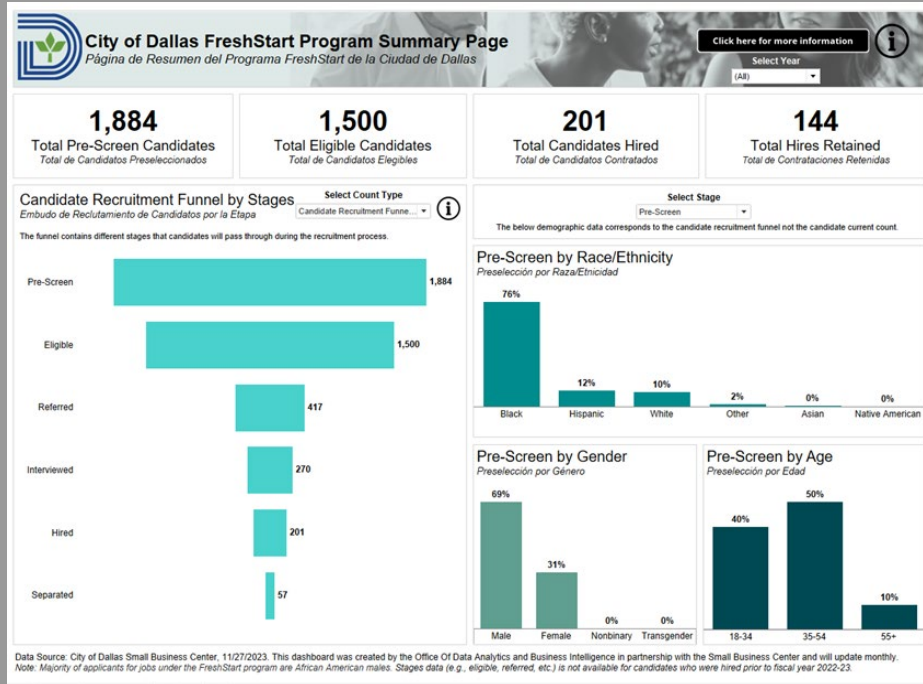
"DBI's expertise helped us better understand the performance of our Workforce program and this tool helps us remain transparent with the public."

- Joyce Williams, Director, SBC



FreshStart Dashboard

How the City of Dallas enables new beginnings



Small Business Center (SBC)

This dashboard shows the performance of the FreshStart program and details the number of people the program is helping.

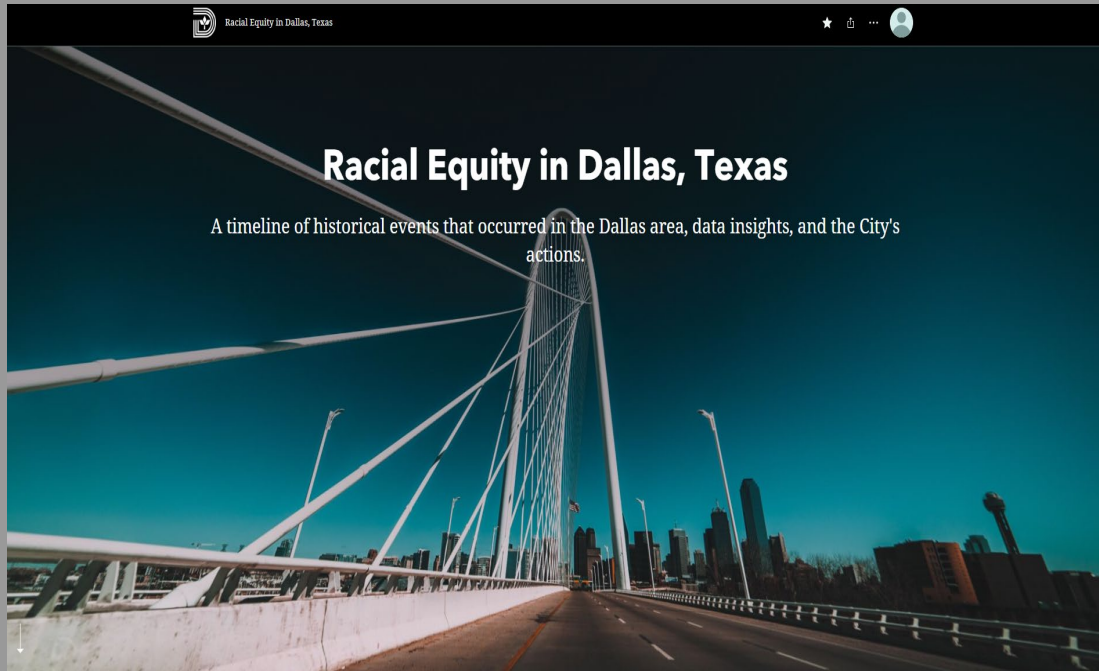
- Tracks candidates from Pre-Screen to Hired
- Showcases the good work done through the FreshStart program
- Provides candidate demographic data which shows who the program is helping
- 100 staff hours saved annually

"DBI's expertise helped us better understand the performance of our FreshStart program. This tool helps us market the program and remain transparent with the public."
– Joyce Williams, Director, SBC



Racial Equity StoryMap

Narrative of how racial equities have evolved over time in Dallas



Office of Equity & Inclusion (EQU)

The StoryMap is a timeline of historical events that occurred in the Dallas area in relation to racial equity and includes historical documents, images, and interactive maps.

- The immersive story provides accessible information about racial equity in Dallas' past, present, and future equity endeavors.
- Transparently highlights historical racial inequities and efforts towards an equitable Dallas.
- Empowers the community to explore and learn more about the history of their neighborhood and the City.

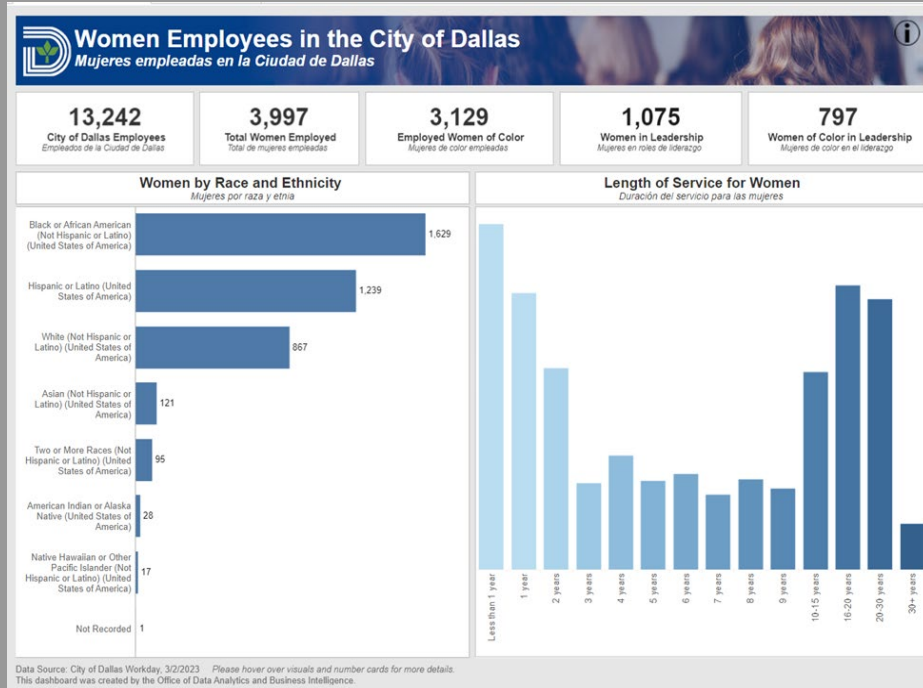
"The StoryMap is a step forward in transparency and awareness of historical inequities, and communicates what the City is doing to address them."

*T.C. Broadnax
Former City Manager*



Women's History Month Dashboard

Showcasing the gender diversity of City of Dallas workforce



Human Resources (PER)

This dashboard celebrates women employees at the City of Dallas and showcases the gender diversity of our workforce.

- Provides insight into the ratio of women at both the individual contributor and management level
- Includes further breakdowns including race/ethnicity, tenure, ZIP code of residence, and veteran status.

"We are grateful for DBI's help communicating the City of Dallas' commitment to empowering our women employees."

Nina Arias, Human Resources, Director

