

CITY PLAN COMMISSION**THURSDAY, APRIL 10, 2025****FILE NUMBER:** S245-060R**SENIOR PLANNER:** Hema Sharma**LOCATION:** Spruce Valley Lane, south of Pentagon Parkway**DATE FILED:** March 12, 2025**ZONING:** R-7.5(A)**CITY COUNCIL DISTRICT:** 3**SIZE OF REQUEST:** 1.107-acres**APPLICANT/OWNER:** Richard Stauffer, City of Dallas

REQUEST: An application to revise a previously approved plat (S245-060) to create one 1.017-acre lot from a tract of land in City Block 6979 and to dedicate right-of-way on property located on Spruce Valley Lane, south of Pentagon Parkway.

SUBDIVISION HISTORY:

1. S245-060 was a request at the same location as present request to create one 0.894-acre lot from a tract of land in City Block 6979 and to dedicate right-of-way on property located on Spruce Valley Lane, south of Pentagon Parkway. The request was approved on January 23, 2025 but has not been recorded.

STAFF RECOMMENDATION: Section 51A-8.503 states that “lots must conform in width, depth and area to the pattern already established in the adjacent areas, having due regard to the character of the area, its particular suitability for development, and taking into consideration the natural topography of the ground, drainage, wastewater facilities, and the proposed layout of the streets.”

It is a policy of the city that recreational uses generally require different land area than residential or non-residential lots and generally serve, and are compatible with the neighborhood; therefore, staff concludes that the request is in compliance with Section 51A-8.503 and with requirements the R-7.5(A) Single Family District; therefore, staff recommends approval of the request subject to compliance with the following conditions:

General Conditions:

1. The final plat must conform to all requirements of the Dallas Development Code, Texas Local Government Code, Texas Land Surveying Practices Act and the General Rules and Regulations of the Texas Board of Land Surveying.
2. Department of Development Services, Engineering Division must verify that the plat conforms with the water, wastewater, and easement requirements under the provisions of Chapter 49 of the Dallas City Code.
3. Compliance with all plans, contracts, ordinances, and requirements of the City of Dallas. *Section 51A-8.102(a), (b), (c), and (d)*
4. The number and location of fire hydrants must comply with the Dallas Fire Code.
5. Any new or existing structure may not extend across new property lines. *Section 51A-8.503(e)*

6. On the final plat, all easement abandonments, and ROW abandonments must be by separate instrument with the recording information shown on the face of the plat. A release from the Real Estate Division is required prior to the plat being submitted to the Chairman for signature.
7. On the final plat, include two boundary corners tagged with these coordinates: "Texas State Plane Coordinate System, North Central Zone, North American Datum of 1983 on Grid Coordinate values, No Scale and no Projection."
8. On the final plat, monument all set corners per the Monumentation Ordinance. Prior to submittal of the final plat for the Chairman's signature. The monuments must be verified by the Chief City Surveyors Office in the Public Works Department. *Section 51A-8.617*
9. Provide ALL supporting documentation (i.e. deeds, plats, ordinances, easements...etc) with a completed Final Plat Checklist to the Survey Plat Review Group (**SPRG**) with the Final Plat Submittal **after** City Plan Commission Approval.
10. Prior to the final plat, submit a tree survey to the Arborist. A release from the arborist is required prior to an early release request or the recordation of the plat, whichever occurs first.
11. The number of lots permitted by this plat is one.

Paving & Drainage Conditions:

12. Submit a full set of Civil Engineering Plans (drainage, paving, street signage/markings/lighting) prepared per City Standards by a licensed (TX) Professional Engineer to Engineering Division in Room 200, Oak Cliff Municipal Center (i.e. 311T/DP). Additions and alterations to the public infrastructure require approval and may require private development contracts with bonds. 51A-8.102 (c); 8.601(b)(4),(5),(6),(7),(8),(9)
13. Detention may be required if the capacity of available outfall is not adequate to carry the developed runoff. Section 51A-8.611(c).
14. Place a note on the final plat stating "Lot-to-Lot drainage will not be allowed without proper City of Dallas Engineering Division approval" 51A 8.611(e)

Right-of way Requirements Conditions:

15. On the final plat, dedicate 28 feet of right-of-way (via fee simple or street easement) from the established centerline of Spruce Valley Lane. *Sections 51A-8.602(c), 51A-8.604(c) and 51A-8.611(c).*

Flood Plain Conditions:

16. On the final plat, determine the 100-year water surface elevation across this addition.
17. On the final plat, dedicate floodway easement, floodway management area or floodway easement (within common area), with the appropriate easement

statement included on the face of the Plat. 51A 8.611(d); DWU Floodplain Management; Drainage Design Manual Addendum V

18. On the final plat, include additional paragraph in Owner's Certificate (pertaining to the floodplain). 51A 8.611(d); DWU Floodplain Management; Drainage Design Manual Addendum V
19. On the final plat, specify minimum fill and minimum finished floor elevations. *Section 51A-8.611(d), Trinity Watershed Management.*
20. On the final plat, show the natural channel set back from the crest of the natural channel. *Section 51A-8.611(d), Trinity Watershed Management.*
21. Prior to submission of the final plat, set floodway monument markers and provide documentation that the monuments have been set. *Section 51A-8.617(d)(1), (2), (3), and (4)*
22. Provide information regarding Fill Permit or Floodplain Alteration Permit if such permit is applied for.

Survey (SPRG) Conditions:

23. Prior to final plat, submit a completed final plat checklist and all supporting documents.
24. On the final plat, show how all adjoining right-of-way was created. Section 51A-8.403(a)(1)(A)(xxii).
25. On the final plat, show distances/width across all adjoining right-of-way. Platting Guidelines.
26. On the final plat, show recording information on all existing easements within 150 feet of the property.
27. On the final plat, show all additions or tracts of land within 150 feet of the property with recording information. Platting Guidelines.
28. On the final plat, need new/different plat name.

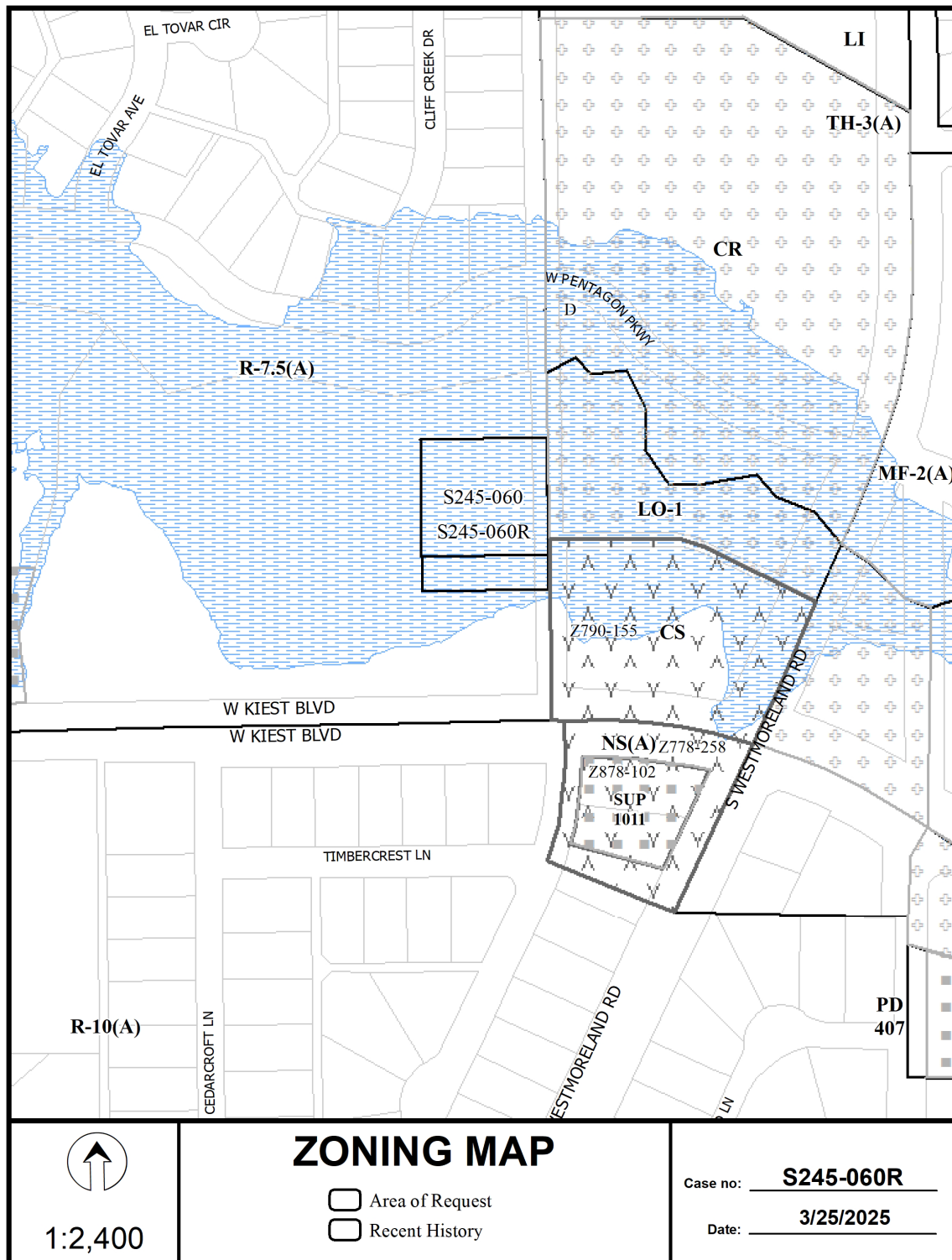
Dallas Water Utilities Conditions:

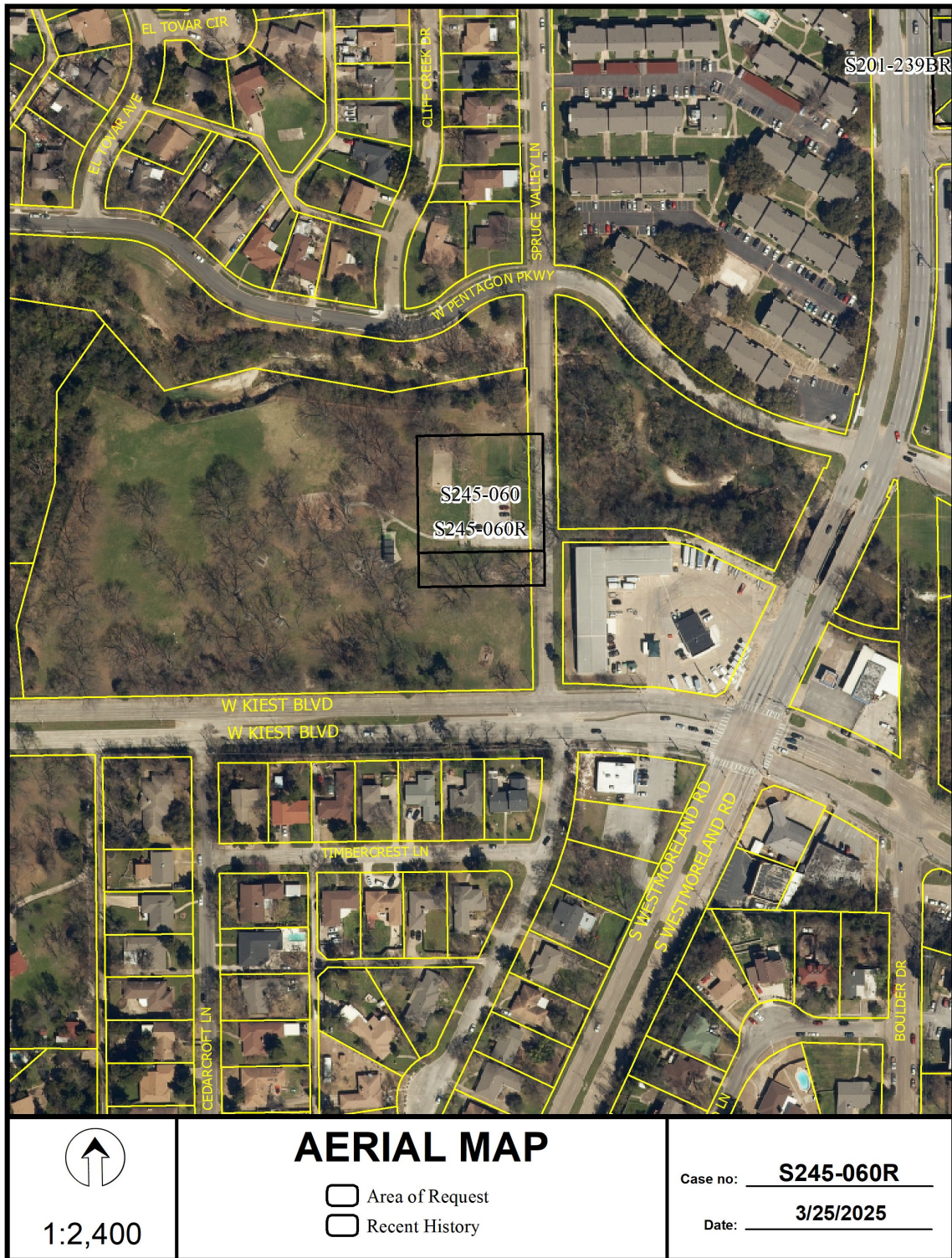
29. Engineer must furnish plans for water and sanitary sewer. Developer must furnish a contract for water and sanitary sewer. Sections 49-60(g)(1) and (2) and 49-62(b), (c), and (f).
30. Additional design information is required for assessment. Site plan must be submitted showing proposed development, building finished floor elevation, development, existing mains – including downstream manhole, and proposed water and wastewater service locations. Submit water/wastewater engineering plans to 320 E. Jefferson Blvd., Room 200, Attention: Water and Wastewater Engineering.
31. Wastewater main improvements is required by Private Development Contract. Submit water/wastewater engineering plans to 320 E. Jefferson Blvd., Room 200, Attention: Water and Wastewater Engineering.

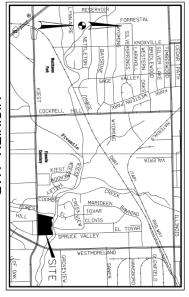
32. Existing and any proposed Water and Wastewater Easements must be shown and/or increased to conform to current design standards. **Notice:** Minimum DWU easement size 20' for one utility and 25' for both water and sewer. Larger diameter or deeper mains may require additional width.

Street Name/ GIS, Lot & Block Conditions:

33. On the final plat, change "W. Pentagon Parkway" to "Pentagon Parkway".
Section 51A-8.403(a)(1)(A)(xii).
34. On the final plat, identify the property as Lot 1 in City Block 1/6979.







S245-060R