

**Plant List:**

Quantity	Species	Size	Comments
<b>Groundcover</b>			
N/A	Crushed Stone	1'-2"	on 6 mil black poly
<b>Shrubs</b>			
45	Korean Boxwood	5 gal.	plant 2' o.c.
8	Red Yucca	5 gal.	
75	Clereya	7 gal.	plant 4' o.c.
<b>Trees</b>			
2	Redbud	3 1/2" cal.	10'-12'
2	Crepe Myrtle	2" cal. Min.	Standard, multi-stem, 12'-15'
2	Live Oak	3 1/2" cal.	10'-12'

All plant beds shall be filled with 1"-2" crushed stone

THIS SITE HAS BEEN DESIGNED AS A XERISCAPE AND ALL PLANTS HAVE BEEN SELECTED FROM THE N. TEXAS SMARTSCAPE PROGRAM

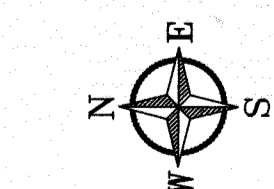
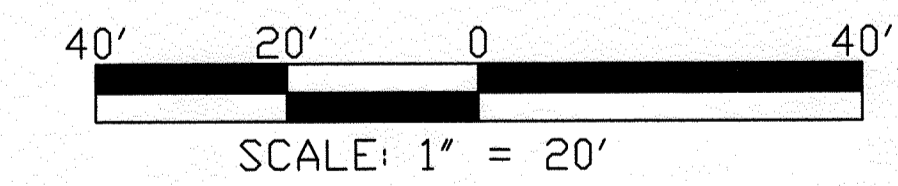
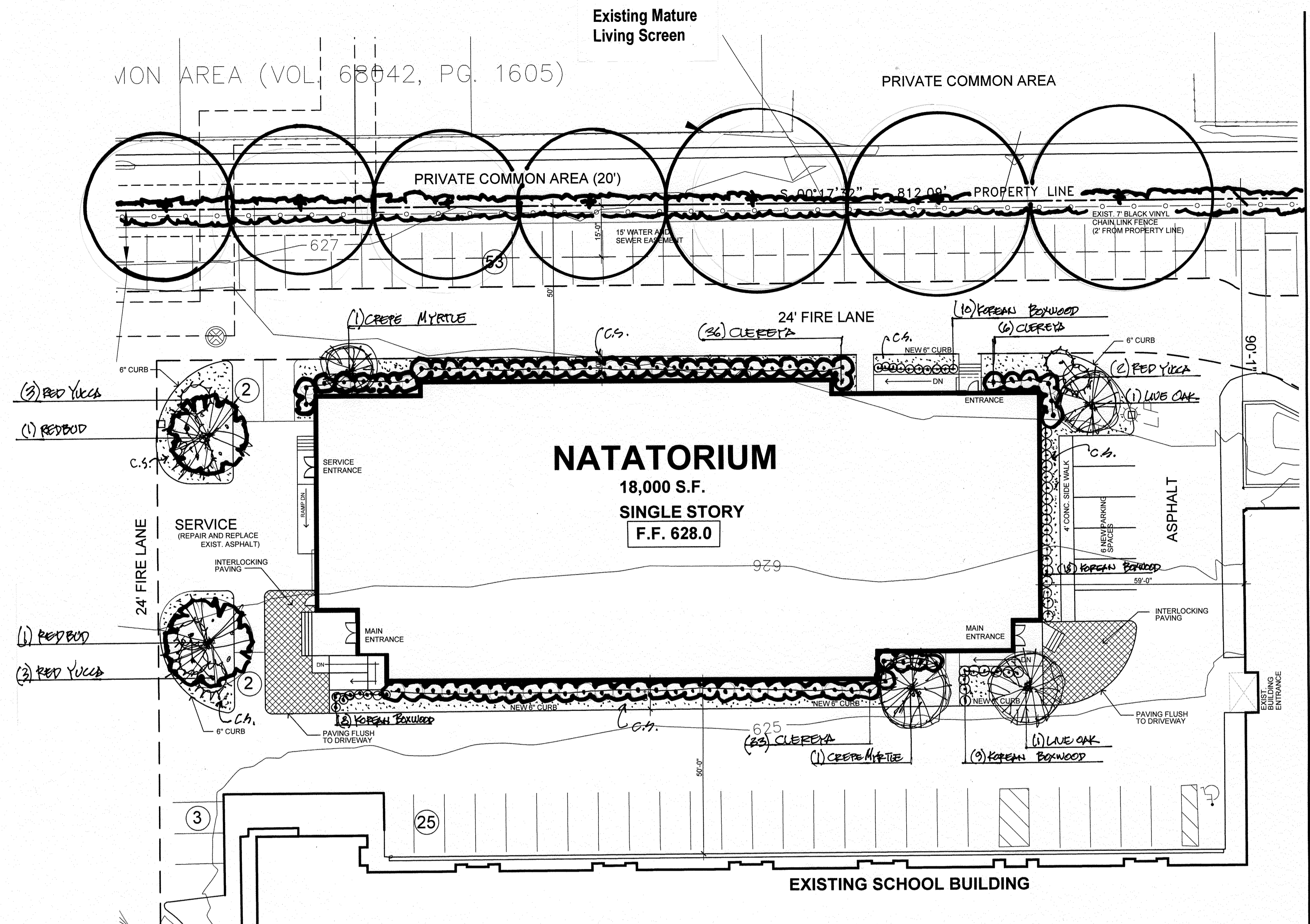
**LANDSCAPE DESIGN STANDARDS:**

- Number of street trees required per \_\_\_' of frontage: N/A
- On-site trees required, N/A: 6 provided
- All trees specified exceed min 3" cal. 3 1/2" specified
- Irrigation system to be designed with drip emitters by registered irrigation specialist and installed to City of Dallas standards;
- All crushed stone beds will be delineated by 4" green or black metal edging;
- All landscaping must be completed before final inspection by the City and the Landscape Plan must be made available on the jobsite.
- SEC. 51A - 10.104: For each large shrub or small tree installation, a min. of 24" of soil depth and 16 sf of surface area (total of 32 cubic feet). For each large tree installation, a min. of 36" soil depth and 25 sf of surface area (total of 75 cubic feet)

**Article X - Design Standards**

- 1) Foundation Planting strip: (487' of 598' frontage = 81.4% (50% req'd.)
- 2) Pedestrian Facilities: Plazas (2)

Tree Mitigation 0



**EXHIBIT B  
LANDSCAPE PLAN**

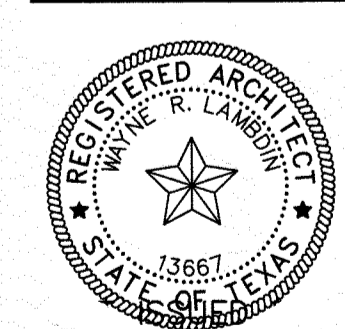
CASE NUMBER: Z223-147(AU)

REVISIONS

14902 Preston Road  
Suite 404  
Dallas, Texas 75254  
214.316.9600  
817.691.6621  
BR 1975



**NATATORIUM**  
PIONEER TECHNOLOGY AND ARTS ACADEMY  
15720 HILLCREST RD  
DALLAS, TEXAS 75248



PROJECT #:  
2022-017

L2.01