



**1 FRONT ELEVATION**  
4300 ROSELAND AVENUE



**\* UPPER FLOOR WINDOW SCHEDULE \***

NUMBER	SIZE & DESCRIPTION	HEAD HEIGHT	REMARKS
W 201	3'-3" x 6'-6" FIXED	8'-0" A.F.F.	N/A
W 202	15'-8" x 6'-6" CASEMENTS	8'-0" A.F.F.	N/A
W 203	2'-8" x 6'-6" FIXED	8'-0" A.F.F.	N/A
W 204	2'-8" x 6'-6" FIXED	8'-0" A.F.F.	N/A
W 205	5'-8" x 8'-0" CASEMENTS	8'-0" A.F.F.	N/A
W 206	4'-0" x 5'-0" CASEMENTS	8'-0" A.F.F.	N/A
W 207	4'-0" x 8'-8" FIXED	21'-2" A.F.F.	N/A
W 208	4'-0" x 8'-8" FIXED	21'-2" A.F.F.	N/A
W 209	12'-2" x 6'-6" FIXED	8'-0" A.F.F.	N/A
W 210	4'-0" x 5'-0" CASEMENTS	8'-0" A.F.F.	N/A
W 211	3'-3" x 4'-8" FIXED	8'-0" A.F.F.	N/A
W 212	15'-8" x 6'-6" CASEMENTS	8'-0" A.F.F.	N/A
W 213	2'-8" x 6'-6" FIXED	8'-0" A.F.F.	N/A
W 214	2'-8" x 6'-6" FIXED	8'-0" A.F.F.	N/A
W 215	5'-8" x 6'-6" CASEMENTS	8'-0" A.F.F.	N/A
W 216	4'-0" x 5'-0" CASEMENTS	8'-0" A.F.F.	N/A
W 217	4'-0" x 8'-8" FIXED	21'-2" A.F.F.	N/A
W 218	4'-0" x 8'-8" FIXED	21'-2" A.F.F.	N/A

W 301	3'-0" x 3'-2" FIXED	SILL @ 8'-8" A.F.F.	FIXED SPECIALTY SHAPE
W 302	3'-0" x 6'-2" FIXED	SILL @ 8'-8" A.F.F.	FIXED SPECIALTY SHAPE
W 303	3'-0" x 6'-2" FIXED	SILL @ 8'-8" A.F.F.	FIXED SPECIALTY SHAPE
W 304	3'-0" x 3'-2" FIXED	SILL @ 8'-8" A.F.F.	FIXED SPECIALTY SHAPE
W 305	3'-0" x 6'-2" FIXED	SILL @ 8'-8" A.F.F.	FIXED SPECIALTY SHAPE
W 306	3'-0" x 6'-2" FIXED	SILL @ 8'-8" A.F.F.	FIXED SPECIALTY SHAPE
W 307	3'-0" x 6'-2" FIXED	SILL @ 8'-8" A.F.F.	FIXED SPECIALTY SHAPE
W 308	3'-0" x 3'-2" FIXED	SILL @ 8'-8" A.F.F.	FIXED SPECIALTY SHAPE
W 309	4'-0" x 4'-3" FIXED	SILL @ 21'-4" A.F.F.	FIXED SPECIALTY SHAPE
W 310	4'-0" x 4'-3" FIXED	SILL @ 21'-4" A.F.F.	FIXED SPECIALTY SHAPE
W 311	4'-0" x 4'-3" FIXED	SILL @ 21'-4" A.F.F.	FIXED SPECIALTY SHAPE
W 312	4'-0" x 4'-3" FIXED	SILL @ 21'-4" A.F.F.	FIXED SPECIALTY SHAPE

**\* EXTERIOR DOOR SCHEDULE \***

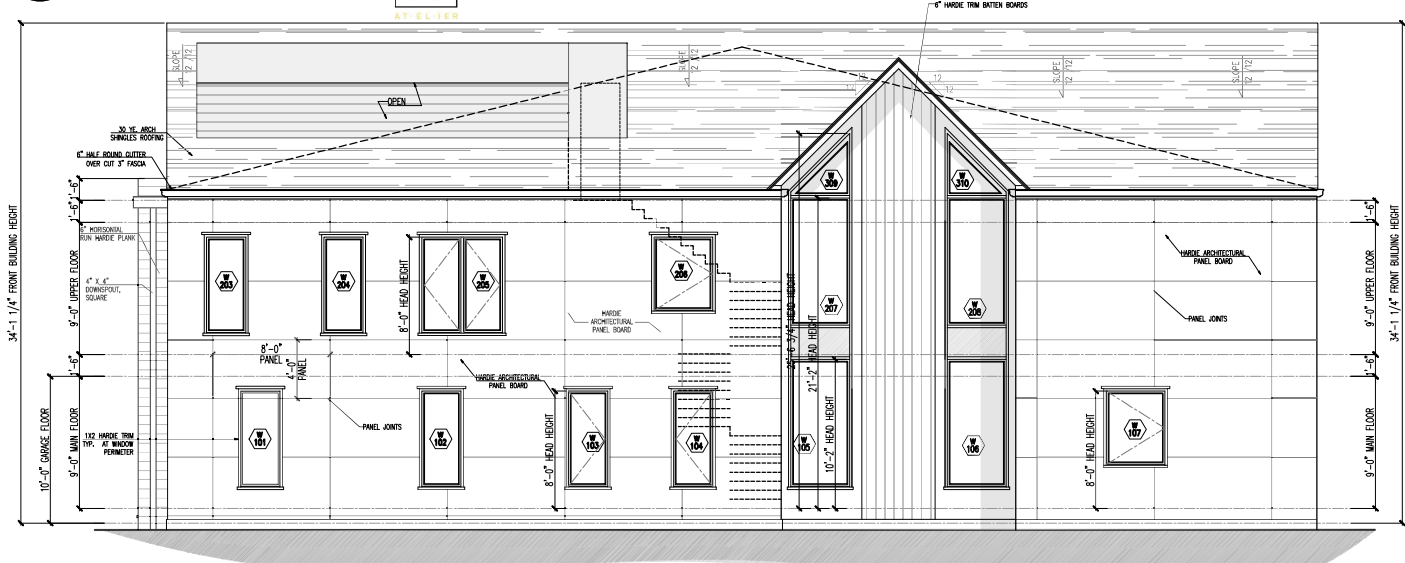
NUMBER	SIZE & DESCRIPTION	MATERIAL	REMARKS
ED 101	4'-0" x 8'-0" PIVOT FRONT DOOR	WOOD/TEMP. GLASS	N/A
ED 102	16'-0" x 9'-0" OVERHEAD GARAGE DOOR	WOOD	N/A
ED 103	(4) 3'-0" x 8'-0" SLIDING PANEL DOORS	ALUMINUM/TEMP. GLASS	N/A
ED 104	(4) 3'-0" x 8'-0" SLIDING PANEL DOORS	ALUMINUM/TEMP. GLASS	N/A
ED 105	12'-0" x 9'-0" OVERHEAD GARAGE DOOR	WOOD	N/A
ED 106	4'-0" x 8'-0" PIVOT FRONT DOOR	WOOD/TEMP. GLASS	N/A

ED 301	2'-8" x 8'-0" PIVOT FRONT DOOR	WOOD	N/A
ED 302	3'-0" x 8'-0" PIVOT FRONT DOOR	WOOD	N/A
ED 303	2'-8" x 8'-0" PIVOT FRONT DOOR	WOOD	N/A
ED 304	3'-0" x 8'-0" PIVOT FRONT DOOR	WOOD	N/A

**\* MAIN FLOOR WINDOW SCHEDULE \***

NUMBER	SIZE & DESCRIPTION	HEAD HEIGHT	REMARKS
W 101	2'-8" x 6'-6" FIXED	9'-0" A.F.F. GARAGE FLR. LEVEL	N/A
W 102	2'-8" x 6'-6" FIXED	9'-0" A.F.F.	N/A
W 103	2'-8" x 6'-6" CASEMENT	8'-0" A.F.F.	N/A
W 104	2'-8" x 6'-6" CASEMENT	8'-0" A.F.F.	N/A
W 105	4'-0" x 8'-8" FIXED	10'-2" A.F.F.	N/A
W 106	4'-0" x 8'-8" FIXED	10'-2" A.F.F.	N/A
W 107	4'-0" x 5'-0" CASEMENT	8'-0" A.F.F.	N/A
W 108	2'-8" x 6'-6" FIXED	9'-0" A.F.F. GARAGE FLR. LEVEL	N/A
W 109	2'-8" x 6'-6" FIXED	9'-0" A.F.F. GARAGE FLR. LEVEL	N/A
W 110	2'-8" x 6'-6" CASEMENT	8'-0" A.F.F.	N/A
W 111	2'-8" x 6'-6" CASEMENT	8'-0" A.F.F.	N/A
W 112	4'-0" x 8'-8" FIXED	10'-2" A.F.F.	N/A
W 113	4'-0" x 8'-8" FIXED	10'-2" A.F.F.	N/A
W 114	4'-0" x 5'-0" CASEMENT	8'-0" A.F.F.	N/A



**2 RIGHT ELEVATION**  
4300 ROSELAND AVENUE



**TAYO ATELIER**  
ARCHITECTURE  
1400 W. WOODLAND AVENUE, SUITE 100  
DALLAS, TEXAS 75204  
PH: 214.420.1234  
WWW.TAYOATELIER.COM

CONSULTANTS

**PROJECT:**

**PRIVATE RESIDENCE**  
4300 ROSELAND AVENUE  
DALLAS TEXAS, 75204

REVISED PER COMMENTS FROM THE CLIENT. THIS SET OF DRAWINGS IS THE PROPERTY OF TAYO ATELIER. IT IS TO BE USED ONLY FOR THE PROJECT AND SITE SPECIFICALLY IDENTIFIED HEREIN. IT IS NOT TO BE REPRODUCED, COPIED, OR TRANSMITTED IN ANY FORM OR BY ANY MEANS, ELECTRONIC OR MECHANICAL, INCLUDING PHOTOCOPYING, RECORDING, OR BY ANY INFORMATION STORAGE AND RETRIEVAL SYSTEM, WITHOUT THE WRITTEN PERMISSION OF TAYO ATELIER. THE USER OF THIS SET OF DRAWINGS AGREES TO HOLD TAYO ATELIER HARMLESS FROM AND AGAINST ALL LIABILITY, INCLUDING REASONABLE ATTORNEY'S FEES, ARISING FROM OR OUT OF SUCH USE.

NO.	REVISION/ISSUE	DATE
01	REVISION SET 4-4-2024	
02	MBP SET 4-16-2024	

PROFESSIONAL SEAL:

ARCHITECTURE SET  
RELEASED FOR CONSTRUCTION

NO. 1111  
DATE: APRIL 16, 2024  
SHEET: 1 OF 2  
PROJECT: A-400