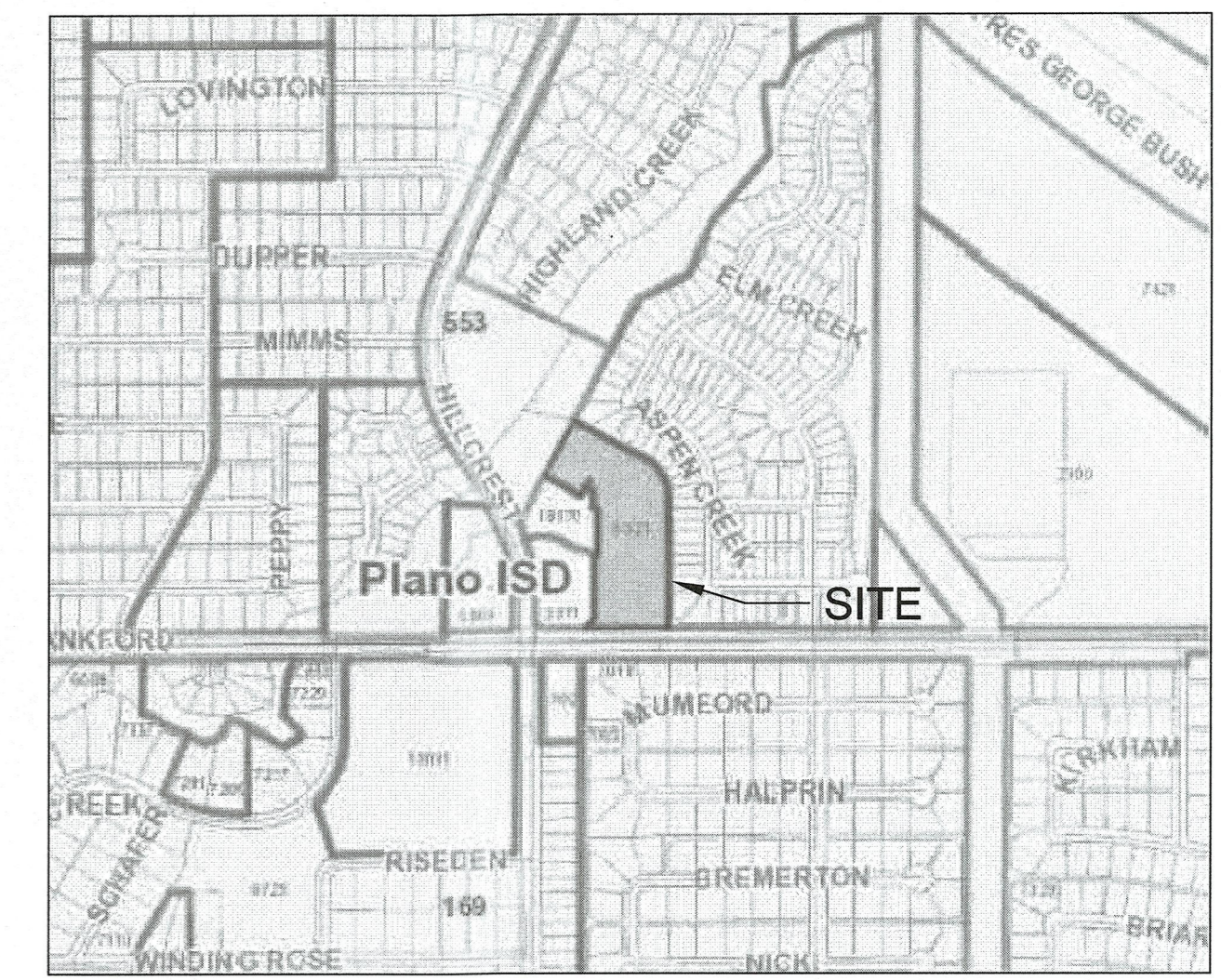
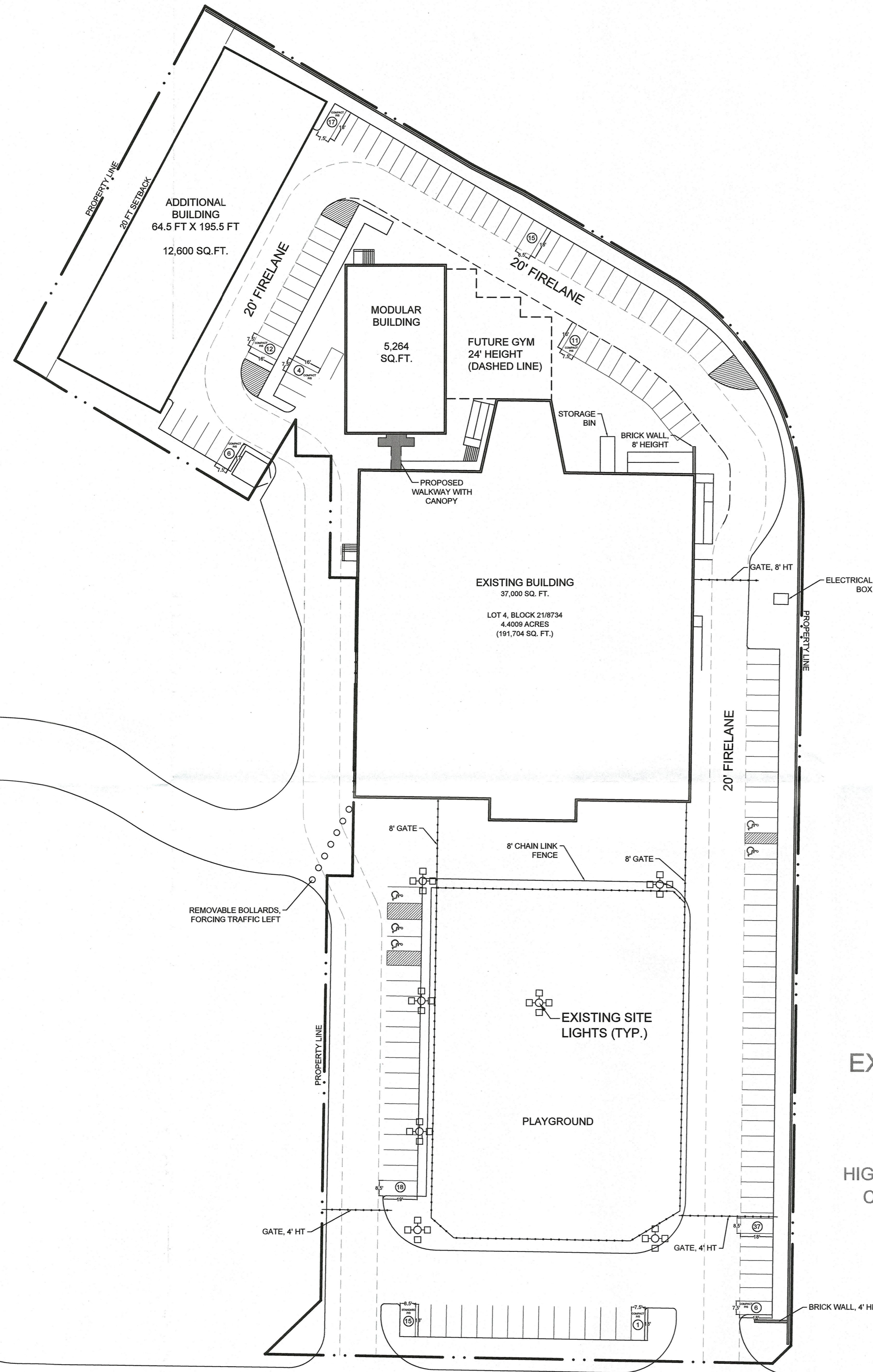


EXISTING SINGLE FAMILY

BLOCK 8734
 RLH INVESTMENTS, INC., TRUSTEE
 C.C.C.F. NO. 93-0114595, L.R.C.C.T.



VICINITY MAP



PD 173 Tract F SUP 1505

	EXISTING (WITH MODULAR)		PHASE 2 (WITH GYM/REMOVE MODULAR)		PHASE 3 (WITH ADDITIONAL BLDG.)	
FLOOR AREA	42,264 SQ. FT.		46,100 SQ. FT.		58,700 SQ. FT.	
LOT COVERAGE	22.05%		24.05%		30.62%	
4.4 ACRE LOT	191,704 SQ. FT.		191,704 SQ. FT.		191,704 SQ. FT.	
BLDG. HEIGHT/STORIES	24'/ 1 STORY		24'/ 1 STORY		24'/ 1 STORY	
CLASS ROOM BREAKDOWN						
GRADES	CLASS QTY.	REQ. PARKING	CLASS QTY.	REQ. PARKING	CLASS QTY. / AREA	REQ. PARKING
PRESCHOOL TO ELEMENTARY 5TH	22	33	22	33	32	48
MIDDLE SCHOOL (6TH TO 8TH)	18	63	18	63	12	42
HIGH SCHOOL (9TH TO 12TH)	7	67	7	67	5	48
TOTAL	47	163	47	163	49	138
PARKING						
REQUIRED SPACES	163 SPACES		163 SPACES		138 SPACES	
PROVIDED SPACES	184 SPACES		184 SPACES		142 SPACES	

EXISTING SINGLE FAMILY

BLOCK 25/8734
 HIGHLAND CREEK MANOR
 CABINET 1, PAGE 501.

HILLCREST ROAD

FRANKFORD ROAD

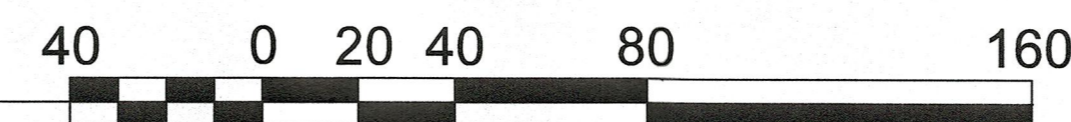
2022-2023



1

SUP SITE PLAN

SCALE: 1" = 40'-0"



32351



03/22/2022

PROJECT NUMBER

CASE NUMBER

BALDWIN ASSOCIATES

3904 Elm Street, Suite B
 Dallas, Texas 75226
 MOBILE: 214.729.7949
 OFFICE: 214.824.7949
 rob@baldwinplanning.com

Baldwin Associates

TORAH DAY SCHOOL
 6921 Frankford Rd
 CITY OF DALLAS, TEXAS

SUP No. 1505 Site Plan
 Approved
 City Plan Commission
 October 5, 2022