



Pallet®

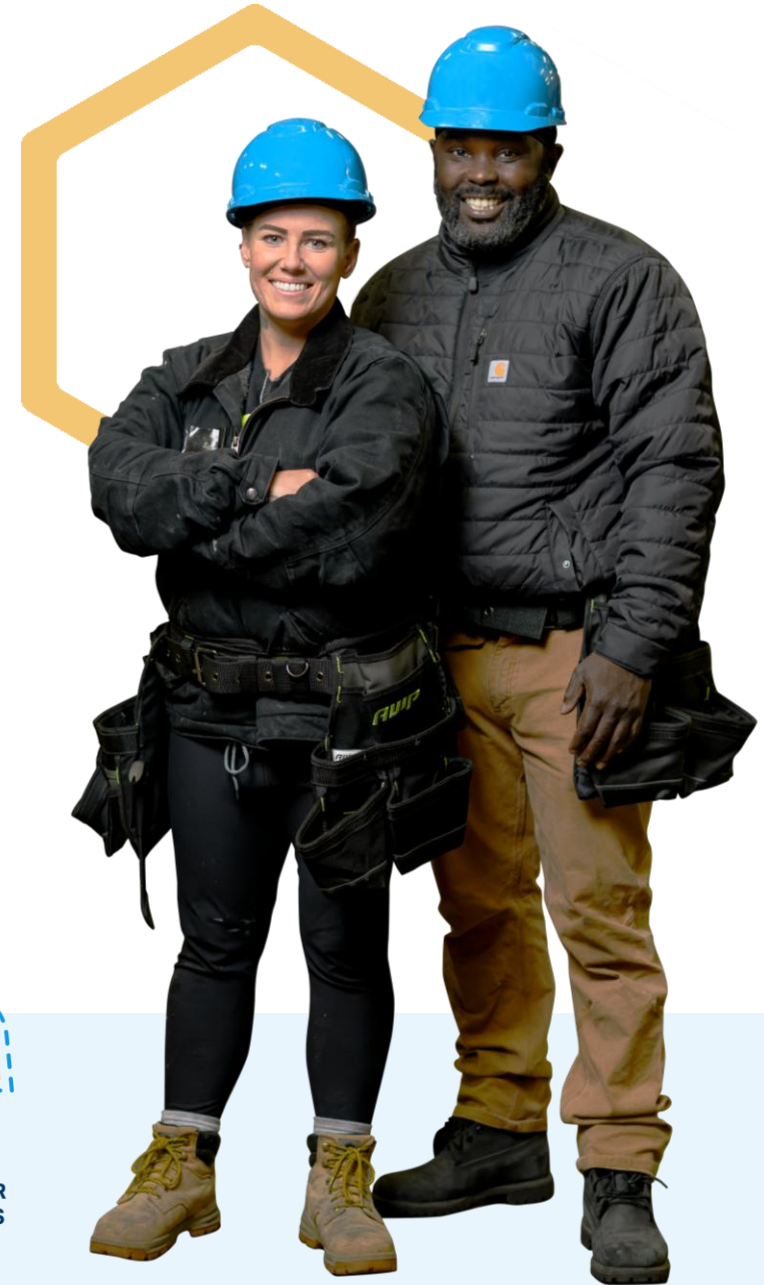
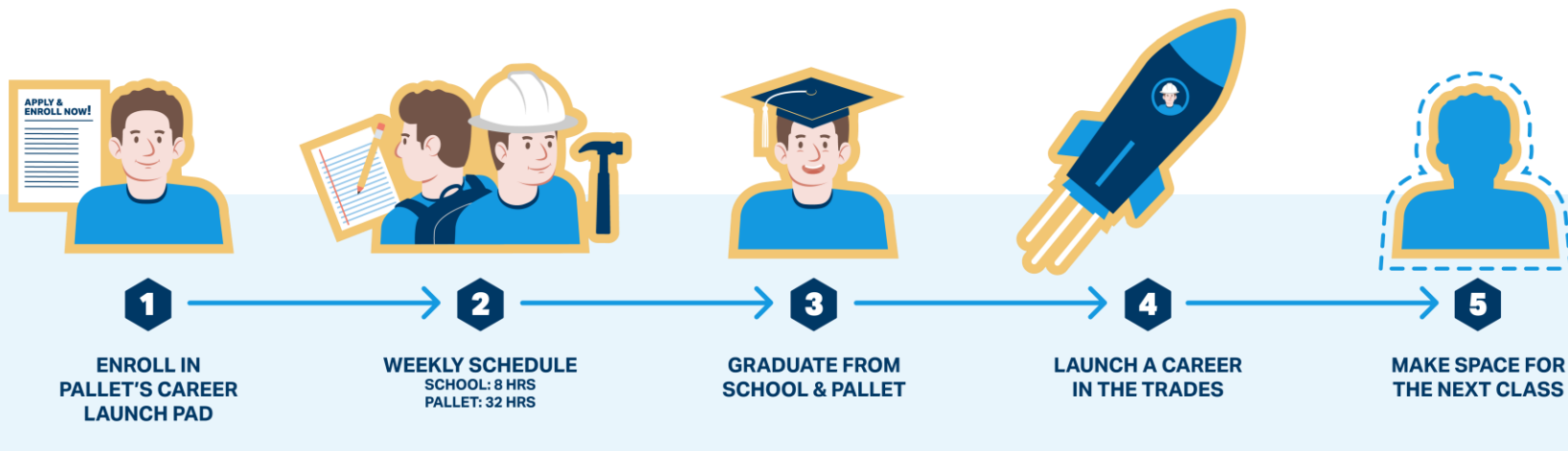
The Leader in Non-Congregate
Emergency Shelter



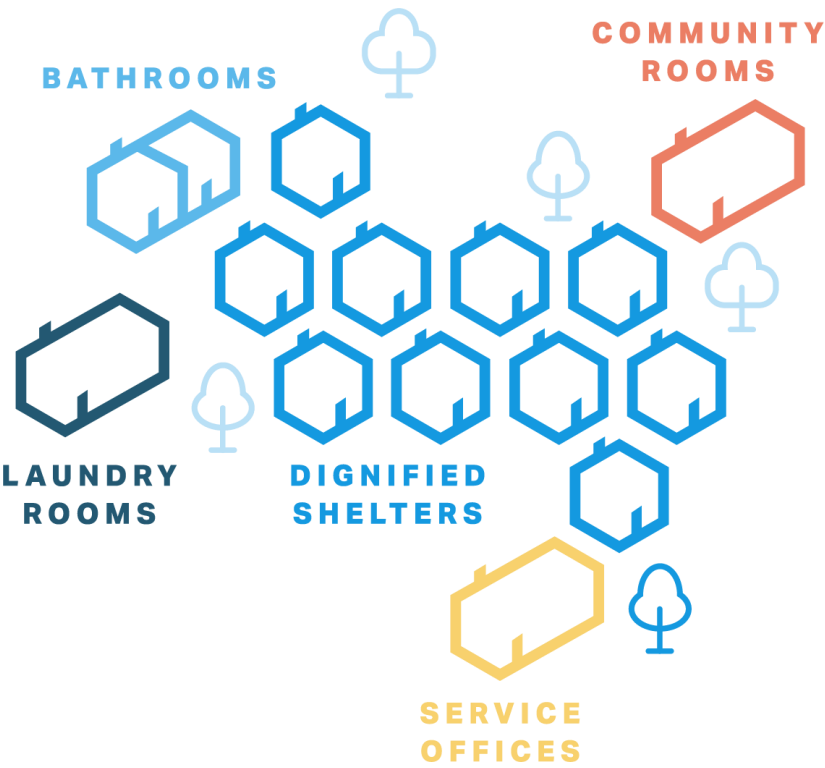


We Believe People's Futures Should Be **Defined by Their Potential, Not Their Past.**

We founded Pallet's Career Launch PAD (Program for Apprenticeship Development) to provide our fair chance employees with essential skills for a career in the trades—offering a path for people to build their futures.

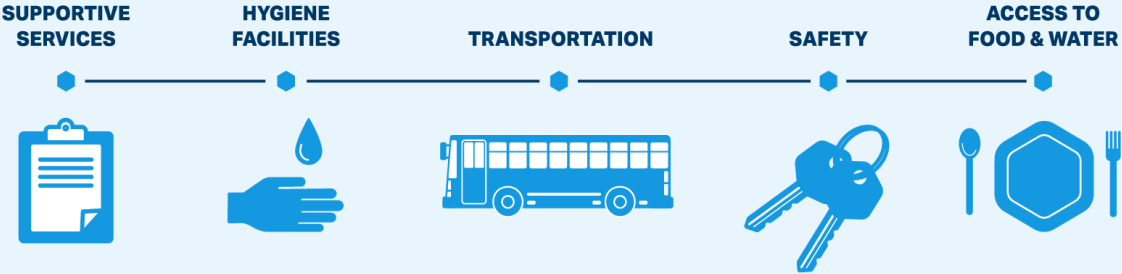


VILLAGE MODEL



INHERENT AND ABSOLUTE DIGNITY

Pallet's Dignity Standards



Village Stats

5,400+

SHELTERS BUILT

135+

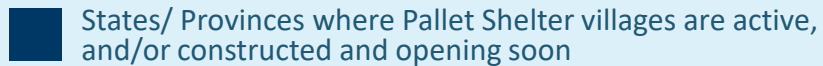
VILLAGES BUILT

29 / 3

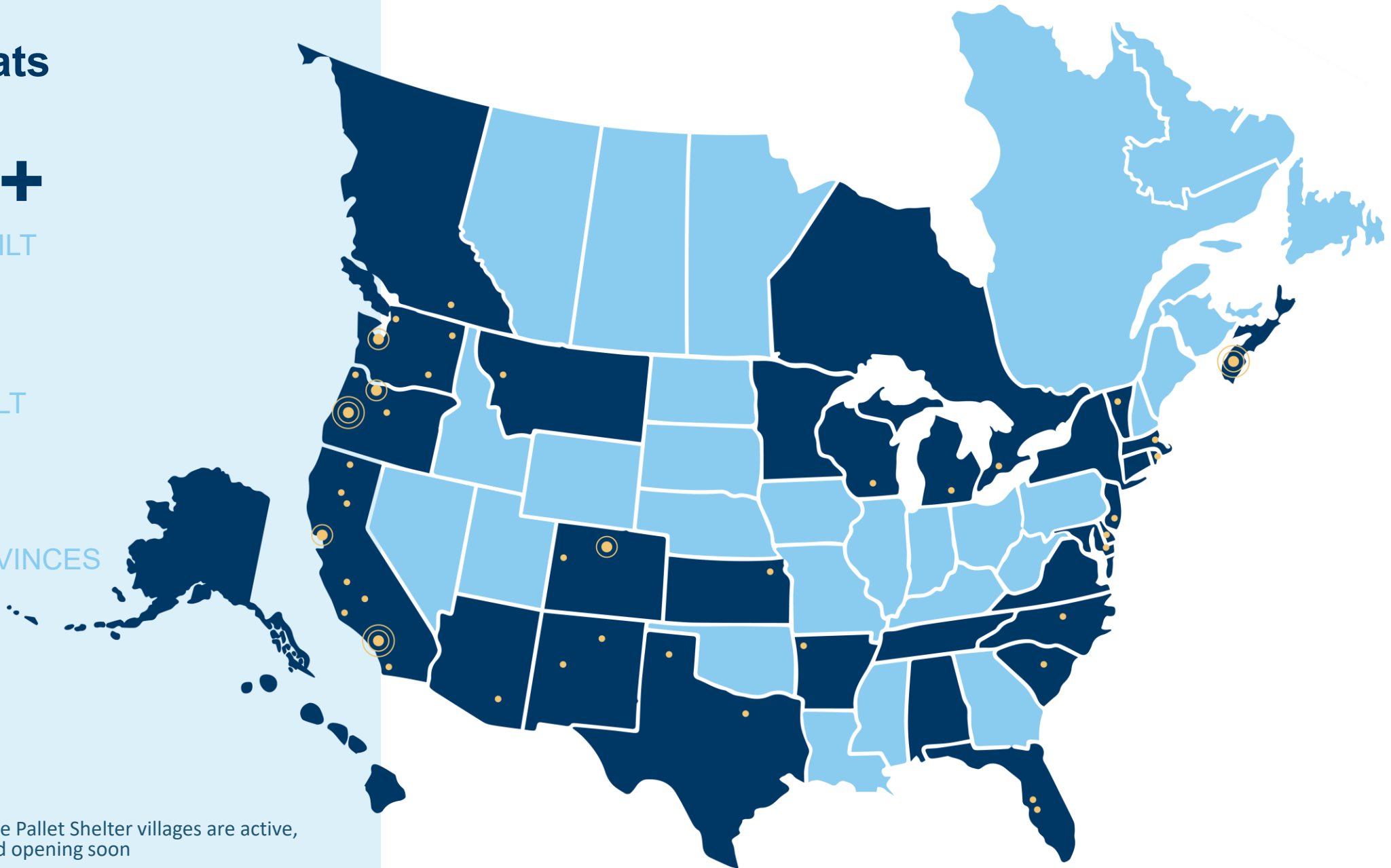
STATES / PROVINCES

120

CITIES



*Map and village stats as of August 2025



Communities are Safer When People are Housed

VANCOUVER

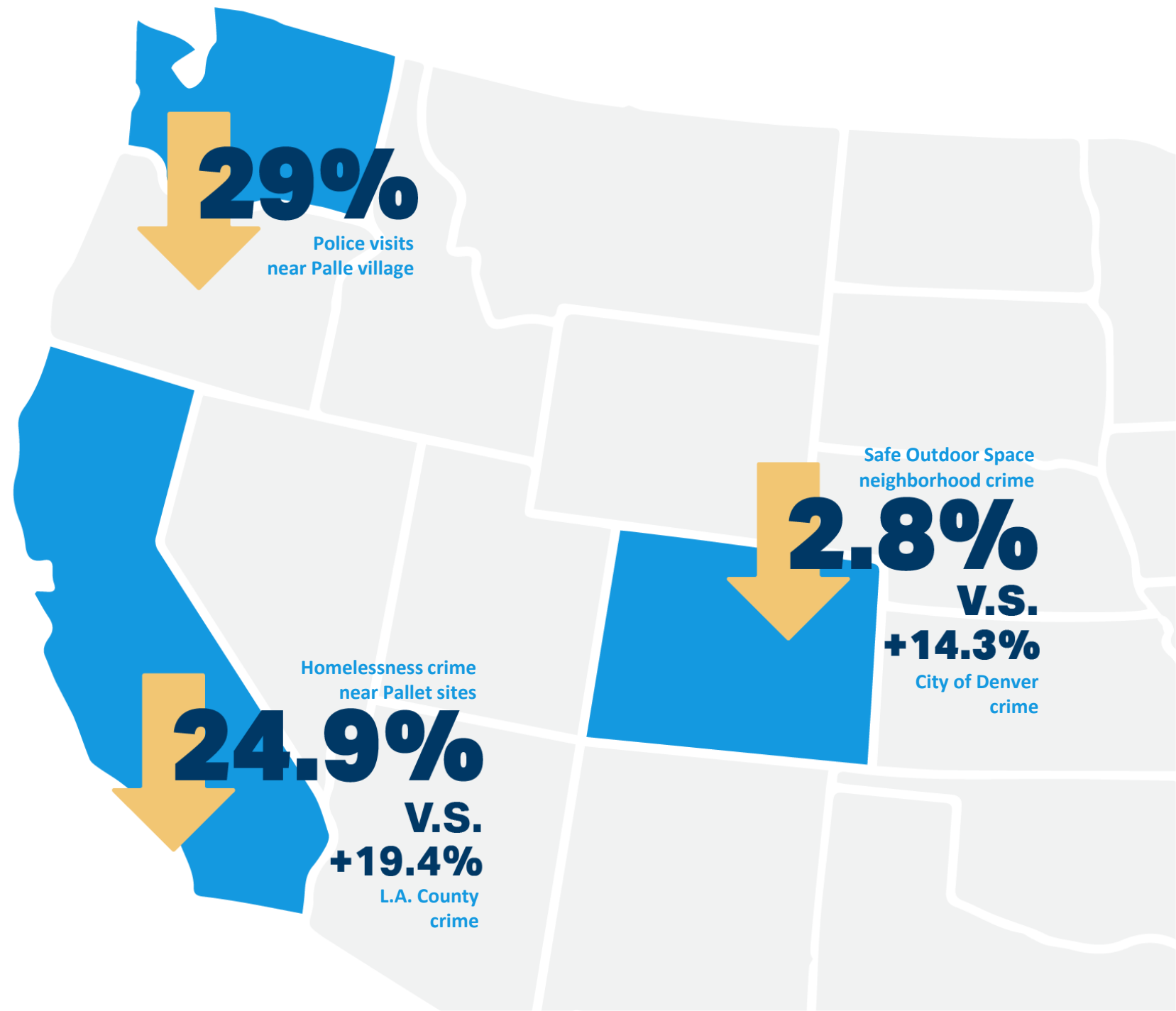
The City of Vancouver opened its first Pallet Safe Stay Community in 2021. The following year, the number of police visits within a 500 ft radius of the village dropped nearly 30%.

DENVER

The number of crimes reported in the city of Denver rose from 2020-2021. Yet, in the six Safe Outdoor Space neighborhoods that hosted temporary homes for unhoused people, crime went down.

LOS ANGELES

While the crime rate rose significantly in L.A. County from 2020-2021, the areas within a quarter mile of 10 Pallet villages saw on average a nearly 25% decrease in crime.



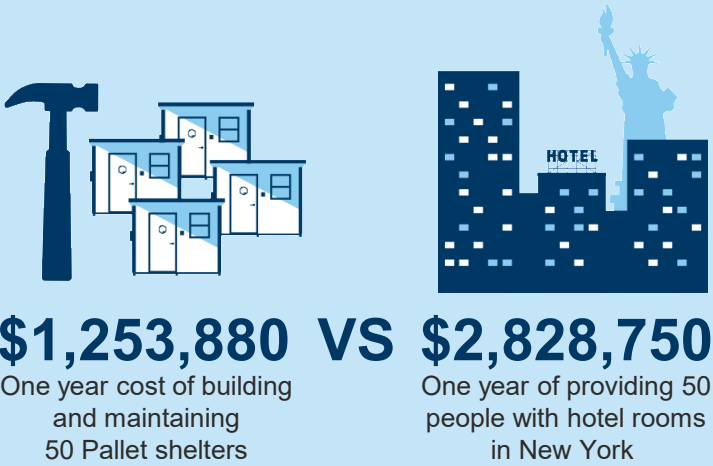
Cost-Savings of Pallet Shelters vs. Conventional Models

Hotels vs. Temporary Shelter Costs

Even though using hotel rooms are cost-prohibitive and can be less effective than dedicated non-congregate shelters, it remains a conventional model.

Data shows that hotels are more than 2x the cost of operating a Pallet shelter village year over year.

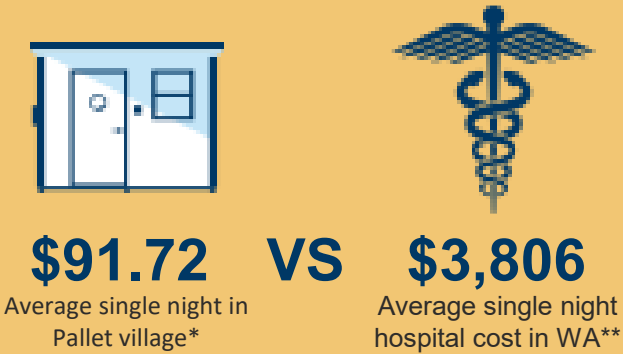
*Source: Costs of NYC Migrant Hotel Housing, Oct. 2024



Health Care Costs

When unsheltered people don't have reliable access to preventative and primary care, costly emergency medical services are overused, and hospital systems can be overwhelmed.

*Estimate based on a 40-person capacity Pallet village in WA
**Source: Emergency Rooms at the Epicenter, Jan. 2024

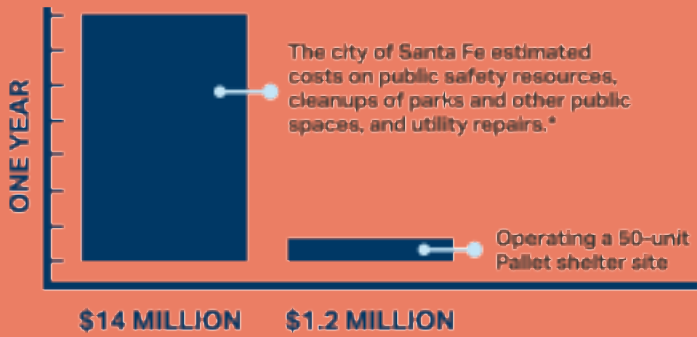


Reactive Costs

When communities lack shelter programs, communities incur steep costs for reactive measures related to the effects of impacted populations living in public spaces.

Implementing a Pallet shelter village is vastly less expensive, all while connecting residents to much-needed services and effectively addressing the homelessness crisis.

*Source: City of Santa Fe Resolution No. 2023-16, April 2023



Product Line



S2 Sleeper (70 sq.ft.)



S2 Sleeper (120 sq.ft.)



S2 EnSuite



Two-Stall Hygiene



Accessible + Half Bath Hygiene



Laundry



Community Room 2



Dallas – Items To Consider

Land & Siting

Zillow Tool and Pallet Site Layouts – leverage of existing vacant resources

Community Adoption Tools – data and talking points

Code Compliance

Regulatory Pathways – TDLR Letter

Temporary Zoning/Land Use – best practices and creative strategies

Funding

HUD - focus on services & accountability programming

Local funding subsidy partners for capital costs

Service Provision & Throughput

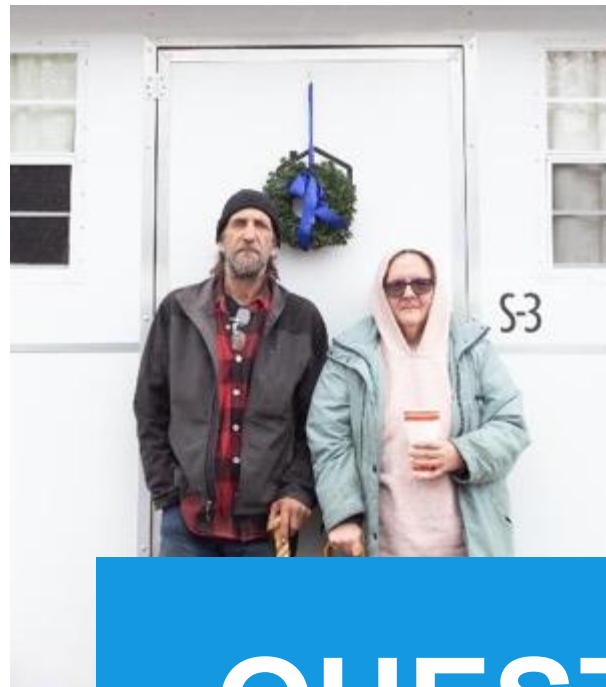
Public Private Partnerships

Future Housing Supply

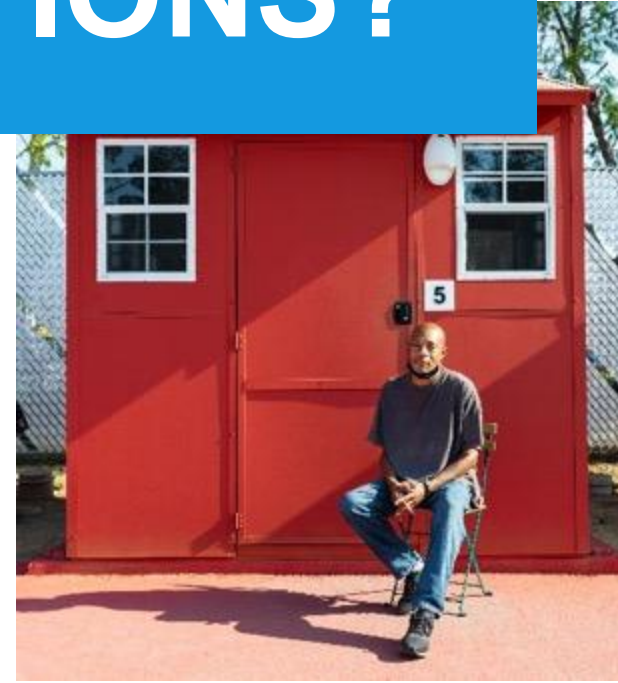
Workforce Model Expansion

Pallet Production Line Move

Product made for Texans, by Texans, in Texas



QUESTIONS?



PALLET PRODUCT



S2 SLEEPER (70 SQ. FT.)



S2 SLEEPER (120 SQ. FT.)



S2 SLEEPER ENSUITE



TWO-STALL HYGIENE



LAUNDRY UNIT



COMMUNITY ROOM 2









BOSTON, MA

Featured Project

SIZE:
18 Shelters

POPULATION SERVED:
Local unhoused neighbors
struggling with substance abuse

FUNDING:
State funding

IMPACT DATA POINTS:

- 24-hour healthcare provided
- Medication assisted treatment
- 50% of occupants served in the first 3 months transition to permanent housing
- Most residents moving from the Mass and Cass encampment



City officials say a recent survey of roughly 140 people who were sleeping in the 77 tents near the intersection showed that more than 95 percent said they would be willing to leave their tents for [Pallet] housing, if it were available."

BOSTON GLOBE



VANCOUVER, WA

Featured Project

SIZE:
29 Shelters

POPULATION SERVED:
Local unhoused neighbors,
couples and pets

FUNDING:
City funds

IMPACT DATA POINTS:

- 46 people served
 - 14 transitioned to permanent housing
 - 10 currently working to obtain housing
 - Rest have completed housing assessment
- 30% reduction calls and officer related visits since opening
- Fire and EMS related call dropped from 15.6% to 6% of total area



It's an opportunity for people to get their lives together. If they were using for whatever reason — for trauma, to stay awake — they have an opportunity to clean up here with support, instead of being kicked out of wherever they were.”

JAMIE SPINELLI, VANCOUVER'S HOMELESS
RESOURCES COORDINATOR



COLUMBIA, SC

Featured Project

SIZE:
50

POPULATION SERVED:
Local unhoused neighbors

FUNDING:
American Rescue Plan Act + allocated funds to manage the existing facility

IMPACT DATA POINTS:

- Opened in 72 days from email to habitation



For me it feels like a real win to see that we can do something that so many people have said ‘Oh, there's no way you can get that done’.

COLUMBIA AT-LARGE
COUNCIL WOMAN DR. ADITI BUSSELLS

