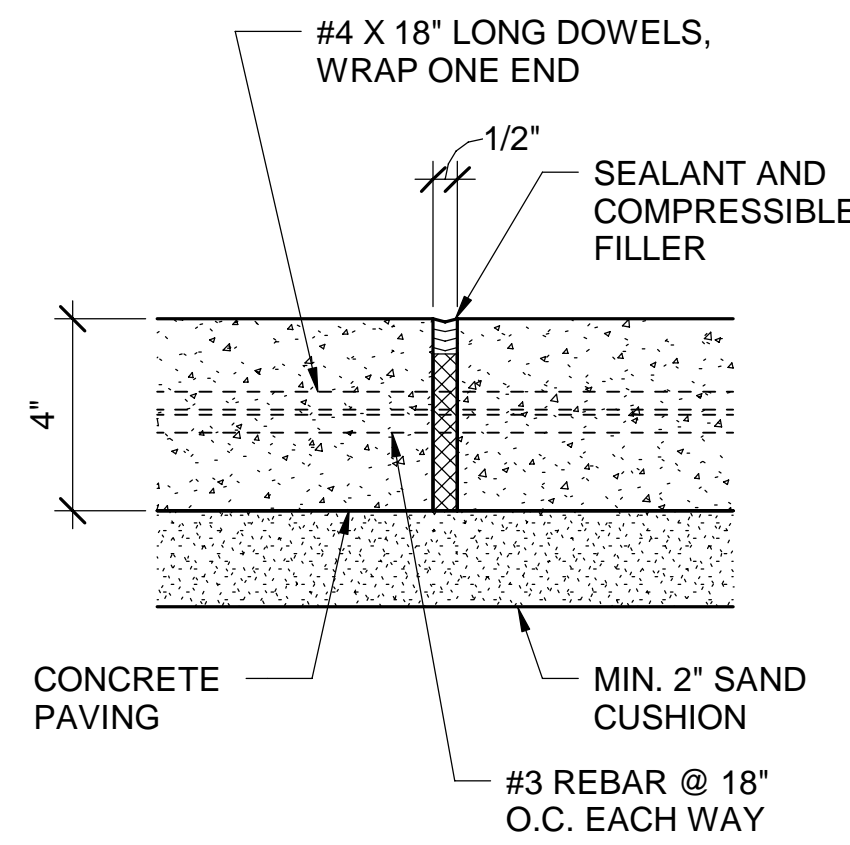
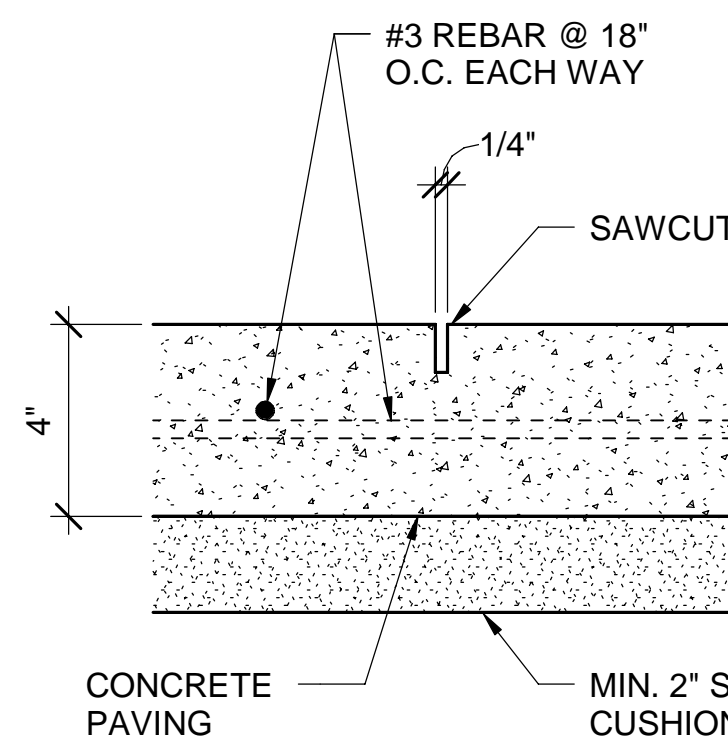


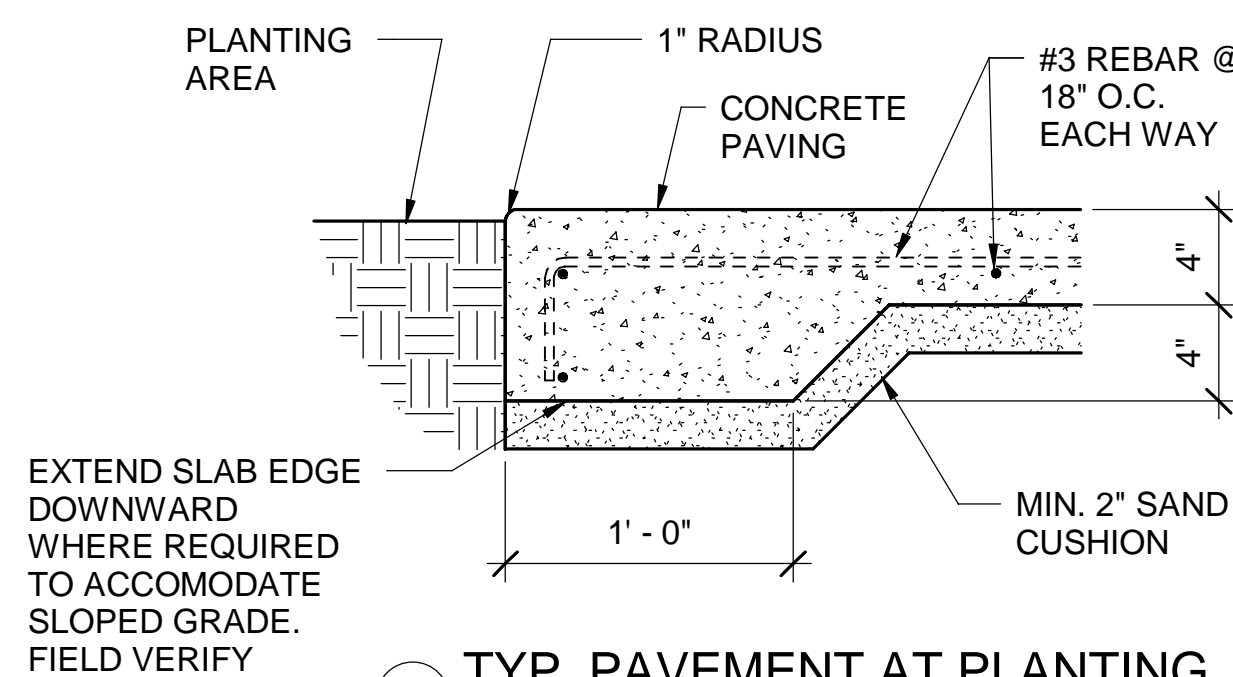
7 HC PARKING SIGN
1" = 1'-0"



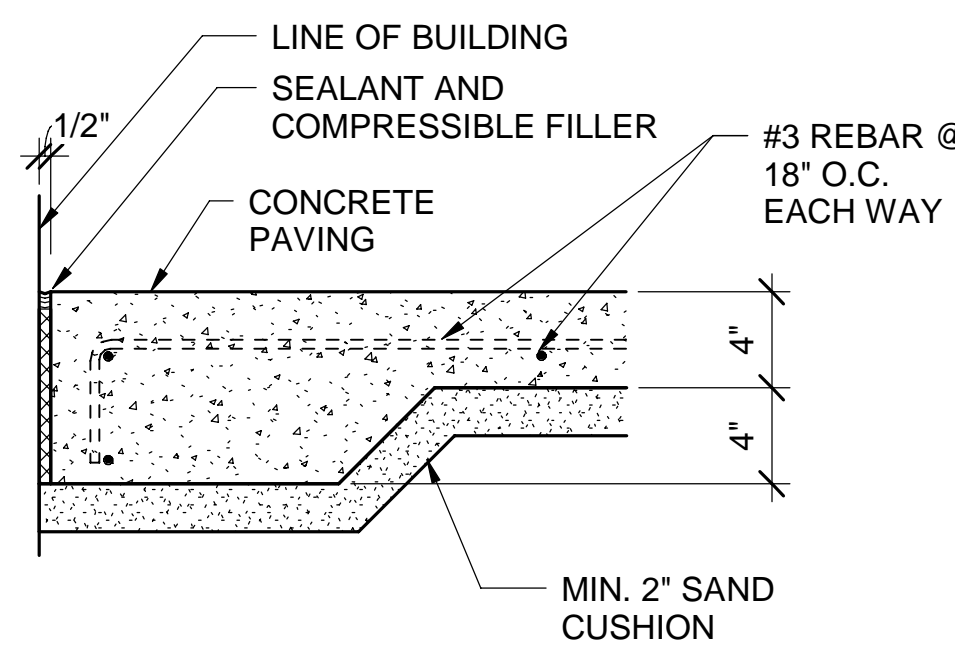
6 TYP. PAVEMENT EXPANSION JOINT
3" = 1'-0"



4 TYP. PAVEMENT CONTROL JOINT
3" = 1'-0"



5 TYP. PAVEMENT AT PLANTING
1 1/2" = 1'-0"



3 TYP. PAVEMENT AT BUILDING
1 1/2" = 1'-0"

PARKING ANALYSIS

CLASSIFICATION
THIS FACILITY WILL BE USED PRIMARILY AS A CHILD CARE FACILITY FOR A SYNAGOGUE DURING THE WEEK AND USED FOR RELIGIOUS SERVICES DURING SATURDAYS AND HOLIDAYS. THE TOTAL FACILITY HAS 4,988 S.F. THE SANCTUARY HAS AN AREA OF 1064 S.F. AND IT WILL NOT HAVE FIXED SEATING. THE CHILD CARE FACILITY WILL HAVE AN AREA OF 3,924 S.F.

SECTION 51A-4.204 OF THE CITY OF DALLAS ZONING CODE REQUIRES:

CHURCH FACILITY: ONE SPACE PER 333 SQUARE FEET IN FLOOR AREA IF A CHURCH HAS LESS THAN 5,000 SQUARE FEET OF FLOOR AREA AND IS LOCATED IN A SHOPPING CENTER WITH MORE THAN 20,000 SQUARE FEET IN FLOOR AREA. IF PORTIONS OF SEATING AREAS IN THE SANCTUARY OR AUDITORIUM ARE NOT EQUIPPED WITH FIXED SEATS, BENCHES, OR PEWS, THE PARKING REQUIREMENT FOR THOSE PORTIONS IS ONE SPACE FOR EACH 28 SQUARE FEET OF FLOOR AREA.

CHILD CARE FACILITY: ONE SPACE PER 500 S.F. OF FLOOR AREA.

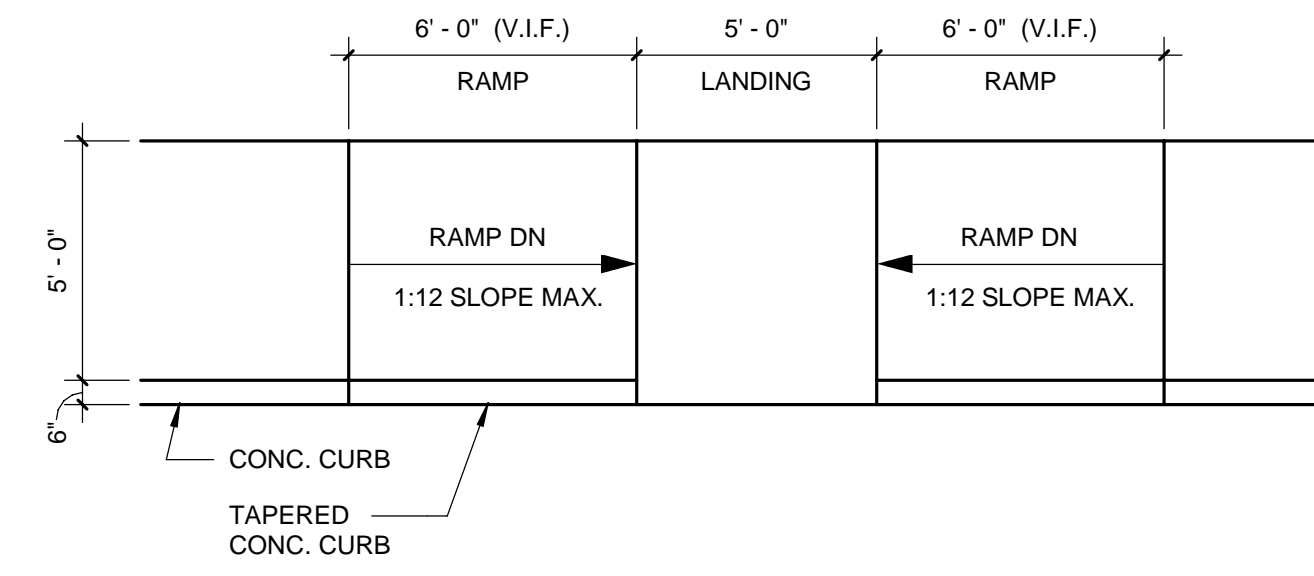
PARKING SPACES REQUIREMENTS

WORSHIP AREA: 1,064 SF
PARKING REQUIRED: 4 SPACES
PARKING PROVIDED: 7 SPACES

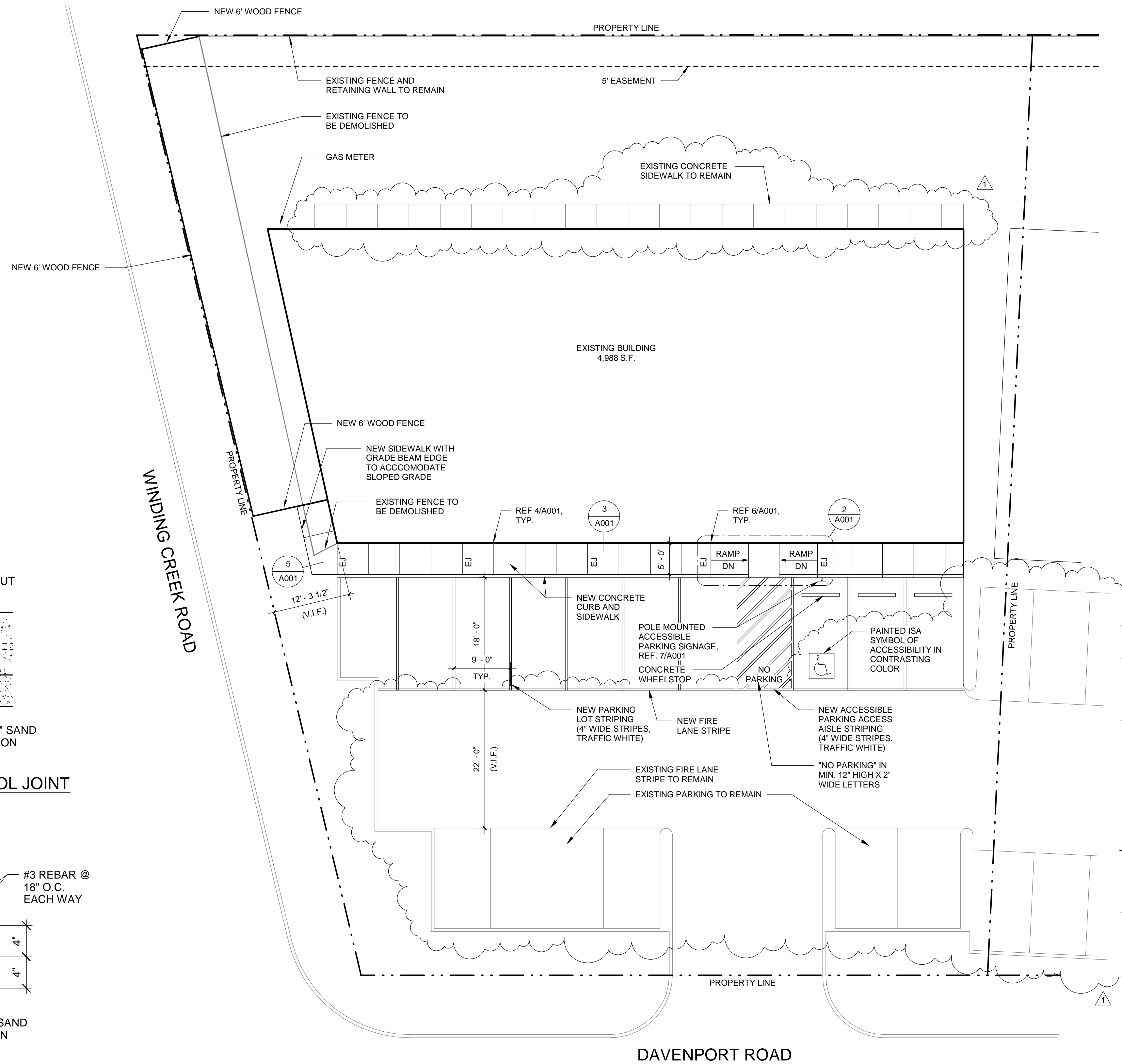
CHILD CARE FACILITY AREA: 3,924 SF
PARKING REQUIRED: 8 SPACES
PARKING PROVIDED: 10 SPACES

TOTAL PARKING REQUIRED: 12 SPACES
TOTAL PARKING PROVIDED: 17 SPACES

HANDICAP ACCESSIBLE PARKING REQUIRED: 1 PER 25
HANDICAP ACCESSIBLE PARKING PROVIDED: 1 SPACE



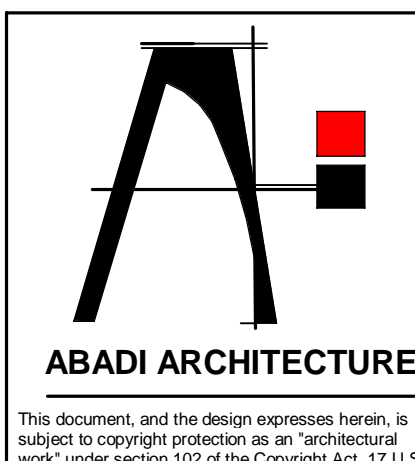
2 ACCESSIBLE RAMP PLAN DETAIL
1/4" = 1'-0"



DAVENPORT ROAD

1 SITE PLAN
1" = 10'-0"

KESHER FOUNDATION WHITEBOX
KESHER FOUNDATION
17826 DAVENPORT ROAD, DALLAS, TEXAS 75252



ABADI ARCHITECTURE

This document, and the design expressed herein, is subject to copyright protection as an "architectural work" under section 102 of the Copyright Act, 17 U.S.C.

Revision No.	Date	Description
1	06/05/2023	LANDLORD IMPROVEMENTS



Marcela Rhoads
02-02-2023

THE SEAL APPEARING ON THIS DOCUMENT WAS AUTHORIZED BY:
NAME: MARCELA RHOADS
RA #: 16721
DATE: 02 / 02 / 2023

ALTERATION OF A SEALED DOCUMENT WITHOUT PROPER NOTIFICATION TO THE RESPONSIBLE ARCHITECT IS AN OFFENSE UNDER THE RULES AND REGULATIONS OF THE TEXAS BOARD OF ARCHITECTURAL EXAMINERS. THE RECORD COPY OF THIS DRAWING IS ON FILE AT THE OFFICES OF ABADI ARCHITECTURE, 7016 DANFIELD CT., DALLAS, TEXAS 75252.

PROJECT NO.: 2022_AR05
Issued: 06/05/2023
Drawn By: DR
Checked By: MAR
Scale: As indicated
Sheet Title
SITE PLAN AND DETAILS

A001
Sheet Number