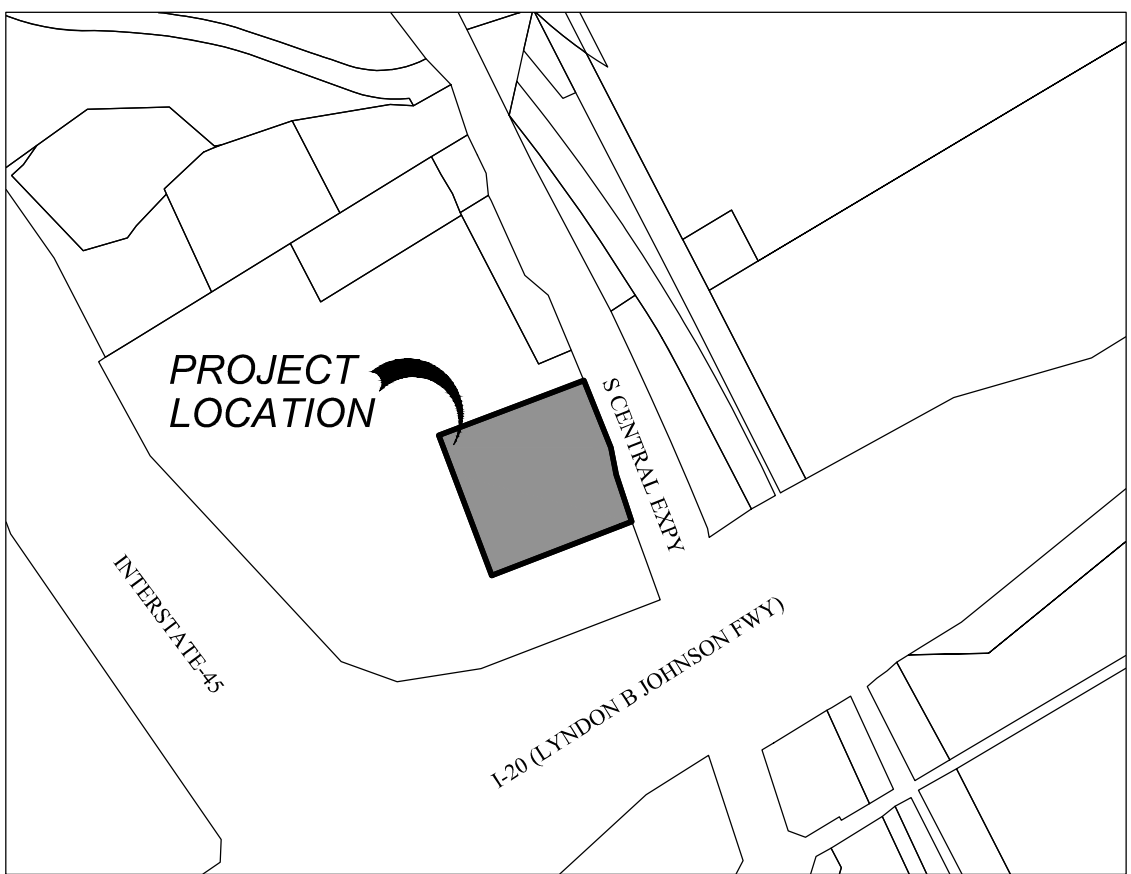
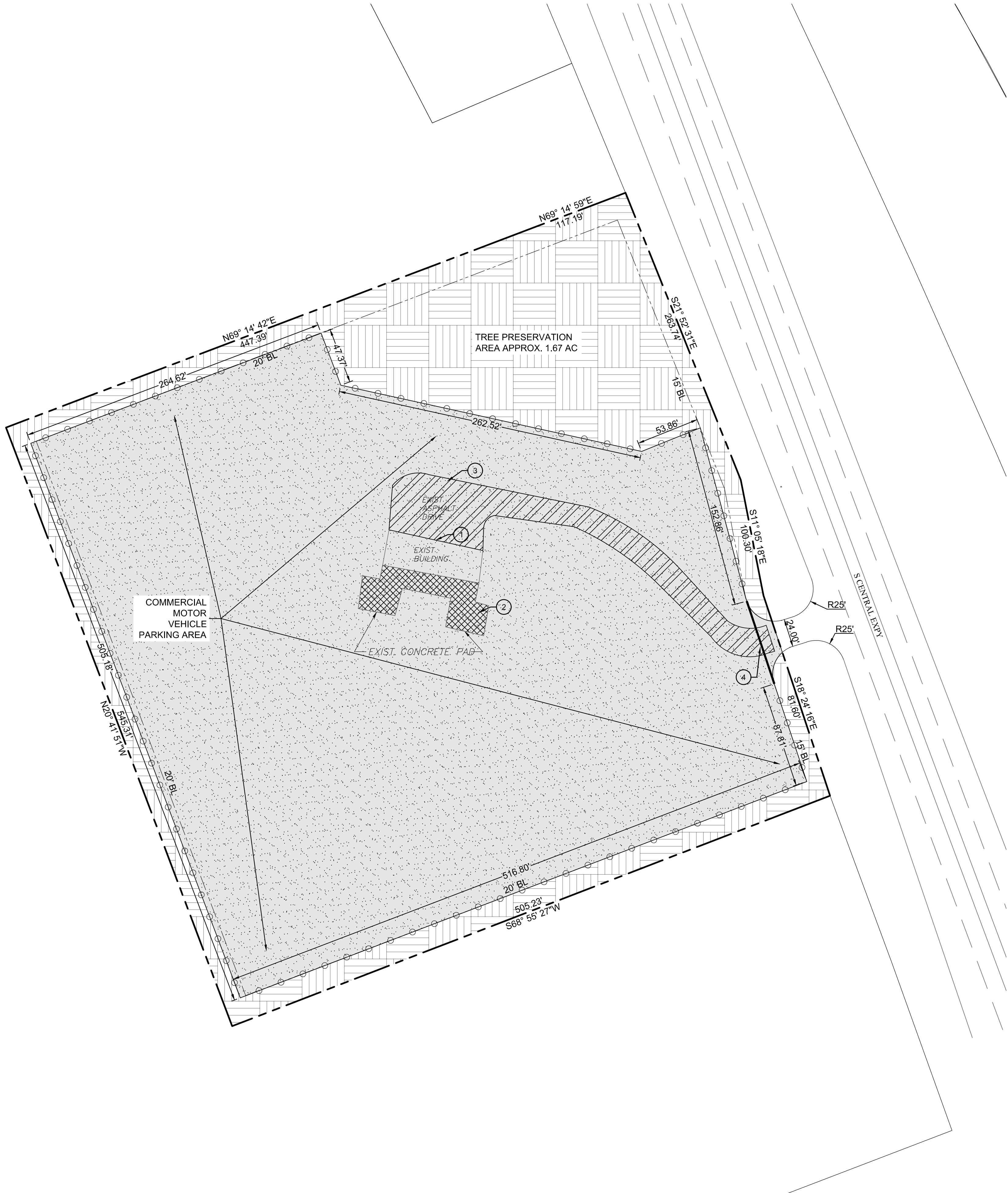


20251105-JOSH JOSEPH L:\JOBS\2025\79.01 10407 S CENTRAL EXPY - DALLAS\EXHIBITS\20250626 PRELIMINARY SITE PLAN EXHIBIT\PRELIMINARY SITE PLAN.DWG

COPYRIGHT ©YYYYBY SHIELD ENGINEERING GROUP PLLC



PROJECT LOCATION MAP  
SCALE: NTS

LEGEND

- PROJECT BOUNDARY: Dashed line with long and short dashes.
- PROPOSED 6' TALL CHAINLINK FENCE: Line with circles.
- PROPOSED SURFACE (TO BE SELECTED FROM APPROVED NON-STANDARD MATERIAL LIST FOR OFF STREET PARKING): Stippled pattern.
- TREE PRESERVATION AREA: Pattern of vertical and horizontal lines.

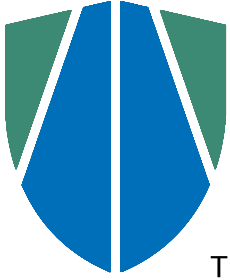
NOTES BY SYMBOL:

- ① EXIST BUILDING TO BE DEMOLISHED
- ② REMOVE & DISPOSE OF 345± SY OF EXIST CONCRETE PAD
- ③ REMOVE & DISPOSE OF 1,159± SY
- ④ PROPOSED GATE

SITE DATA: LOT 1, BLOCK A/8693 HUGHES SUBDIVISION	
EXIST ZONING:	CS (COMMERCIAL SERVICE DISTRICT)
TOTAL APPROXIMATE LAND SIZE:	7.01 ACRES
PROPOSED USE:	COMMERCIAL MOTOR VEHICLE PARKING
FRONT SETBACK:	15 FT
SIDE SETBACK:	20 FT
REAR SETBACK:	20 FT
EXISTING IMPERVIOUS AREA:	17,615.62 SF
PROPOSED TOTAL GRAVEL AREA:	231,367.09 SF
LANDSCAPING AREA:	23.8%

REVISIONS

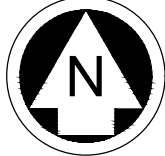
NO.	DESCRIPTION	DATE
1		



SHIELD

ENGINEERING

TBPELS ENGINEERING #F-11039, SURVEYING #10193890



050100150

GRAPHIC SCALE IN FEET

CONSTRUCTION NOTES

CONSTRUCTION NOTES

THE CONTRACTOR SHALL CONTACT THE FOLLOWING AT LEAST 48 HOURS PRIOR TO EXCAVATING AT EACH LOCATION:

CITY WATER DEPARTMENT	XXX-XXX-XXXX
CITY TRANSPORTATION & PUBLIC WORKS	XXX-XXX-XXXX
CITY PARKS DEPARTMENT	XXX-XXX-XXXX
XXX ELECTRIC	XXX-XXX-XXXX
XXXX ENERGY	XXX-XXX-XXXX
PHONE COMPANY	XXX-XXX-XXXX
COMMUNICATIONS	XXX-XXX-XXXX
SAFETY SYSTEM	800-DIG-TESS

HORIZONTAL & VERTICAL CONTROL

BENCHMARK DESCRIPTION

CITY PROJECT # \_\_\_\_\_ MAPSCO # \_\_\_\_\_

DALLAS, TEXAS

10407 S CENTRAL EXPY

PRELIMINARY SITE PLAN EXHIBIT

DESIGNED: \_\_\_\_\_

SCALE: 1" = 50'

DATE: NOV 2025

SHEET: 1 OF 1

10407 S CENTRAL EXPY