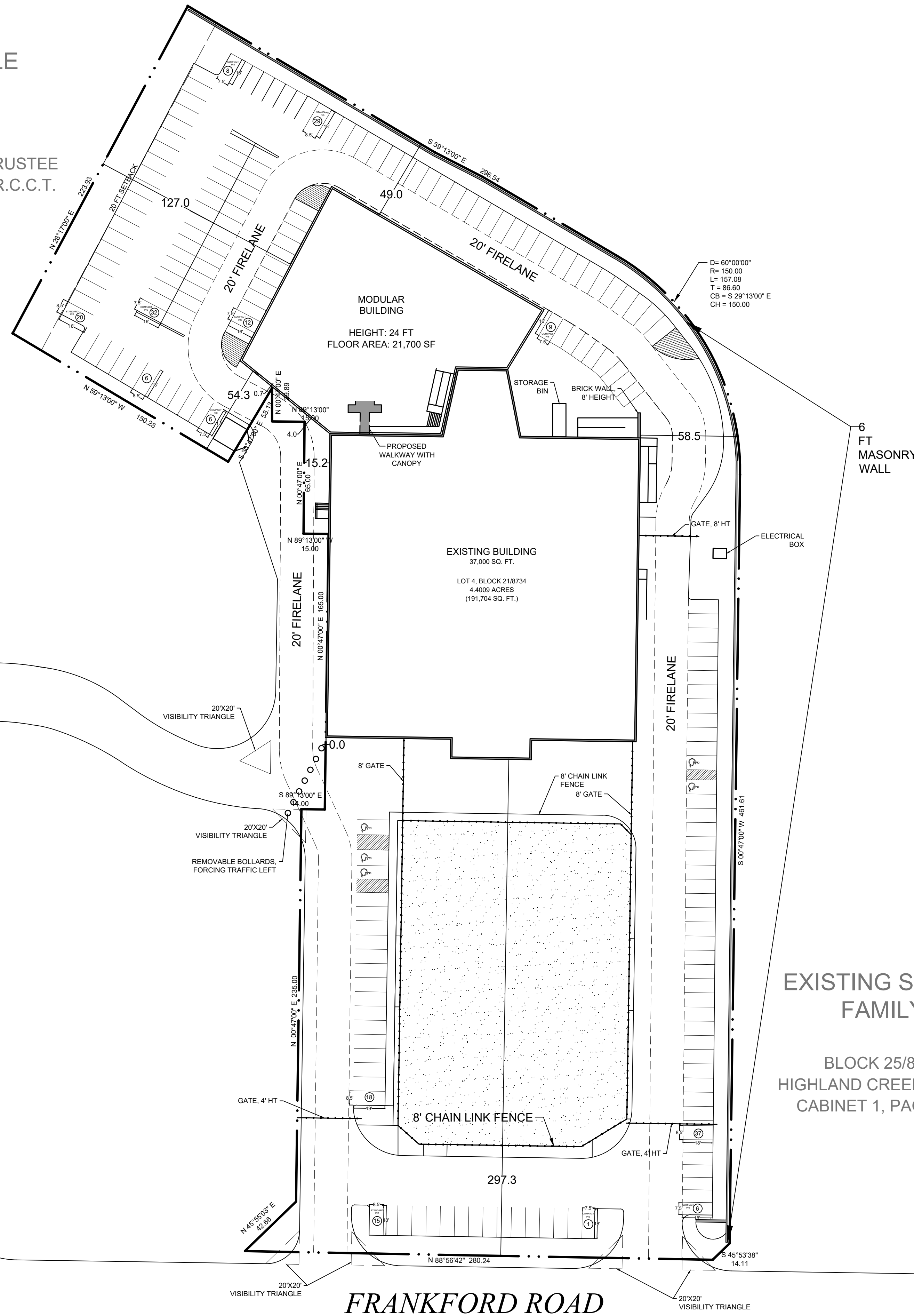


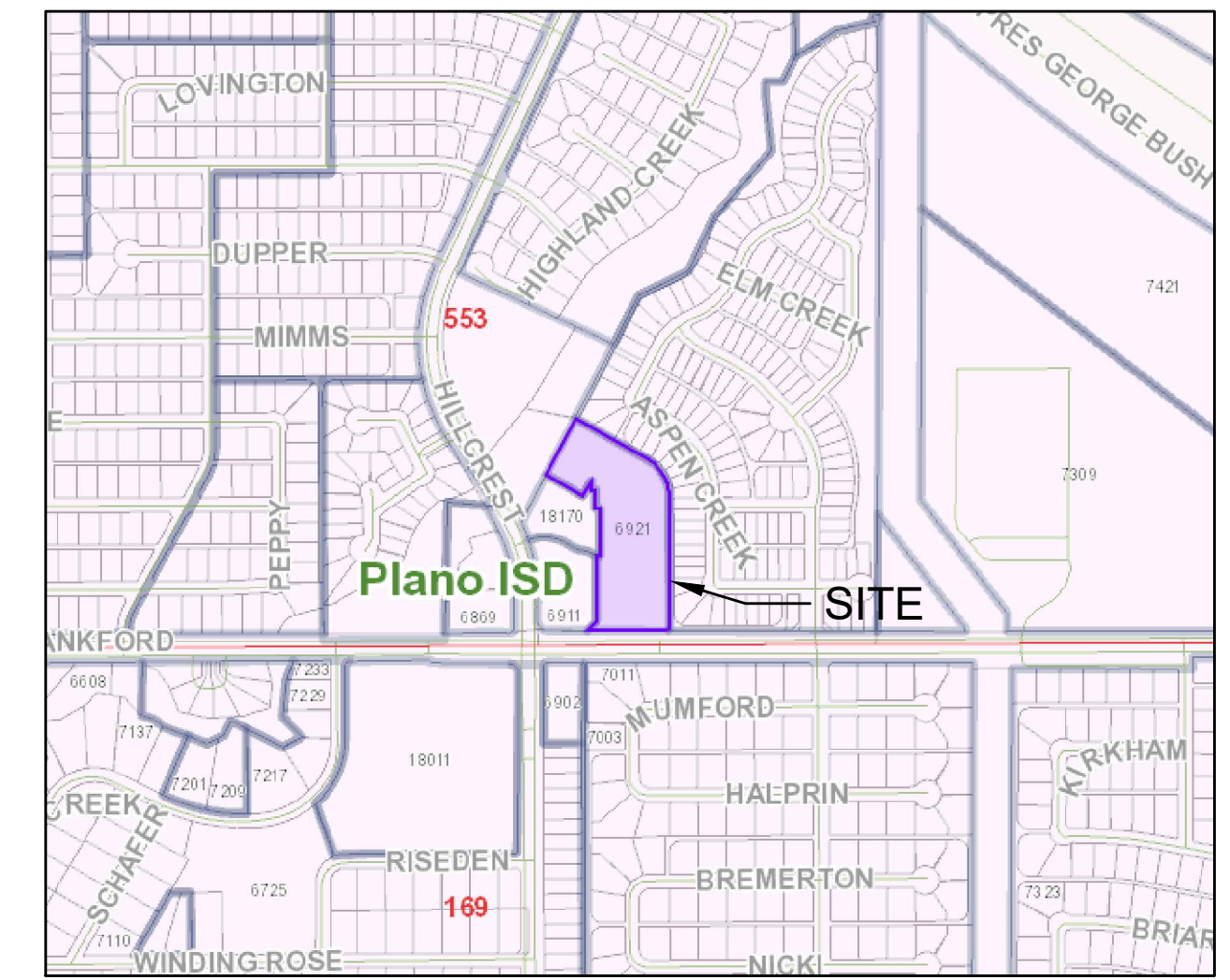
EXISTING SINGLE FAMILY

BLOCK 8734
RLH INVESTMENTS, INC., TRUSTEE
C.C.C.F. NO. 93-0114595, L.R.C.C.T.

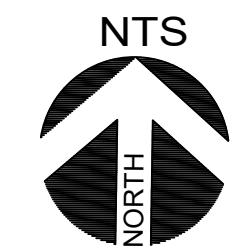


EXISTING SINGLE FAMILY

BLOCK 25/8734
HIGHLAND CREEK MANOR
CABINET 1, PAGE 501.



VICINITY MAP



PD 173 Tract F SUP 1505

	EXISTING (WITH MODULAR)	PHASE 2 (WITH REPLACEMENT BLDG.)		
FLOOR AREA	37,000 SQ. FT.	58,700 SQ. FT.		
LOT COVERAGE	22.05%	30.62%		
4.4 ACRE LOT	191,704 SQ. FT.	191,704 SQ. FT.		
BLDG. HEIGHT/STORIES	24'/ 2 STORY	24'/ 2 STORY		
CLASS ROOM BREAKDOWN				
GRADES	CLASS QTY.	REQ. PARKING	CLASS QTY. / AREA	REQ. PARKING
PRESCHOOL TO ELEMENTARY 5TH	22	33	32	48
MIDDLE SCHOOL (6TH TO 8TH)	18	63	12	42
HIGH SCHOOL (9TH TO 12TH)	7	67	4	38
TOTAL	47	163	48	128
PARKING				
REQUIRED SPACES	163 SPACES	128 SPACES		
PROVIDED SPACES	199 SPACES	199 SPACES		

08/28/2023

PROJECT NUMBER

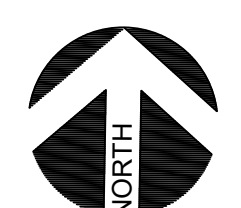
CASE NUMBER

BALDWIN ASSOCIATES

3904 Elm Street, Suite B
Dallas, Texas 75226
MOBILE: 214.729.7949
OFFICE: 214.824.7949
rob@baldwinplanning.com

Baldwin
Associates

TORAH DAY SCHOOL
6921 Frankford Rd
CITY OF DALLAS, TEXAS



1 DEVELOPMENT PLAN - PD173 TRACT F
SCALE: 1" = 40'-0"



M223-016(TB)