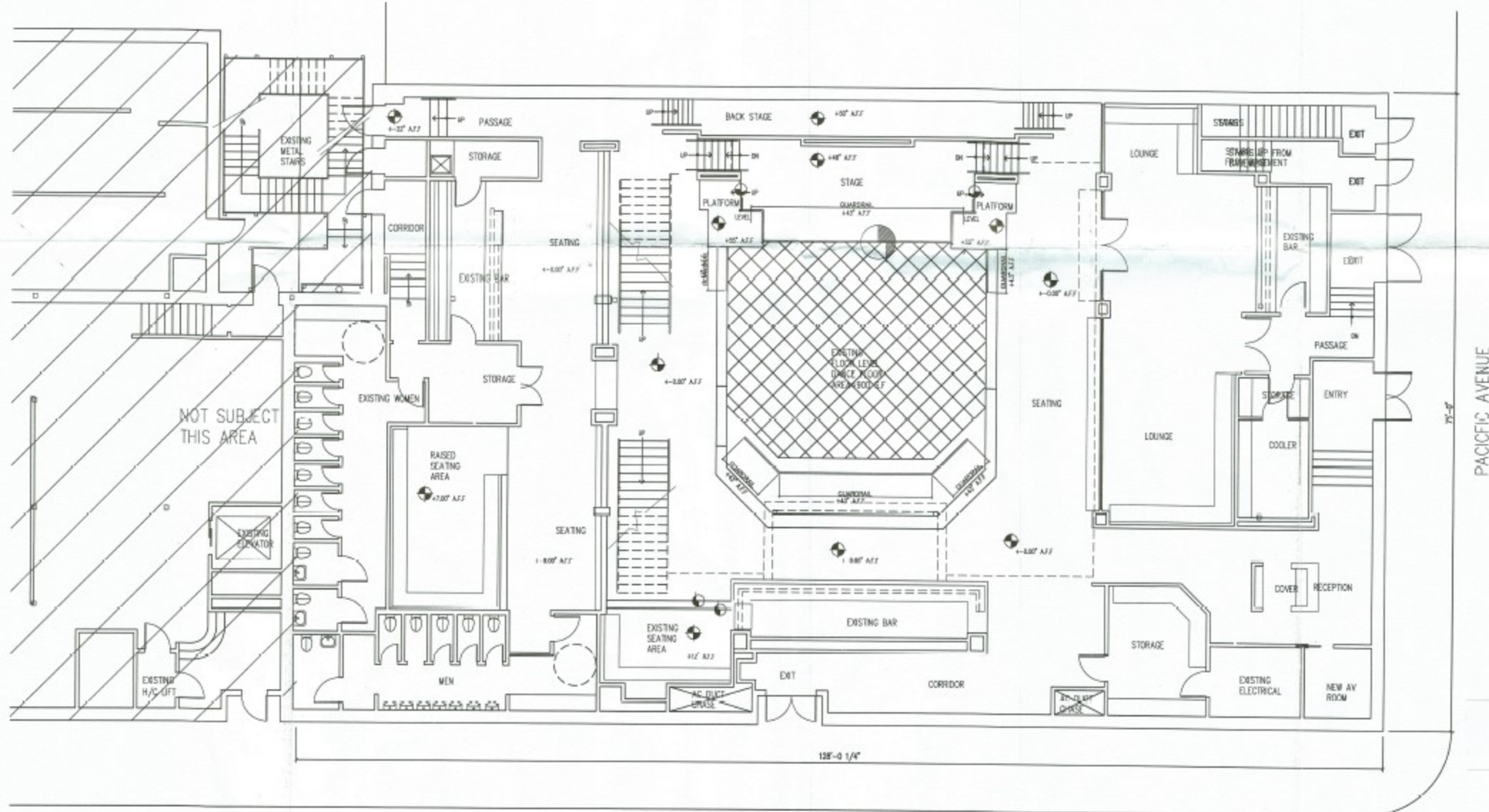


VICINITY MAP 1930 PACIFIC AVENUE, DALLAS TEXAS 75201

KEY PLAN 1930 PACIFIC AVENUE, DALLAS TEXAS 75201 N.T.S.

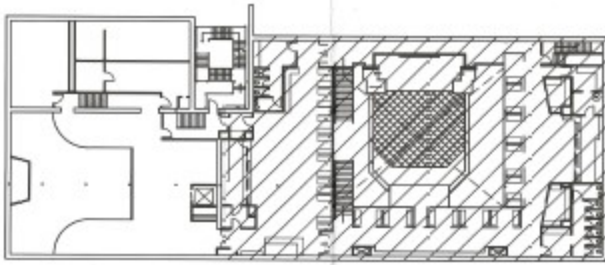


HARDWOOD STREET

01 AS BUILT FIRST LEVEL  
 9,393 S.F. 1ST FLOOR  
 TOTAL 16,192 S.F. OF BUILDING

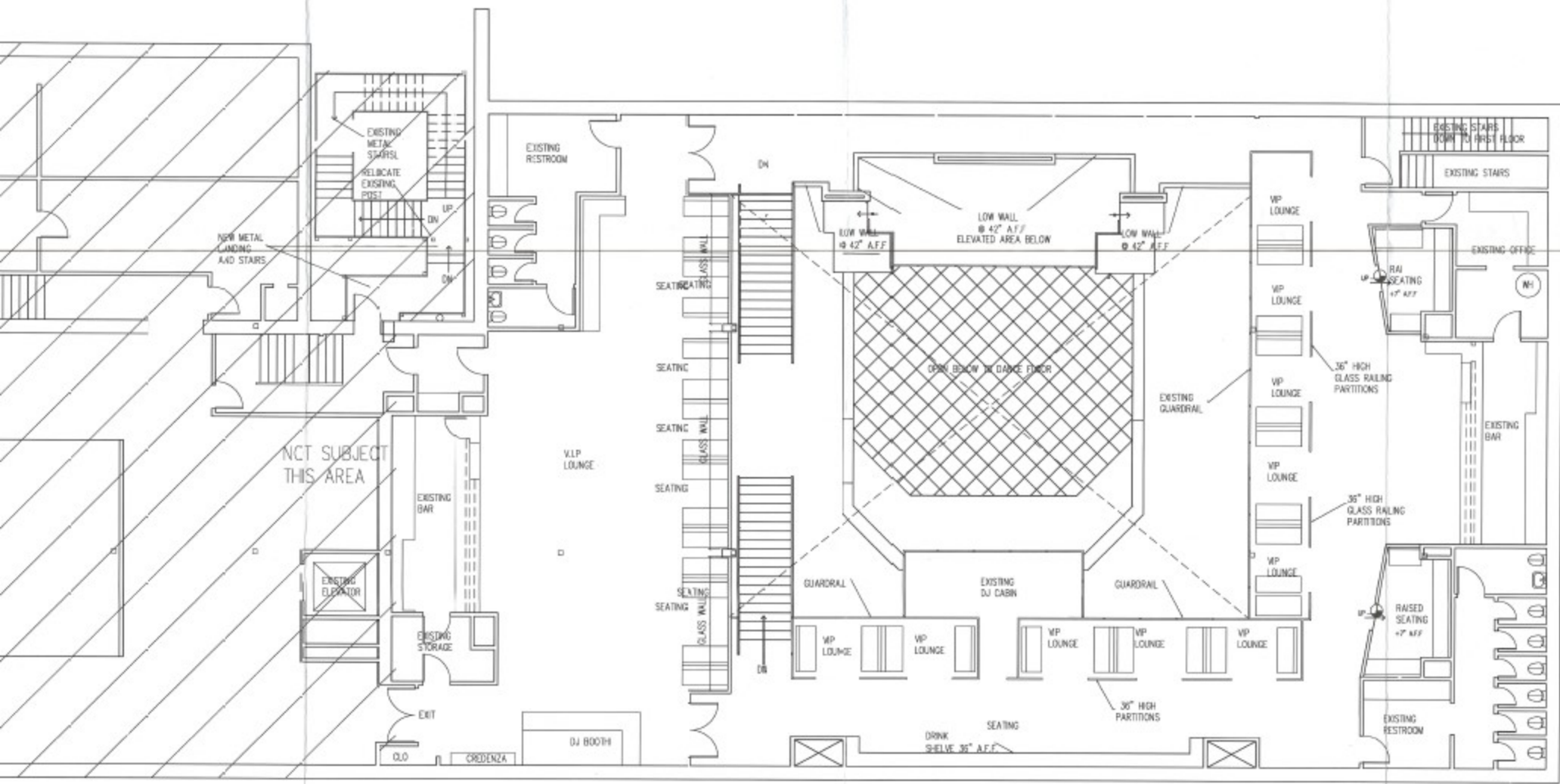
SCALE: 1/4" = 1'-0"  
 PLAN TRUE NORTH

Z123-134(WE)



VICINITY MAP 1930 PACIFIC AVENUE, DALLAS TEXAS 75201

KEY PLAN 1930 PACIFIC AVENUE, DALLAS TEXAS 75201 N.T.S.



01 AS BUILT SECOND LEVEL  
6,799 S.F. 2ND FLOOR

SCALE: 3/8" = 1'-0"  
PLAN TRUE  
NORTH