

Harwood Park

URBAN DESIGN PEER REVIEW PANEL

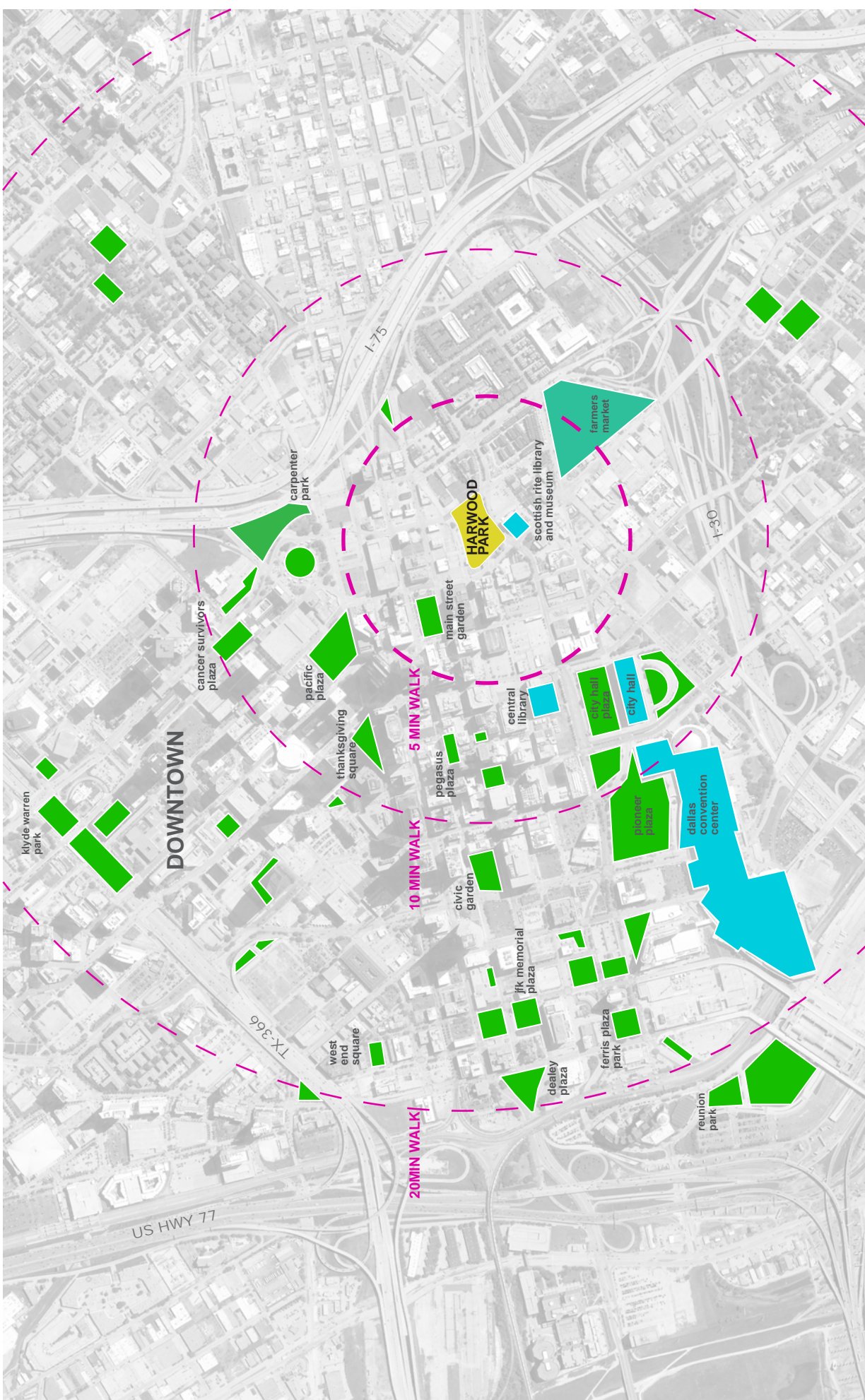
Exhibit B



TEN EYCK
LANDSCAPE ARCHITECTS

PARKER CENTER 1000 BELLUS
PHOTOGRAPHY

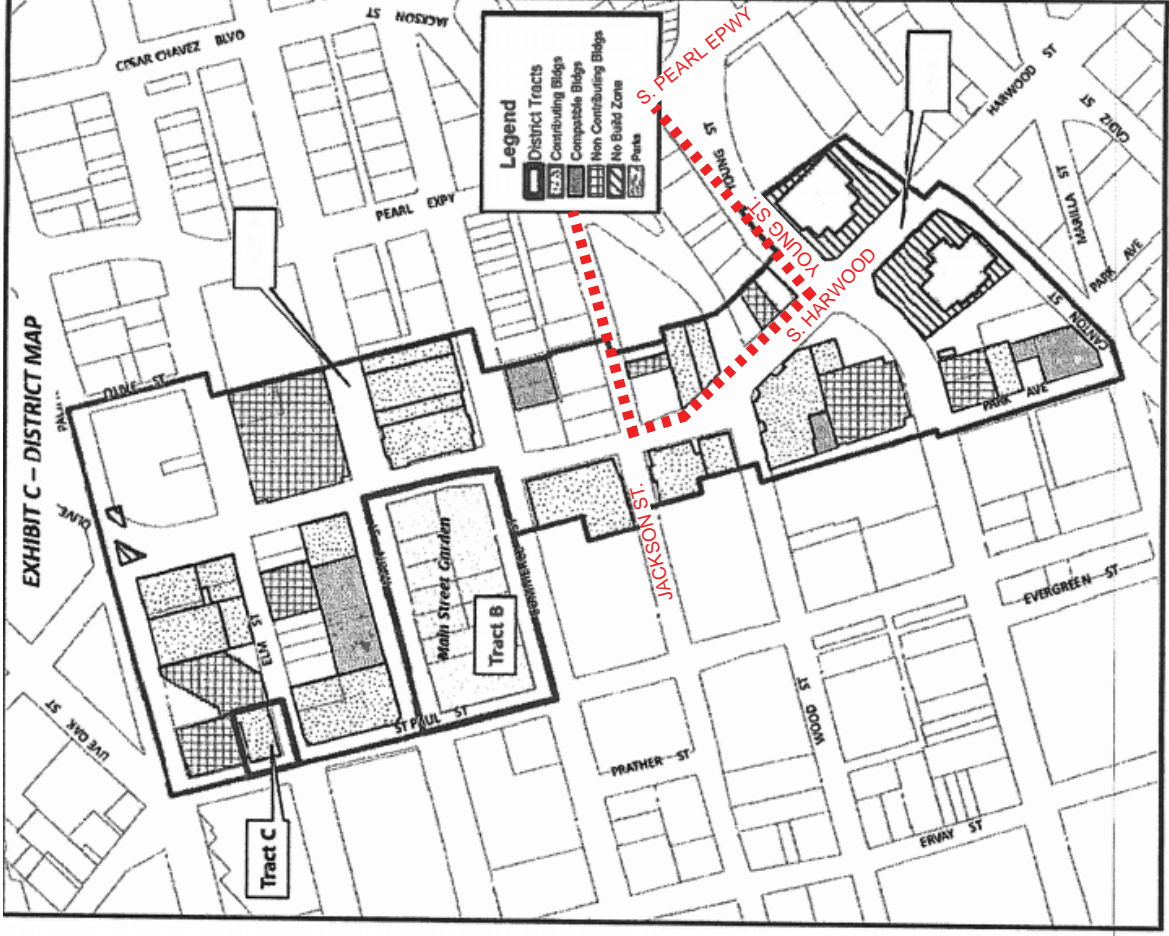
OVERALL PARK DESIGN



SITE CONTEXT



EXHIBIT B



--- HARWOOD PARK BOUNDARY

1:2,800
 Revised Date: 10/27/2017

HARWOOD HISTORIC DISTRICT

4 HARWOOD PARK | Dallas, TX
 URBAN DESIGN PEER REVIEW PANEL



TENEYCK
 LANDSCAPE ARCHITECTS

EXHIBIT B

KEY

- 1 ENTRY PLAZA
- 2 YOGA / EVENT LAWN
- 3 GOLD RING SHADE STRUCTURE
- 4 SIGNAGE WALL
- 5 THE GROVE
- 6 DISPLAY GARDEN
- 7 NORTHEAST ENTRY PLAZA
- 8 PARKING LOT
- 9 RAIN GARDEN
- 10 INTERACTIVE WATER FEATURE
- 11 DOG INTERCEPT
- 12 KIDS PLAY
- 13 FLEXIBLE SEATING
- 14 BRIDGE CROSSING
- 15 SPORTS COURT
- 16 S. HARWOOD TRELLIS
- 17 DOG PARK
- 18 GREAT LAWN
- 19 PROMENADE
- 20 BIKE RACKS
- BIKE ROUTE



OVERALL SITE PLAN

5 HARWOOD PARK | Dallas, TX
URBAN DESIGN PEER REVIEW PANEL



SCALE: 1" = 80'-0"

EXHIBIT B



KEY

- 1 ENTRY PLAZA
- 2 YOGA / EVENT LAWN
- 3 GOLD RING SHADE STRUCTURE
- 4 SIGNAGE WALL
- 5 THE GROVE
- 6 DISPLAY GARDEN
- 7 NORTHEAST ENTRY PLAZA
- 8 PARKING LOT
- 9 RAIN GARDEN
- 10 INTERACTIVE WATER FEATURE
- 11 DOG INTERCEPT
- 12 KIDS PLAY
- 13 FLEXIBLE SEATING
- 14 BRIDGE CROSSING
- 15 SPORTS COURT
- 16 S. HARWOOD TRELLIS
- 17 DOG PARK
- 18 GREAT LAWN
- 19 PROMENADE
- 20 BIKE RACKS
- BIKE ROUTE

--- HARWOOD HISTORIC DISTRICT BOUNDARY



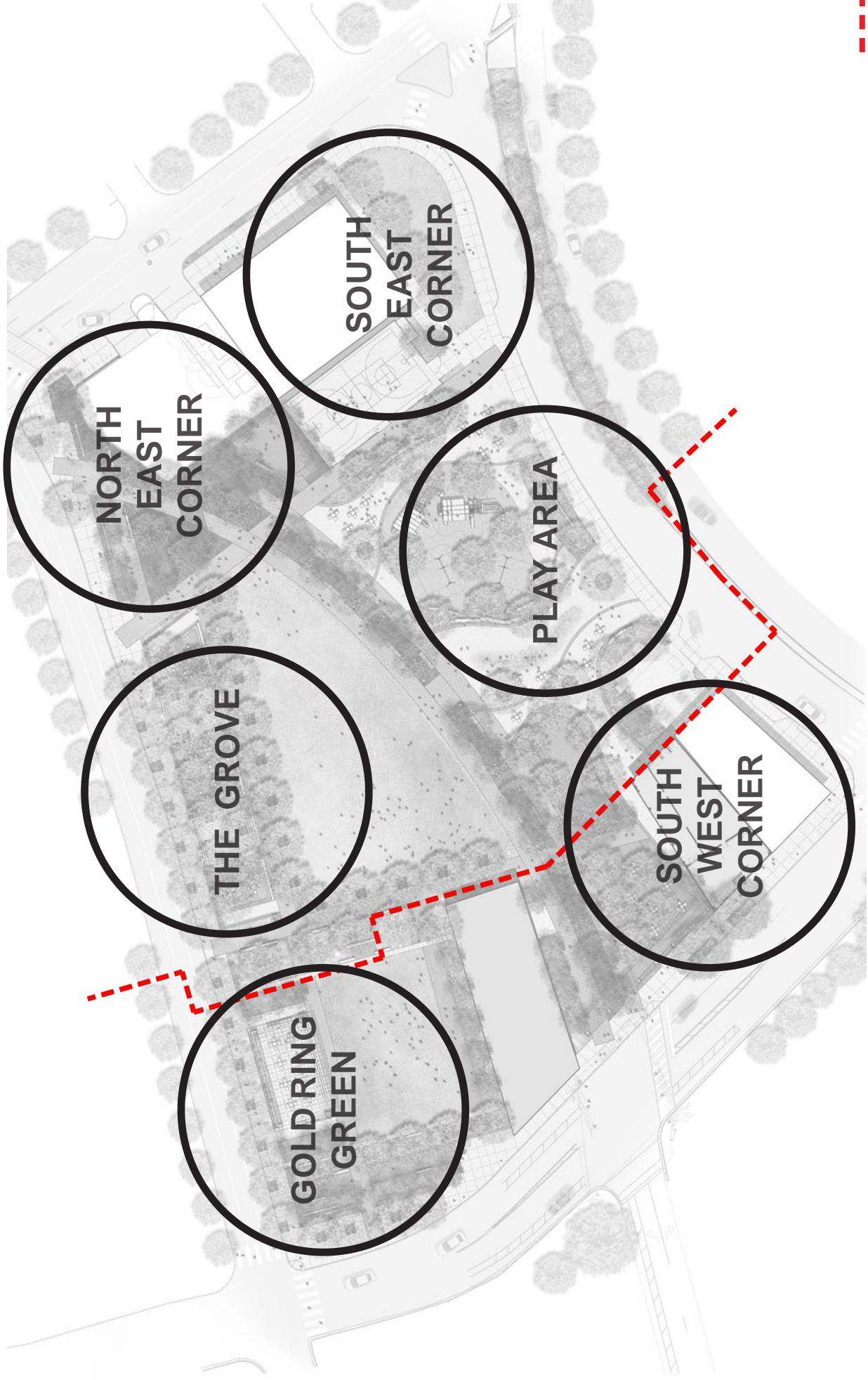
SCALE: 1" = 80'-0"

HISTORIC DISTRICT OVERLAY

6 HARWOOD PARK | Dallas, TX
URBAN DESIGN PEER REVIEW PANEL



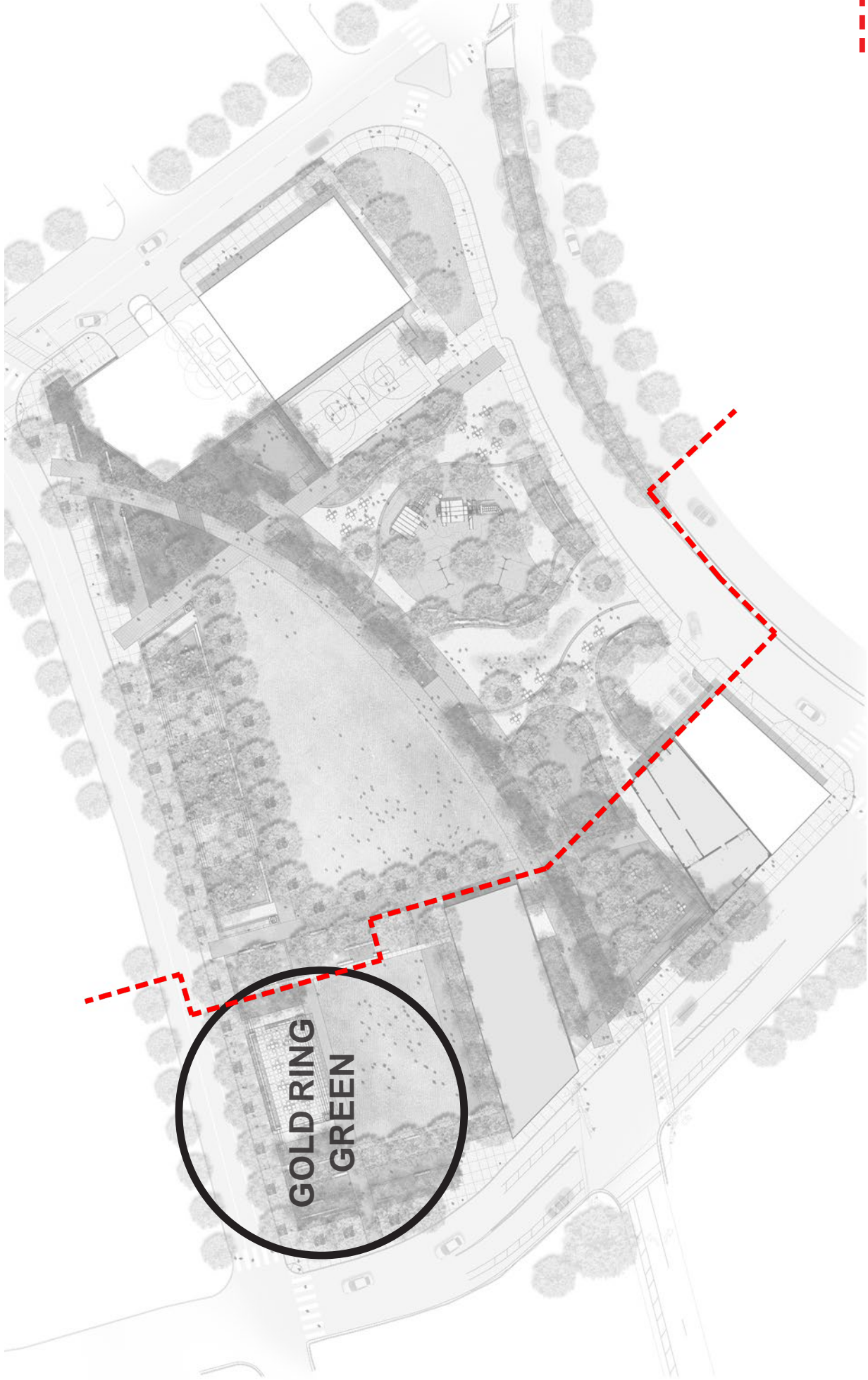
TEN EYCK
LANDSCAPE ARCHITECTS



--- HARWOOD HISTORIC DISTRICT BOUNDARY

PARK AREAS





--- HARWOOD HISTORIC DISTRICT BOUNDARY

KEY PLAN

8 HARWOOD PARK | Dallas, TX
URBAN DESIGN PEER REVIEW PANEL

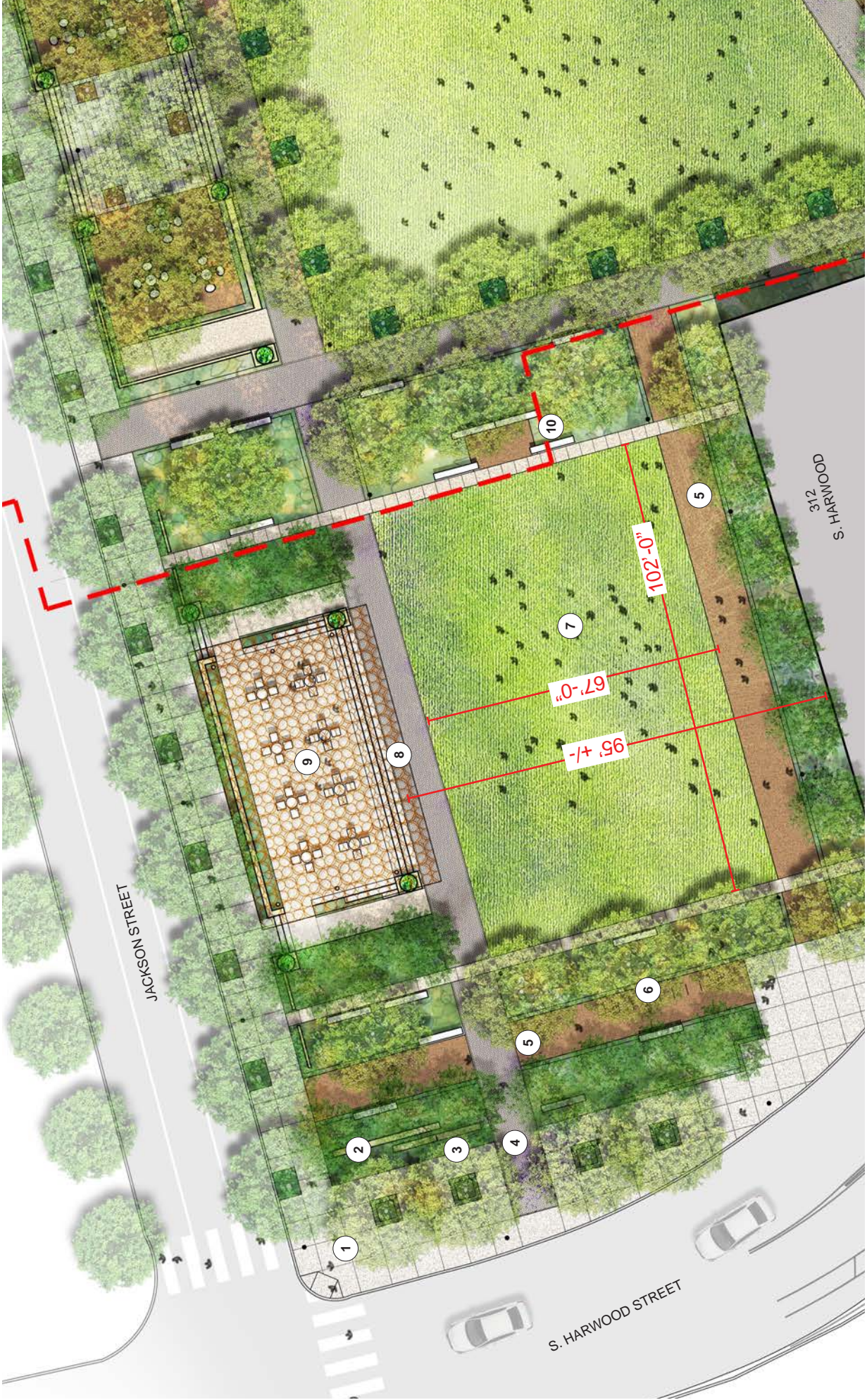
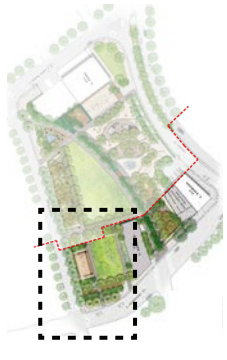


TEN EYCK
LANDSCAPE ARCHITECTS

EXHIBIT B

KEY

- 1 ENTRY PLAZA
- 2 SIGNAGE WALL
- 3 PLANTING AREA
- 4 UNIT PAVING
- 5 STABILIZED DG & STEEL HEADER
- 6 BIKE RACKS
- 7 LAWN
- 8 GOLD RING ARBOR
- 9 RAISED SEATING AREA
- 10 BENCHES
- - - HARWOOD HISTORIC DISTRICT BOUNDARY



60'

30'

15'

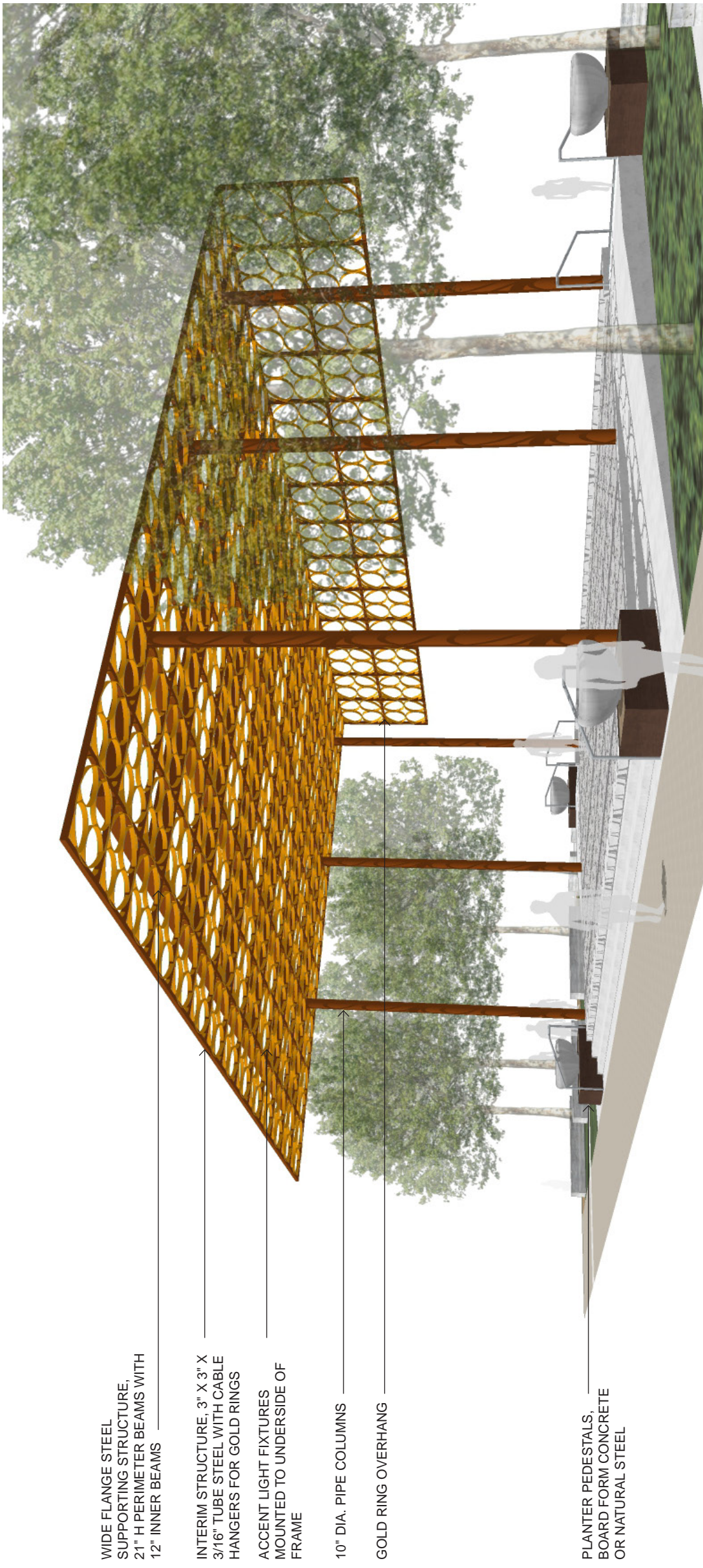
7.5'

SCALE: 1" = 30'-0"

ENLARGEMENT - GOLD RING GREEN

HARWOOD PARK | Dallas, TX
URBAN DESIGN PEER REVIEW PANEL





WIDE FLANGE STEEL
SUPPORTING STRUCTURE,
21" H PERIMETER BEAMS WITH
12" INNER BEAMS

INTERIM STRUCTURE, 3" X 3" X
3/16" TUBE STEEL WITH CABLE
HANGERS FOR GOLD RINGS

ACCENT LIGHT FIXTURES
MOUNTED TO UNDERSIDE OF
FRAME

10" DIA. PIPE COLUMNS

GOLD RING OVERHANG

PLANTER PEDESTALS,
BOARD FORM CONCRETE
OR NATURAL STEEL

DETAILS - GOLD RING ARBOR



EXHIBIT B

PERSPECTIVE - CORNER OF JACKSON & S. HARWOOD TOWARD GOLD RING GREEN

11 HARWOOD PARK | Dallas, TX
URBAN DESIGN PEER REVIEW PANEL



TENEYCK
LANDSCAPE ARCHITECTS



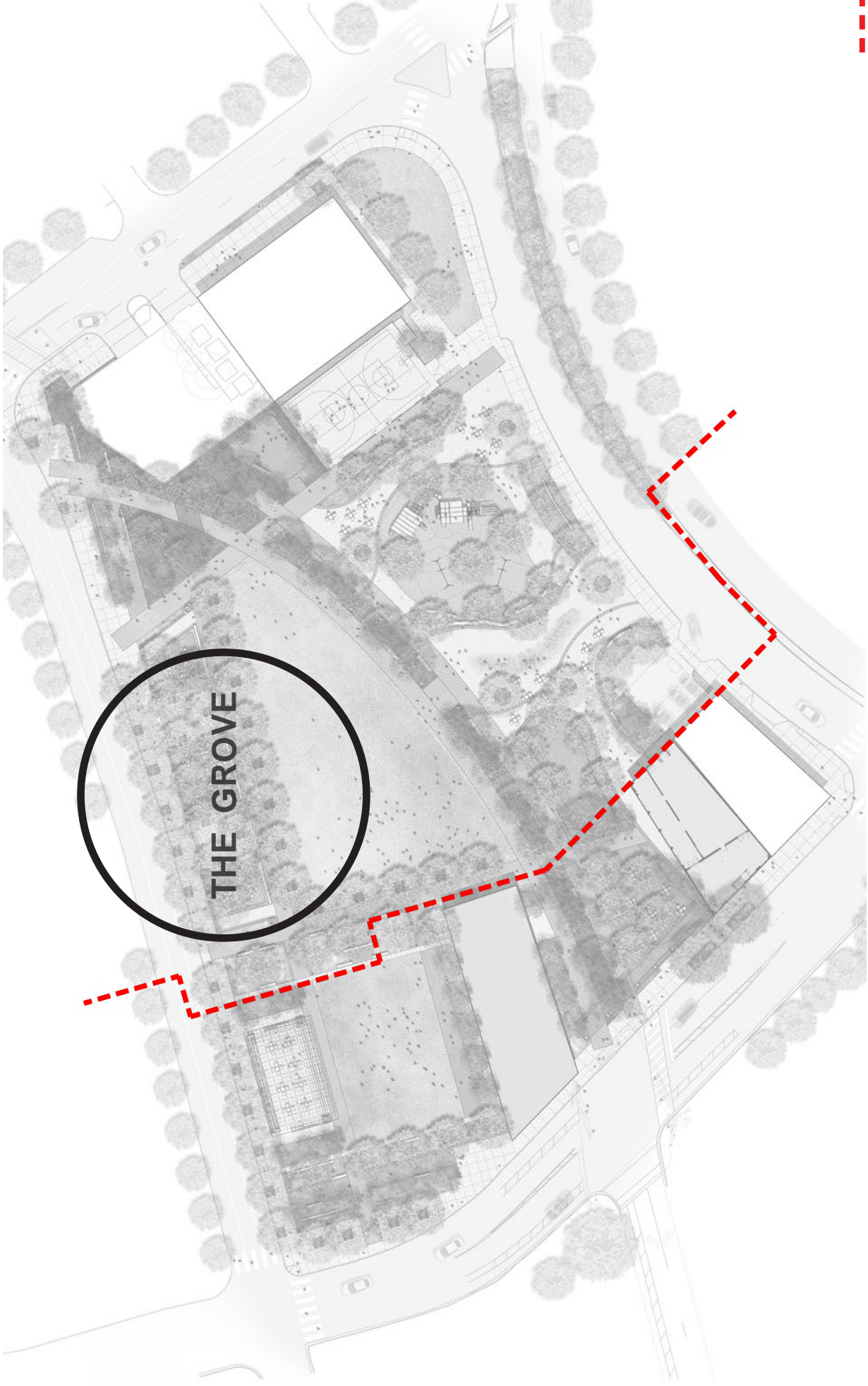
EXHIBIT B

PERSPECTIVE - GOLD RING GREEN AND ARBOR BEYOND

12 HARWOOD PARK | Dallas, TX
URBAN DESIGN PEER REVIEW PANEL



TEN EYCK
LANDSCAPE ARCHITECTS



--- HARWOOD HISTORIC DISTRICT BOUNDARY

KEY PLAN

13 HARWOOD PARK | Dallas, TX
URBAN DESIGN PEER REVIEW PANEL



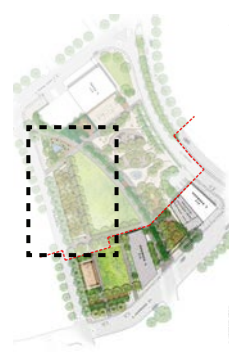
TENEYCK
LANDSCAPE ARCHITECTS

EXHIBIT B



KEY

- 1 UNIT PAVING
- 2 STABILIZED DG
- 3 SLOPED WALK 5% (8' WIDE)
- 4 CONCRETE STEPS
- 5 ACCENT PLANTERS
- 6 RECLAIMED STONE PAVING
- 7 GREAT LAWN
- 8 LOW CONCRETE WALL
- 9 PLANTING AREA
- 10 SHADE TREES
- - - HARWOOD HISTORIC DISTRICT BOUNDARY



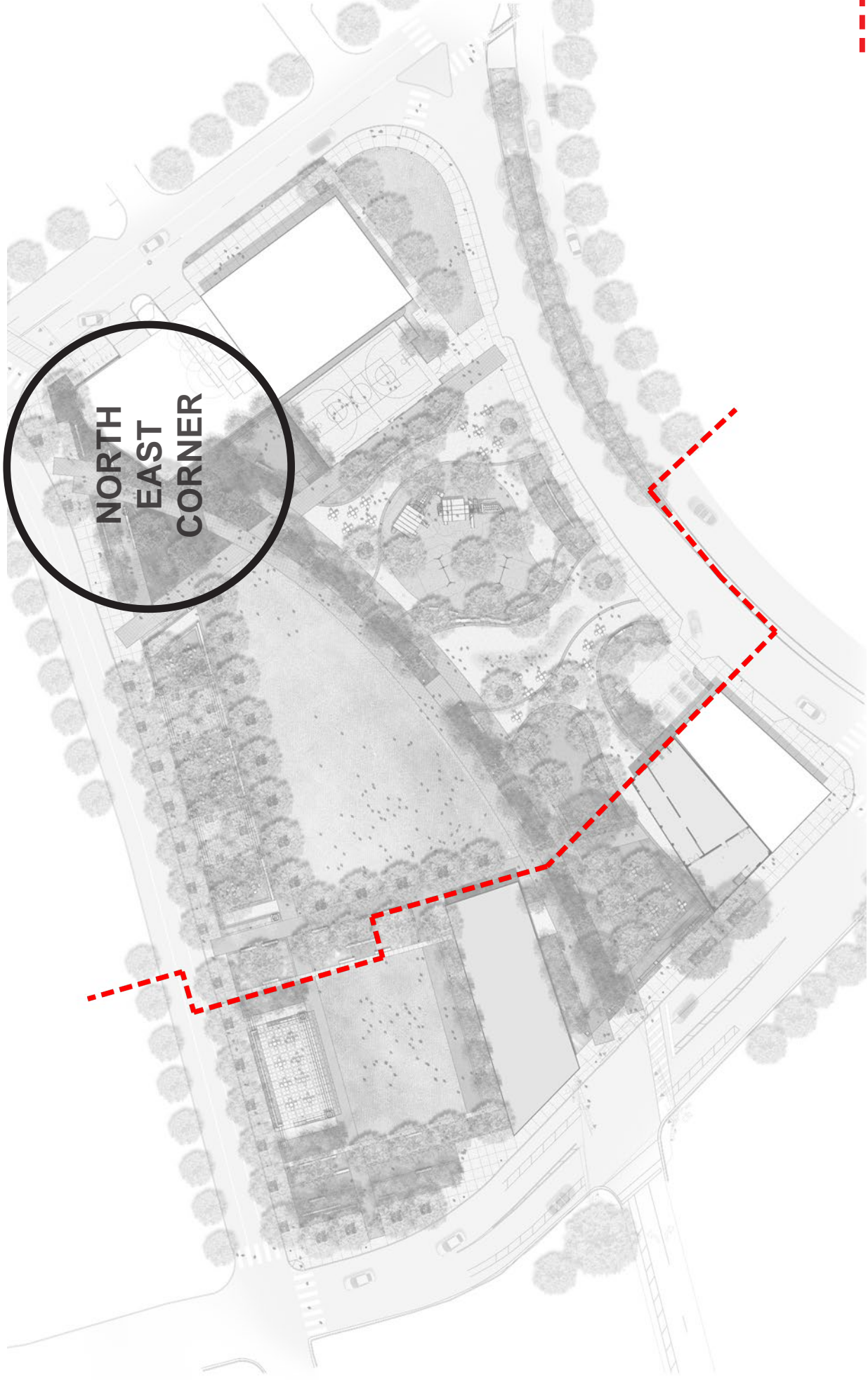
SCALE: 1" = 30'-0"

ENLARGEMENT - THE GROVE

14 HARWOOD PARK | Dallas, TX
URBAN DESIGN PEER REVIEW PANEL



PERSPECTIVE - THE GROVE LOOKING SOUTH TOWARD SCOTTISH RITE



--- HARWOOD HISTORIC DISTRICT BOUNDARY

KEY PLAN

16 HARWOOD PARK | Dallas, TX
URBAN DESIGN PEER REVIEW PANEL

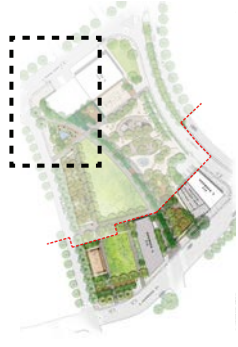


TEN EYCK
LANDSCAPE ARCHITECTS

EXHIBIT B



- KEY**
- 1 ENTRY PLAZA
 - 2 UNIT PAVING
 - 3 SIGNAGE WALL
 - 4 7' H BRICK WALL
 - 5 PLANTING AREA
 - 6 STABILIZED DG
 - 7 BRIDGE
 - 8 PRIVATE PARKING
 - 9 RAIN GARDEN
 - 10 DOG PARK

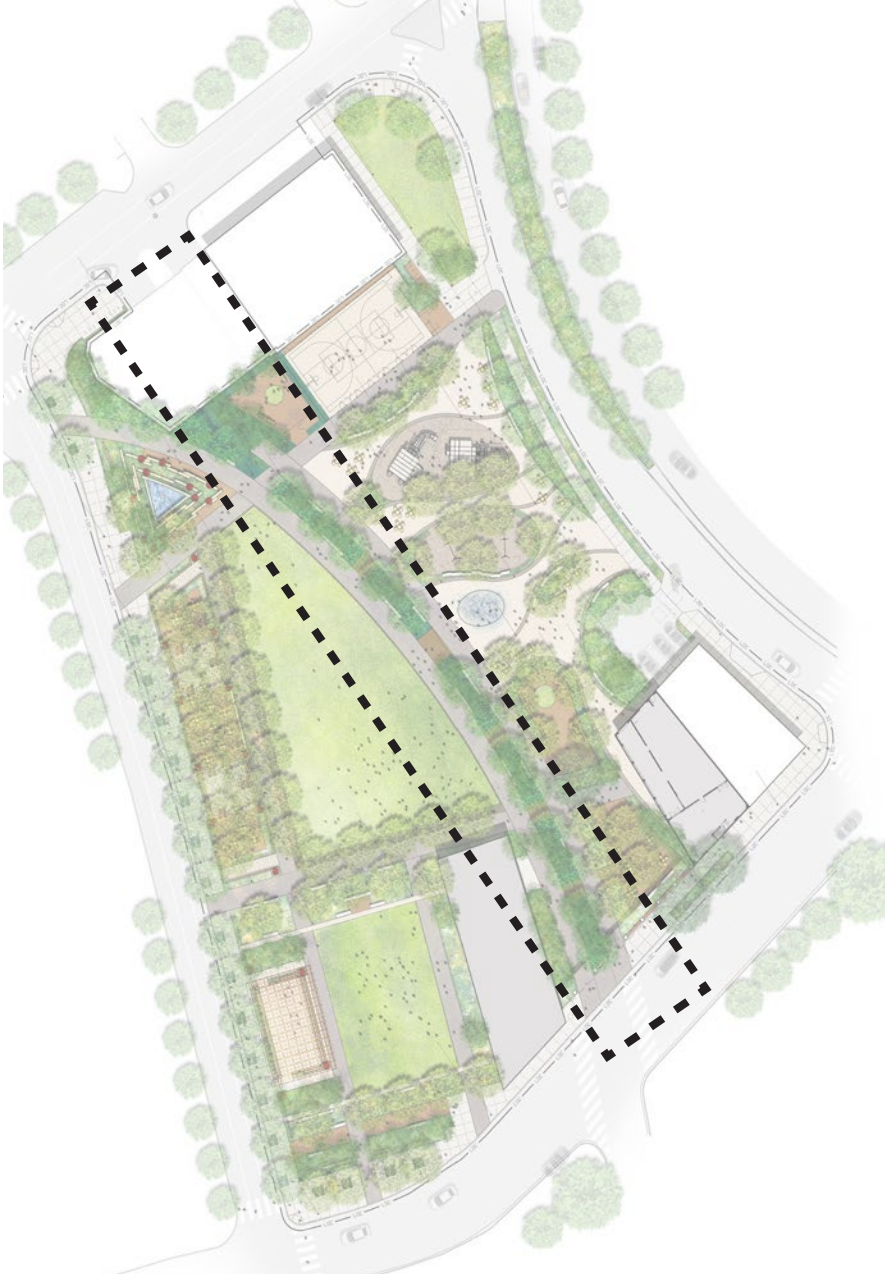


ENLARGEMENT - NORTH EAST CORNER

17 HARWOOD PARK | Dallas, TX
 URBAN DESIGN PEER REVIEW PANEL



PERSPECTIVE - NORTH EAST CORNER LOOKING INTO PARK



PLANTING PALETTE - PROMENADE / RAIN GARDEN

19 HARWOOD PARK | Dallas, TX
URBAN DESIGN PEER REVIEW PANEL



Bald Cypress



Yaupon Holly



Mexican Buckeye



Rusty Blackhaw Viburnum



Texas Redbud



Inland Sea Oats



Late Boneset



Sabal Minor



Berkeley Sedge



Turk's Cap

EXHIBIT B



TEN EYCK
LANDSCAPE ARCHITECTS

NOT TO SCALE



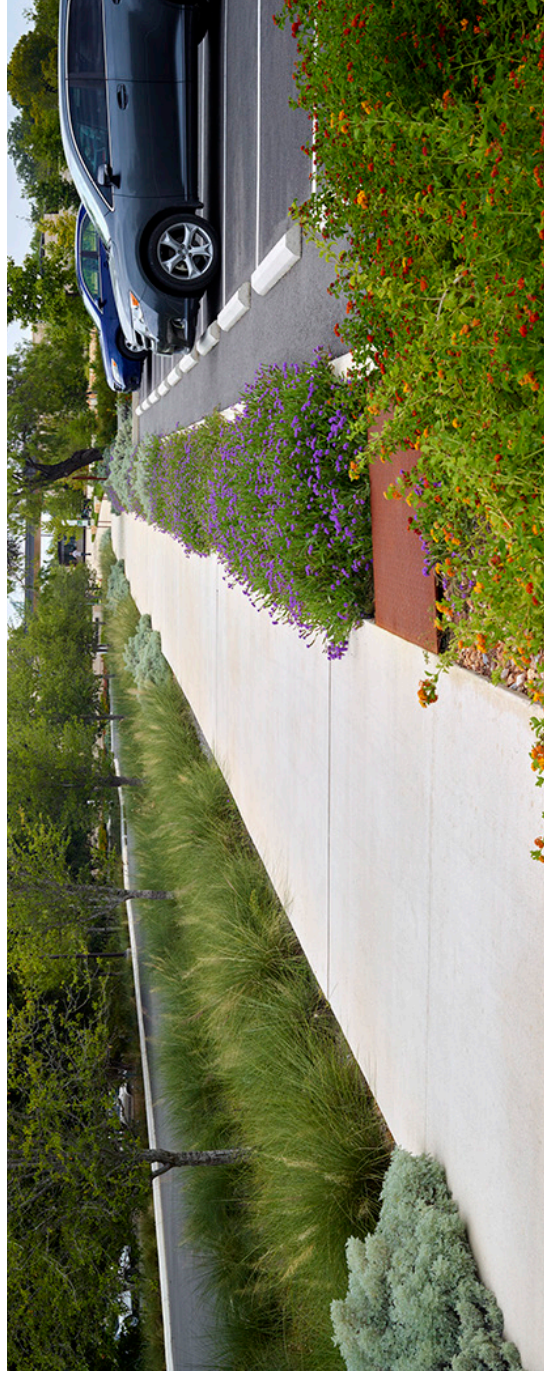


EXHIBIT B

PERSPECTIVE - PROMENADE / RAIN GARDEN

20 HARWOOD PARK | Dallas, TX
URBAN DESIGN PEER REVIEW PANEL



TENEYCK
LANDSCAPE ARCHITECTS

EXHIBIT B



PLANTING PLAN - TREES & UNDERSTORY SEASONAL DIAGRAM



EXHIBIT B



Platanus mexicana
Mexican Sycamore



Quercus buckleyi
Texas Red Oak



Quercus muehlenbergii
Chinkapin Oak



Cercis canadensis var. *texensis*
Texas Redbud



Fraxinus albicans
Texas Ash



Ilex vomitoria
Yaupon Holly



Quercus polymorpha
Monterrey Oak



Taxodium distichum
Bald Cypress



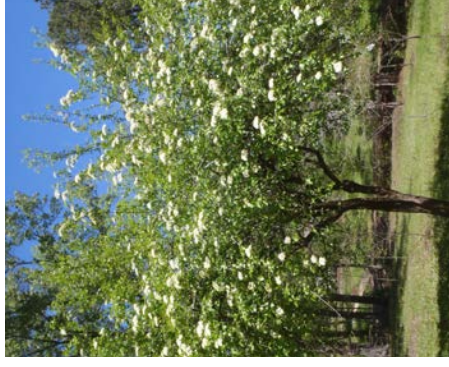
Ulmus crassifolia
Cedar Elm



Lagerstroemia indica
Crape Myrtle
Watermelon Red



Unghadia speciosa
Mexican Buckeye



Viburnum rufidulum
Rusty Blackhaw
Viburnum

PLANTING PALETTE- TREES

EXHIBIT B



Agave ovatifolia
Whale's tongue agave



Bignonia capreolata
Crossvine



Chasmanthium latifolium
Inland Sea Oats



Euonymus fortunei
Winter Creeper



Ilex vomitoria 'Nana'
Dwarf Yaupon Holly



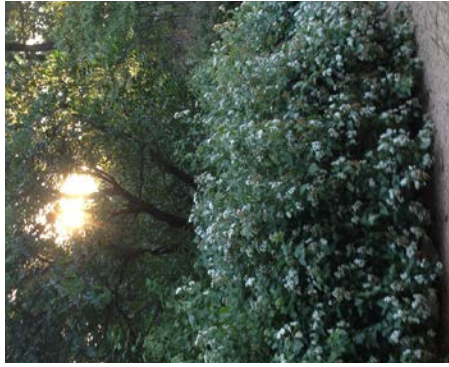
Liriope muscari
Big Blue Liriope



Carex divulsa
Berkeley Sedge



Carex oshimensis 'Everillo'
Everillo Sedge



Eupatorium havanensis
Shrubby Boneset



Ficus pumila
Creeping Fig



Malva viscus drummondii
Turk's Cap



Muehlenbergia dumosa
Bamboo Muhly

PLANTING PALETTE - UNDERSTORY

EXHIBIT B



Nasella tenuissima
Mexican Feathergrass



Nepeta x faassenii 'Walker's low'
Walker's Low Catmint



Salvia leucantha
Mexican Bush Sage



Raphiolepis indica
'Majestic Beauty'
Indian Hawthorne

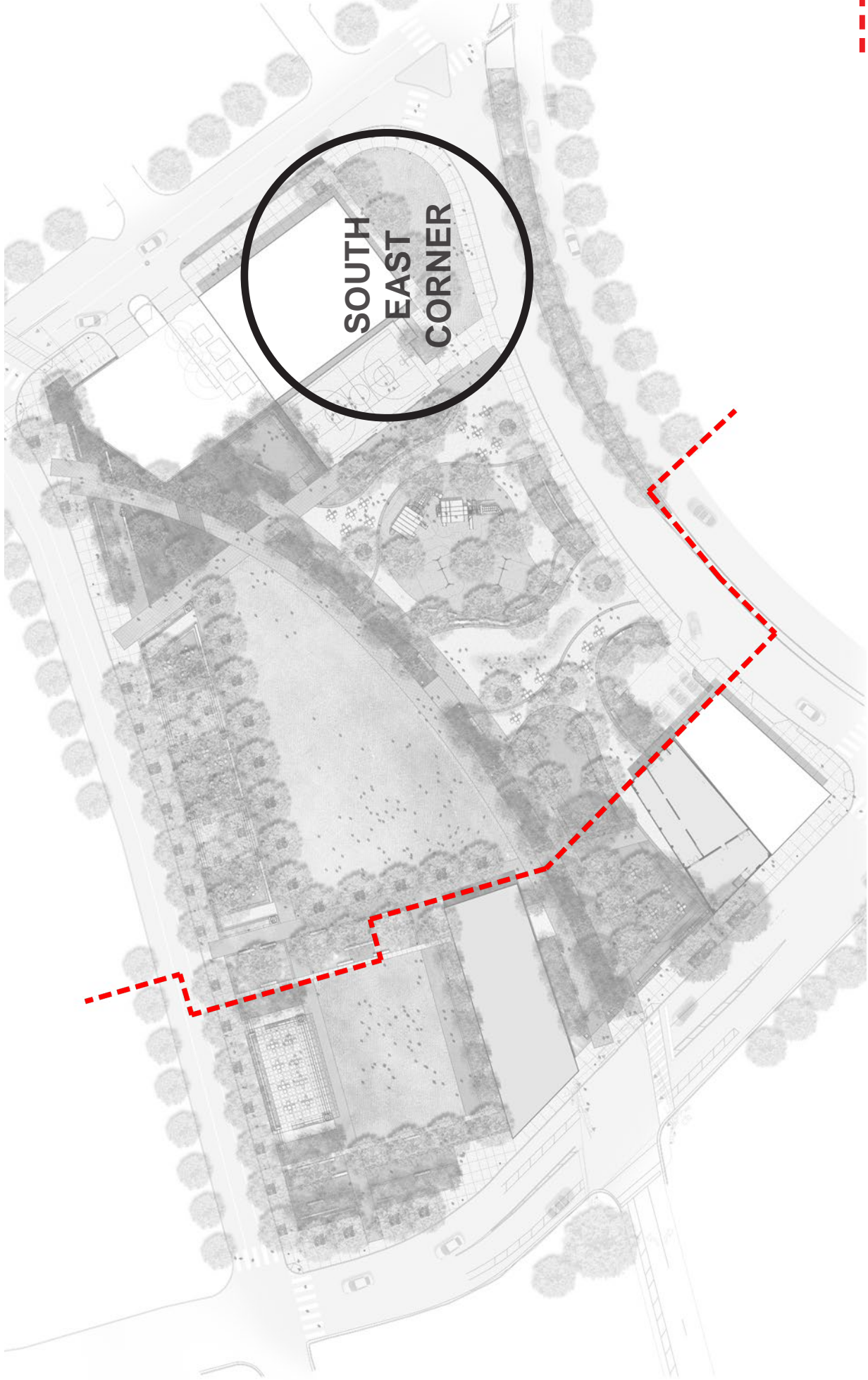


Sabal minor
Dwarf Palmetto



Eupatorium serotinum
Late Boneset

PLANTING PALETTE - UNDERSTORY



--- HARWOOD HISTORIC DISTRICT BOUNDARY

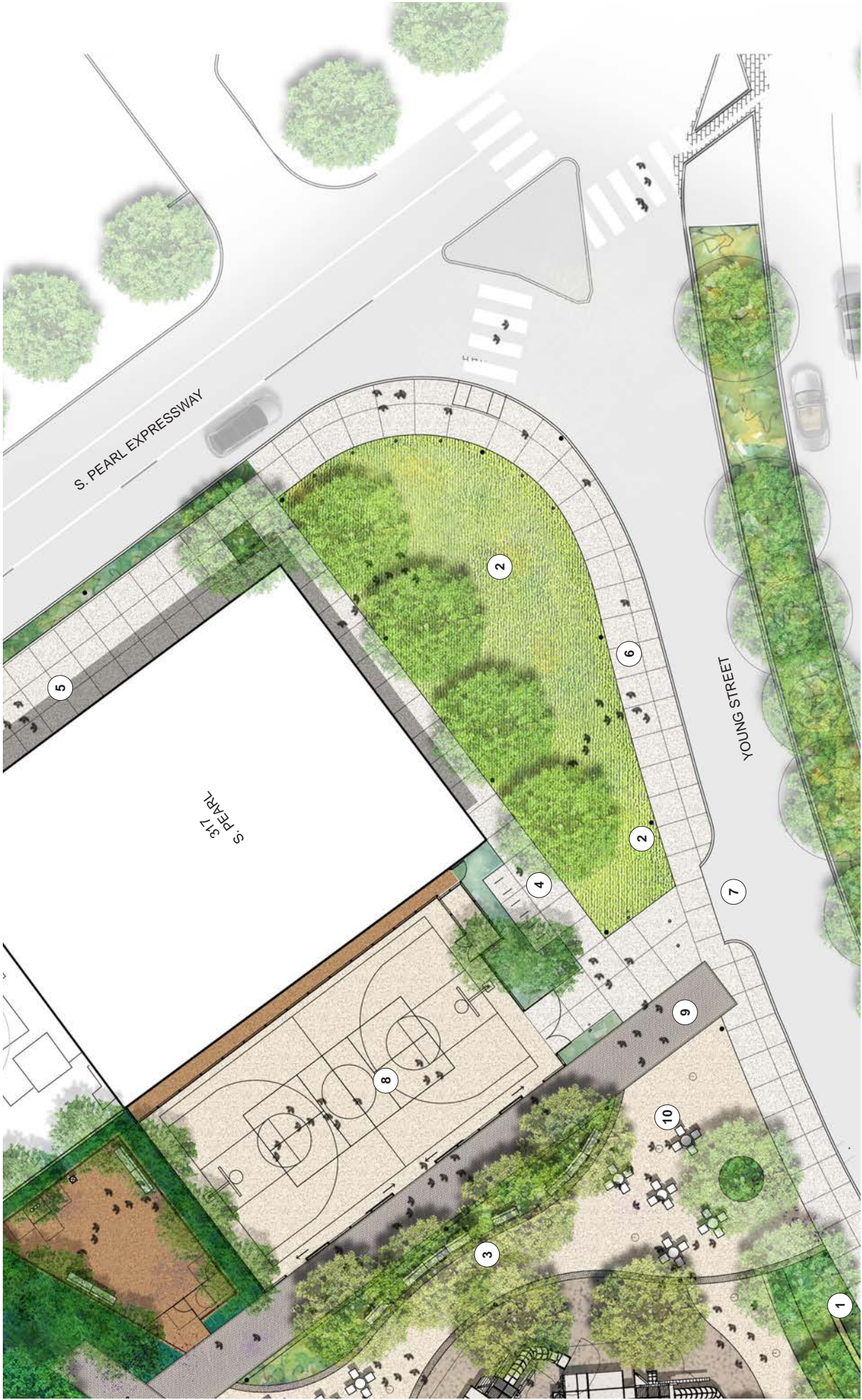
KEY PLAN

25 HARWOOD PARK | Dallas, TX
URBAN DESIGN PEER REVIEW PANEL



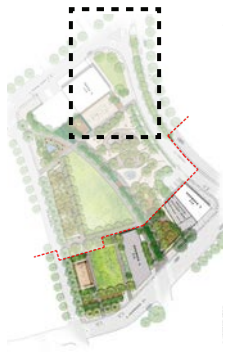
TEN EYCK
LANDSCAPE ARCHITECTS

EXHIBIT B



KEY

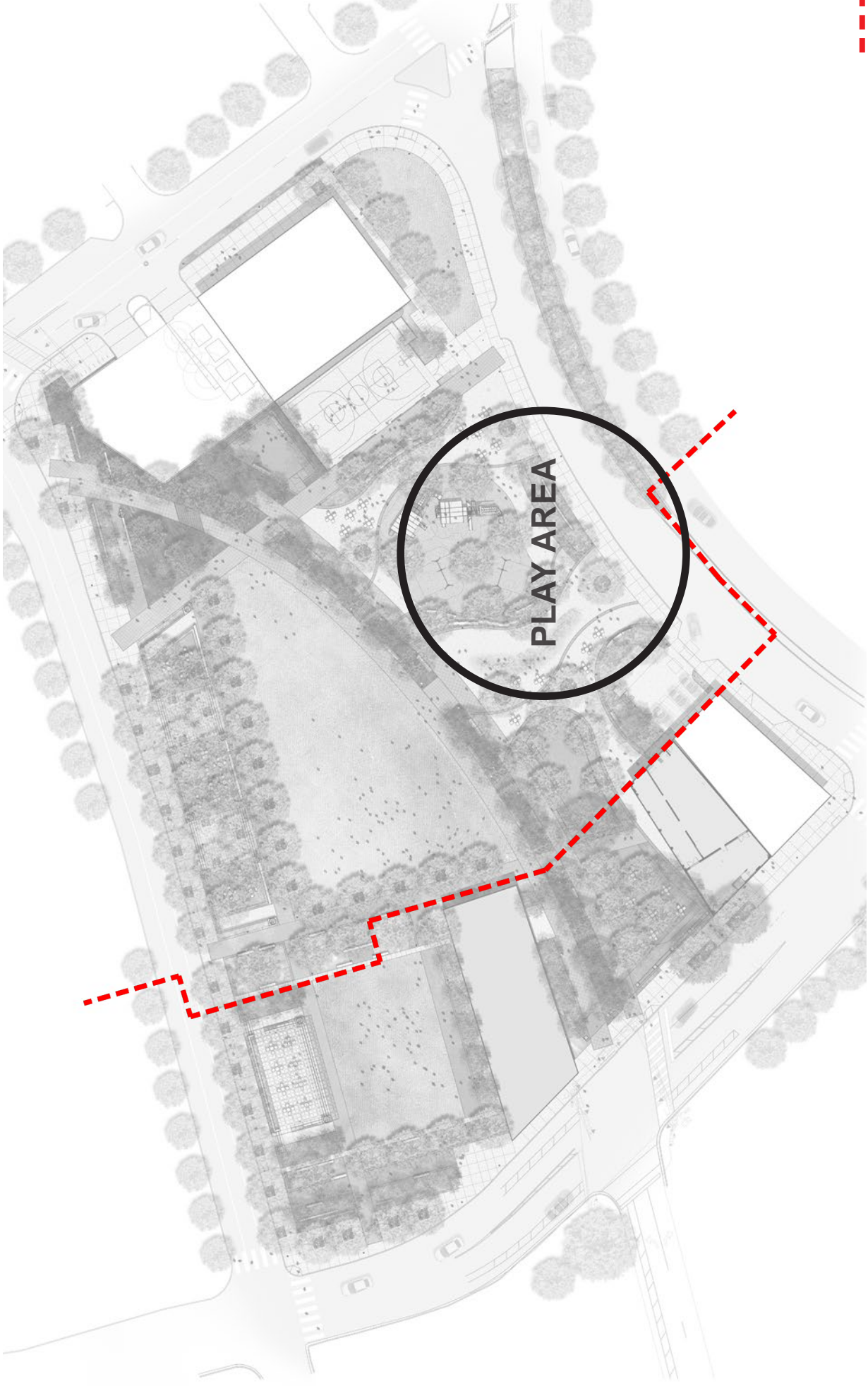
- 1 SIGNAGE WALL
- 2 DOG INTERCEPT
- 3 BENCH
- 4 BIKE RACKS
- 5 BUILDING ACCESS
- 6 ROW CONCRETE
- 7 EXISTING CURB CUT
- 8 SPORTS COURT
- 9 UNIT PAVING
- 10 SHADE TREES



ENLARGEMENT - SOUTH EAST CORNER

26 HARWOOD PARK | Dallas, TX
URBAN DESIGN PEER REVIEW PANEL





--- HARWOOD HISTORIC DISTRICT BOUNDARY

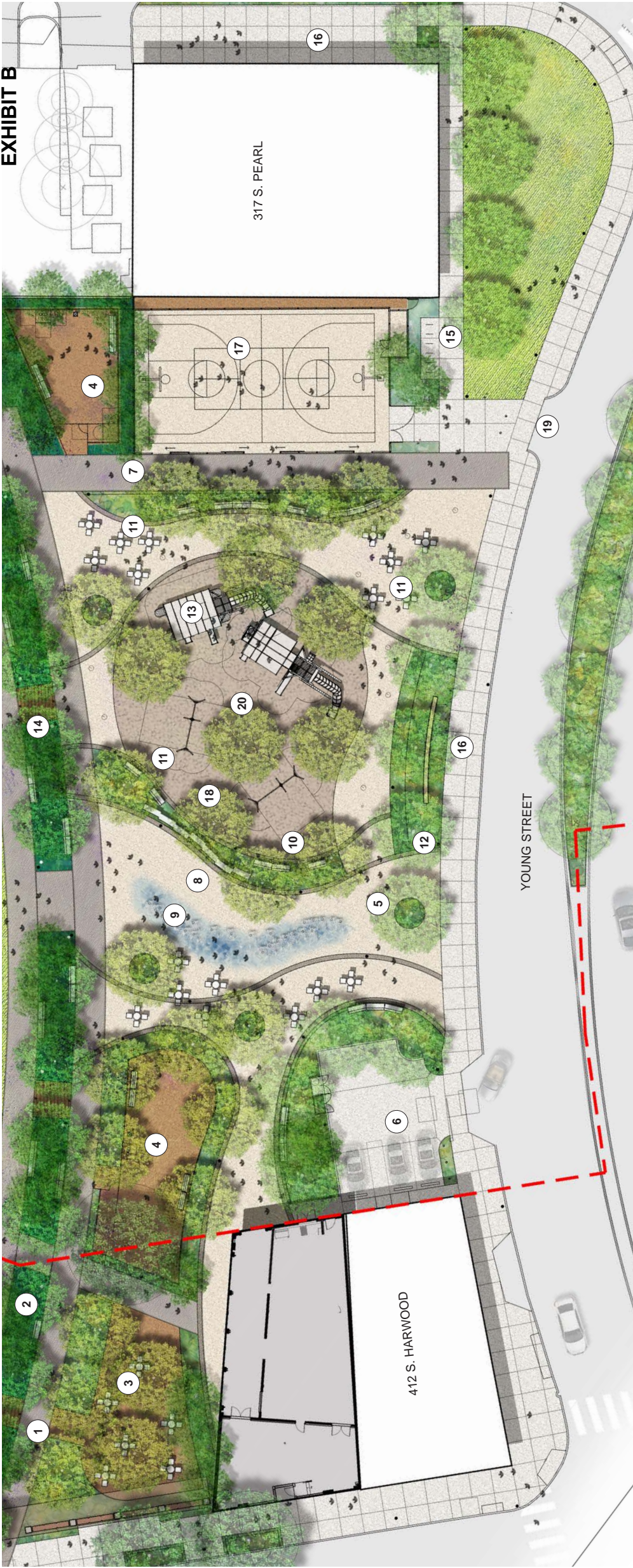
KEY PLAN

27 HARWOOD PARK | Dallas, TX
URBAN DESIGN PEER REVIEW PANEL



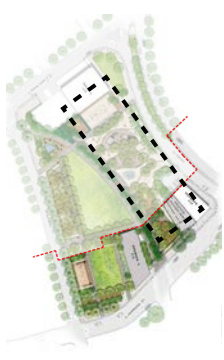
TEN EYCK
LANDSCAPE ARCHITECTS

EXHIBIT B



KEY

- 1 PROMENADE
 - 2 RAIN GARDEN
 - 3 GAMES COURT
 - 4 DOG PARK
 - 5 PLAZA
 - 6 PARKING
 - 7 UNIT PAVING
 - 8 BENCHES
 - 9 INTERACTIVE W.F.
 - 10 PLANTING AREA
 - 11 FLEXIBLE SEATING
 - 12 SHADE TREES
 - 13 PLAY STRUCTURE
 - 14 BRIDGE CROSSING
 - 15 BIKE RACKS
 - 16 R.O.W. SIDEWALK
 - 17 SPORTS COURT
 - 18 SWINGS
 - 19 EXISTING CURB CUT
 - 20 PLAY SURFACING
- - - HARWOOD HISTORIC DISTRICT BOUNDARY



ENLARGEMENT - PLAY AREA

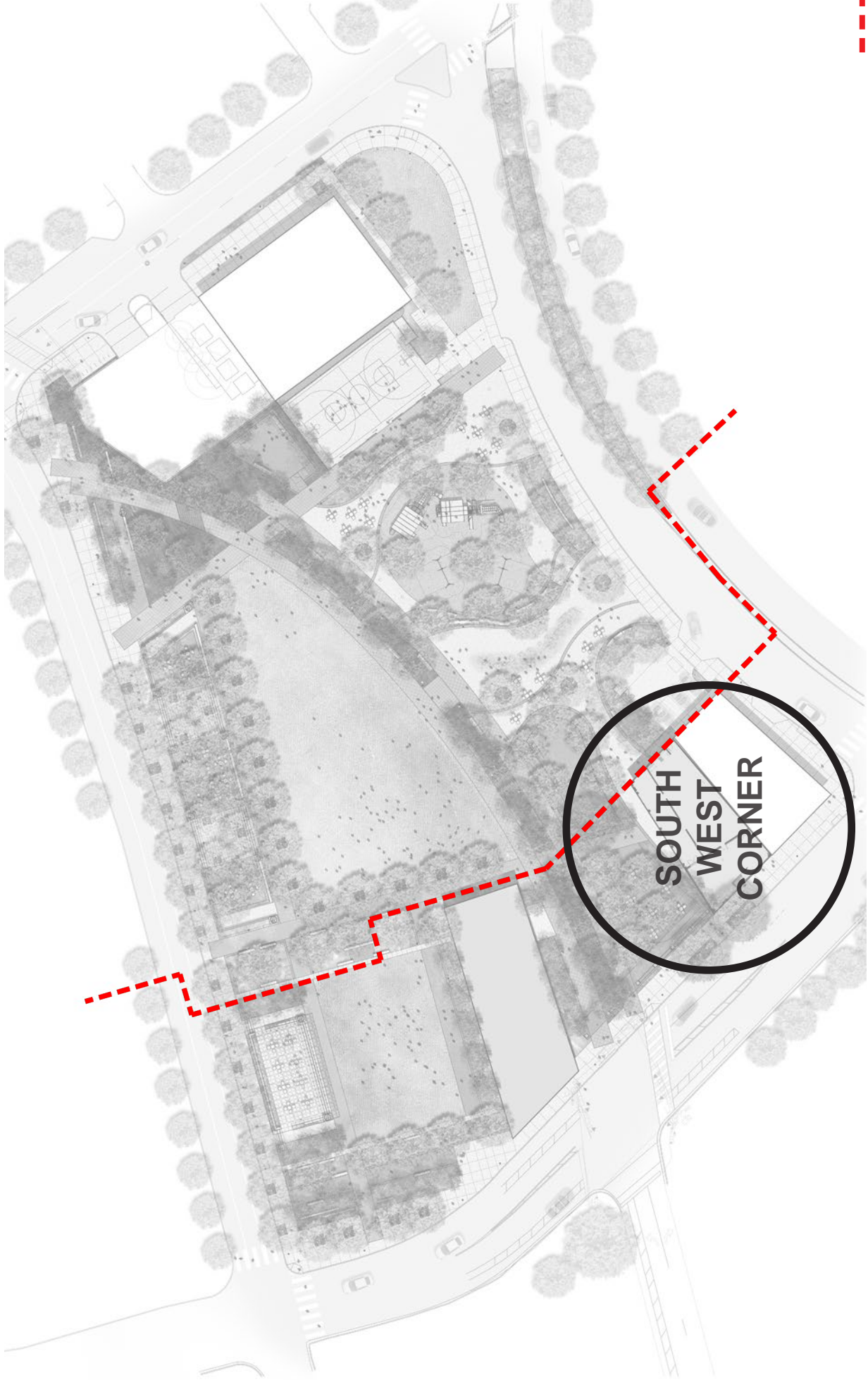


PERSPECTIVE - MAMMOTH PLAY STRUCTURES

EXHIBIT B



DETAILS - ADDITIONAL PLAY STRUCTURES



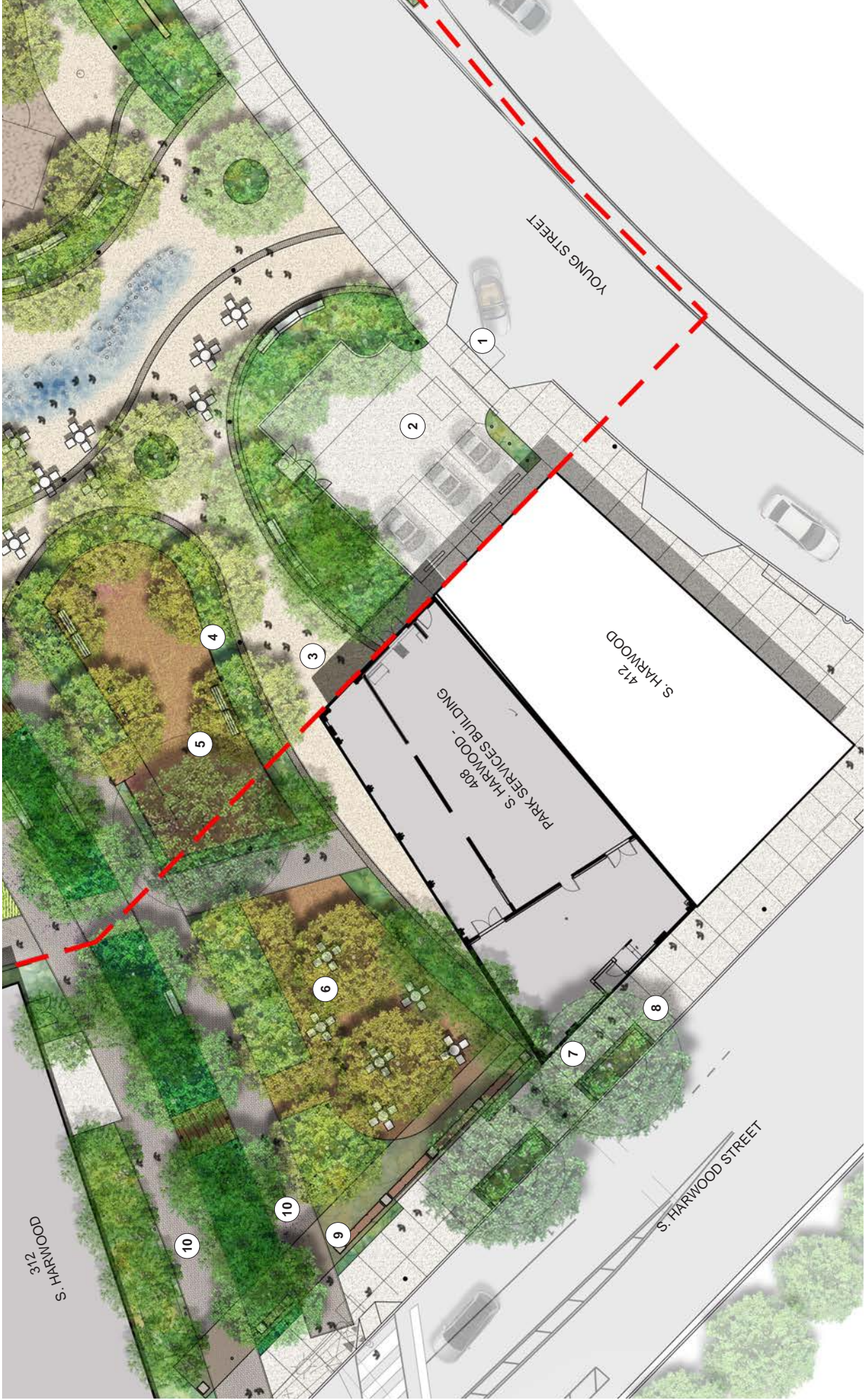
--- HARWOOD HISTORIC DISTRICT BOUNDARY

KEY PLAN

31 HARWOOD PARK | Dallas, TX
URBAN DESIGN PEER REVIEW PANEL

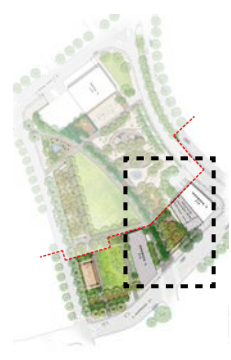


TEN EYCK
LANDSCAPE ARCHITECTS



KEY

- 1 EXISTING CURB CUT
- 2 PARKING
- 3 PLAZA
- 4 PLANTING AREA
- 5 DOG PARK
- 6 GAMES COURT
- 7 R.O.W. SIDEWALK
- 8 EXISTING SHADE TREES
- 9 S. HARWOOD TRELLIS
- 10 PROMENADE
- - - HARWOOD HISTORIC DISTRICT BOUNDARY



ENLARGEMENT - SOUTH WEST CORNER

32 HARWOOD PARK | Dallas, TX
 URBAN DESIGN PEER REVIEW PANEL

SCALE: 1" = 30'-0"





PERSPECTIVE - S. HARWOOD ST LOOKING NORTH

