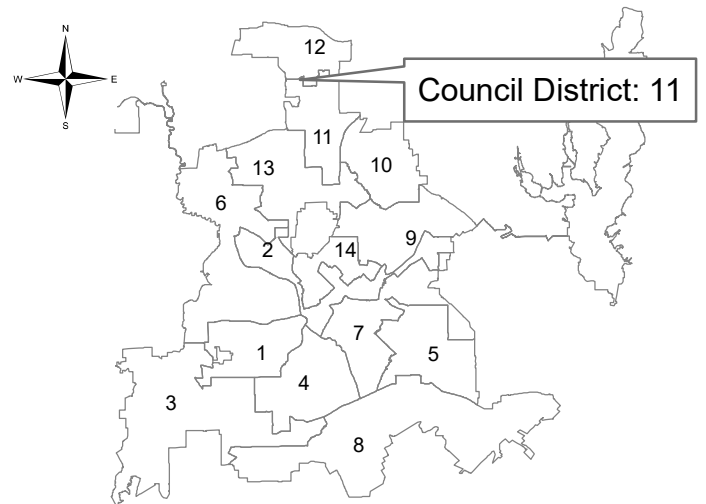
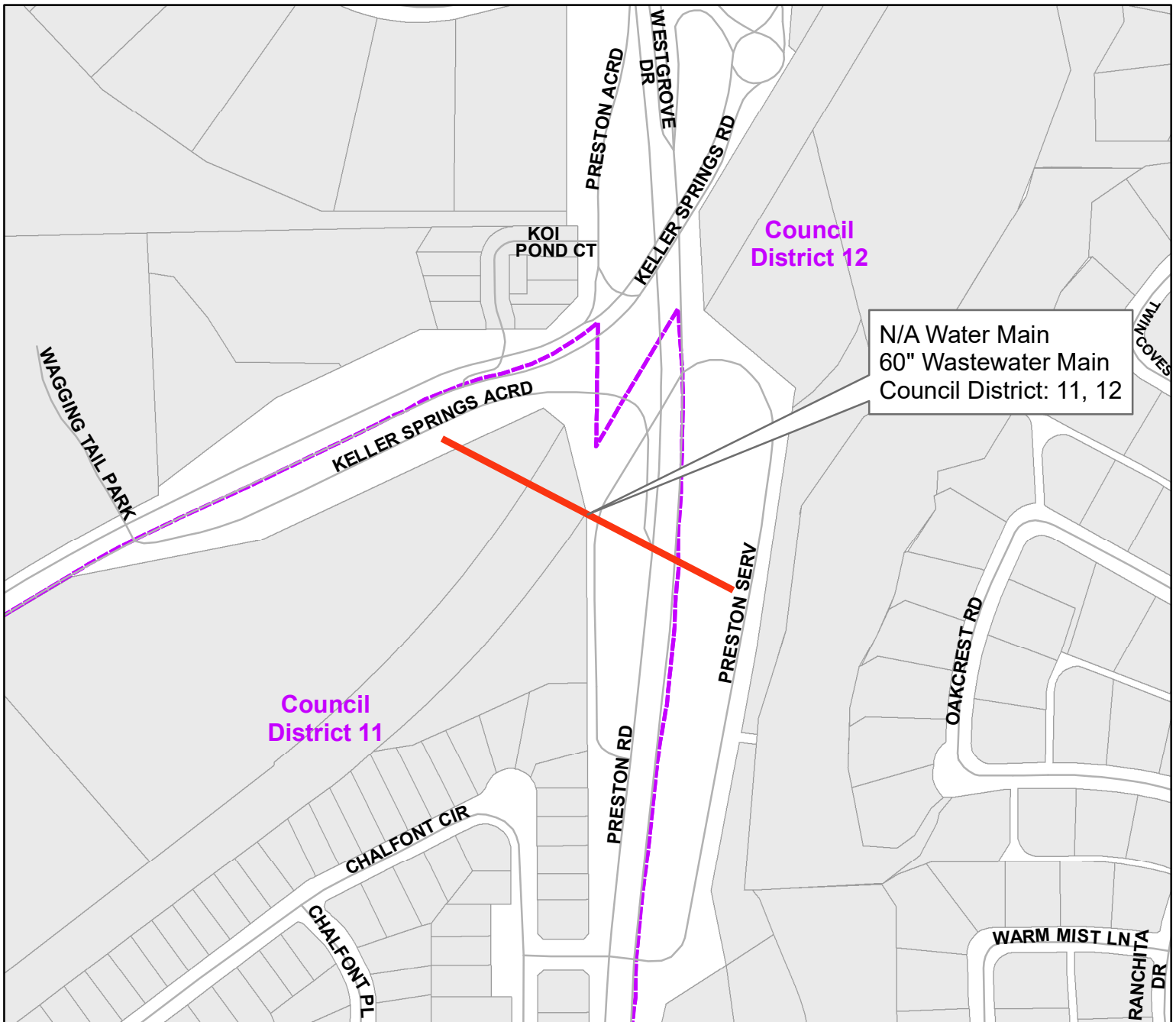


Easement southeast of Keller Springs
Access Road
from Keller Springs Access Road southwest

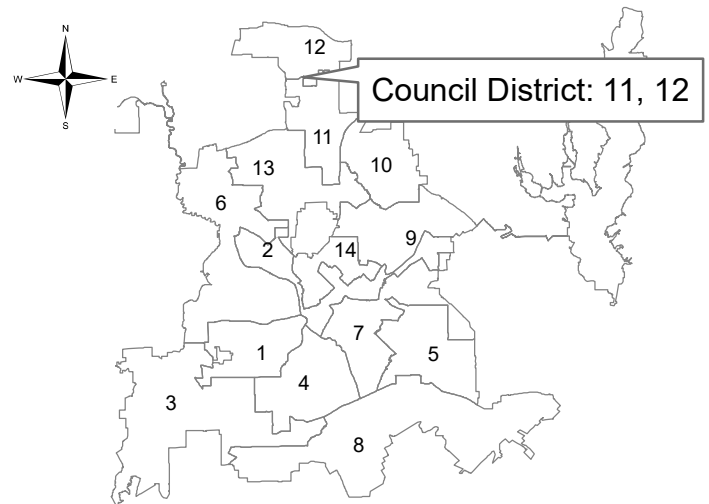


Dallas Water Utilities
Contract No. 25-188

McKamy & Osage Branch Wastewater Interceptor, Phase I

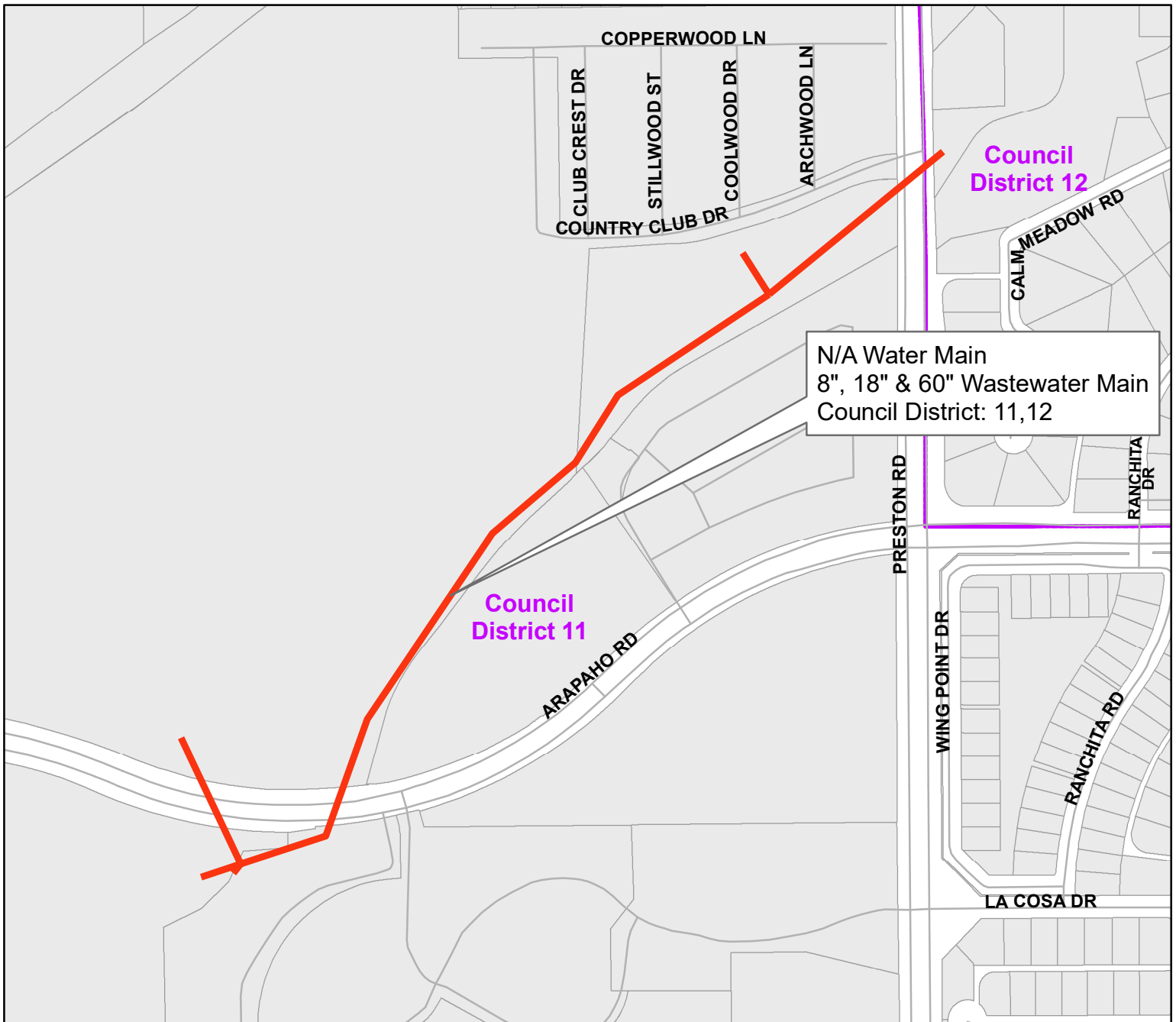


Easement southeast of Keller Springs
Access Road
from State Highway 289 (Preston Road)
SERV northwest

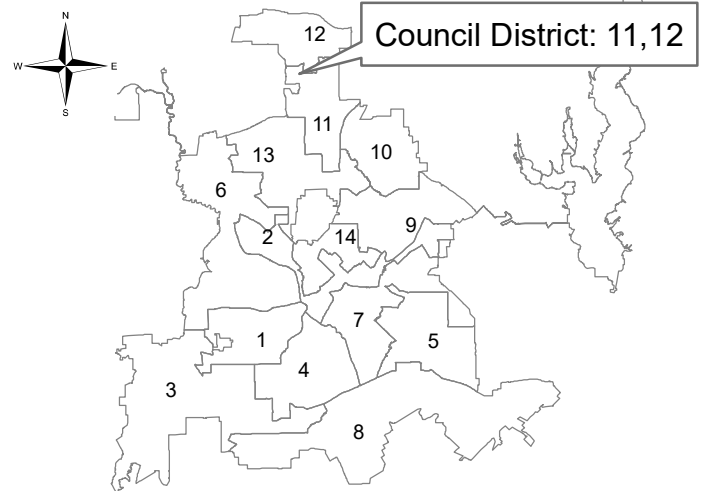


Dallas Water Utilities
Contract No. 25-188

McKamy & Osage Branch Wastewater Interceptor, Phase I

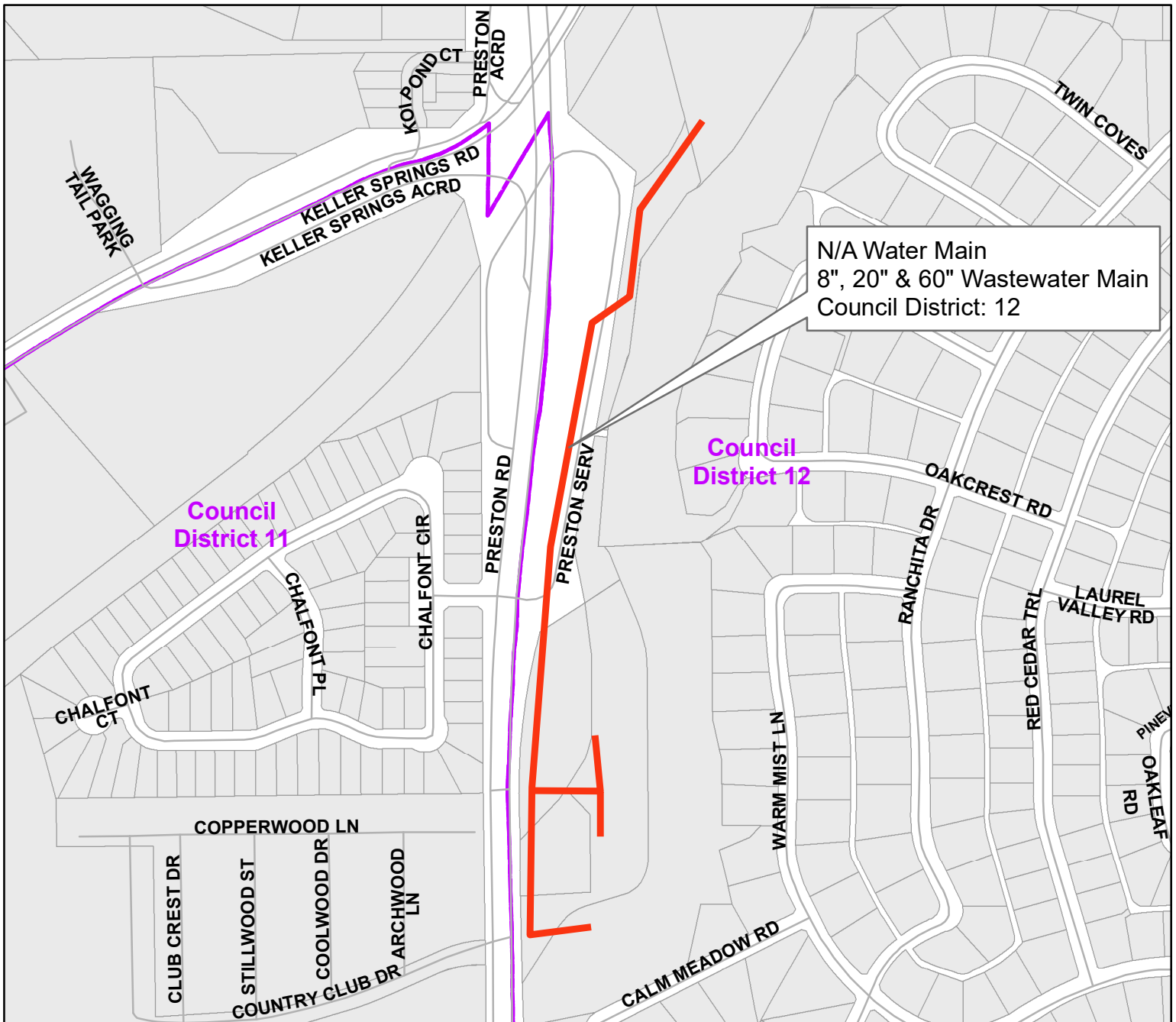


Easement west of State Highway 289
(Preston Road)
from south of Arapaho Road to State
Highway 289 (Preston Road)

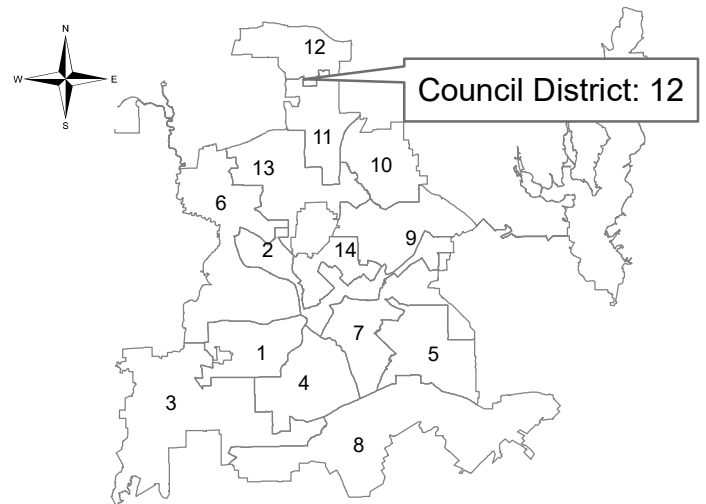


Dallas Water Utilities
Contract No. 25-188

McKamy & Osage Branch Wastewater Interceptor, Phase I



State Highway 289 (Preston Road)
from Easement east of Keller Springs
Access Road south



Dallas Water Utilities
Contract No. 25-188

McKamy & Osage Branch Wastewater Interceptor, Phase I