

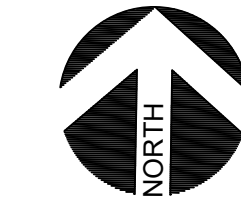
06/24/2024  
PROJECT NUMBER

CASE NUMBER



VICINITY MAP

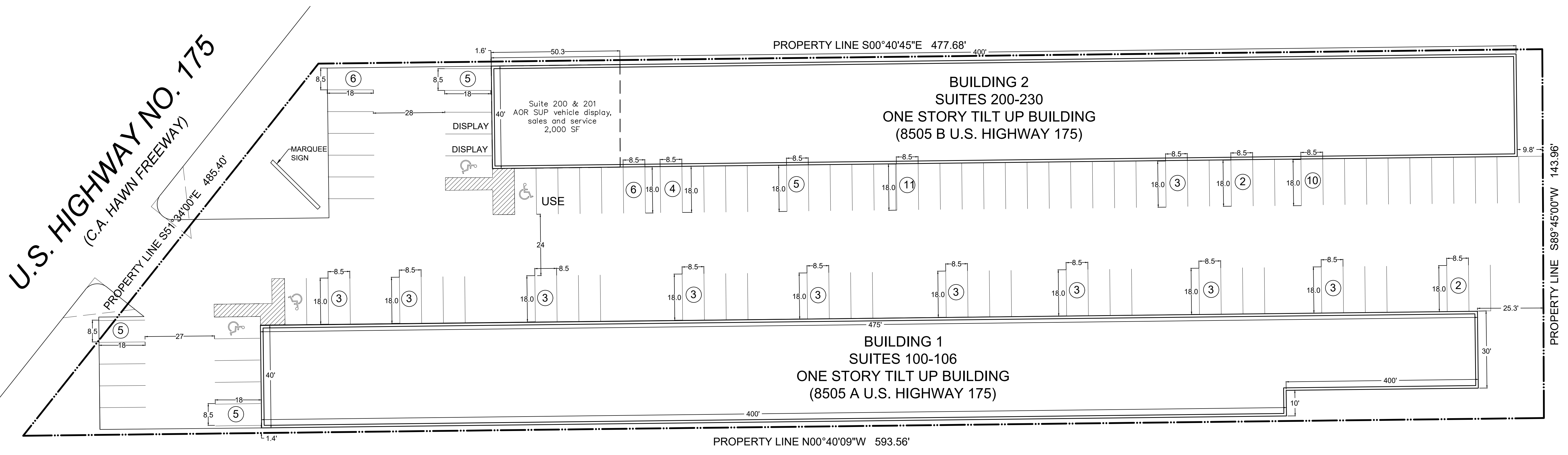
NTS



PROPOSED USE: SPECIFIC USE PERMIT - VEHICLE DISPLAY, SALES AND SERVICE

SITE DATA SUMMARY	
LOCATION	8505 C. F. HAWN FREEWAY
BLOCK	A/7873
LOT	LOT 1
SITE AREA, ACRES	1.77 ACRES
SITE AREA, SF	77,081
ZONING	PD 534, SUBDISTRICT 2A - C F HAWN SPECIAL PURPOSE DISTRICT NO. 2
BASE ZONING	CR, COMMUNITY RETAIL DISTRICT
SUP 1968	SPECIFIC USE PERMIT FOR OFFICE, WAREHOUSE SHOWROOM USE
SUP VEHICLE DISPLAY, SALES AND SERVICE LIMITED TO	2,000 SF
BUILDING SF	34,250
FAR	0.44
HEIGHT	25 FT
STORIES	1

PARKING			
USE	SF	PARKING RATIO	PARKING REQUIRED
OFFICE WAREHOUSE/SHOWROOM	12,200	1:333 OFFICE/1:1000 SHOWROOM/WAREHOUSE	16
INDUSTRIAL LIGHT MANUFACTURING (INSIDE)	2,000	1:600	3
VEHICLE OR ENGINE REPAIR OR MAINTENANCE	4,000	1:500, not less than 5	20
OFFICE BLDG	1,000	1:333	3
VEHICLE DISPLAY, SALES AND SERVICE	2,000	1:500 DISPLAY/SUITE	4
		<b>PARKING REQUIRED</b>	<b>46</b>
		<b>PARKING PROVIDED</b>	<b>91</b>



U.S. HIGHWAY NO. 175  
(C.A. HAWN FREEWAY)

**SUP SITE PLAN**  
SCALE: 1" = 20'-0"



BALDWIN ASSOCIATES  
3904 Elm Street, Suite B  
Dallas, Texas 75226  
MOBILE: 214.729.7949  
OFFICE: 214.824.7949  
rob@baldwinplanning.com

**Baldwin Associates**

8505 CF HAWN FREEWAY  
CITY OF DALLAS, TEXAS