



Dallas Greening Initiative Updates:

Community Engagement, Design, & Implementation Progress

Closing the park access gap for Dallas

Parks, Trails, and the Environment
Monday, April 7, 2025

PS 156 Waverly and LS 392 Brooklyn, NY

We saw these barren asphalt schoolyards and we recognized an amazing opportunity to reinvent them as vibrant city parks.

Photo by: Joe Martinez



Our mission:
Connecting everyone to the outdoors



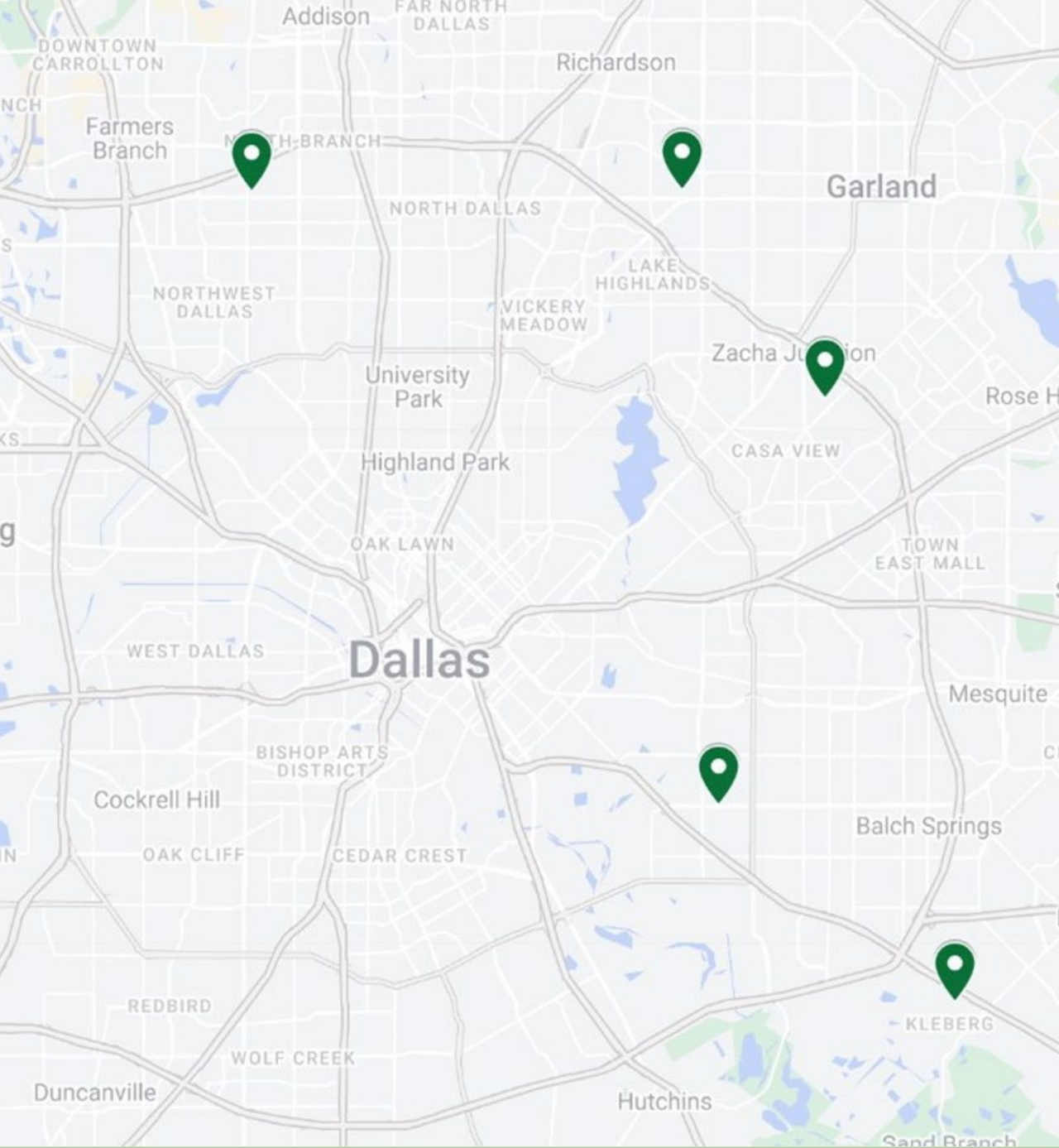
Connecting everyone to the outdoors™

What is the Dallas Greening Initiative?

An initiative to transform city-owned land into neighborhood greenspaces to:

- Increase the number of Dallas residents who have a park within a 10-minute walk of their home
- Improve the health, equity, and climate resilience of neighborhoods throughout the city through the creation of neighborhood public greenspaces located in Dallas's largest and highest-need areas
- Ensure that the nearby residents are part of the process





Cohort 1 Sites

- D5: 7327 Lake June Rd, Dallas, TX 75217
- D8: 2100 Echo Lake Dr, Dallas, TX 75253
- D9: 3749 Cotillion Dr, Dallas, TX 75228
- D10: 10600 Black Walnut Dr, Dallas, TX 75243
- D13: 3728 High Vista Dr, Dallas, TX 75244

Site Criteria

- Using TPL's Smart Growth for Dallas tool, these locations were selected based on:
 - Vacancy
 - City-owned status
 - Park access gaps
 - Urban heat islands
 - Health disparities
 - Equity indicators



Timeline

2023

- Mayor Johnson committed \$1.25 million in ARPA funding to support program
- TPL raised an additional \$1.25 million which allowed us to proceed with first 5 locations
 - *\$1,000,000 from Lyda Hill Foundation*
 - *\$250,000 from Meadows Foundation*
- Worked with City of Dallas to identify location opportunities for community greenspaces and finalized Cohort 1
 - Locations include properties in District 5, 8, 9, 10, and 13 which will serve a total of **14,843** residents within a 10-minute walk



Timeline

2024

- Locations were made public and community engagement process began
- Schematic designs for first 5 sites were completed and reviewed by City partners
- Worked with the City of Dallas to refine design-build model and implementation strategies to deliver greenspaces more efficiently

2025

- Facilities set to break ground at first site in June 2025
- TPL is actively working with the City to finalize construction documents, schedule construction, procure equipment, and identify an alternative vendor to build out remaining four sites
- Greenspace Dallas will start site prep for the remaining sites this summer

Community Engagement



- Over the last year TPL has connected with community members to inform the design process through community meetings, online engagement tools, and surveys.
- **Meeting 1: Site Overview + Amenities**
 - Received community feedback concerning existing space, current/future use, amenity choices and locations
- **Meeting 2: Pop-Up Park with Better Block**
 - Sites were transformed through temporary amenities allowing residents to give real-time feedback on conceptual design options through interactive activities
- **Meeting 3: Design Unveiling + Placemaking**
 - Received community feedback on final design, park activation, and stewardship
- Through the 10-Minute Walk® Park Equity Accelerator (PEA), TPL will continue to work with Dallas Parks and Recreation to engage with neighbors to develop community-led maintenance and stewardship models



Schematic Designs



LAKE JUNE ROAD GREEN SPACE

SCHEMATIC DESIGN | POP-UP PARK FEEDBACK SUMMARY

PLAN OPTIONS



TOP IMAGES



TOP COMMENTS

- I LIKE THAT **PEOPLE CAN DO LAPS** AROUND THE ENTIRETY OF THE PARK
- I REALLY LOVE THE AREA **OVERLOOKING THE CULVERT MURAL**
- I LIKE THE **AMOUNT OF TREES**
- THE LAYOUT ENCOURAGES A **SPACE OF LEISURE** FOR THE COMMUNITY
- LOVE THE **NATIVE PLANTING AREA**
- THIS WILL BE A GREAT FIT FOR **YOUNG FAMILIES**
- **GOOD CONNECTION AND FLOW** BETWEEN THE DIFFERENT PROGRAMMING AREAS
- I LIKE THE **SHADE STRUCTURE** AND SPACE UTILIZATION
- THE LARGE/SEPARATE PLAY AREAS FOR **DIFFERENT GENERATIONS** ARE A PLUS

LAKE JUNE ROAD GREEN SPACE

SCHEMATIC DESIGN | OVERVIEW AND PLAN

PARK AREA:

0.6 ACRES

PROGRAM LEGEND:

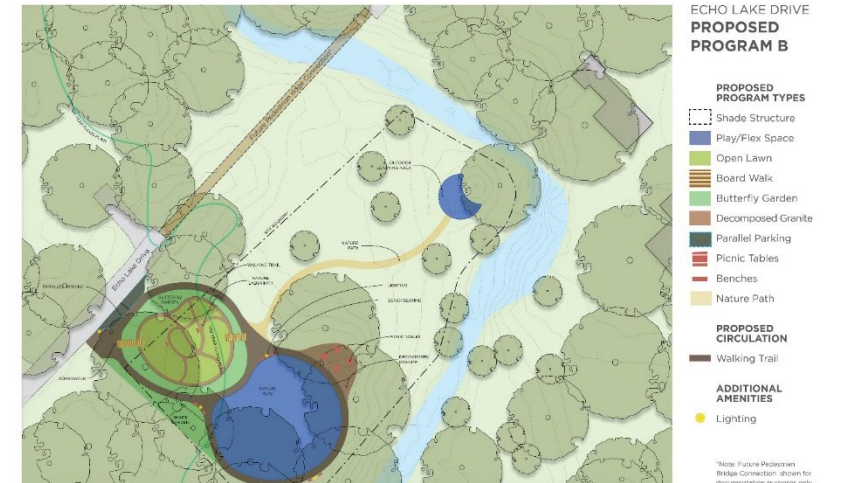
- A ENHANCED PAVING AT ENTRY
- B OPEN LAWN
- C ENHANCED PAVING AT PAVILION AND PICNIC AREA
- D OVERLOOK TO CULVERT MURALS
- E MURAL WALLS
- F 2-5 YEARS PLAY AREA
- G 5-12 YEARS PLAY AREA
- H NATIVE SHADE SEEDING AREA (TYP.)
- I NATIVE SUN SEEDING AREA (TYP.)
- J BUTTERFLY GARDEN WITH ORNAMENTAL TREES
- K PROPOSED SHADE TREES (TYP.)
- L TRASH RECEPTACLE



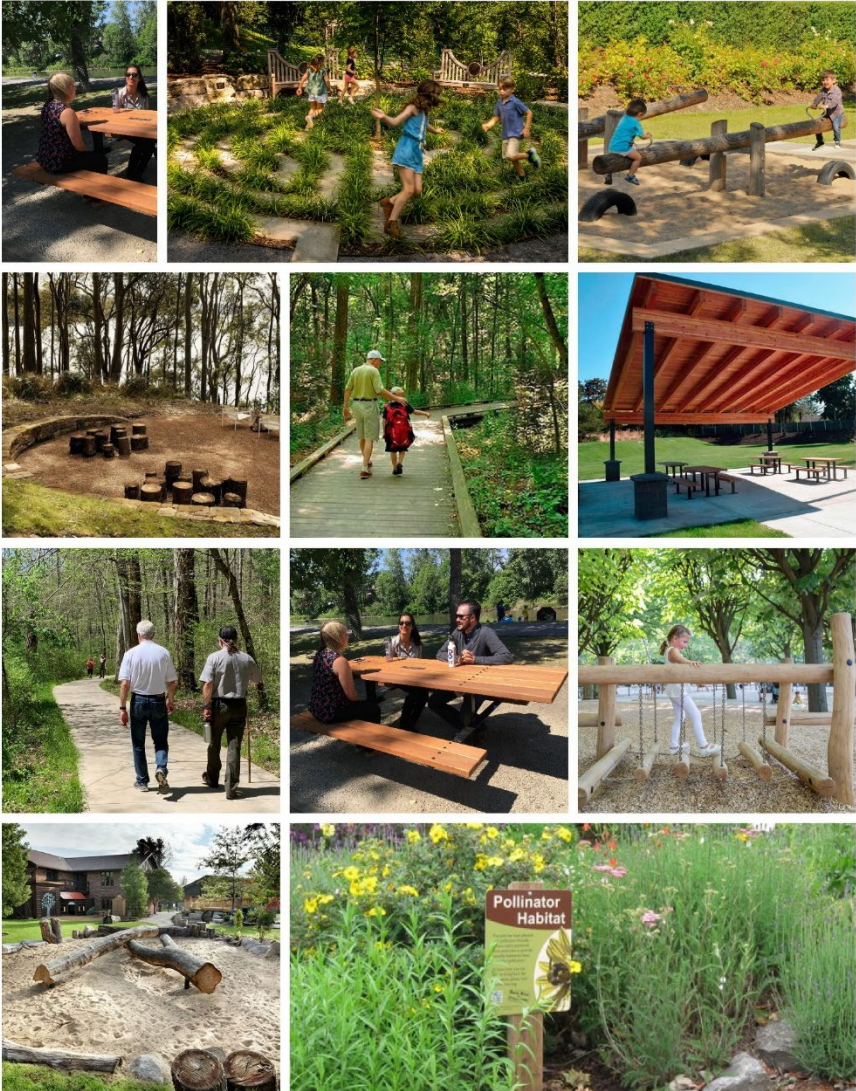
ECHO LAKE DRIVE GREEN SPACE

SCHEMATIC DESIGN | POP-UP PARK FEEDBACK SUMMARY

PLAN OPTIONS



TOP IMAGES



TOP COMMENTS

- I LIKE THE **SPLIT PLAY AREAS** FOR YOUNGER AND OLDER CHILDREN
- I LIKE THE ADDITION OF A **SHADE STRUCTURE**
- I LIKE THAT THERE IS AN **OPEN SPACE** FOR KIDS TO RUN AROUND
- I LOVE THE **NATURE TRAIL** FOR HIKING
- THERE IS A NEED FOR **BETTER CONNECTION TO THE COMMUNITY**
- LOVE THE **CIRCLE TRAIL**
- I LIKE THE OPTION TO **WALK AND EXPLORE**
- I LIKE THAT BOTH OPTIONS HAVE **BENCHES, PICNIC TABLES, AND LIGHTING**

ECHO LAKE DRIVE GREEN SPACE

SCHEMATIC DESIGN | OVERVIEW AND PLAN

PARK AREA:

0.84 ACRES

PROGRAM LEGEND:

- A ENTRY
- B PAVILION AND PICNIC AREA
- C PLAYGROUND AREA
- D PLAY LAWN
- E SEATING (TYP.)
- F NATURAL PLAY AREA
- G DECOMPOSED GRANITE PATH
- H BUTTERFLY GARDEN
- I NATURAL WALKING/EXPLORATION TRAIL



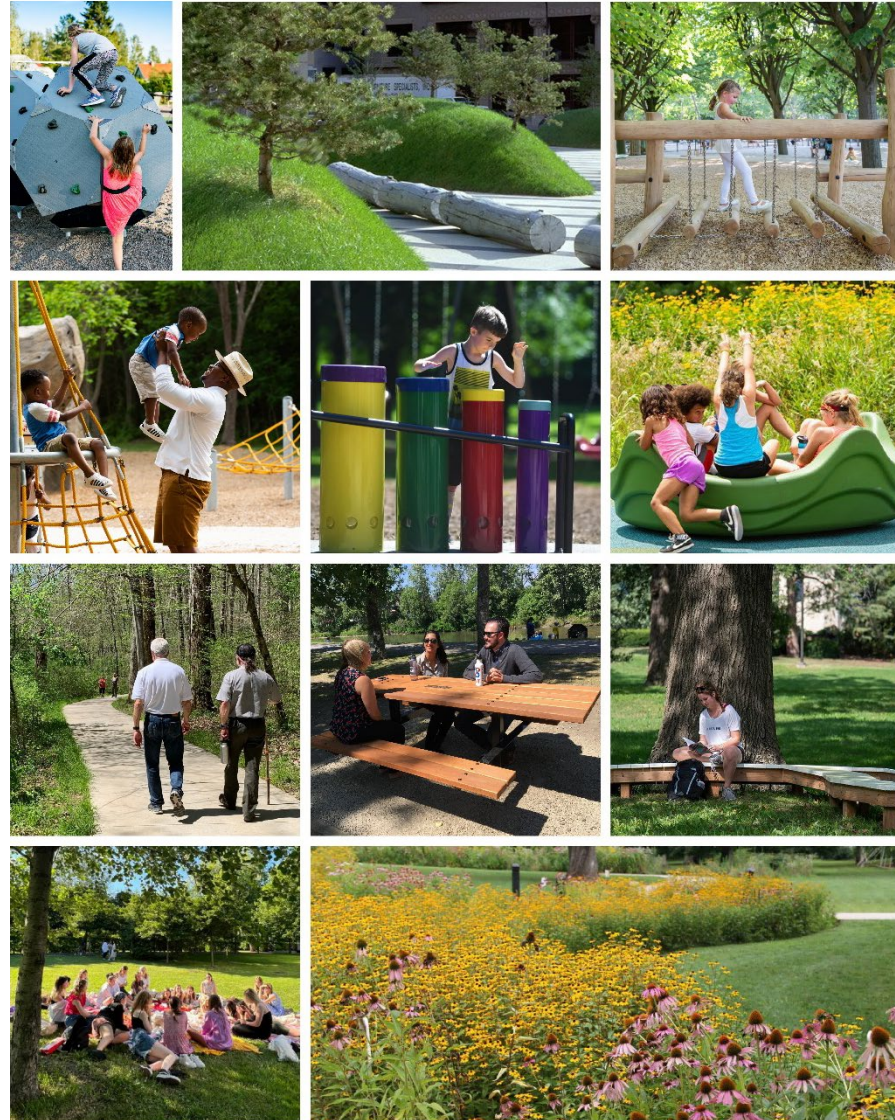
COTILLION DRIVE GREEN SPACE

SCHEMATIC DESIGN | POP-UP PARK FEEDBACK SUMMARY

PLAN OPTIONS



TOP IMAGES



TOP COMMENTS

- I LIKE THE **OPEN LAWN** SINCE KIDS PLAY A LOT OF SOCCER
- I LOVE THE **POLLINATOR GARDEN**
- I LIKE BARRIER NEAR THE PLAYGROUND FOR **KEEPING KIDS SAFE** FROM THE STREET
- THE BEST WALKING AREA WILL BE **ALONG THE TREE LINE** AWAY FROM THE ROAD
- A GOOD SPACE TO WORK ON THINGS LIKE **LEARNING TO RIDE A BICYCLE**
- I LIKE THE **TWO PLAY AREAS**
- I LIKE THE **LAWN SPACE FOR FREE PLAY**
- WE NEED **SHADE** AND REALLY NEED **BARRIERS FROM THE STREET**

COTILLION DRIVE GREEN SPACE

SCHEMATIC DESIGN | OVERVIEW AND PLAN

PARK AREA:

0.6 ACRES

PROGRAM LEGEND:

- A VEGETATIVE SCREEN
- B PLAYGROUND AREA
- C PICNIC AREA
- D PLAY LAWN
- E SAFETY BUFFER SEATING (LIMESTONE BLOCKS)
- F NATURAL PLAY AREA
- G DECOMPOSED GRANITE GARDEN PATH
- H BUTTERFLY GARDEN
- I WALKING TRAIL (CONCRETE, TYP.)
- T TRASH RECEPTACLE



RUIDOSA AVENUE

COTILLION DRIVE

BUSHMILLS ROAD GREEN SPACE

SCHEMATIC DESIGN | POP-UP PARK FEEDBACK SUMMARY

PLAN OPTIONS



TOP IMAGES



TOP COMMENTS

I LIKE **WALKING TRAILS**
 I REALLY LIKE THE **POLLINATOR GARDEN** AND **NATIVE GRASS** AND **WILDFLOWER MIX**
 I LIKE THE **VEGETATION SCREEN** NEAR THE ALLEY
 WANT TO CONNECT WITH **NATURE**
 I WANT TO FEEL **RELAXED** IN THE SPACE

I LIKE THE **PICNIC AREA**
 I LIKE THAT THIS OPTION HAS A MIX OF **PLAY** AND **NATURAL ELEMENTS**
 NEED **SEATING** NEAR THE **VIEWS** ALONG THE CREEK
 WE NEED **PARKING** AND **BOLLARDS** NEAR THE CUL DE SAC

BUSHMILLS ROAD GREEN SPACE

LANDSCAPE | SCHEMATIC DESIGN

LEGEND

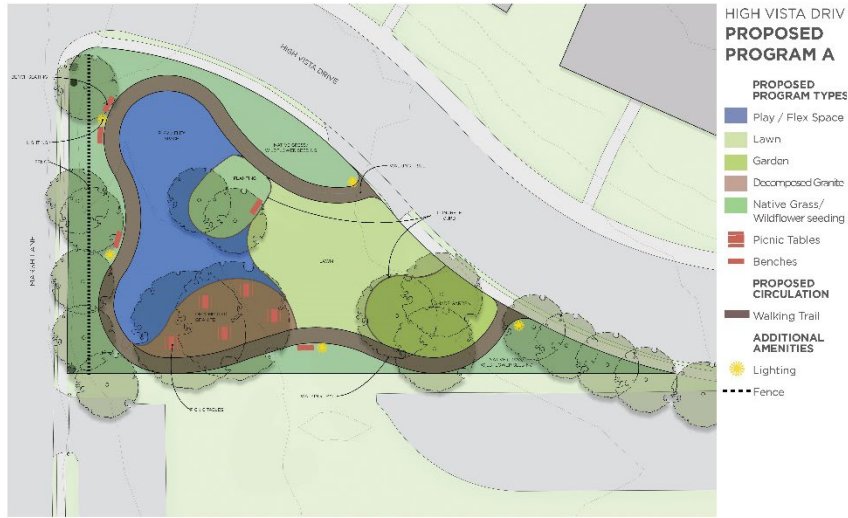
- A POLLINATOR GARDEN
- B OPEN LAWN
- C NATIVE GRASS & WILDFLOWER SEED
- D DECOMPOSED GRANITE PICNIC AREA
- E VEGETATIVE SCREEN
- F BENCHES
- G CONCRETE WALKING TRAIL
- H LIGHT POLE & CAMERA
- I WILDLIFE VIEWING STATION
- J FUTURE PHASE (BRIDGE)
- K NATURE PLAY AREA
- L NATURAL WALKING/EXPLORATION TRAIL
- M DECK OVERLOOK



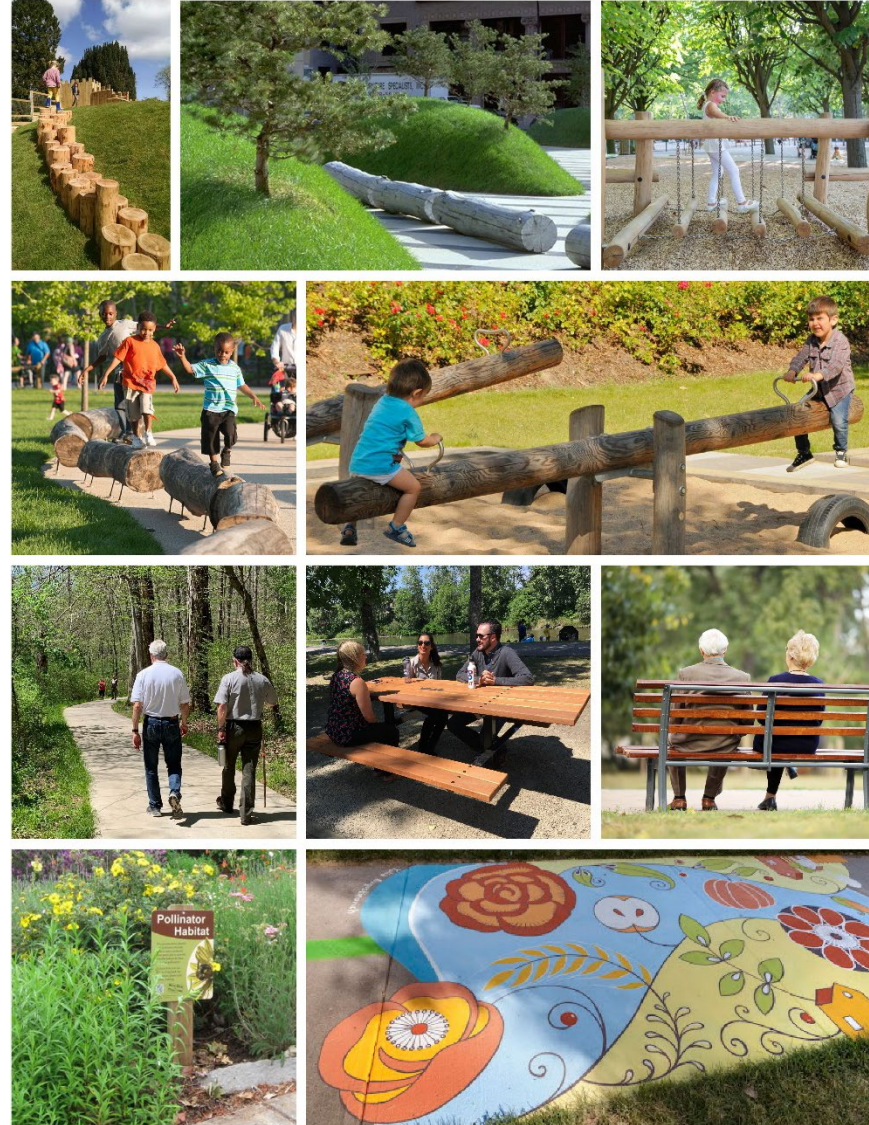
HIGH VISTA DRIVE GREEN SPACE

SCHEMATIC DESIGN | POP-UP PARK FEEDBACK SUMMARY

PLAN OPTIONS



TOP IMAGES



TOP COMMENTS

- I LOVE THE **WALKING TRAIL LOOP**
- I REALLY LOVE THE **NATIVE GRASS AND WILDFLOWER PLANTINGS**
- I LIKE THAT THE PLAY AREA IS **AWAY FROM MARSH**
- THE OPEN LAWN SPACE **ENCOURAGES RANDOM ACTIVITIES**
- I LIKE THE **ORGANIC SHAPES** OF THE DIFFERENT AREAS
- I LIKE THE **NATURAL FEEL** TO THE SITE
- I LOVE THE **SHADE AREAS**
- IT WOULD BE NICE TO HAVE A **BIKE RACK**
- I WOULD LIKE TO HAVE A **DOG WASTE STATION**

HIGH VISTA DRIVE GREEN SPACE

SCHEMATIC DESIGN | OVERVIEW AND PLAN

LEGEND

PARK AREA:

0.4 ACRES

PROGRAM LEGEND:

- A POINT OF ENTRY
- B SEAT WALLS (TYP.)
- C PLAYGROUND AREA
- D PICNIC AREA ON DECOMPOSED GRANITE
- E BUTTERFLY GARDEN
- F PRESERVED TREES (TYP.)
- G NATIVE SEEDING AREA (TYP.)
- T TRASH RECEPTACLE





Next Steps

- TPL to finalize needed additional construction documents
- Work with Park and Recreation to contract with alternative vendor for remaining sites, procure equipment, and schedule construction
 - Cohort 1 sites set to be completed in the next 12-14 months
- Continue engagement with neighborhoods on establishing “Friends of” groups for each site
- Planning for Cohort 2 will begin Fall/Winter 2025



**TRUST FOR
PUBLIC
LAND™**

Connecting everyone to the outdoors™

Thank you

Molly Morgan | Texas State Director | molly.morgan@tpl.org

Sofia Hernandez | Dallas Greening Initiative Program Manager | sofia.hernandez@tpl.org