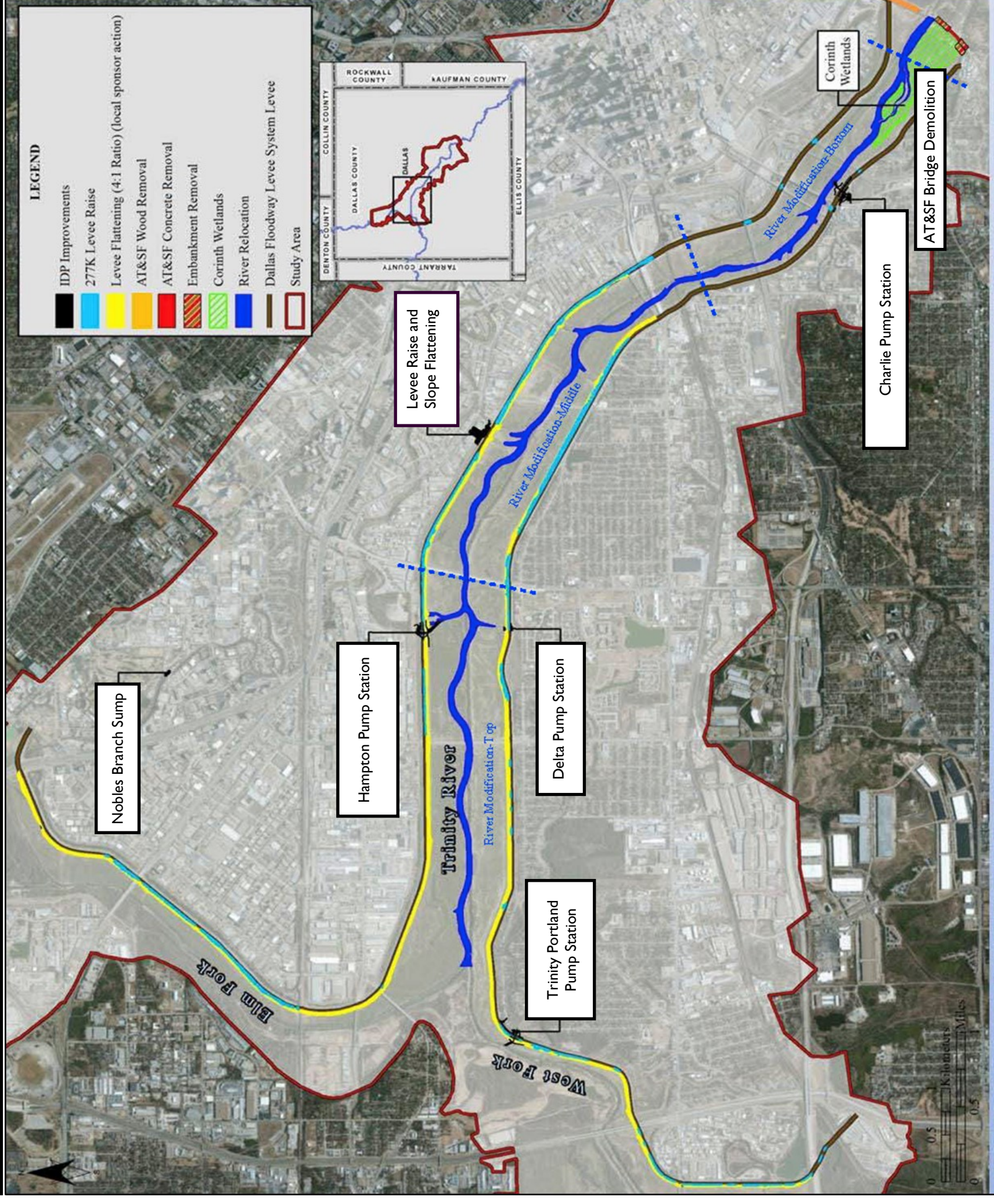


Dallas Floodway



MODIFIED DALLAS FLOODWAY PROJECT - REFERENCE MAP AND RECOMMENDED PLAN

AUTHORIZATION WRDA 2007, PL 110-114, SECTION 5141

FRM PROJECT FEATURES STATUS

AT&SF BRIDGE DEMOLITION

- Awarded Amount: \$1,702,819 (Design Bid Build)
- Status: Construction Completed February 2021

277K CFS LEVEE RAISE AND SLOPE FLATTENING

- Award to SWVC for \$55,990,600 (Design-Build)
- Status: In construction; Scheduled Completion: Early 2025
- Raise the East & West Levees and flatten riverside slopes to 4:1

TRINITY PORTLAND PUMP STATION

- Awarded to RKE Inc for \$59,165,000 (Design-Build)
- Status: Terminated November 2023 for environmental issues
- Developing new procurement plan for FY26
- “New Build” pump station
- 2 – 125,000 gpm concrete volute pumps

CHARLIE PUMP STATIONS

- Awarded to LGC Global for \$63,559,380 (Design-Build)
- Status: In construction; Construction Completion: Late 2025
- “New Build” pump station and demolish existing pump station
- 3 – 75,000 gpm concrete volute pumps
- 1 – 6,000 gpm low flow sump pump

NOBLES BRANCH SUMP

- Estimated Award Amount: \$5-10M (Design-Build)
- Status: In Solicitation; Construction Completion: Mid 2026
- Add 4 – 60 inch culverts with sluice gates under Empire Central Dr
- Replace existing sluice gate and headwall; realign piping w/ culverts

DELTA PUMP STATION

- Estimated Award Amount; \$10-15M (Design-Build)
- Status: In Solicitation; Construction Completion: Mid 2027
- Building replacement
- 2 replacement pumps - 700HP
- Upgraded electrical, HVAC, trash rack, and access road

HAMPTON PUMP STATIONS

- Estimated Award Amount: \$130-145M (Design Bid Build)
- Status: Pre-Solicitation; Construction Completion: Late 2029
- “New Build” pump station, renovate existing station, demo station
- New station: 5 - 140,000 gpm concrete volute pumps