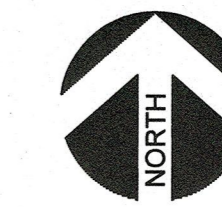


VICINITY MAP

NTS



10/03/2023

PROJECT NUMBER

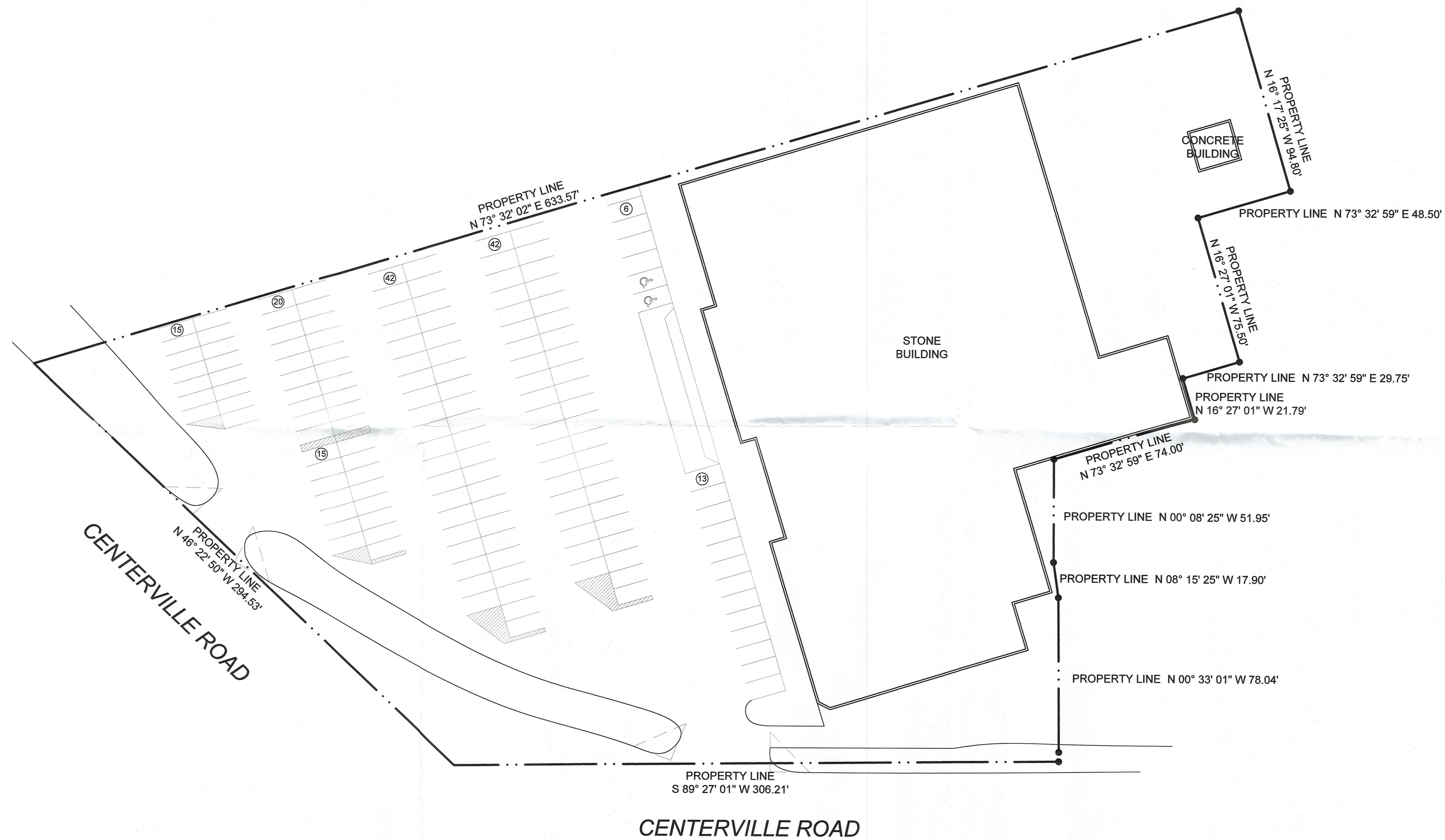
CASE NUMBER

BALDWIN ASSOCIATES

3904 Elm Street, Suite B
Dallas, Texas 75226
MOBILE: 214.729.7949
OFFICE: 214.824.7949
rob@baldwinplanning.com

Baldwin
Associates

10710 Garland Road
CITY OF DALLAS, TEXAS



SPECIFIC USE PERMIT SITE PLAN DATA	
10710 Garland Road	
EXISTING ZONING	PD-7
USE	vacant; former grocery store
PROPOSED USE	Commercial Amusement Inside
LEASE SPACE SQUARE FOOTAGE	38,000
TOTAL BUILDING SQUARE FOOTAGE	46691
PARKING	
PARKING REQUIRED	380
PARKING PROVIDED	153
LEGAL	Tract 46 Block 5361
LOT SIZE	3.183 acres

