

CITY PLAN COMMISSION

THURSDAY, April 23, 2026

FILE NUMBER: PLAT-26-000098

SENIOR PLANNER: Hema Sharma

LOCATION: Furlong Drive and Walton Walker Boulevard, at terminus of Beau Purple Drive

DATE FILED: March 26, 2026

ZONING: LO-3

CITY COUNCIL DISTRICT: 3

SIZE OF REQUEST: 4.56-acres

APPLICANT/OWNER: The Israel of God

REQUEST: An application to create one 4.56-acre lot from a tract of land in City Blocks 7665 and 7667 on property located between Furlong Drive and Walton Walker Boulevard, at terminus of Beau Purple Drive.

SUBDIVISION HISTORY:

1. S234-039 was a request southeast of the present request to replat a 6.590-acre tract of land containing all of Lot 5 in City Block A/7665 to create 3 lots ranging in size from 1.103 acre to 3.166 acre on property located on Preakness Lane, east of Walton Walker Boulevard/ State Highway Loop No.12. The request was approved on January 18, 2024 but has not been recorded.

STAFF RECOMMENDATION: The request complies with the requirements of the LO-3 Light Office 3 District; therefore, staff recommends approval of the request subject to compliance with the following conditions:

General Conditions:

1. The final plat must conform to all requirements of the Dallas Development Code, Texas Local Government Code, Texas Land Surveying Practices Act and the General Rules and Regulations of the Texas Board of Land Surveying.
2. Department of Development Services, Engineering Division must verify that the plat conforms with the water, wastewater, and easement requirements under the provisions of Chapter 49 of the Dallas City Code.
3. Compliance with all plans, contracts, ordinances, and requirements of the City of Dallas. *Section 51A-8.102(a), (b), (c), and (d)*
4. The number and location of fire hydrants must comply with the Dallas Fire Code.
5. Any new or existing structure may not extend across new property lines. *Section 51A-8.503(e)*
6. On the final plat, all easement abandonments, and ROW abandonments must be by separate instrument with the recording information shown on the face of the plat. A release from the Real Estate Division is required prior to the plat being submitted to the Chairman for signature.

7. On the final plat, include two boundary corners tagged with these coordinates: "Texas State Plane Coordinate System, North Central Zone, North American Datum of 1983 on Grid Coordinate values, No Scale and no Projection."
8. On the final plat, monument all set corners per the Monumentation Ordinance. Prior to submittal of the final plat for the Chairman's signature. The monuments must be verified by the Chief City Surveyors Office in the Public Works Department. *Section 51A-8.617*
9. Provide ALL supporting documentation (i.e. deeds, plats, ordinances, easements...etc) with a completed Final Plat Checklist to the Survey Plat Review Group (**SPRG**) with the Final Plat Submittal **after** City Plan Commission Approval.
10. Prior to the final plat, submit a tree survey to the Arborist. A release from the arborist is required prior to an early release request or the recordation of the plat, whichever occurs first.
11. The number of lots permitted by this plat is one.

Paving & Drainage Conditions:

12. Submit a full set of Civil Engineering Plans (drainage, paving, street signage/markings/lighting) prepared per City Standards by a licensed (TX) Professional Engineer to Engineering Division in Room 200, Oak Cliff Municipal Center (i.e. 311T/DP). Additions and alterations to the public infrastructure require approval and may require private development contracts with bonds. 51A-8.102 (c); 8.601(b)(4),(5),(6),(7),(8),(9)
13. Detention may be required if the capacity of available outfall is not adequate to carry the developed runoff. Section 51A-8.611(c).
14. "Lot-to-Lot drainage will not be allowed without proper City of Dallas Engineering Division approval" (Note must be on the Plat). 51A 8.611(e)
15. Submit drainage, paving, etc. plans prepared by a licensed (TX) Professional Engineer to Permit Center, Oak Cliff Municipal Center (i.e., non-311T/DP). 51A-8.102 (c); 8.601(b)(4), (5), (6),(7),(8),(9)

Right-of way Requirements Conditions:

16. On the final plat, dedicate 28 feet of right-of-way (via fee simple or street easement) from the established centerline of Furlong Drive. *Sections 51A-8.602(c), 51A-8.604(c) and 51A-8.611(c).*
17. Plans must comply with sidewalk design standards: sidewalks must comply with a minimum five-foot width plus five-foot buffer
18. Plans must comply with City's street lighting standards. See illumination standards in Street Design Manual.

Survey (SPRG) Conditions:

19. Prior to final plat, submit a completed final plat checklist and all supporting documents.

20. On the final plat, label approximate location of abstract line

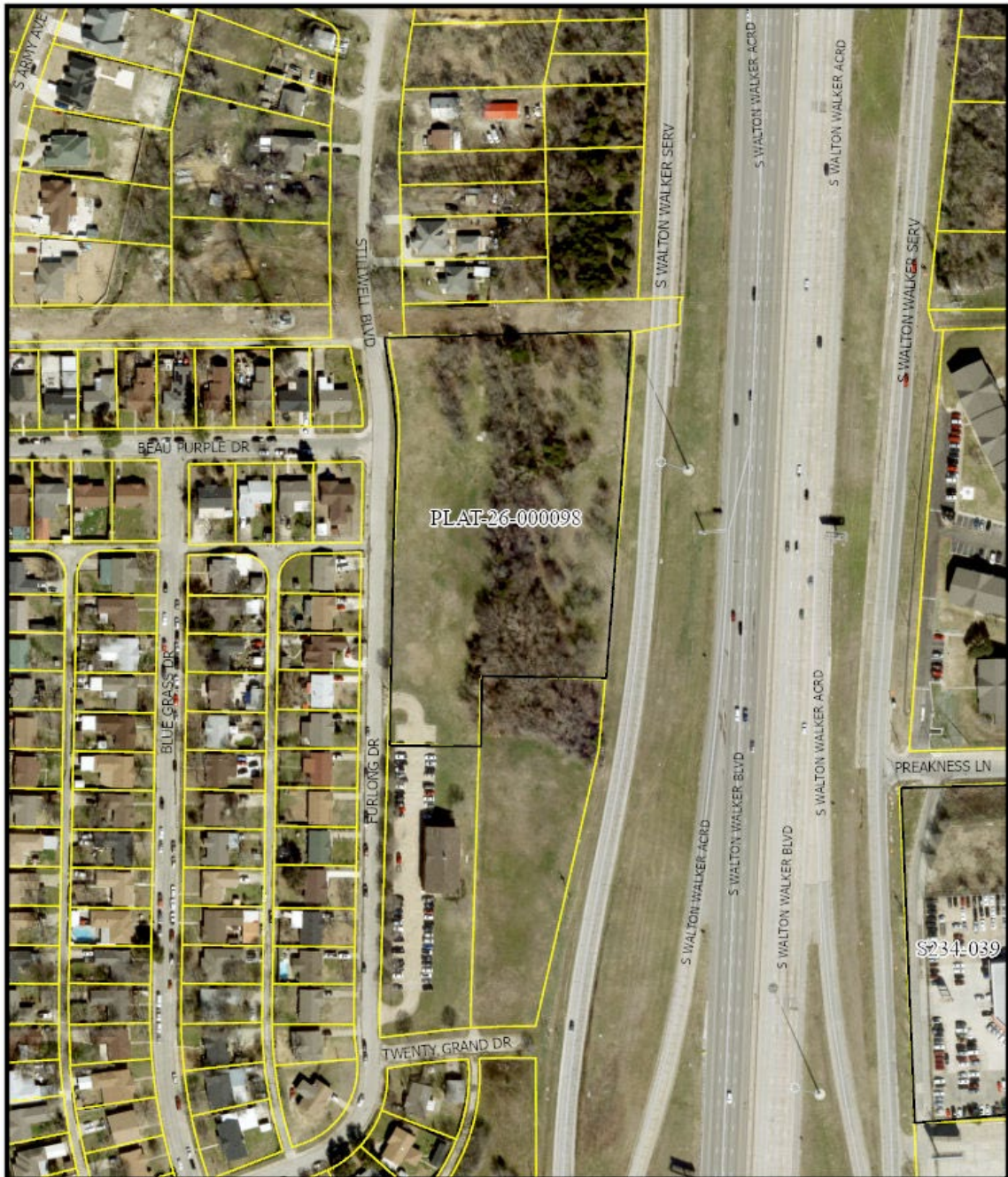
Dallas Water Utilities Conditions:

21. Additional design information is required for assessment. Site plan must be submitted showing proposed development, building finished floor elevation, development, existing mains – including downstream manhole, and proposed water and wastewater service locations. Submit water/wastewater engineering plans to 320 E. Jefferson Blvd., Room 200, Attention: Water and Wastewater Engineering.
22. Wastewater main improvements is required by Private Development Contract. Submit water/wastewater engineering plans to 320 E. Jefferson Blvd., Room 200, Attention: Water and Wastewater Engineering.
23. Existing and any proposed Water and Wastewater Easements must be shown and/or increased to conform to current design standards. **Notice:** Minimum DWU easement size 20' for one utility and 25' for both water and sewer. Larger diameter or deeper mains may require additional width.

Street Name/ GIS, Lot & Block Conditions:

24. On the final plat change "Walton Walker Boulevard" to "Walton Walker Boulevard/State Highway Loop No. 12". Section 51A-8.403(a)(1)(A)(xii).
25. On the final plat, change "Stillwell Boulevard FKA Ledbetter" to "Stillwell Boulevard (FKA Ledbetter Drive)"
26. On the final plat, identify the property as Lot 1 in City Block E/7665.





 1:2,400	<h2 style="text-align: center;">AERIAL MAP</h2> <p style="text-align: center;"> <input type="checkbox"/> Area Of Request <input type="checkbox"/> Recent History </p>	Case no: PLAT-26-000098 Date: 04/03/2026
--	--	---

