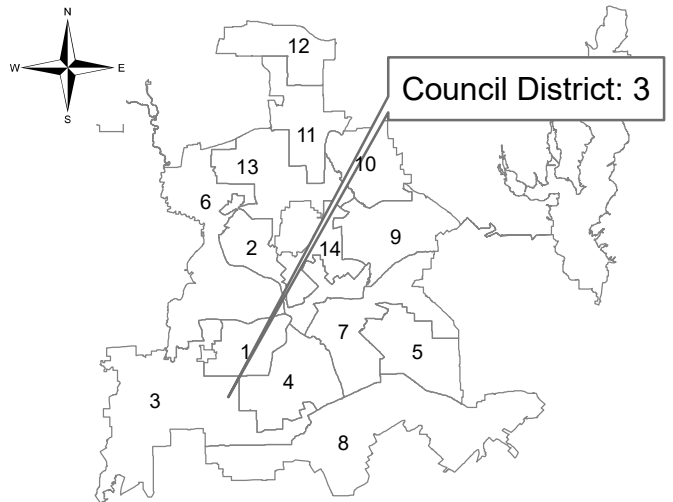


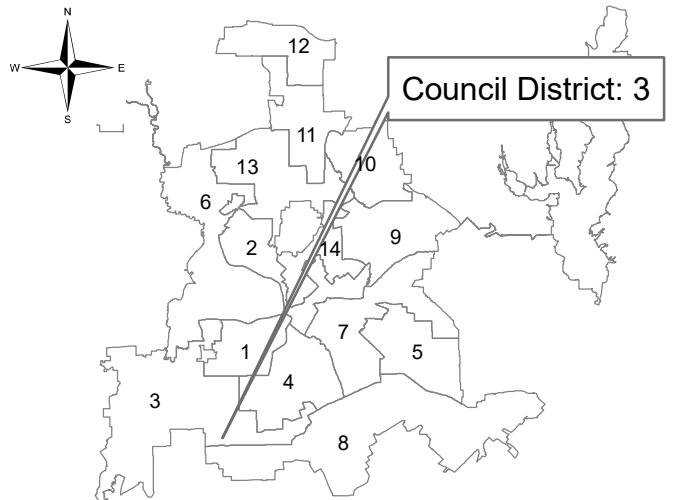
Cedarhurst Drive  
from south of Bonnywood Lane north



**Dallas Water Utilities**  
**Contract No. 22-499/500**  
**Water and Wastewater Main Improvements and**  
**Extensions to Unserved Areas at 21 locations**



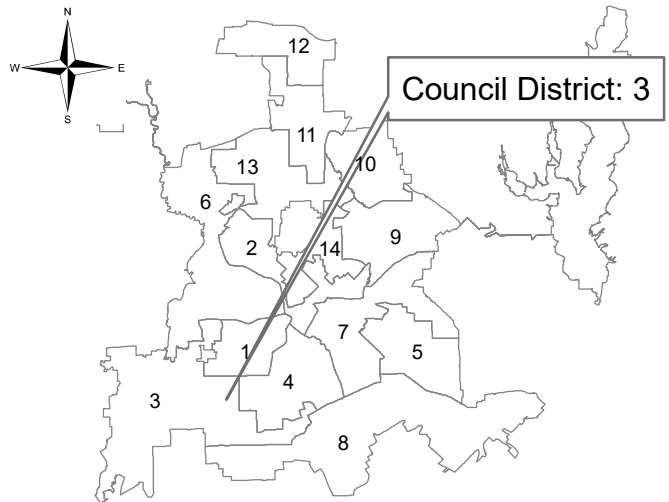
Pastor Bailey Drive  
 from Five Mile Creek to south of Calhoun Avenue



**Dallas Water Utilities**  
**Contract No. 22-499/500**  
**Water and Wastewater Main Improvements and**  
**Extensions to Unserved Areas at 21 locations**



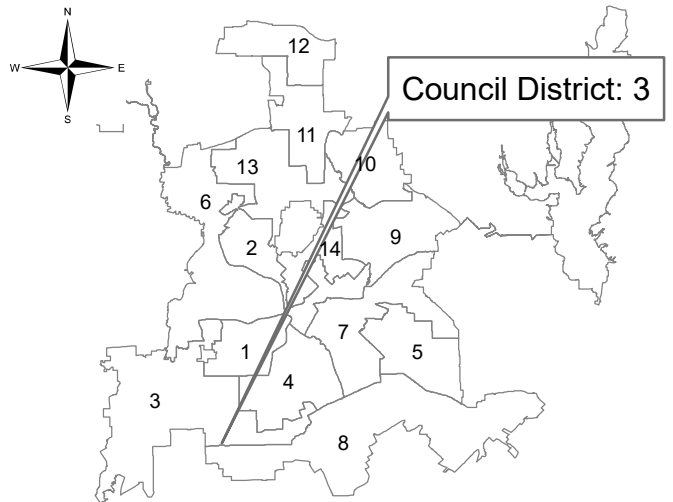
Ravinia Drive  
from Southwood Drive to Alley south  
of Woodmere Drive



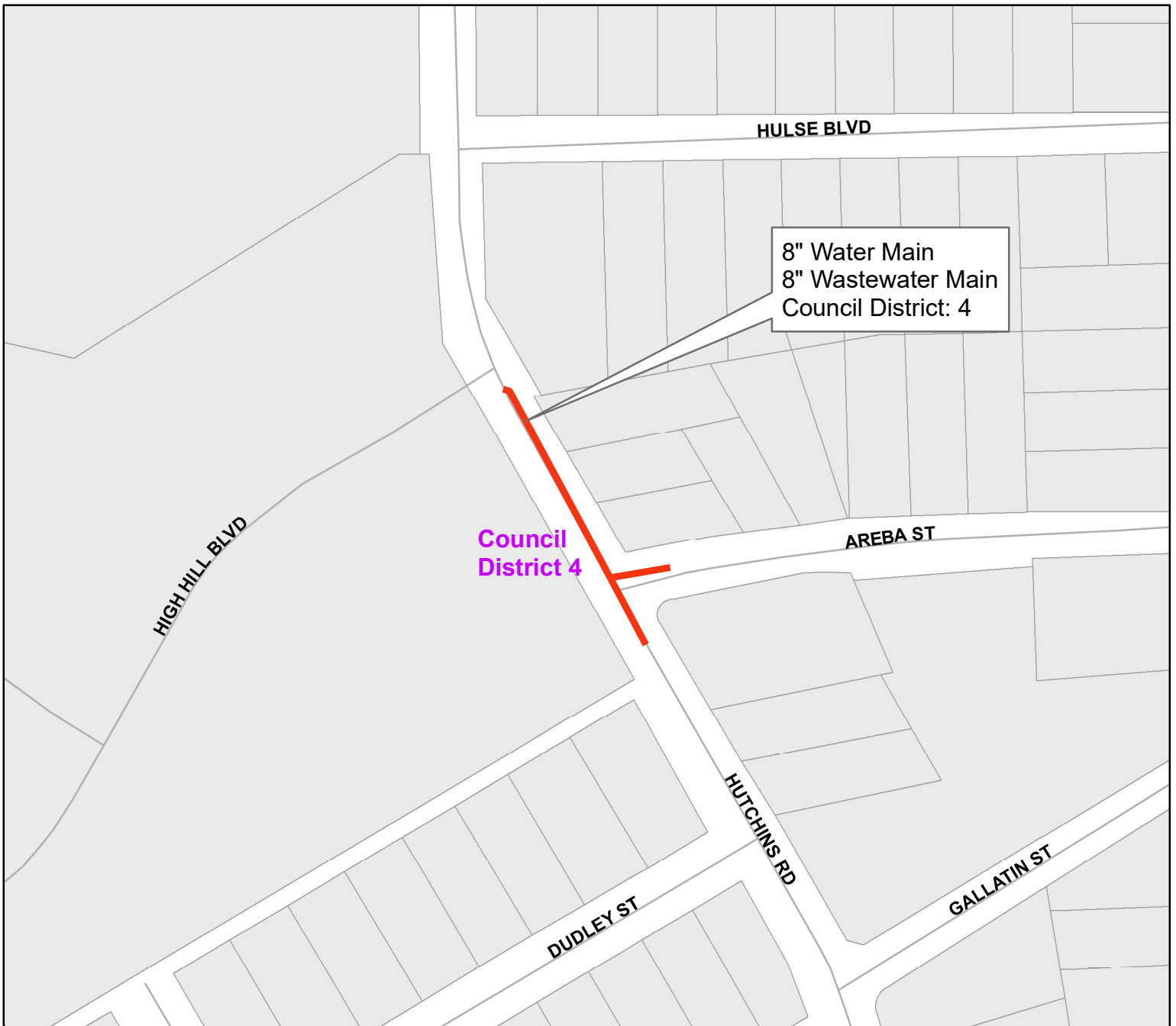
**Dallas Water Utilities**  
**Contract No. 22-499/500**  
**Water and Wastewater Main Improvements and**  
**Extensions to Unserved Areas at 21 locations**



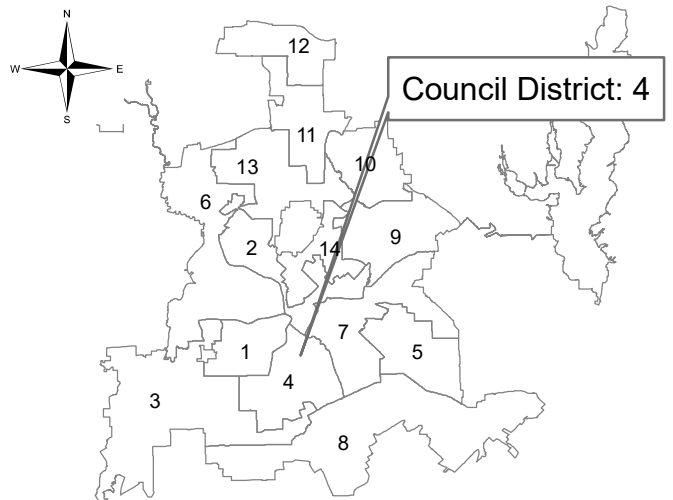
Scout Avenue  
from Pastor Bailey Drive west



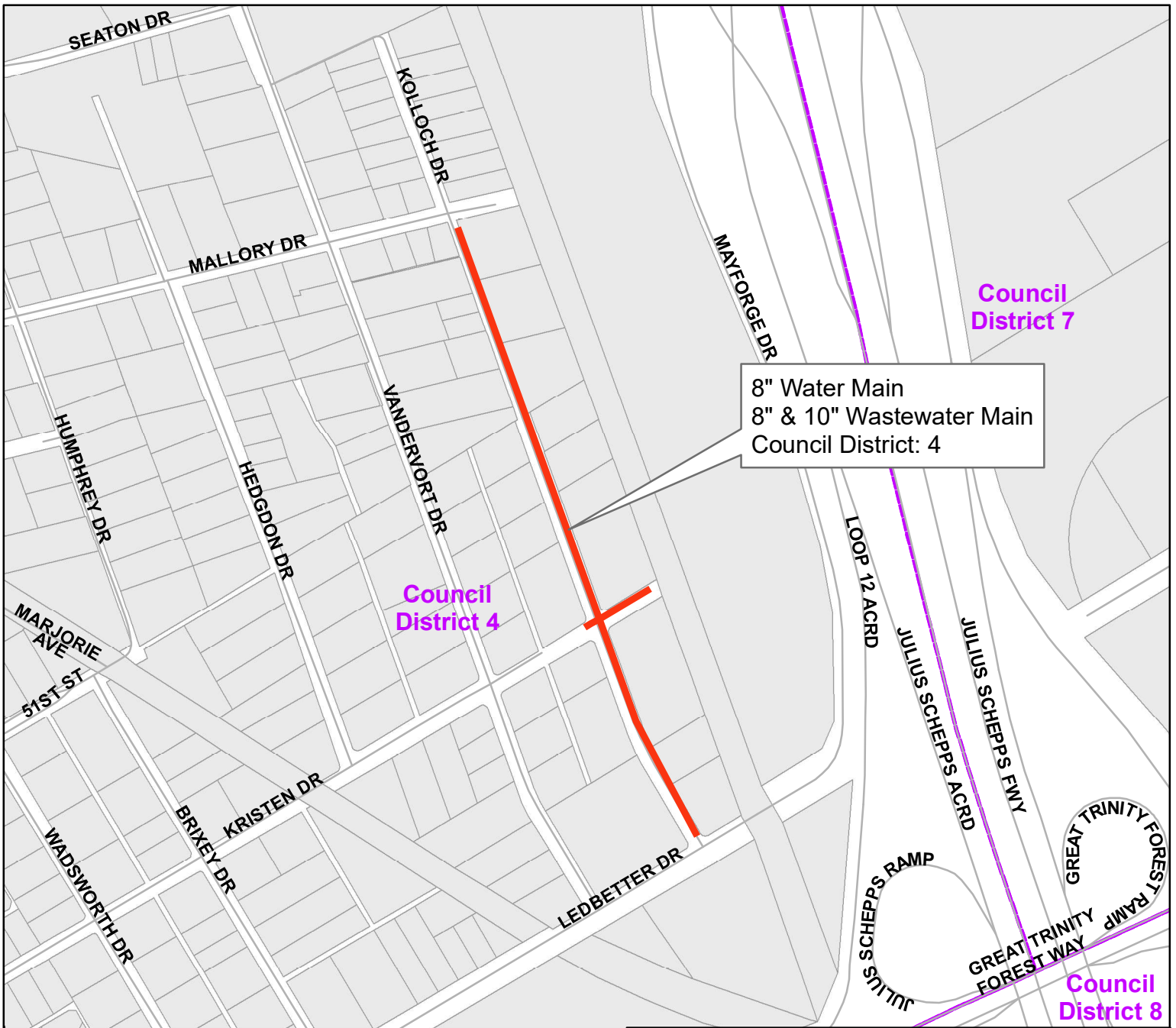
**Dallas Water Utilities**  
**Contract No. 22-499/500**  
**Water and Wastewater Main Improvements and**  
**Extensions to Unserved Areas at 21 locations**



Hutchins Road  
from south of Areba Street northwest



**Dallas Water Utilities**  
**Contract No. 22-499/500**  
**Water and Wastewater Main Improvements and**  
**Extensions to Unserved Areas at 21 locations**



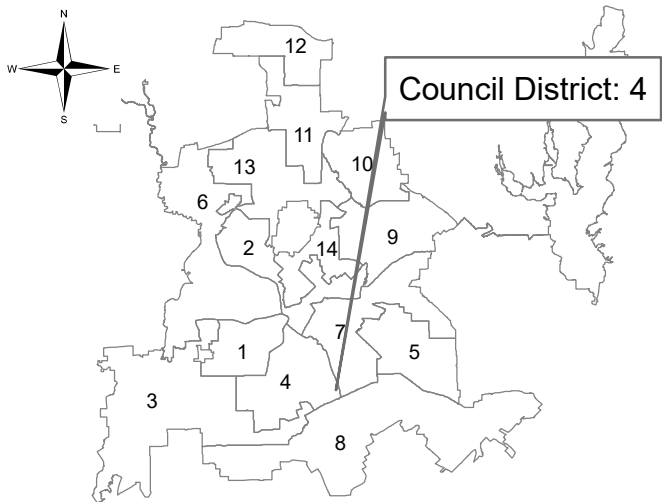
8" Water Main  
 8" & 10" Wastewater Main  
 Council District: 4

Council District 4

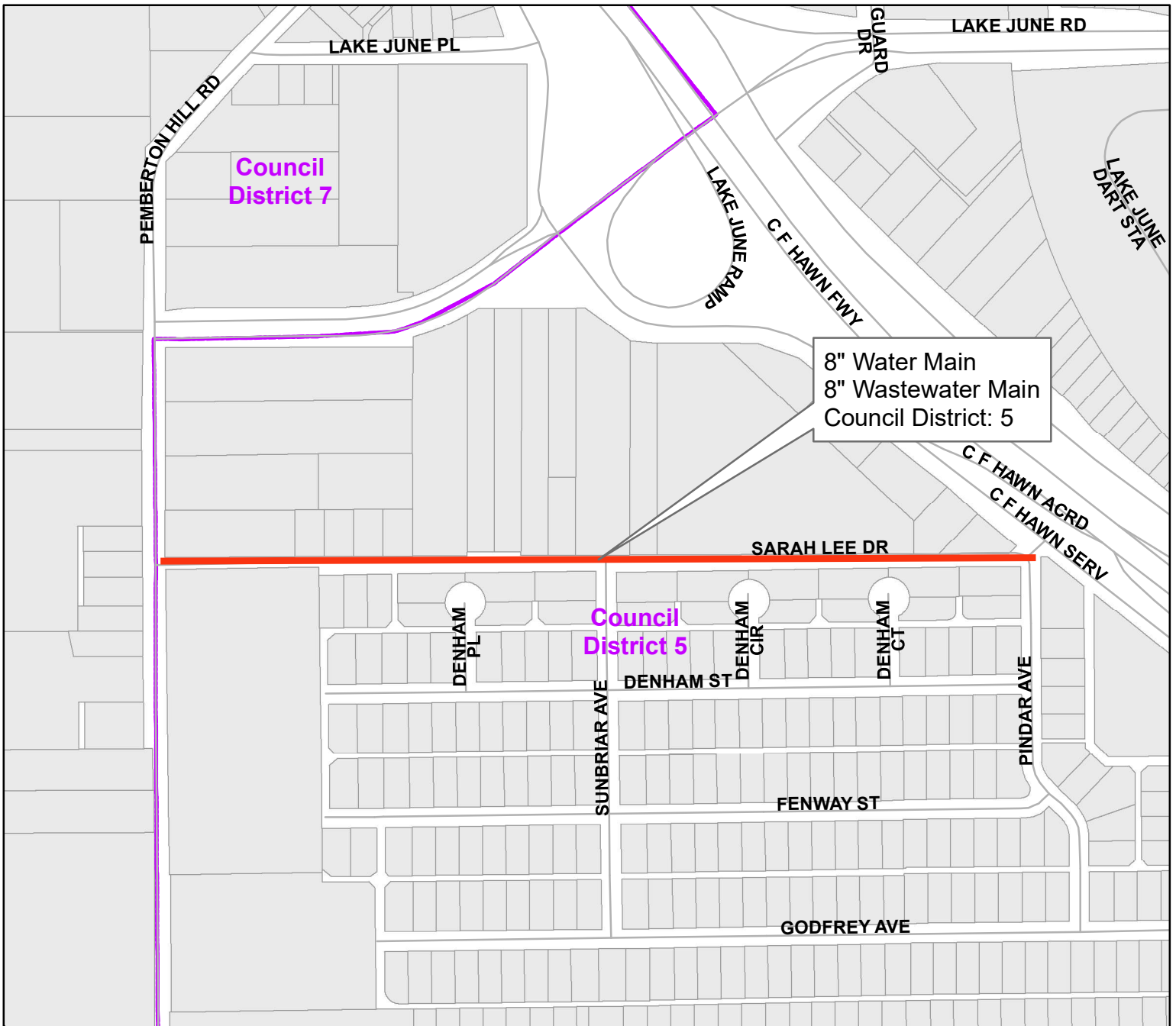
Council District 7

Council District 8

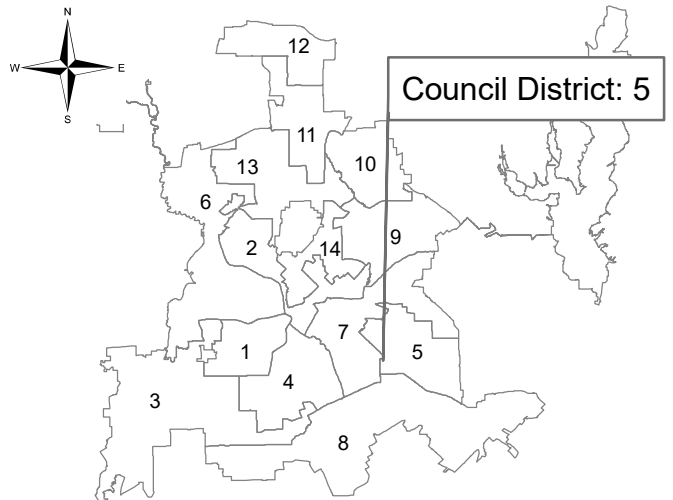
Kolloch Drive/Kristen Drive  
 from Ledbetter Drive to Mallery Drive/from  
 Kolloch Drive northeast



**Dallas Water Utilities**  
**Contract No. 22-499/500**  
**Water and Wastewater Main Improvements and**  
**Extensions to Unserved Areas at 21 locations**

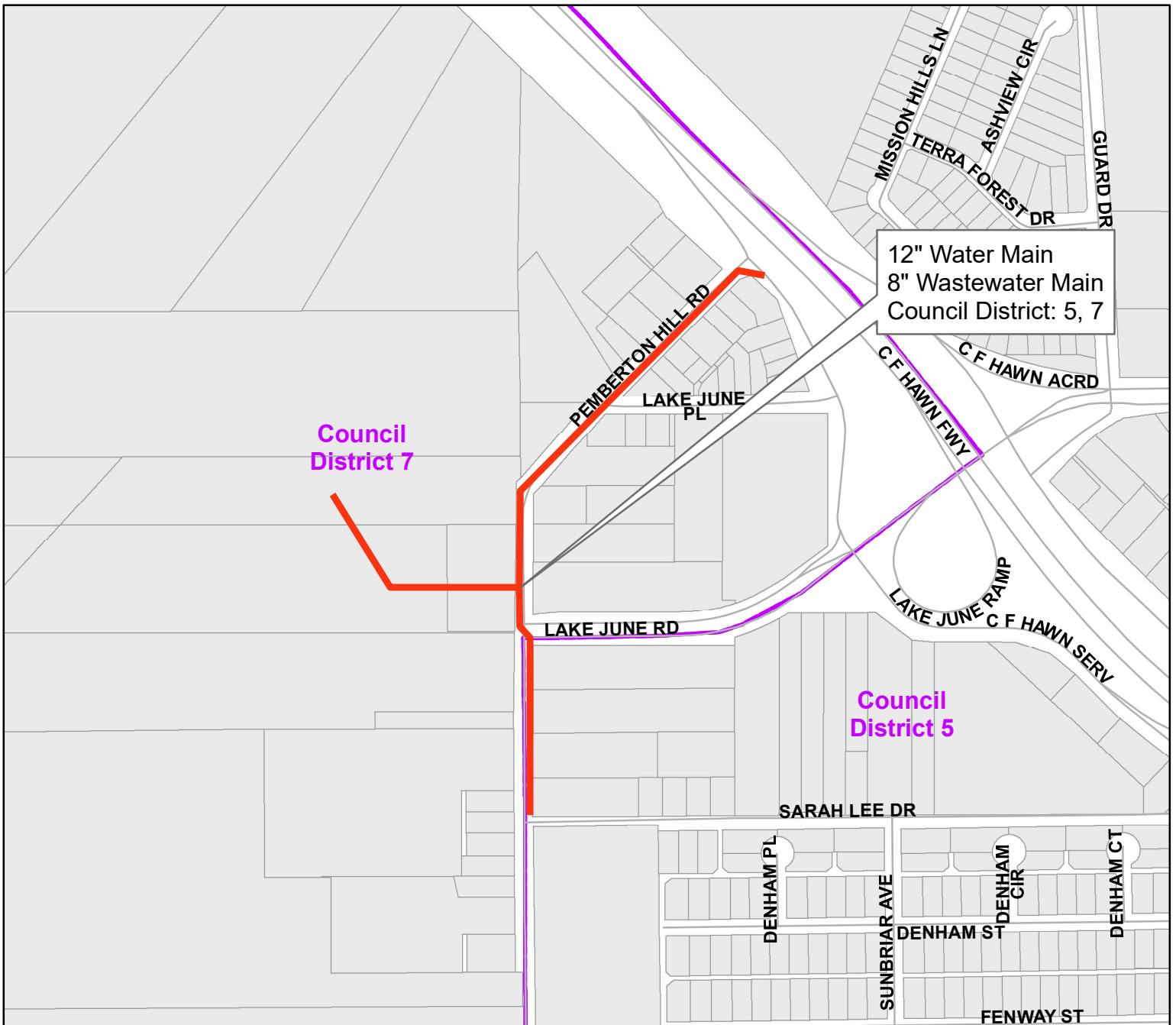


Sarah Lee Drive  
from Pemberton Hill Road to Pindar Avenue

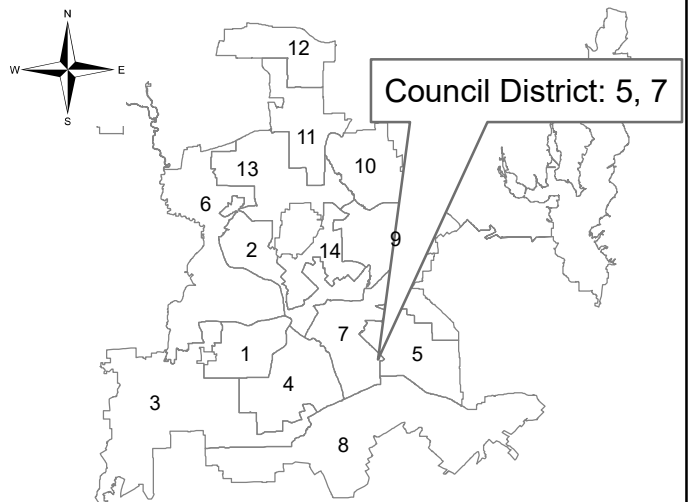


**Dallas Water Utilities**  
**Contract No. 22-499/500**  
**Water and Wastewater Main Improvements and**  
**Extensions to Unserved Areas at 21 locations**



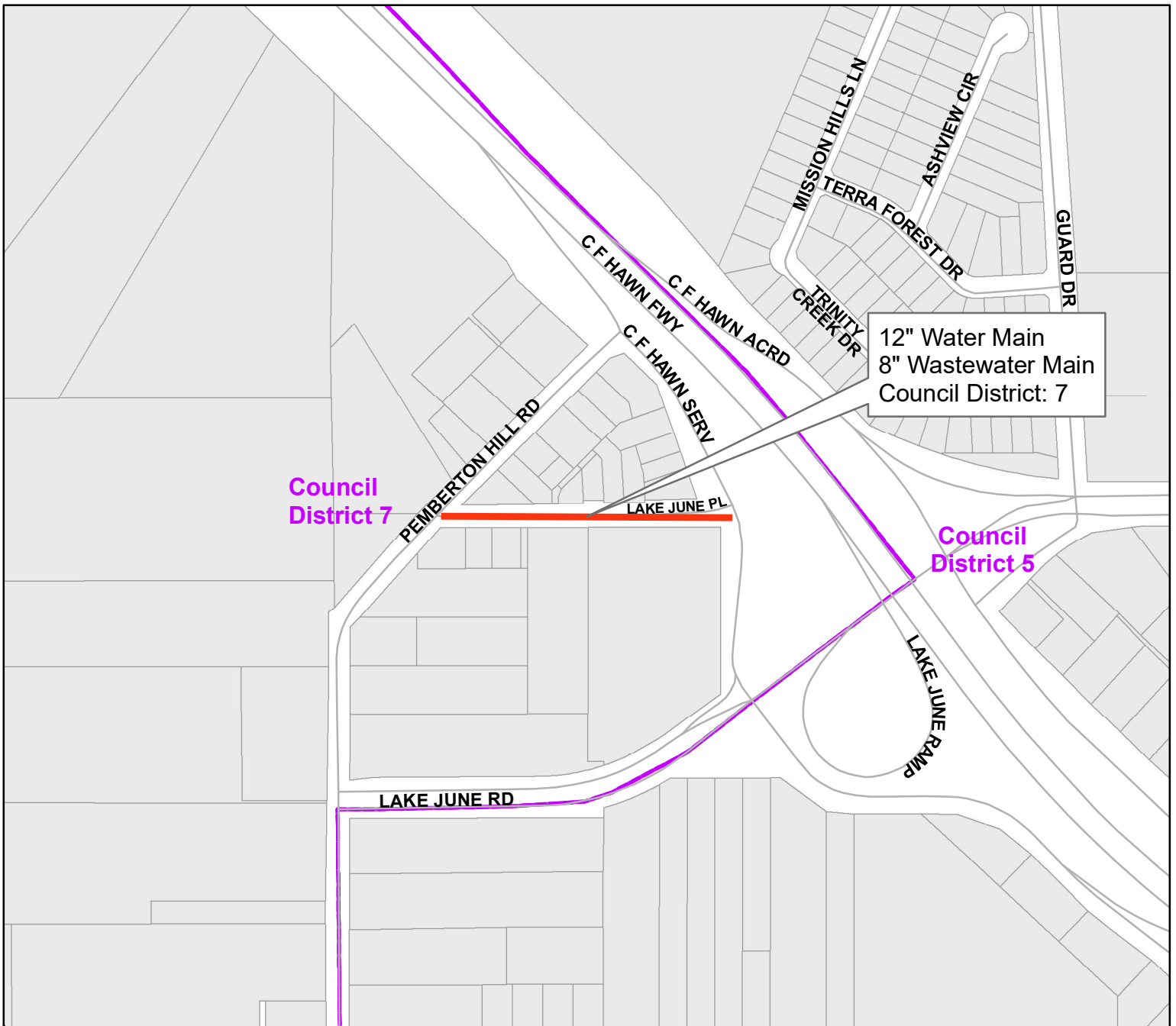


Easement west of Pemberton Hill Road/  
 Pemberton Hill Road  
 from Pemberton Hill Road west/  
 from C F Hawn Freeway (U. S. Highway 175)  
 SERV to Sarah Lee Drive

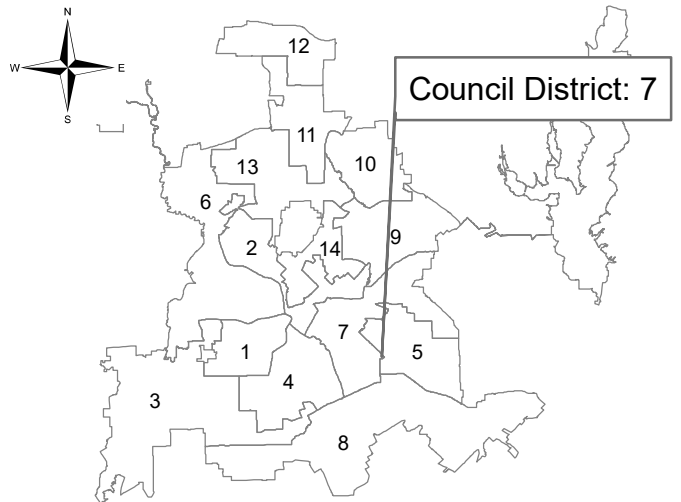


**Dallas Water Utilities**  
**Contract No. 22-499/500**  
**Water and Wastewater Main Improvements and**  
**Extensions to Unserved Areas at 21 locations**

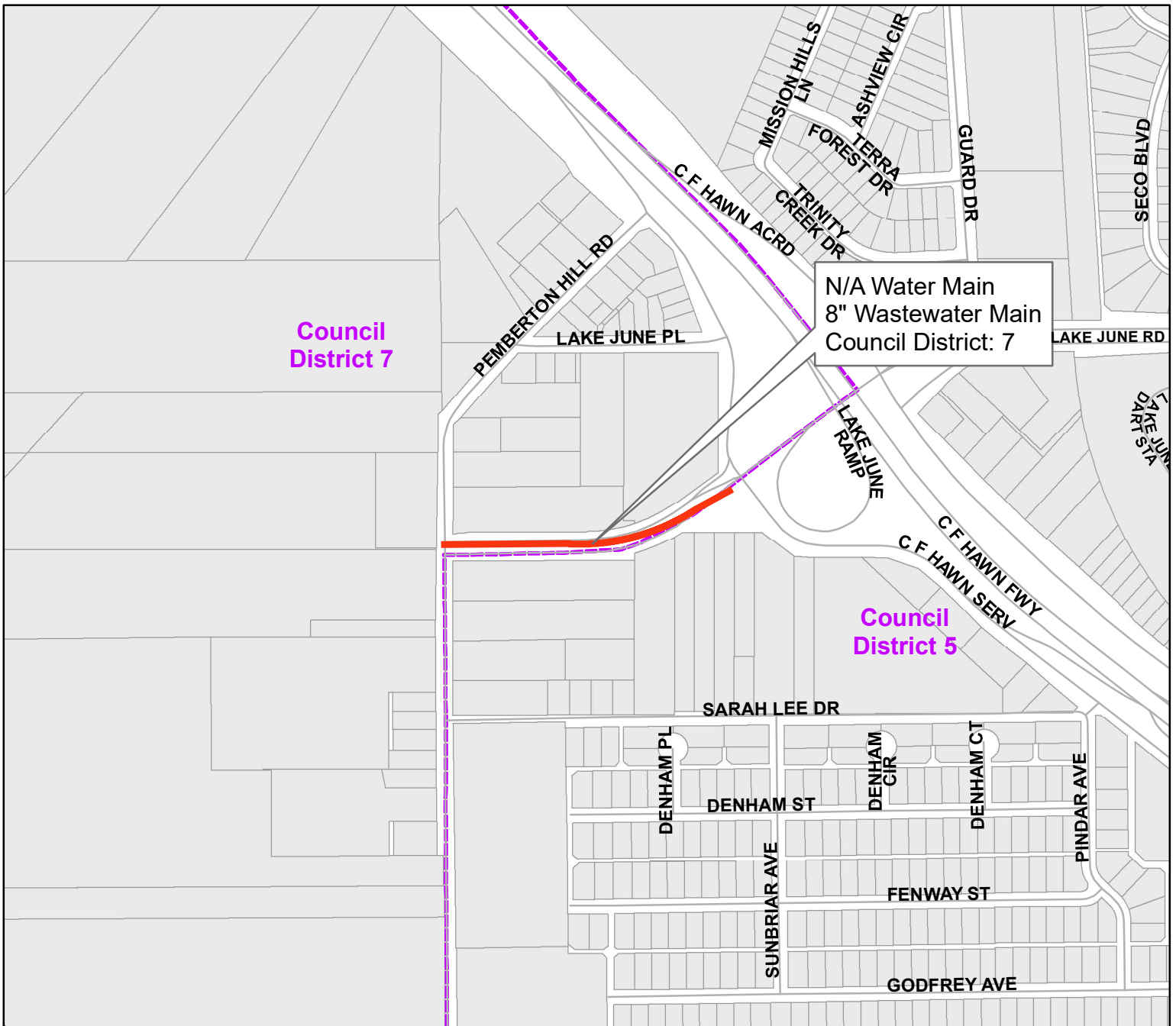




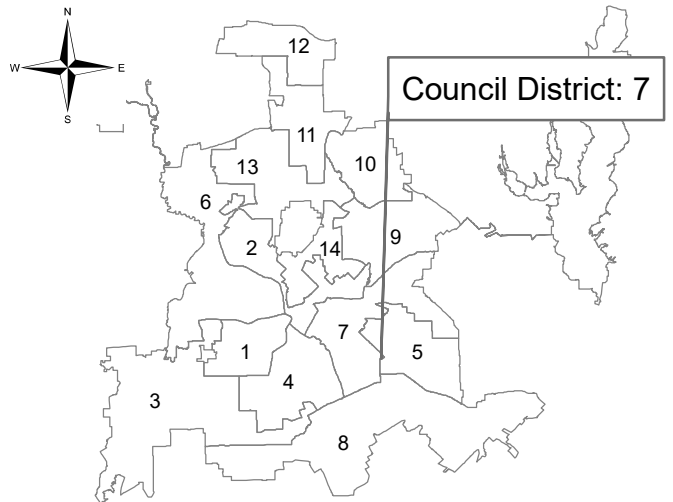
Lake June Place  
 from C F Hawn Freeway (U. S. Highway 175) SERV  
 to Pemberton Hill Road



**Dallas Water Utilities**  
**Contract No. 22-499/500**  
**Water and Wastewater Main Improvements and**  
**Extensions to Unserved Areas at 21 locations**



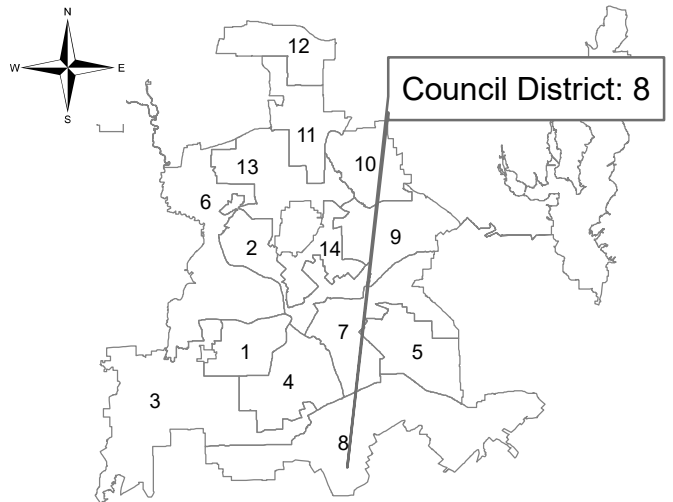
Lake June Road  
 from C F Hawn Freeway (U. S. Highway  
 175) SERV to Pemberton Hill Road



**Dallas Water Utilities**  
**Contract No. 22-499/500**  
**Water and Wastewater Main Improvements and**  
**Extensions to Unserved Areas at 21 locations**



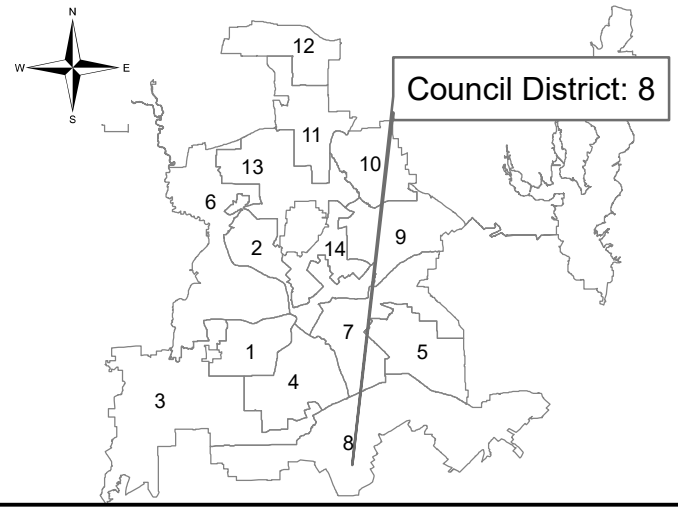
Bonnie View Road  
from north of Cleveland Road north



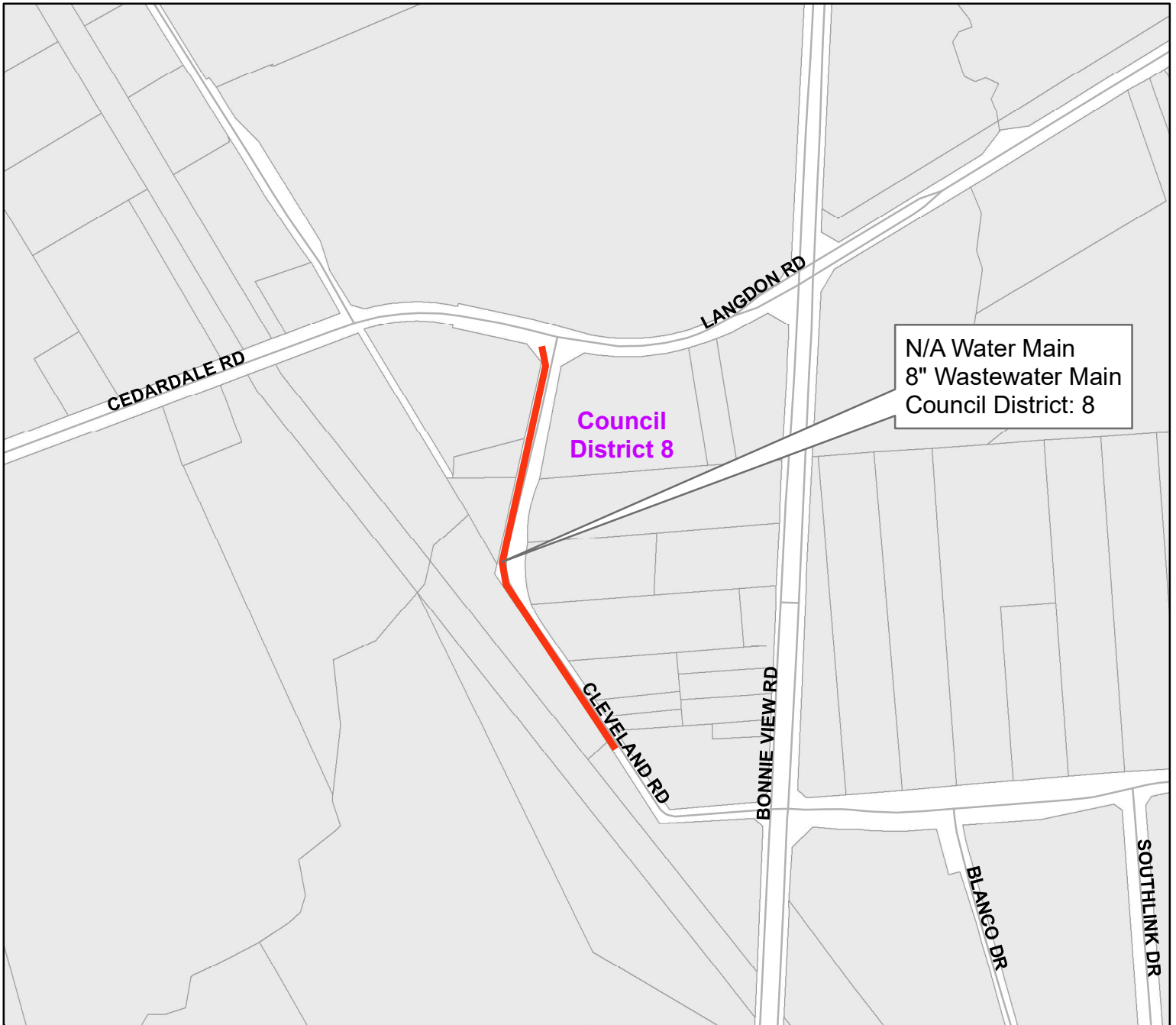
**Dallas Water Utilities**  
**Contract No. 22-499/500**  
**Water and Wastewater Main Improvements and**  
**Extensions to Unserved Areas at 21 locations**



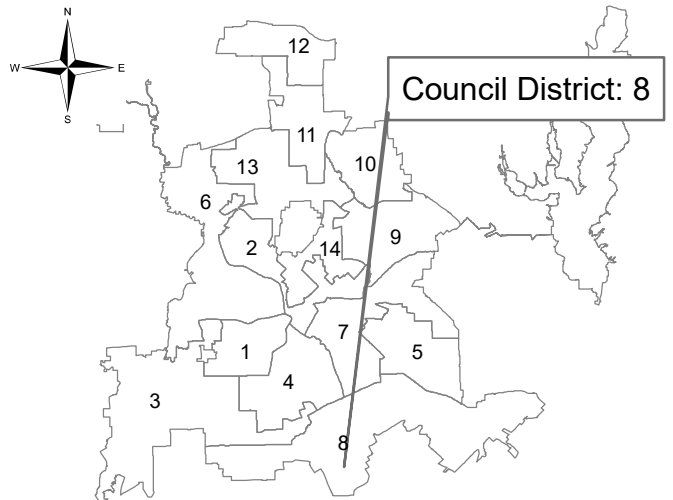
Bonnie View Road  
from south of Langdon Road south



**Dallas Water Utilities**  
**Contract No. 22-499/500**  
**Water and Wastewater Main Improvements and**  
**Extensions to Unserved Areas at 21 locations**



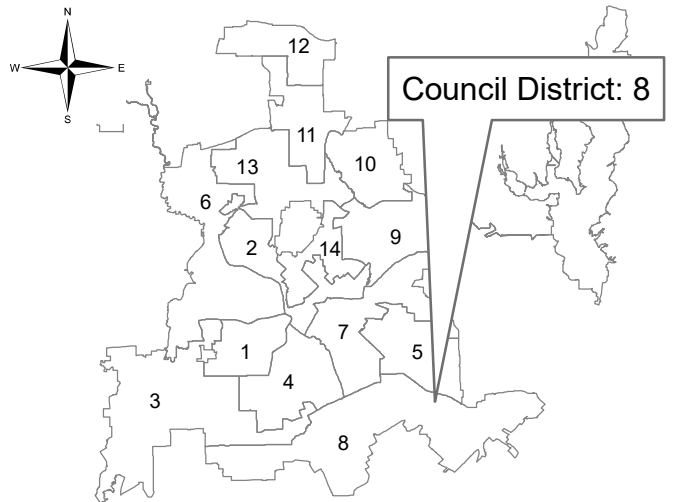
Cleveland Road  
from Langdon Road southeast



**Dallas Water Utilities**  
**Contract No. 22-499/500**  
**Water and Wastewater Main Improvements and**  
**Extensions to Unserved Areas at 21 locations**



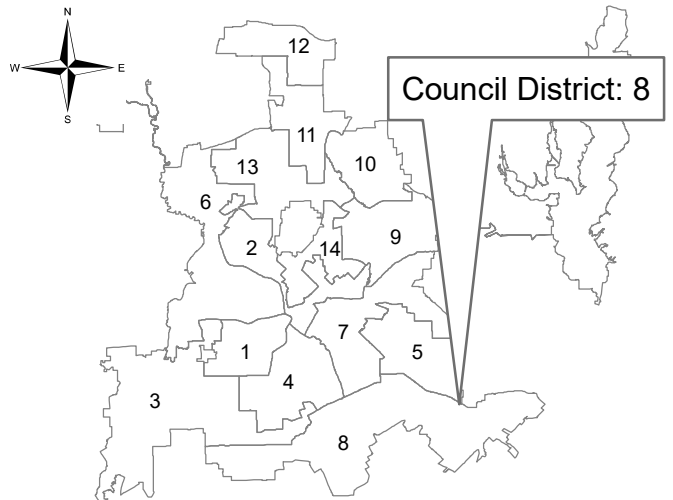
Cold Springs Avenue  
from Portnoma Lane to Clearfield Road



**Dallas Water Utilities**  
**Contract No. 22-499/500**  
**Water and Wastewater Main Improvements and**  
**Extensions to Unserved Areas at 21 locations**



Ellenwood Drive  
 from C F Hawn Freeway (U. S. Highway 175) SERV  
 to Tumbleweed Drive

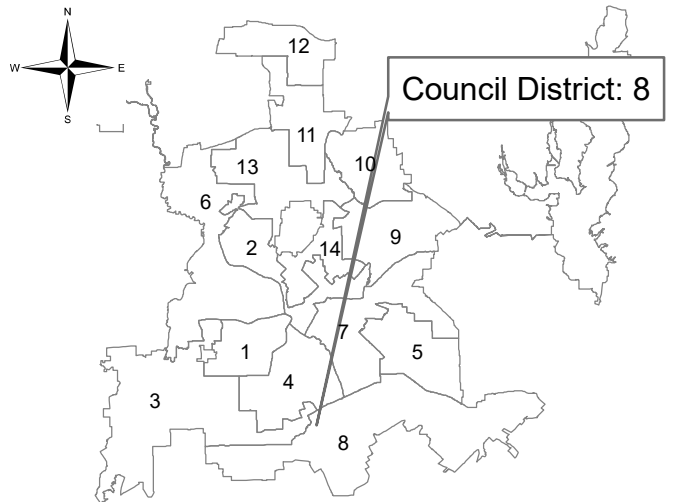


**Dallas Water Utilities**  
**Contract No. 22-499/500**  
**Water and Wastewater Main Improvements and**  
**Extensions to Unserved Areas at 21 locations**





Givendale Road  
from Tracy Road southwest

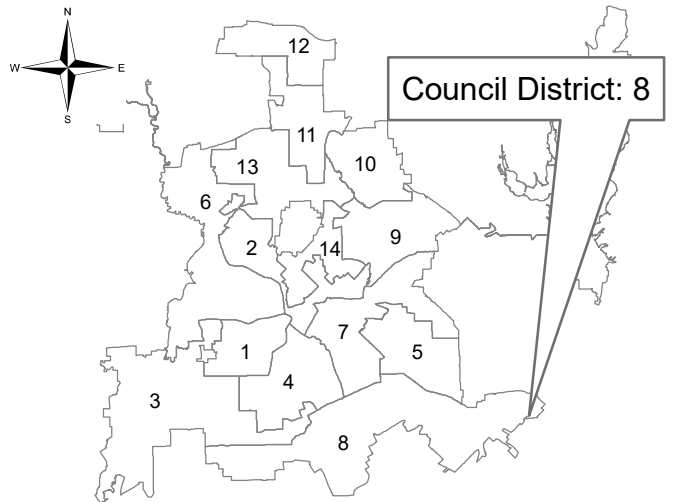


**Dallas Water Utilities**  
**Contract No. 22-499/500**  
**Water and Wastewater Main Improvements and**  
**Extensions to Unserved Areas at 21 locations**



N/A Water Main  
 8" Wastewater Main  
 Council District: 8

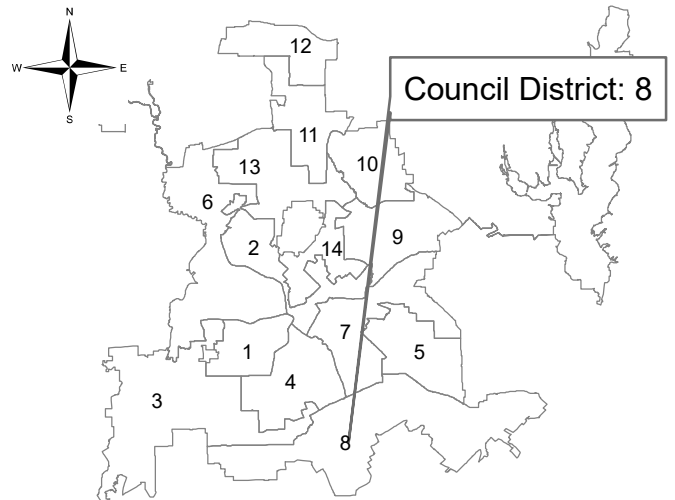
Jacobson Drive  
 from La Palma Drive northeast



**Dallas Water Utilities**  
**Contract No. 22-499/500**  
**Water and Wastewater Main Improvements and**  
**Extensions to Unserved Areas at 21 locations**



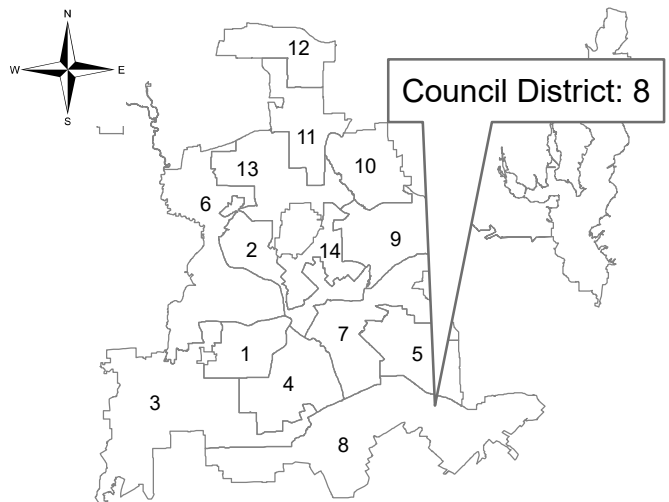
Memory Lane Boulevard  
from Bonnie View Road northeast



**Dallas Water Utilities**  
**Contract No. 22-499/500**  
**Water and Wastewater Main Improvements and**  
**Extensions to Unserved Areas at 21 locations**



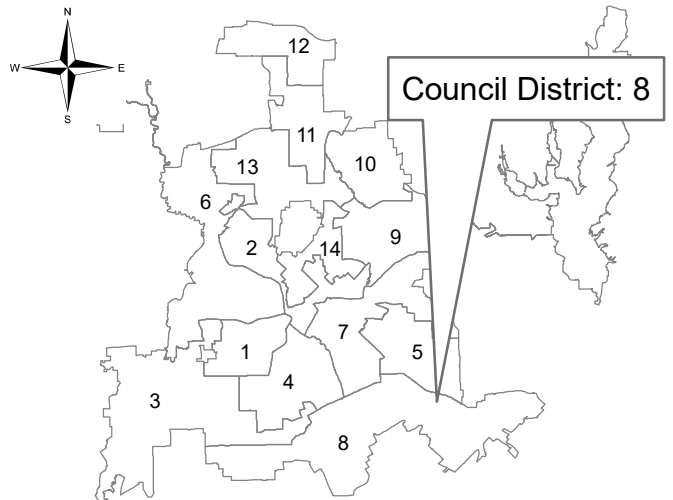
Mountain Cabin Drive  
 from Clearfield Road to Portnoma Lane



**Dallas Water Utilities**  
**Contract No. 22-499/500**  
**Water and Wastewater Main Improvements and**  
**Extensions to Unserved Areas at 21 locations**

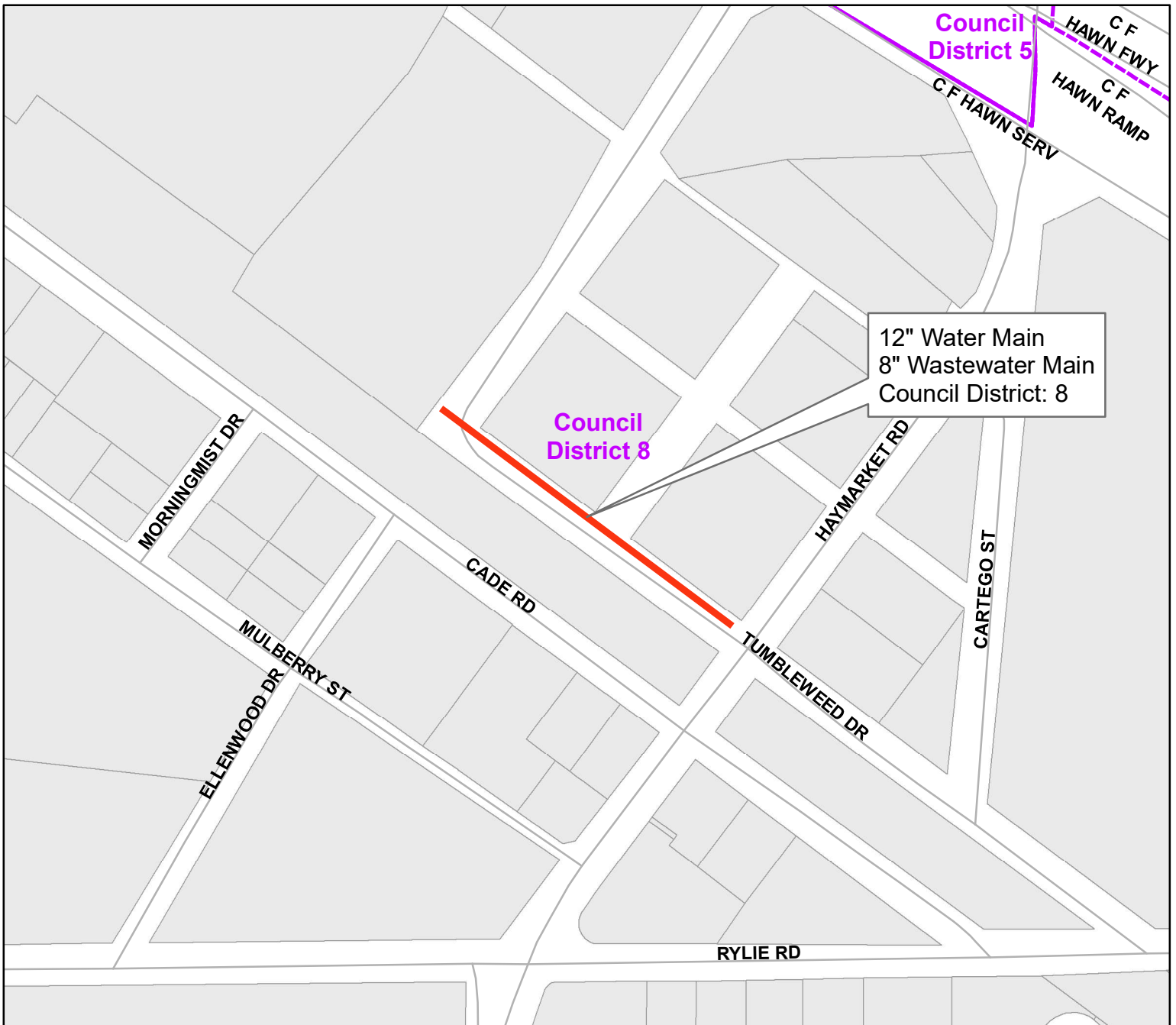


Portnoma Lane  
 from Fireside Drive to Mountain Cabin Drive

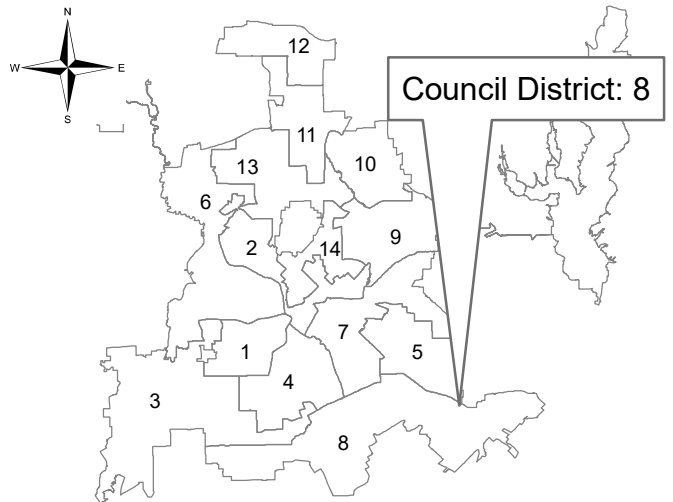


**Dallas Water Utilities**  
**Contract No. 22-499/500**  
**Water and Wastewater Main Improvements and**  
**Extensions to Unserved Areas at 21 locations**





Tumbleweed Drive  
from Ellenwood Drive to Haymarket Road



**Dallas Water Utilities**  
**Contract No. 22-499/500**  
**Water and Wastewater Main Improvements and**  
**Extensions to Unserved Areas at 21 locations**