

THE CONTRACTOR IS SPECIFICALLY CAUTIONED THAT THE LOCATION AND/OR ELEVATION OF EXISTING UTILITIES AS SHOWN ON THESE PLANS ARE BASED ON RECORDS OF THE VARIOUS UTILITY COMPANIES AND, WHERE POSSIBLE, MEASUREMENTS TAKEN IN THE FIELD. THE INFORMATION IS NOT TO BE RELIED ON AS BEING EXACT OR COMPLETE. THE CONTRACTOR MUST CALL THE APPROPRIATE UTILITY COMPANY AT LEAST 7 DAYS BEFORE ANY EXCAVATION TO REQUEST EXACT FIELD LOCATION OF UTILITIES. IT SHALL BE THE RESPONSIBILITY OF THE CONTRACTOR TO RELOCATE ALL EXISTING UTILITIES HORIZONTALLY AND VERTICALLY WHICH CONFLICT WITH THE PROPOSED IMPROVEMENTS SHOWN ON THE PLANS.

X CUT IN CONCRETE AT THE INTERSECTION OF BISSONET AVE & ELAM RD.
N=6,959,482.46 E=2,521,506.11
ELEVATION: 443.20'

X CUT IN CONCRETE AT THE INTERSECTION OF ELAM RD & PLEASANT DR
N=6,949,555.91 E=2,528,339.32
ELEVATION: 460.55'

ACCORDING TO THE F.I.R.M. NO. 48113C0510K, THE SUBJECT PROPERTY LIES IN ZONE X
PER MAP REVISION DATED 2014.

EXISTING

NXX°XX'XX"W XXX.XX'
(NXX°XX'XX"W XXX.XX' APB)

	MEASURED BEARING & DISTANCE	ACTUAL PLAT BEARING & DISTANCE
1-2	S 89° 0' E 167.00'	S 89° 0' E 167.00'
2-3	N 89° 0' W 167.00'	N 89° 0' W 167.00'
3-4	S 89° 0' E 167.00'	S 89° 0' E 167.00'
4-5	N 89° 0' W 167.00'	N 89° 0' W 167.00'
5-6	S 89° 0' E 167.00'	S 89° 0' E 167.00'
6-7	N 89° 0' W 167.00'	N 89° 0' W 167.00'
7-8	S 89° 0' E 167.00'	S 89° 0' E 167.00'
8-9	N 89° 0' W 167.00'	N 89° 0' W 167.00'
9-10	S 89° 0' E 167.00'	S 89° 0' E 167.00'
10-11	N 89° 0' W 167.00'	N 89° 0' W 167.00'
11-12	S 89° 0' E 167.00'	S 89° 0' E 167.00'
12-13	N 89° 0' W 167.00'	N 89° 0' W 167.00'
13-14	S 89° 0' E 167.00'	S 89° 0' E 167.00'
14-15	N 89° 0' W 167.00'	N 89° 0' W 167.00'
15-16	S 89° 0' E 167.00'	S 89° 0' E 167.00'
16-17	N 89° 0' W 167.00'	N 89° 0' W 167.00'
17-18	S 89° 0' E 167.00'	S 89° 0' E 167.00'
18-19	N 89° 0' W 167.00'	N 89° 0' W 167.00'
19-20	S 89° 0' E 167.00'	S 89° 0' E 167.00'
20-21	N 89° 0' W 167.00'	N 89° 0' W 167.00'
21-22	S 89° 0' E 167.00'	S 89° 0' E 167.00'
22-23	N 89° 0' W 167.00'	N 89° 0' W 167.00'
23-24	S 89° 0' E 167.00'	S 89° 0' E 167.00'
24-25	N 89° 0' W 167.00'	N 89° 0' W 167.00'
25-26	S 89° 0' E 167.00'	S 89° 0' E 167.00'
26-27	N 89° 0' W 167.00'	N 89° 0' W 167.00'
27-28	S 89° 0' E 167.00'	S 89° 0' E 167.00'
28-29	N 89° 0' W 167.00'	N 89° 0' W 167.00'
29-30	S 89° 0' E 167.00'	S 89° 0' E 167.00'
30-31	N 89° 0' W 167.00'	N 89° 0' W 167.00'
31-32	S 89° 0' E 167.00'	S 89° 0' E 167.00'
32-33	N 89° 0' W 167.00'	N 89° 0' W 167.00'
33-34	S 89° 0' E 167.00'	S 89° 0' E 167.00'
34-35	N 89° 0' W 167.00'	N 89° 0' W 167.00'
35-36	S 89° 0' E 167.00'	S 89° 0' E 167.00'
36-37	N 89° 0' W 167.00'	N 89° 0' W 167.00'
37-38	S 89° 0' E 167.00'	S 89° 0' E 167.00'
38-39	N 89° 0' W 167.00'	N 89° 0' W 167.00'
39-40	S 89° 0' E 167.00'	S 89° 0' E 167.00'
40-41	N 89° 0' W 167.00'	N 89° 0' W 167.00'
41-42	S 89° 0' E 167.00'	S 89° 0' E 167.00'
42-43	N 89° 0' W 167.00'	N 89° 0' W 167.00'
43-44	S 89° 0' E 167.00'	S 89° 0' E 167.00'
44-45	N 89° 0' W 167.00'	N 89° 0' W 167.00'
45-46	S 89° 0' E 167.00'	S 89° 0' E 167.00'
46-47	N 89° 0' W 167.00'	N 89° 0' W 167.00'
47-48	S 89° 0' E 167.00'	S 89° 0' E 167.00'
48-49	N 89° 0' W 167.00'	N 89° 0' W 167.00'
49-50	S 89° 0' E 167.00'	S 89° 0' E 167.00'
50-51	N 89° 0' W 167.00'	N 89° 0' W 167.00'
51-52	S 89° 0' E 167.00'	S 89° 0' E 167.00'
52-53	N 89° 0' W 167.00'	N 89° 0' W 167.00'
53-54	S 89° 0' E 167.00'	S 89° 0' E 167.00'
54-55	N 89° 0' W 167.00'	N 89° 0' W 167.00'
55-56	S 89° 0' E 167.00'	S 89° 0' E 167.00'
56-57	N 89° 0' W 167.00'	N 89° 0' W 167.00'
57-58	S 89° 0' E 167.00'	S 89° 0' E 167.00'
58-59	N 89° 0' W 167.00'	N 89° 0' W 167.00'
59-60	S 89° 0' E 167.00'	S 89° 0' E 167.00'
60-61	N 89° 0' W 167.00'	N 89° 0' W 167.00'
61-62	S 89° 0' E 167.00'	S 89° 0' E 167.00'
62-63	N 89° 0' W 167.00'	N 89° 0' W 167.00'
63-64	S 89° 0' E 167.00'	S 89° 0' E 167.00'
64-65	N 89° 0' W 167.00'	N 89° 0' W 167.00'
65-66	S 89° 0' E 167.00'	S 89° 0' E 167.00'
66-67	N 89° 0' W 167.00'	N 89° 0' W 167.00'
67-68	S 89° 0' E 167.00'	S 89° 0' E 167.00'
68-69	N 89° 0' W 167.00'	N 89° 0' W 167.00'
69-70	S 89° 0' E 167.00'	S 89° 0' E 167.00'
70-71	N 89° 0' W 167.00'	N 89° 0' W 167.00'
71-72	S 89° 0' E 167.00'	S 89° 0' E 167.00'
72-73	N 89° 0' W 167.00'	N 89° 0' W 167.00'
73-74	S 89° 0' E	

O.P.R.J.W.C.T.
R.O.W.
MF
XCUT
IRF
CIRF
TNFH

OFFICIAL PUBLIC RECORDS JIM WELLS COUNTY TEXAS	
RIGHT OF WAY	
MONUMENT FOUND	
"X" CUT IN CONCRETE	
IRON ROD FOUND	
CAPPED IRON ROD FOUND	
TOP NUT OF FIRE HYDRANT	

SIGN

 LIGHT

POWER POLE

 STORM CULVERT

STORM SEWER MANHOLE

 FOUND MONUMENT

SANITARY SEWER MANHOLE

WATER STRUCTURE

 FIRE HYDRANT

- X WATER VALVE

PROPERTY LINE
EASEMENT LINE

— — — — — EASEMENT LINE
————— MAJOR CONTOUR

MAJOR CONTOUR
MINOR CONTOUR

MINOR CONTOUR CURB LINE

WATER LINE

SANITARY SEWER LINE

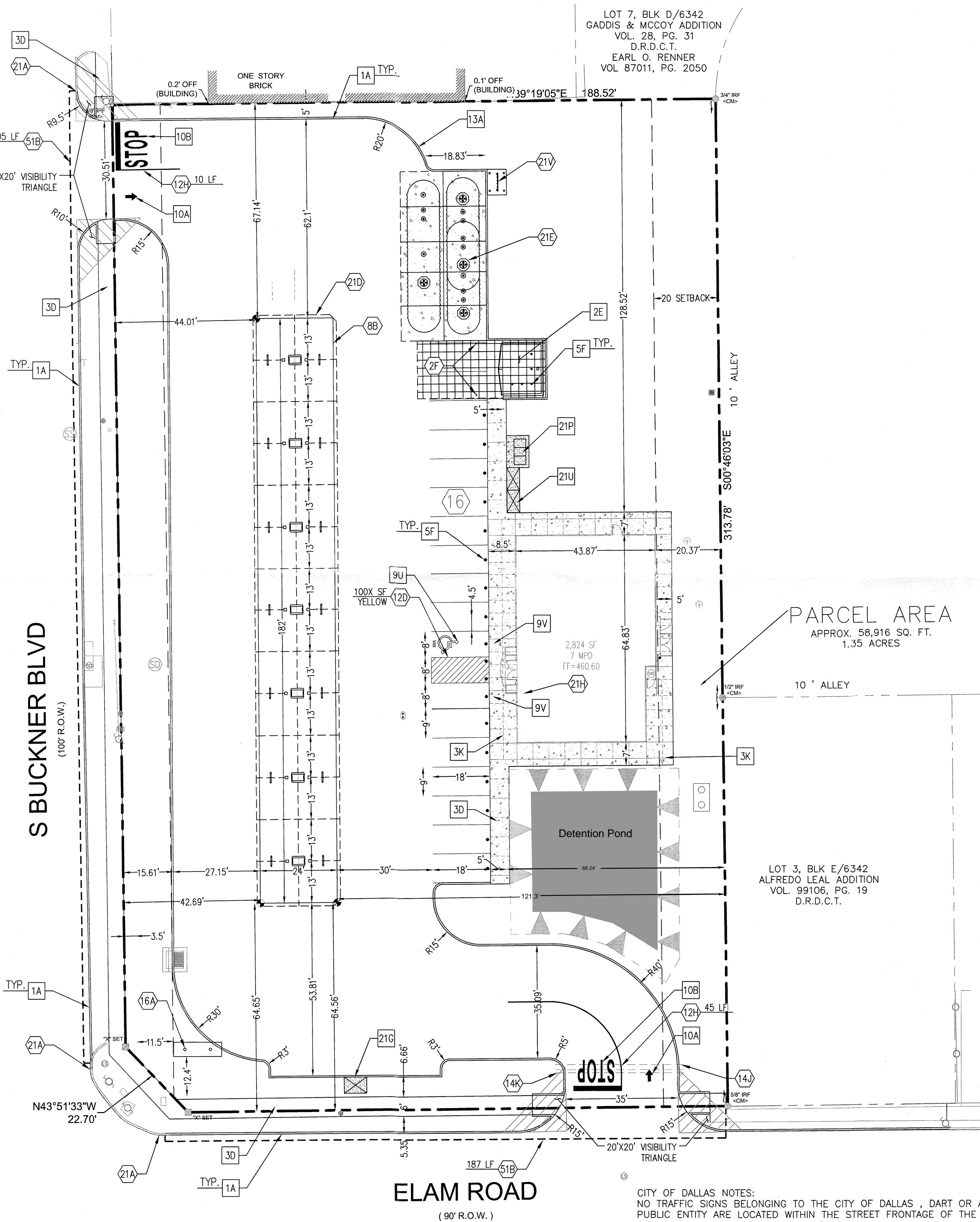
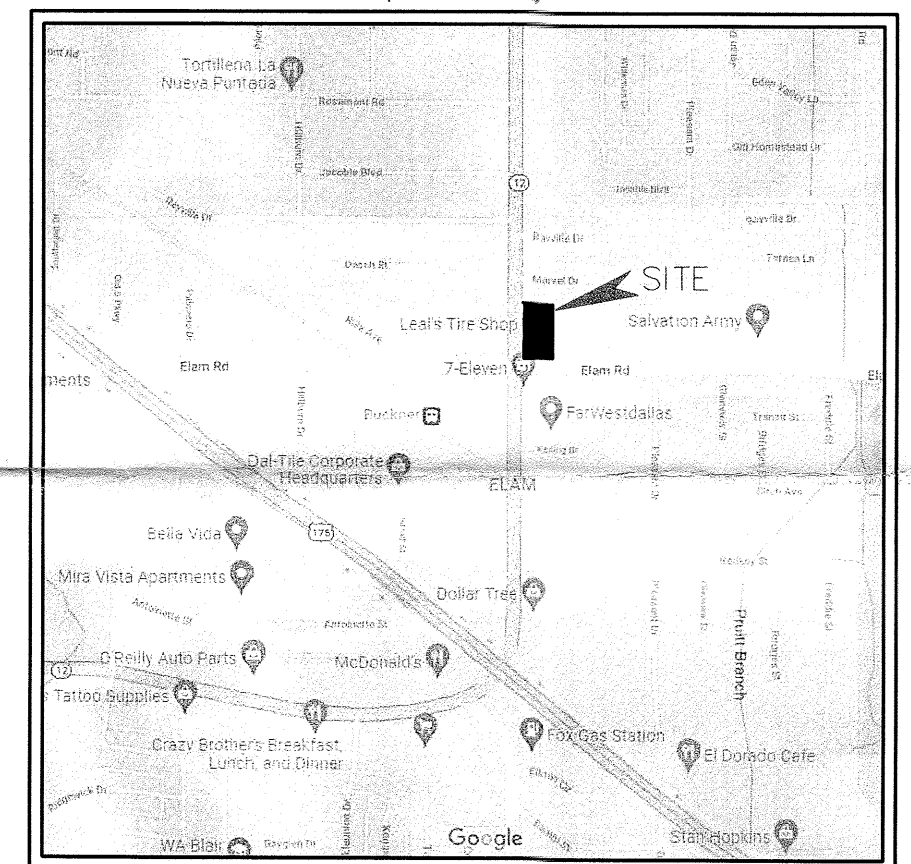
OVERHEAD POWER LINE
STORM DRAIN LINE

STORM DRAIN LINE

CONCRETE SURFACE

ASPHALT SURFACE

(NOT TO SCALE)



CITY OF DALLAS NOTES:
NO TRAFFIC SIGNS BELONGING TO THE CITY OF DALLAS , DART OR ANY OTHER PUBLIC ENTITY ARE LOCATED WITHIN THE STREET FRONTAGE OF THE PROPOSED WORK AREA AND PROPOSED PAVING/DRAINAGE WORK WILL NOT RESULT IN ANY CHANGES TO THE PAVEMENT MARKINGS OF PUBLIC ROADS.

DART ROW CONSTRUCTION NOTES:
DART APPROVAL NEEDED PRIOR TO ANY REMOVAL OR REPLACEMENT OF DART
FACILITIES. CONTRACTOR MAY CONTACT ALI RABIEE, P.E. AT 214-749-2905, OR
RENEE ESSES, AICP AT 241-749-3102

- EXISTING
SIGNAL