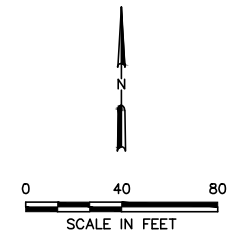
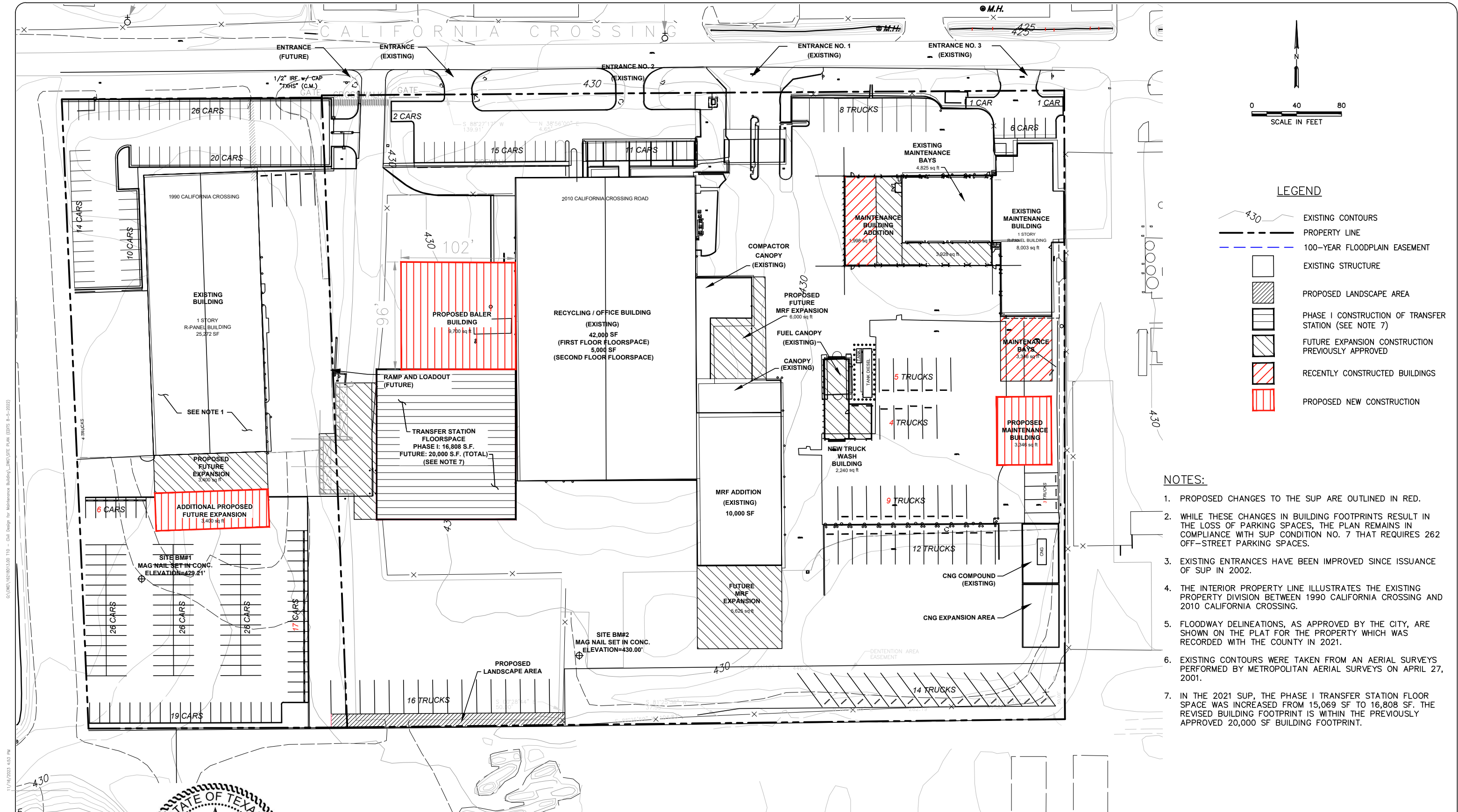


11/16/2023 4:53 PM C:\DWG\16218013.00 T10 - Civil Design for Maintenance Building.dwg SITE PLAN (EDITS 8-5-2022)



- LEGEND**
- EXISTING CONTOURS
  - PROPERTY LINE
  - 100-YEAR FLOODPLAIN EASEMENT
  - EXISTING STRUCTURE
  - PROPOSED LANDSCAPE AREA
  - PHASE I CONSTRUCTION OF TRANSFER STATION (SEE NOTE 7)
  - FUTURE EXPANSION CONSTRUCTION PREVIOUSLY APPROVED
  - RECENTLY CONSTRUCTED BUILDINGS
  - PROPOSED NEW CONSTRUCTION

- NOTES:**
1. PROPOSED CHANGES TO THE SUP ARE OUTLINED IN RED.
  2. WHILE THESE CHANGES IN BUILDING FOOTPRINTS RESULT IN THE LOSS OF PARKING SPACES, THE PLAN REMAINS IN COMPLIANCE WITH SUP CONDITION NO. 7 THAT REQUIRES 262 OFF-STREET PARKING SPACES.
  3. EXISTING ENTRANCES HAVE BEEN IMPROVED SINCE ISSUANCE OF SUP IN 2002.
  4. THE INTERIOR PROPERTY LINE ILLUSTRATES THE EXISTING PROPERTY DIVISION BETWEEN 1990 CALIFORNIA CROSSING AND 2010 CALIFORNIA CROSSING.
  5. FLOODWAY DELINEATIONS, AS APPROVED BY THE CITY, ARE SHOWN ON THE PLAT FOR THE PROPERTY WHICH WAS RECORDED WITH THE COUNTY IN 2021.
  6. EXISTING CONTOURS WERE TAKEN FROM AN AERIAL SURVEYS PERFORMED BY METROPOLITAN AERIAL SURVEYS ON APRIL 27, 2001.
  7. IN THE 2021 SUP, THE PHASE I TRANSFER STATION FLOOR SPACE WAS INCREASED FROM 15,069 SF TO 16,808 SF. THE REVISED BUILDING FOOTPRINT IS WITHIN THE PREVIOUSLY APPROVED 20,000 SF BUILDING FOOTPRINT.



11/16/2023

**PREPARER**  
 SCS ENGINEERS  
 1901 CENTRAL DRIVE, SUITE 550  
 BEDFORD, TEXAS 76021  
 (817) 571-2288  
 CONTACT: KEVIN YARD, P.E.

**APPLICANT/  
 OWNER/DEVELOPER**  
 COMMUNITY WASTE DISPOSAL, LP  
 2010 CALIFORNIA CROSSING  
 DALLAS, TEXAS 75220  
 (972) 392-3900  
 CONTACT: GREG A. ROEMER

REV	DATE	DESCRIPTION	DWN BY	DES BY	CHK BY	APP BY
11/23		PARKING SPOT COUNT LABEL, EDITS AND PARKING SPOT COUNT CONFIRMATION.	ORA	KDY	KDY	KDY
04/23		ADD BALER BUILDING, MAINTENANCE BUILDING, BUILDING EXPANSION, AND NOTE EDITS.	ORA	KDY	KDY	KDY
06/21		ADD CNG EXPANSION AREA, RELOCATE TRUCK PARKING, UPDATE TRANSFER STATION FOOTPRINT	JLJ	KDY	KDY	KDY
08/19		PHASE I OF TRANSFER STATION	JLJ	KDY	KDY	KDY

DATE OF ISSUE: 08/2019  
 DWN BY: ORA  
 DES BY: KDY  
 CHK BY: KDY  
 APP BY: KDY

**SCS ENGINEERS**  
 STEARNS, CONRAD AND SCHMIDT  
 CONSULTING ENGINEERS  
 1901 CENTRAL DRIVE, SUITE 550, BEDFORD, TX 76021  
 PH (817) 571-2288 FAX NO. (817) 571-2188

FOR PERMITTING PURPOSES ONLY

COMMUNITY WASTE DISPOSAL  
 DALLAS, TEXAS  
 2010 CALIFORNIA CROSSING  
 TRANSFER STATION AND MRF ADDITION  
 SITE PLAN

DRAWING NO.  
 1  
 16218013.00 T16