



City of Dallas

Citywide Trail Initiative

Parks, Trails, and The Environment Committee

April 7, 2025

M. Renee Johnson, Deputy Director
Park and Recreation

Presentation Overview



- Background
- Trail Classifications
- Trail Maintenance & Operations
- Trail Assessments & Reports
- FY 2023-24 Achievements
- Next Steps



Background



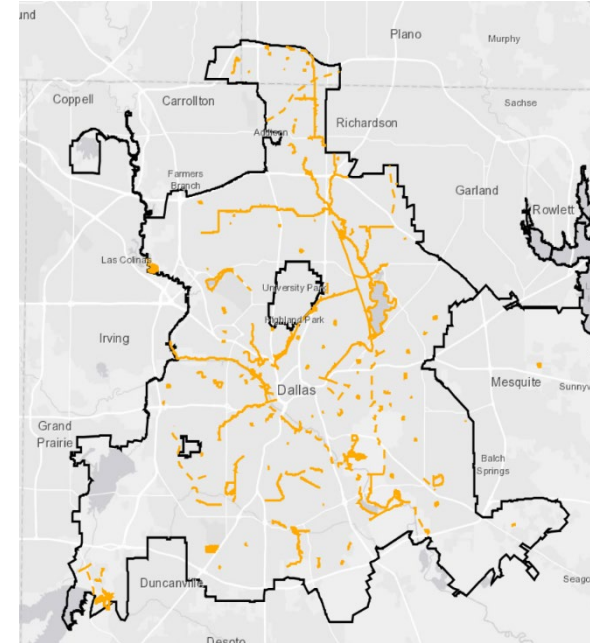
This presentation provides an update on the Citywide Trail Team Initiative



Background



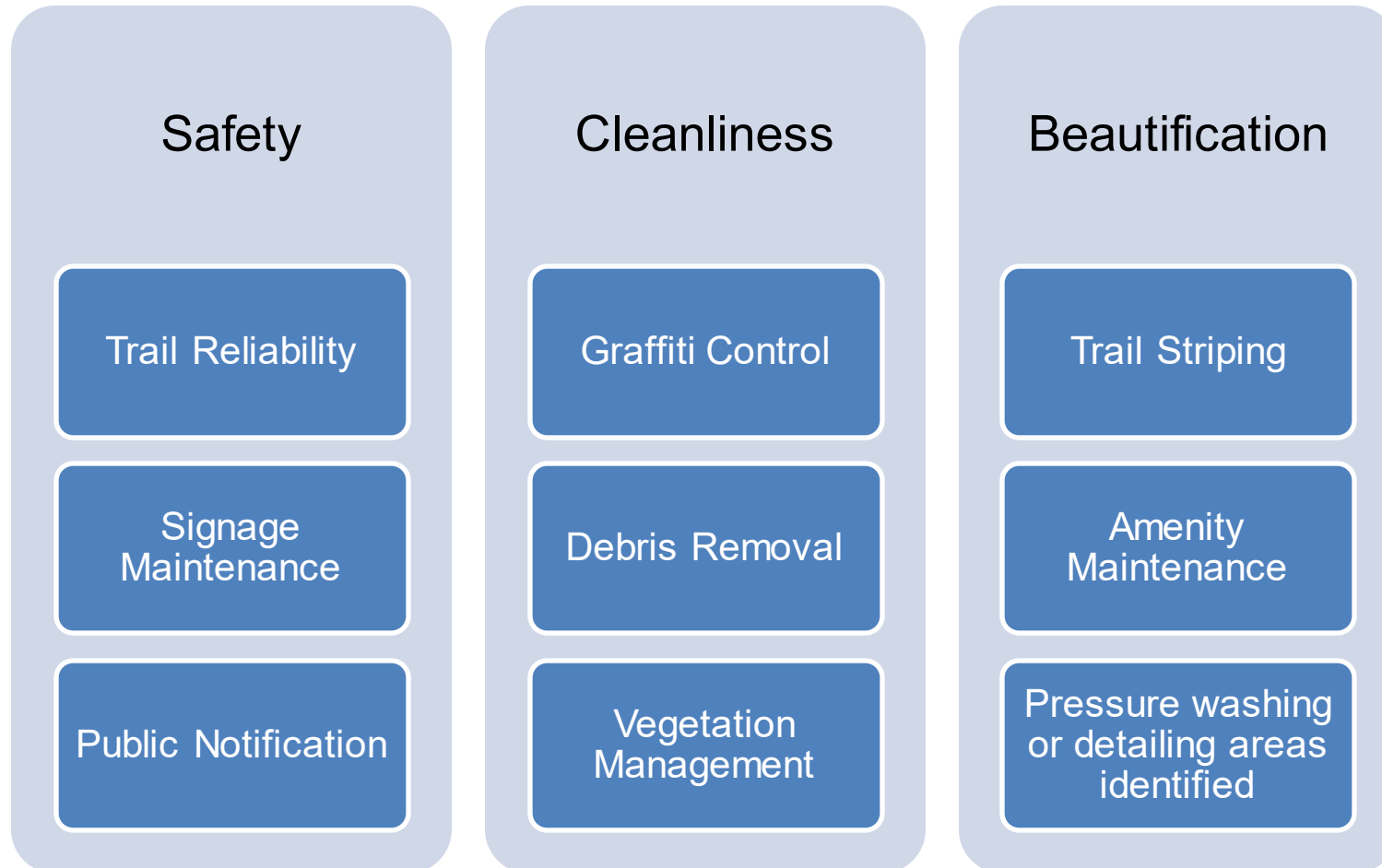
- White Rock Creek Trail was the first trail built in Dallas (est. 1987)
- Trail Inventory
 - Over 150 Trails
 - Over 200 Miles of Existing and Programmed
- Trail Statistics
 - Dallas Area is 385 sq. miles
 - Estimated Trail Area is 1.13% (4.35 sq. miles)
 - Account for 27% of service issues for all six districts combined
 - 38% of the linear trails connect with stationary parks



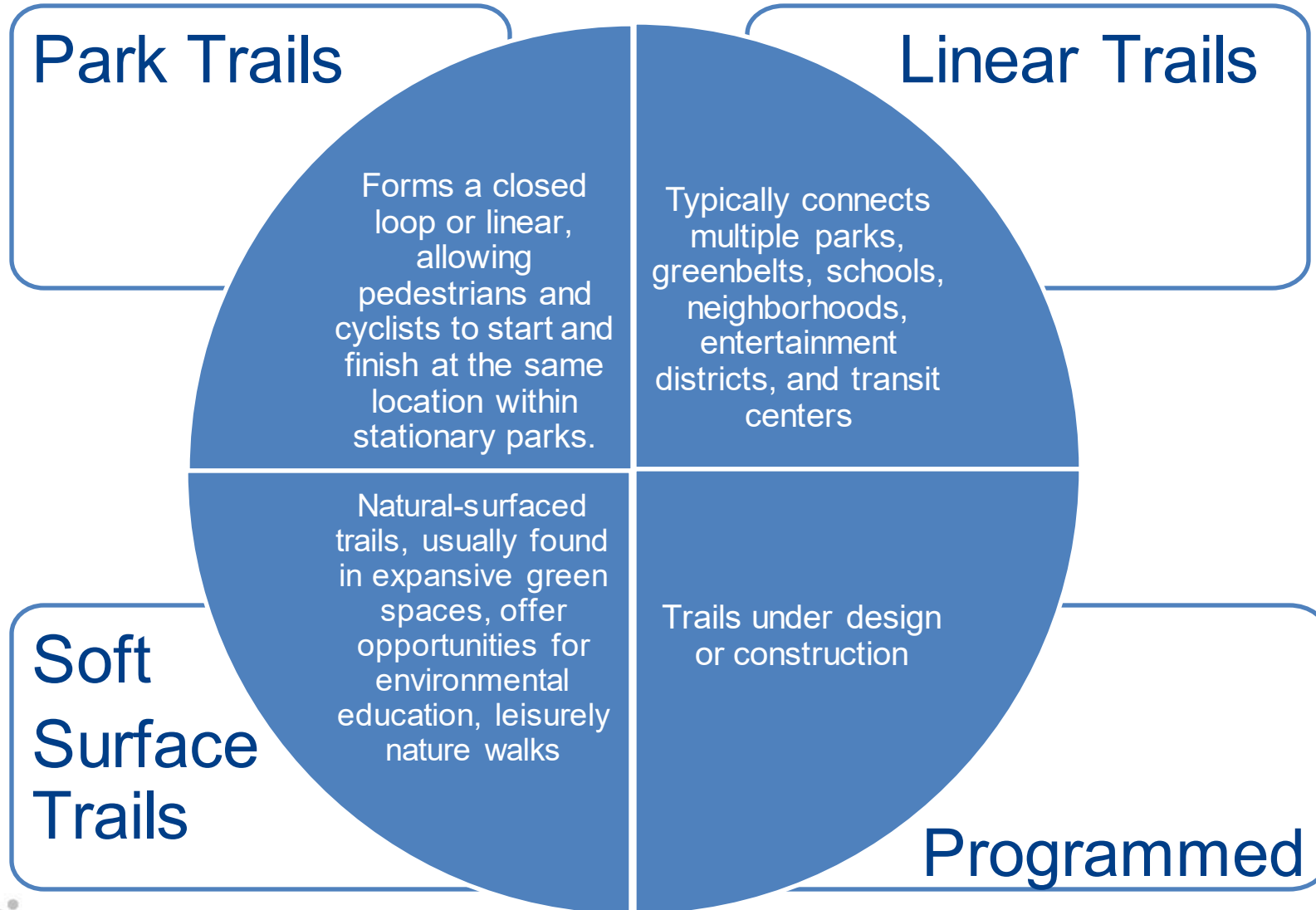
Background



Trail Team Goals



Park Classifications



Trail Classifications



Linear Trails

Paved trails outside of stationary parks

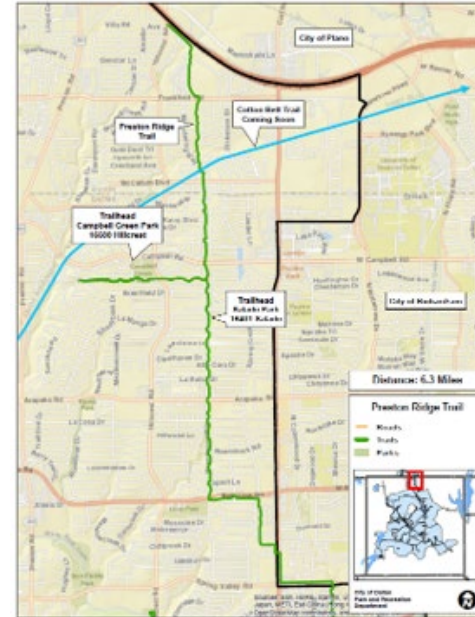
Trail Inventory

40 linear trails

118 linear miles

3 Connectors

Examples: White Rock Creek & Preston Ridge



Kiest Park: 3 Connectors (Portions of stationary park trails that connect linear trails)



Trail Classifications



Programmed Trails

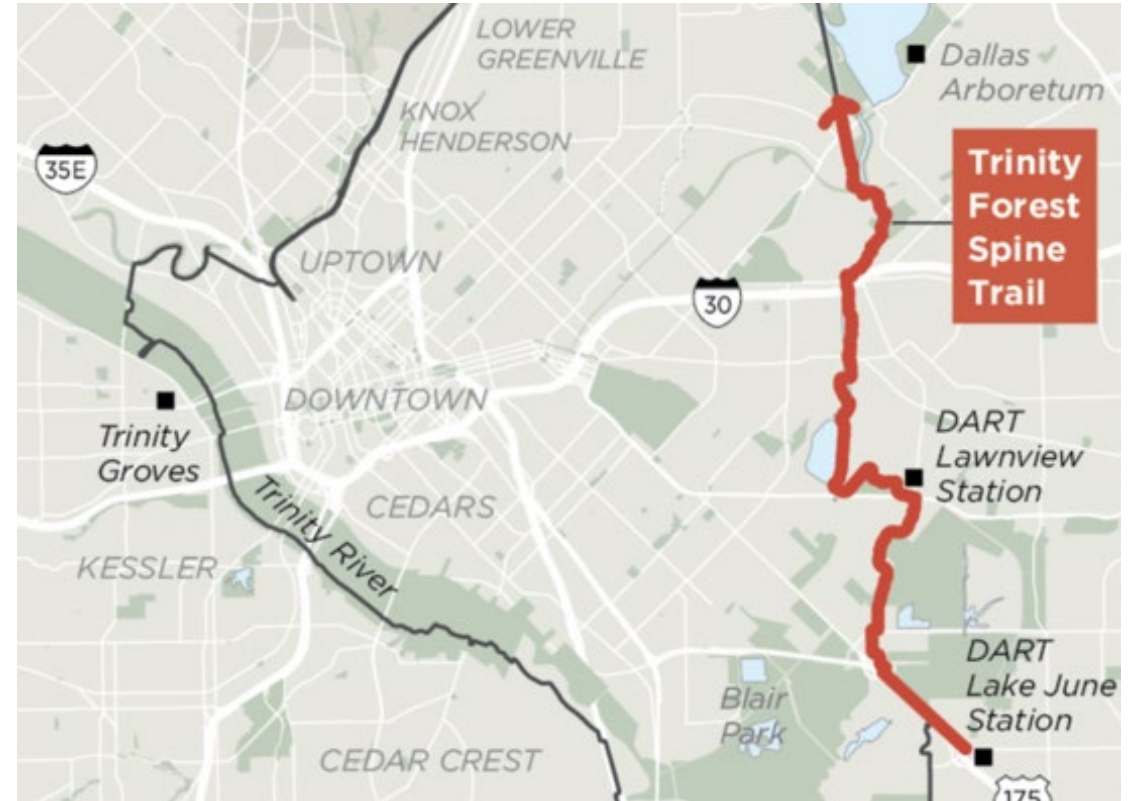
Under design or construction

Future Trail Inventory

14 Trails

34 Miles

Examples: Trinity Spine & Hi Line Connector



Trail Classifications



Soft Surface Trails

Natural walking paths

Trail Inventory

18 Trails

30 Miles

Examples: Harry Moss and L.B. Houston



Trail Classifications



Park Trails

Paved trails that make a loop and/or linear trails within stationary parks

Trail Inventory

81 park trails

35 miles of park trails

Examples: Kiest Park & Crawford Memorial Park



Trail Maintenance & Operations



Scope of Work

Trail Striping
Installation
Inspections

Graffiti Removal

Pressure Washing
911 Mile Markers (Police & Fire)
Installation
Reporting



Trail Striping @ Katy Trail



Trail Maintenance & Operations



Scope of Work

Vegetation Management

Routine Assessment and Maintenance

Amenity Inspections

Bridges

Rails

Fencing

Signage

Benches

Amenity Inspections

Repairs

Installation



Vegetation Management @ SoPac Trail



Trail Maintenance & Operations



Scope of Work

Eco Counters

Installation

Inspections

Repair

Data collecting and reporting

Encroachment

Identifying

Reporting unauthorized property

Erosion Control, Drainage, and Hydro-Mulching



Eco-Counter Installation @ Katy Trail (Fitzhugh Ave)



Trail Maintenance & Operations



Inspections and Assessments *Operating Procedures*

1. Inspection Report
2. Safety & Priority Assessment Report
3. Weather Availability*
4. Funding for Product
5. Operation Schedule and Expectations
6. Jobs Performed
7. Final Report

Weather Availability Chart

	FREEZING		
SUNNY	EROSION CONTROL	GRAFFITI	DRAINAGE
	SIGNAGE	VEGETATION MANAGEMENT	AMENITIES
	BRIDGES/RAILS/FENCES	INSPECTION	ENROACHMENTS
		ECO-COUNTERS	
RAINY		GRAFFITI	
	SIGNAGE	VEGETATION MANAGEMENT	AMENITIES
	BRIDGES/RAILS/FENCES	INSPECTION	ENROACHMENTS
		ECO-COUNTERS	





District Shared Cost Analysis

While maintaining the trails, material costs for various jobs are expected based on prior assessments. Costs are estimated as a percentage of the trail, reflecting recent assessments and maintenance requirements in each district.



Trail Assessments & Reports



Inspections & Assessments

- Bridges
- Rails
- Fencing
- Concrete*
- Signage
- Amenities

	INSIGNIFICANT	MINOR	SIGNIFICANT	MAJOR	SEVERE
CORROSION					
SCALING					
CRACKING					
SPALLING					
SETTLEMENT					

*Concrete Assessment Chart



Trail Assessments & Reports



Current Conditions Assessment

Ash Creek Est. 2023

ASH CREEK										
AMOUNT IN MONTHS OF OLDEST CONCRETE POURED	19	•								
AVERAGE MONTHS BETWEEN ALL SECTIONS OF CONCRETE	13	•								
PERCENTAGE OF CONCRETE PROBLEM PADS PER TRAIL LENGTH	0%	•								
MILES OF TRAILS	0.43	•								
FEMA FLOOD PLAIN RISK SCORE (REGARDLESS OF AREA COVERED)	3					•				
PERCENTAGE OF AREA FOR TRAILS IN FLOOD PLAINS (REGARDLESS OF RISK)	100%									•
PERCENTAGE OF POOR DRAINAGE AREAS PER TRAIL LENGTH	0	•								
PERCENTAGE OF EROSION SITES PER TRAIL LENGTH	0%	•								
PERCENTAGE OF MILE MARKERS PRESENT/VISIBLE	0%									•
PERCENTAGE OF MISSING SIGNAGE/UNNECESSARY SIGNAGE	0%	•								
PERCENTAGE OF 311'S IN THE PAST YEAR PER TRAIL LENGTH	0	•								
PERCENTAGE OF SAFETY 311'S IN THE PAST YEAR PER TRAIL LENGTH	0	•								
PERCENTAGE OF AMENITIES PER TRAIL LENGTH	0%	•								
PERCENTAGE OF TRAIL NOT STRIPED	0%	•								
PERCENTAGE OF GRAFFITI SITES PER TRAIL LENGTH	0%	•								
PERCENTAGE OF BRIDGES/FENCES/RAIL PROBLEM SITES PER TRAIL LENGTH	0%	•								
PERCENTAGE OF IMMEDIATE VEGETATION CONTROL SITES	0%	•								
PERCENTAGE OF NECESSARY POWERWASHING SITES PER TRAIL LENGTH	0%	•								

AASHTO Guidelines
 "American Association of State Highway and
 Transportation Officials"

Dallas Guidelines

23%



Trail Assessment & Reports



Current Conditions Assessment

White Rock Creek Est. 1987

WHITE ROCK CREEK										
AMOUNT IN MONTHS OF OLDEST CONCRETE POURED	480									•
AVERAGE MONTHS BETWEEN ALL SECTIONS OF CONCRETE	292.5									•
PERCENTAGE OF CONCRETE PROBLEM PADS PER TRAIL LENGTH	62%									•
MILES OF TRAILS	9.16								•	
FEMA FLOOD PLAIN RISK SCORE (REGARDLESS OF AREA COVERED)	3					•				
PERCENTAGE OF AREA FOR TRAILS IN FLOOD PLAINS (REGARDLESS OF RISK)	100%									•
PERCENTAGE OF POOR DRAINAGE AREAS PER TRAIL LENGTH	32%									•
PERCENTAGE OF EROSION SITES PER TRAIL LENGTH	14%									•
PERCENTAGE OF MILE MARKERS PRESENT/VISIBLE	M									•
PERCENTAGE OF MISSING SIGNAGE/UNNECESSARY SIGNAGE	4%					•				
PERCENTAGE OF 311'S IN THE PAST YEAR PER TRAIL LENGTH	21.26%								•	
PERCENTAGE OF SAFETY 311'S IN THE PAST YEAR PER TRAIL LENGTH	15.70%								•	
PERCENTAGE OF AMENITIES PER TRAIL LENGTH	9.80%								•	
PERCENTAGE OF TRAIL NOT STRIPED	68.00%								•	
PERCENTAGE OF GRAFFITI SITES PER TRAIL LENGTH	11%									•
PERCENTAGE OF BRIDGES/FENCES/RAIL PROBLEM SITES PER TRAIL LENGTH	4%								•	
PERCENTAGE OF IMMEDIATE VEGETATION CONTROL SITES	9%								•	
PERCENTAGE OF NECESSARY POWERWASHING SITES PER TRAIL LENGTH	13%									•

AASHTO Guidelines
 "American Association of State Highway and
 Transportation Officials"

Dallas Guidelines

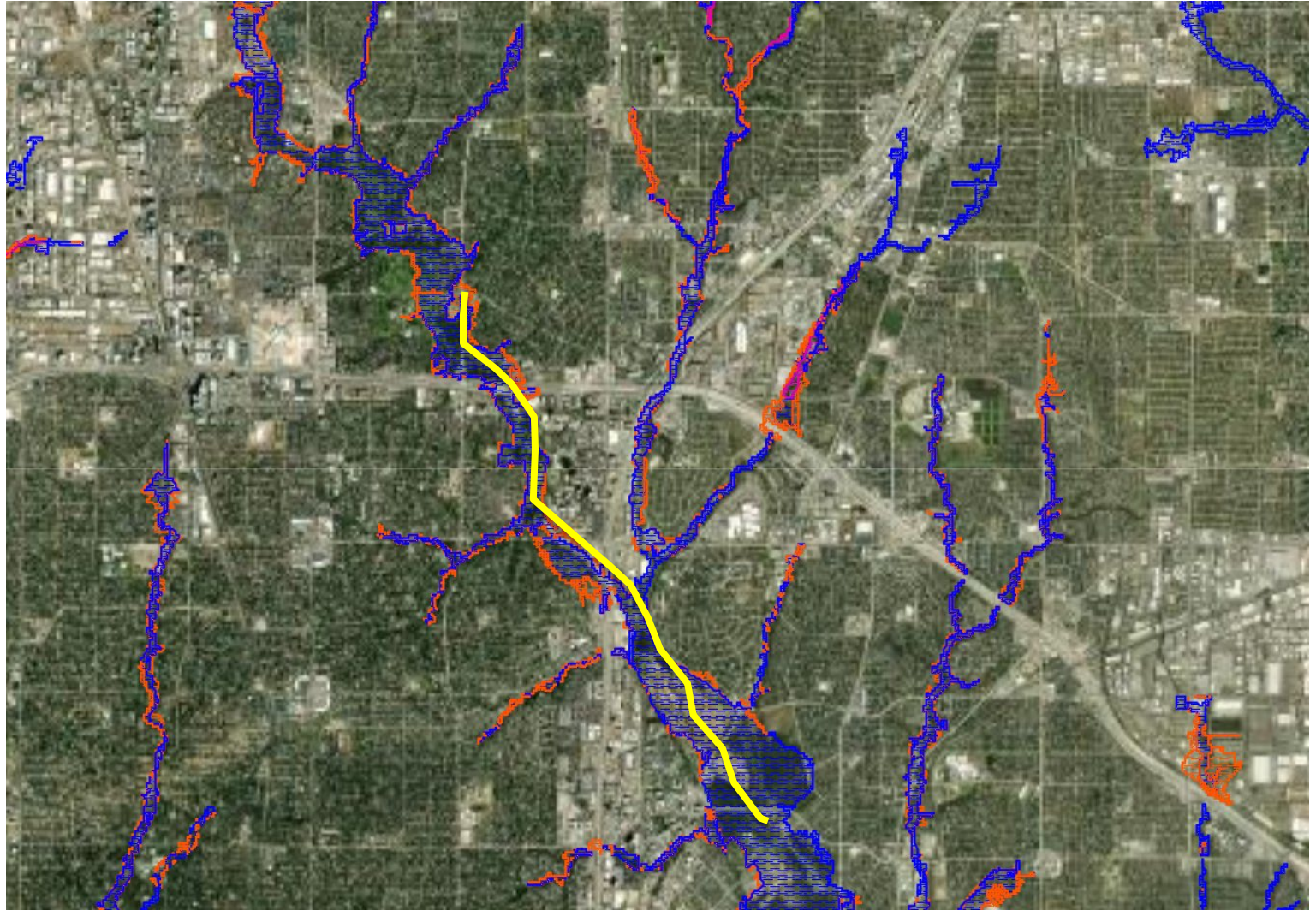
78%



Trail Assessments & Reports



FEMA Flood Plain Mapping White Rock Creek Est. 1987



Trail Assessments & Reports



Safety Assessment Score Bi-Annual Assessment

Mile Marker: 100 Overall Rating: 37% Total: 11

Rating:		(0) N/A	(1) Insignificant	(2) Minor	(3) Significant	(4) Major	(5) Severe
Mile Markers	0	I					
Concrete	0	I					
Infrastructure	4			II			
Drainage	0	I					
Erosion	0	I					
Vegetation	0	I					
Signage	3		III				
Striping	0	I					
Encroachments	0	I					
Litter	4					I	
Graffiti	0	I					
Amenities	0	I					
Eco-Counters	0	I					

Comments:

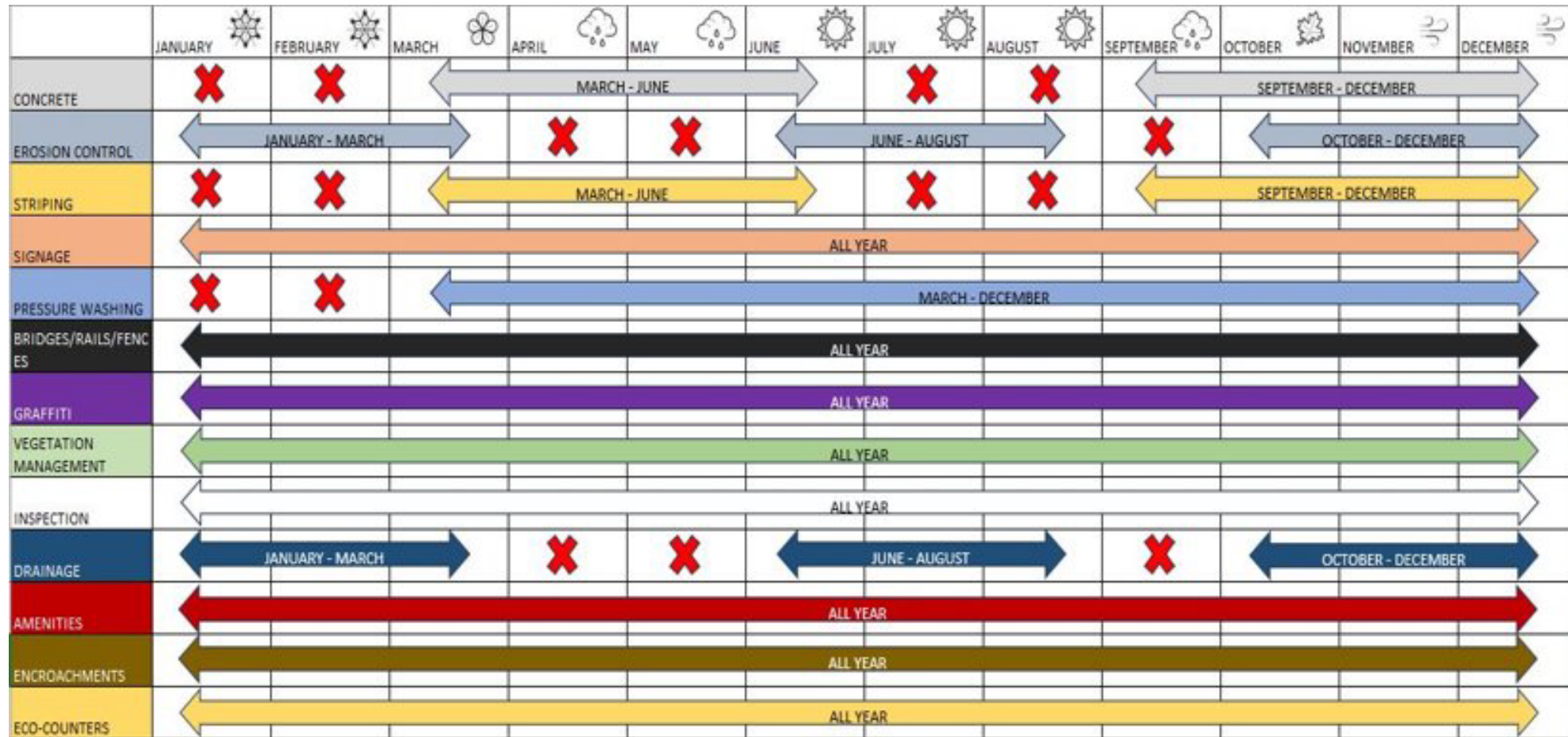
Mile Marker: 101 Overall Rating: 25% Total: 7



Trail Assessments & Reports













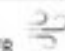

Annual Job Function Calendar



Trail Assessment & Reports



Average Miles Per Month Calendar

	JANUARY 	FEBRUARY 	MARCH 	APRIL 	MAY 	JUNE 	JULY 	AUGUST 	SEPTEMBER 	OCTOBER 	NOVEMBER 	DECEMBER 
CONCRETE	WHEN POSSIBLE	WHEN POSSIBLE	29	29	29	29	WHEN POSSIBLE	WHEN POSSIBLE	29	29	29	29
EROSION CONTROL	29	29	29	WHEN POSSIBLE	WHEN POSSIBLE	29	23	23	WHEN POSSIBLE	23	23	23
STRIPING	WHEN POSSIBLE	WHEN POSSIBLE	29	29	29	29	WHEN POSSIBLE	WHEN POSSIBLE	29	29	29	29
SIGNAGE	20	20	20	20	20	20	20	20	20	20	20	20
PRESSURE WASHING	WHEN POSSIBLE	WHEN POSSIBLE	29	29	29	29	20	20	20	20	20	20
BRIDGES/RAILS/FENCES	20	20	20	20	20	20	20	20	20	20	20	20
GRAFFITI	20	20	20	20	20	20	20	20	20	20	20	20
VEGETATION MANAGEMENT	20	20	20	20	20	20	20	20	20	20	20	20
INSPECTION	20	20	20	20	20	20	20	20	20	20	20	20
DRAINAGE	29	29	29	WHEN POSSIBLE	WHEN POSSIBLE	29	23	23	WHEN POSSIBLE	23	23	23
AMENITIES	20	20	20	20	20	20	20	20	20	20	20	20
ENCROACHMENTS	20	20	20	20	20	20	20	20	20	20	20	20
EEO-COUNTERS	20	20	20	20	20	20	20	20	20	20	20	20



Major Accomplishments FY24



911 Markers Miles – 5 Miles, AT&T Trail and Trinity Forest Trail

Vegetation Management – 120 Loads @ 378 cubic yards = 45,360 cb yds

Eco Counters – 16 Counters installed and repaired at various locations

Striping Miles – 3.5 Miles at Katy Trail

Storm Clean up – 1 event of flooding and debris clearing

SOP – Proposed, reviewed, and approved

Trail Emergency Package – For FY24-25 purchase

Construction Oversight – Working in conjunction with other departments PMO, P&D, DWU, DFR, PBW, and Transportation

Trail Liaison – Working with CPC's as well as the MAC team

Trail Crosswalks Striped - 17 of 18 throughout White Rock Lake

ADA Barriers Repaired – 200 plus assessed on Sopac Trail





City of Dallas

Citywide Trail Initiative

**Parks, Trails, and The
Environment Committee**

April 7, 2025

M. Renee Johnson, Deputy Director
Park and Recreation
