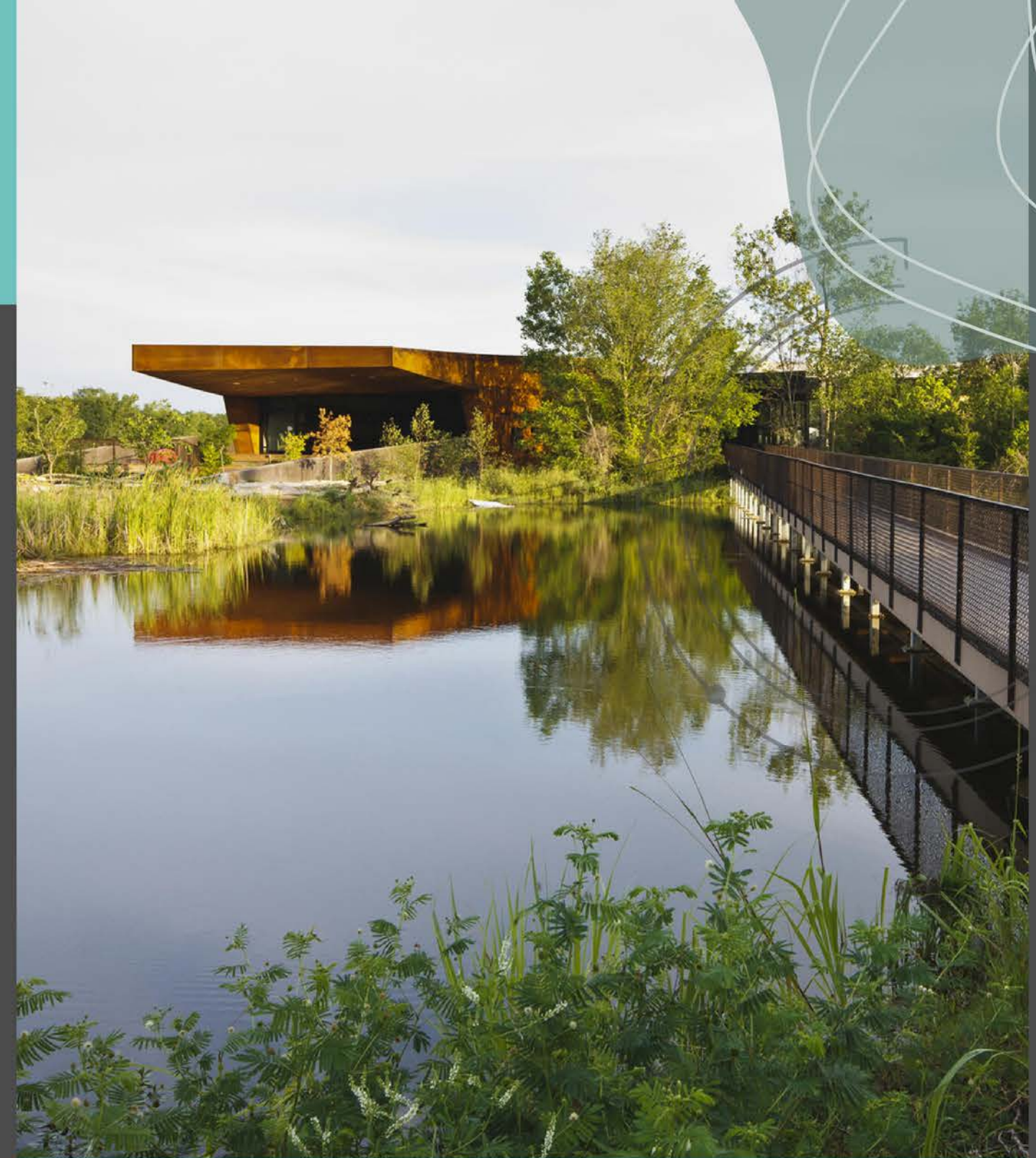


# WE ARE THE TRINITY RIVER AUDUBON CENTER

*Located just ten miles south of downtown Dallas, we are Dallas' gateway to explore the amazing resources of the 6,000-acre Great Trinity Forest.*



**June 1, 2023**





*We are a...*

**nature center, bird sanctuary & a  
social justice success story**

*With...*

**5 miles of trails across 120  
acres of Dallas'  
Great Trinity Forest**

*Located near...*

**the growing communities of  
Council Districts 8, 7, 5, and 4.**



**Audubon**

Trinity River  
Audubon Center





## A FAVORITE FIELD TRIP DESTINATION

**100%**

booked for 2022/23  
DISD spring semester

**223K+**

student visitors served  
over 15 years  
(223 197 to be exact!)



## A BIRDER'S PARADISE

**200+**

different bird species  
observed annually

PUBLIC  
CONSERVATION  
EDUCATION  
PROGRAMS  
REACHING

**2K+**  
people  
per year



## A FREE NATURE CENTER FOR DALLAS TO ENJOY

**210%  
INCREASE**

in visitors since going free

**5 MILES**

of nature trails





...BUT, TO SUPPORT OUR  
GROWTH, OUR HABITAT  
IS IN NEED OF AN UPGRADE

...G is NATURAL

Because floodplain land is flat and close to water, people tend to build there. It's a natural choice until the floods. Can you see why it's to protect a floodplain?

#### Typical Flow

During most of the year, the Trinity River flows slowly, and stays within its main channel.

#### 100-year Flood, no levees

During heavy rain, the Trinity River flows fast, and stays within its main channel.

#### 100-year Flood, with levees

During heavy rain, the Trinity River flows fast, and stays within its main channel.



Audubon

Trinity River  
Audubon Center



# INTERIOR EXHIBIT: CURRENT CHALLENGES

## BROKEN

- Nearly 50% of our indoor space features broken exhibits.

## UNENGAGING

- We lack tactile, hands-on features to engage visitors at different ages and abilities.

## OUTDATED

- Exhibit content needs an update to reflect the latest conservation approaches & new discoveries.

# EXTERIOR EXHIBIT: CURRENT CHALLENGES

## DANGEROUS

- Native wildlife has negatively impacted plumbing functionality & originally intended use.

## INEFFICIENT

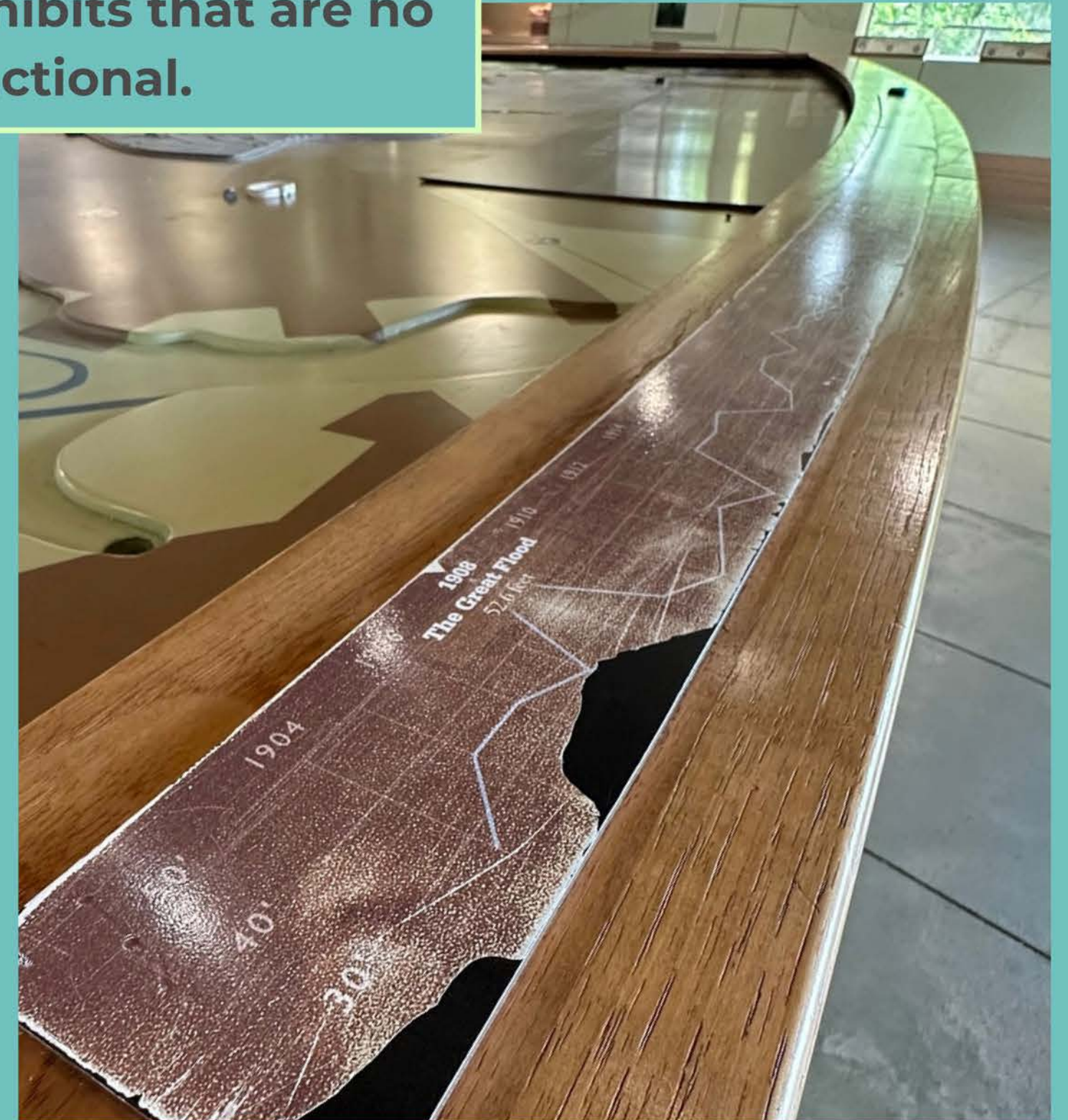
- Outdoor space is uncovered and inaccessible, making it difficult to maintain or use safely in Texas weather.

## UNINVITING

- Lack of exhibit features give no reason to linger or explore, making this a pass-thru space.



Nearly 50% of our exhibit space is filled with large exhibits that are no longer functional.



...G is NATURAL

Because floodplain land is flat and close to water, people tend to build there. It's a natural choice until the floods. Can you see why it's to protect a floodplain?



Outside, aquatic exhibits became unstable in the hot and cold swings of Texas weather, leaving valuable space nonfunctional & underutilized.







**AFTER:** An interactive destination for conservation education







# Trinity River Audubon Center Site

## The Forest

Audubon opens its first urban Audubon Center in Prospect Park, Brooklyn, New York; the center serves 50,000 visitors annually. The last free-flying California Condor is released back into the wild with more than 40 others.



## The River

Audubon opens its first urban Audubon Center in Prospect Park, Brooklyn, New York; the center serves 50,000 visitors annually. The last free-flying California Condor is released back into the wild with more than 40 others.



## The Site

Five distinct eco-habitats here at the 130-acre site



Audubon opens its first urban Audubon Center in Prospect Park, Brooklyn, New York; the center serves 50,000 visitors annually. The last free-flying California Condor is released back into the wild with more than 40 others.



## Grasses

Audubon opens its first urban Audubon Center in Prospect Park, Brooklyn, New York; the center serves 50,000 visitors annually. The last free-flying California Condor is released back into the wild with more than 40 others.



## Ponds & Wetlands

Audubon opens its first urban Audubon Center in Prospect Park, Brooklyn, New York; the center serves 50,000 visitors annually. The last free-flying California Condor is released back into the wild with more than 40 others.

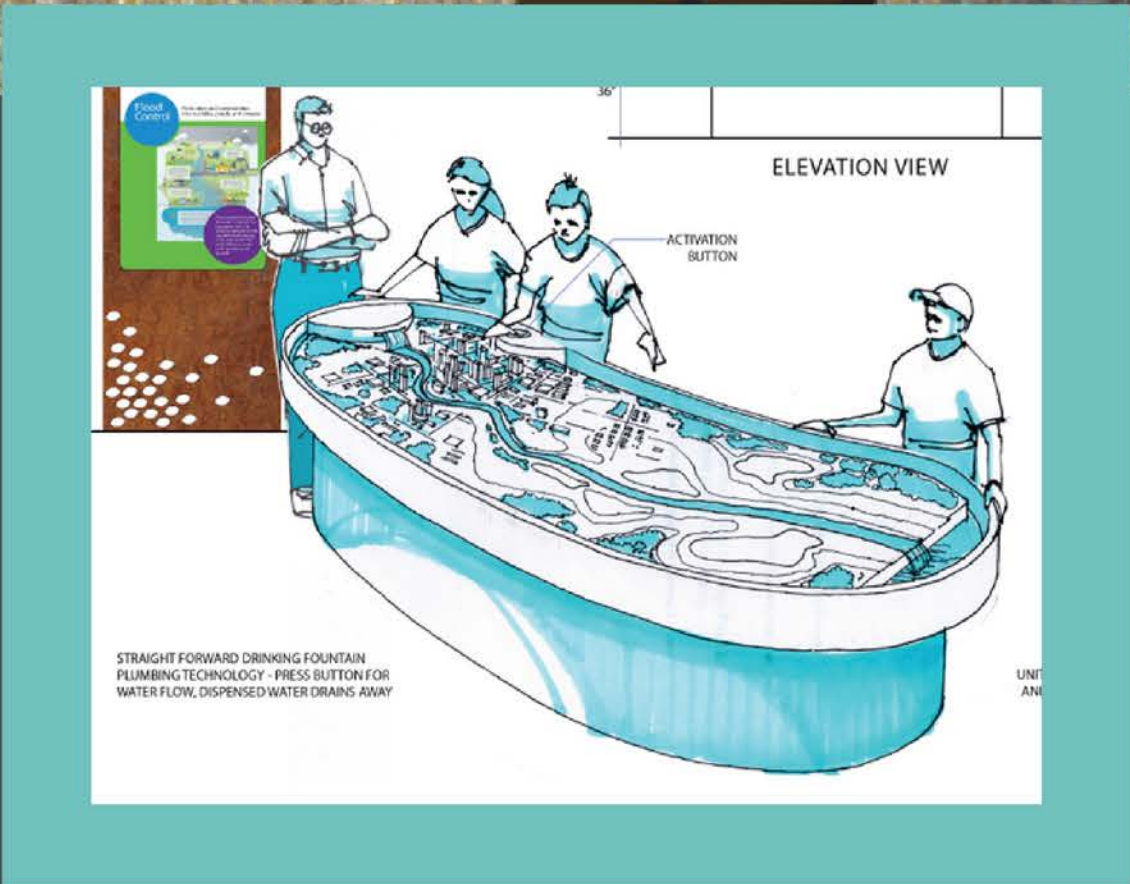
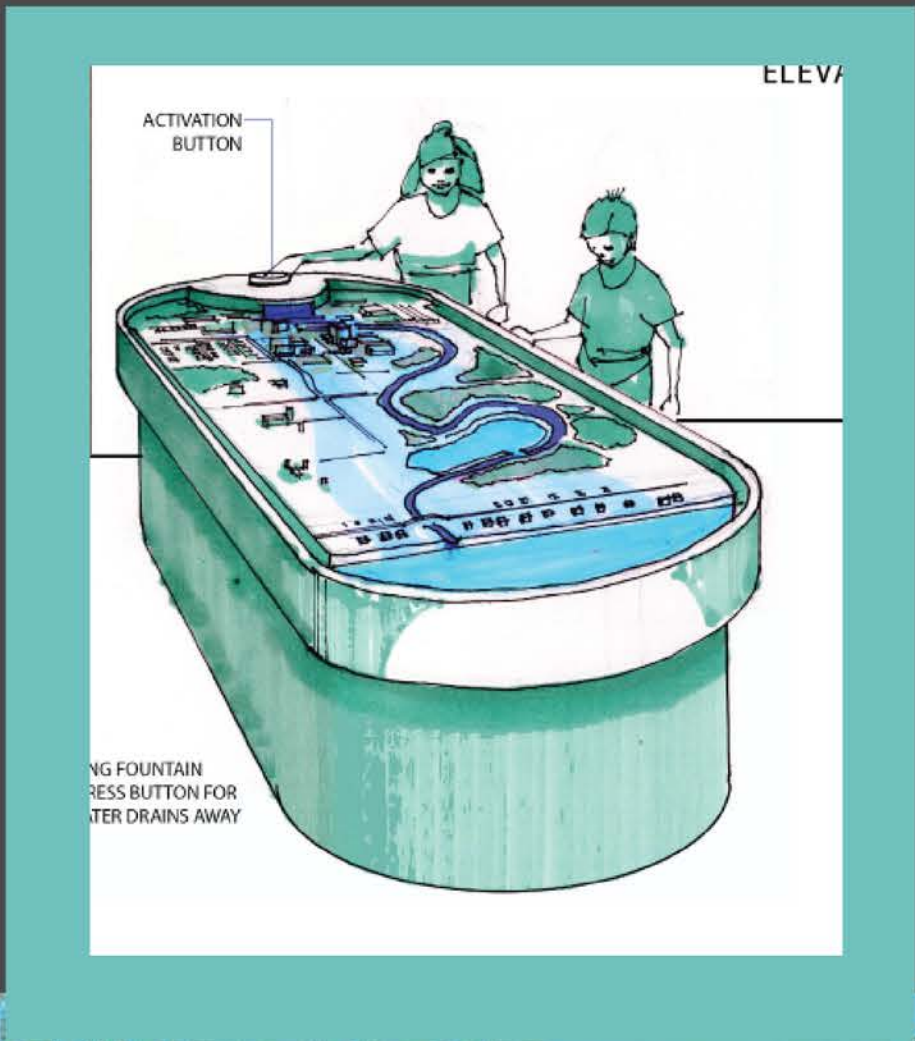
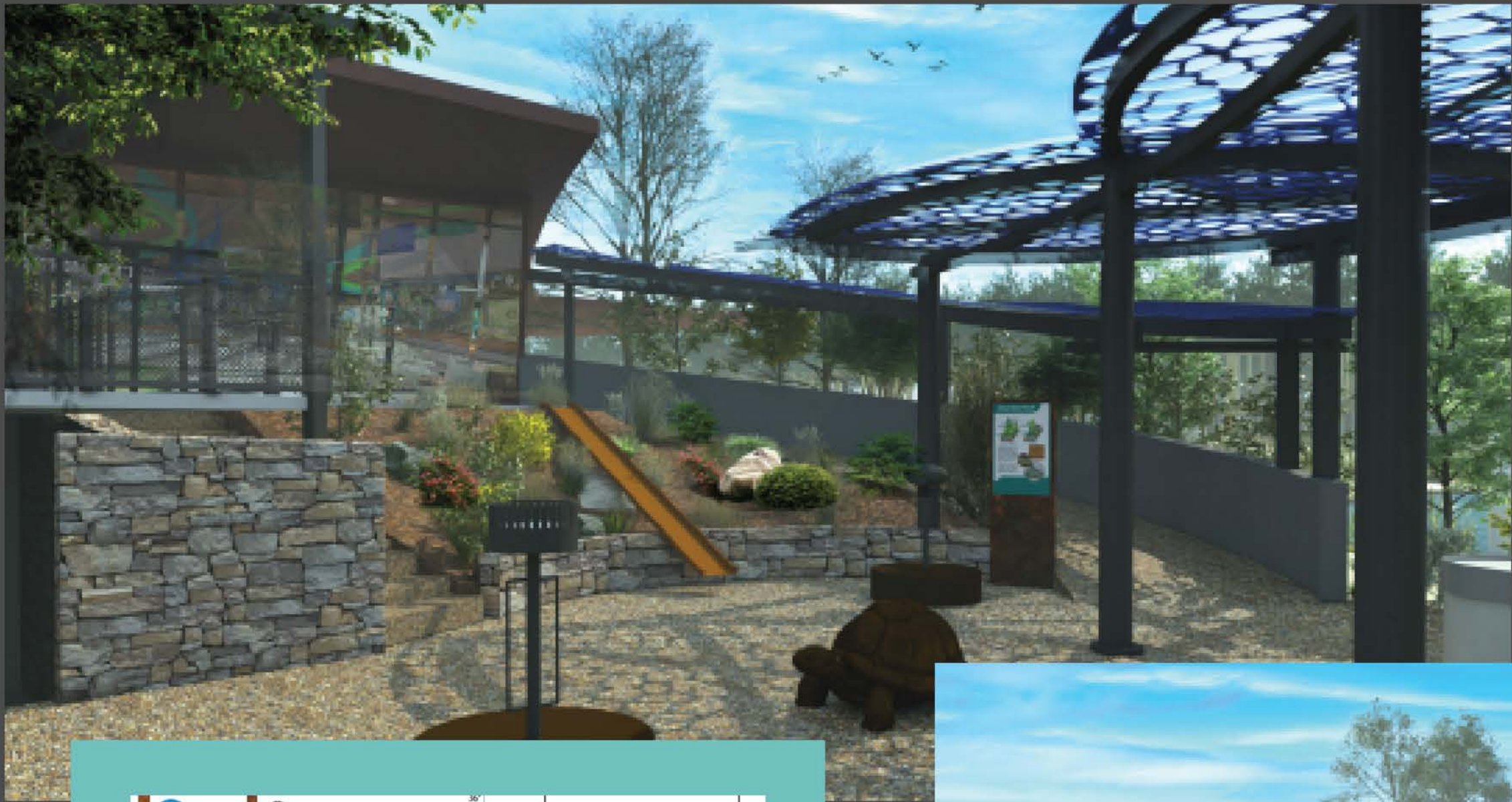


## Blackland Prairie

Audubon opens its first urban Audubon Center in Prospect Park, Brooklyn, New York; the center serves 50,000 visitors annually. The last free-flying California Condor is released back into the wild with more than 40 others.

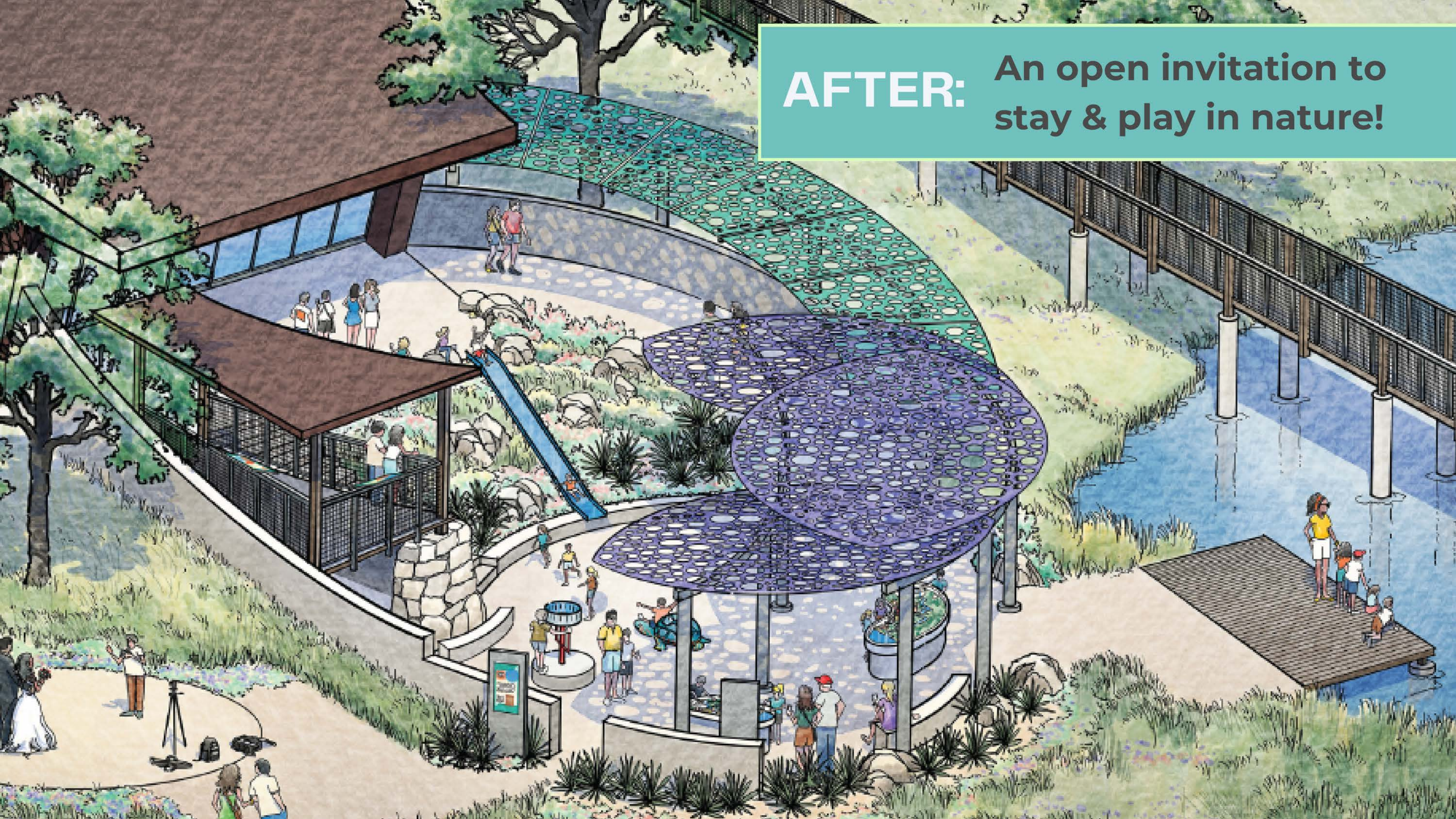








**AFTER:** An open invitation to  
stay & play in nature!









# AUDUBON REQUEST

## BOND FUNDING

CITY OF DALLAS

**\$4.3M**

for interior &  
exterior exhibit  
remodel

## AUDUBON

**\$1M**

commitment

---

\$55K SPENT THUS FAR



The background image shows a close-up, low-angle view of a building's exterior. The upper portion of the image is dominated by horizontal wooden planks, likely part of a roof or a wall, showing natural wood grain and some weathering. Below this, a dark, shadowed area reveals a mural on a vertical surface. The mural features stylized birds in flight against a backdrop of soft, pastel-colored clouds in shades of yellow, white, and light blue. The overall lighting is soft, suggesting an overcast day or shaded area.

## **CITY OF DALLAS: RECOMMENDED FACILITY IMPROVEMENTS**



# INFRASTRUCTURE: CURRENT CHALLENGES

Audubon invested \$50K in building improvements in 2021 and 2022. Additional challenges and expenses include:

- Deteriorating ducts and lighting, contributing to increased pest control needs (*\$3K for wasps alone in 2022*)
- Aging HVAC system (*nearly \$40K in repairs in 2022*)
- Recurring plumbing repairs
- Boardwalk repairs
- Exterior siding falling off
- Fire system repairs (*\$3700 for repairs in 2022*)



**Aging ducts and lighting have contributed to ongoing pest control issues and building maintenance requests.**

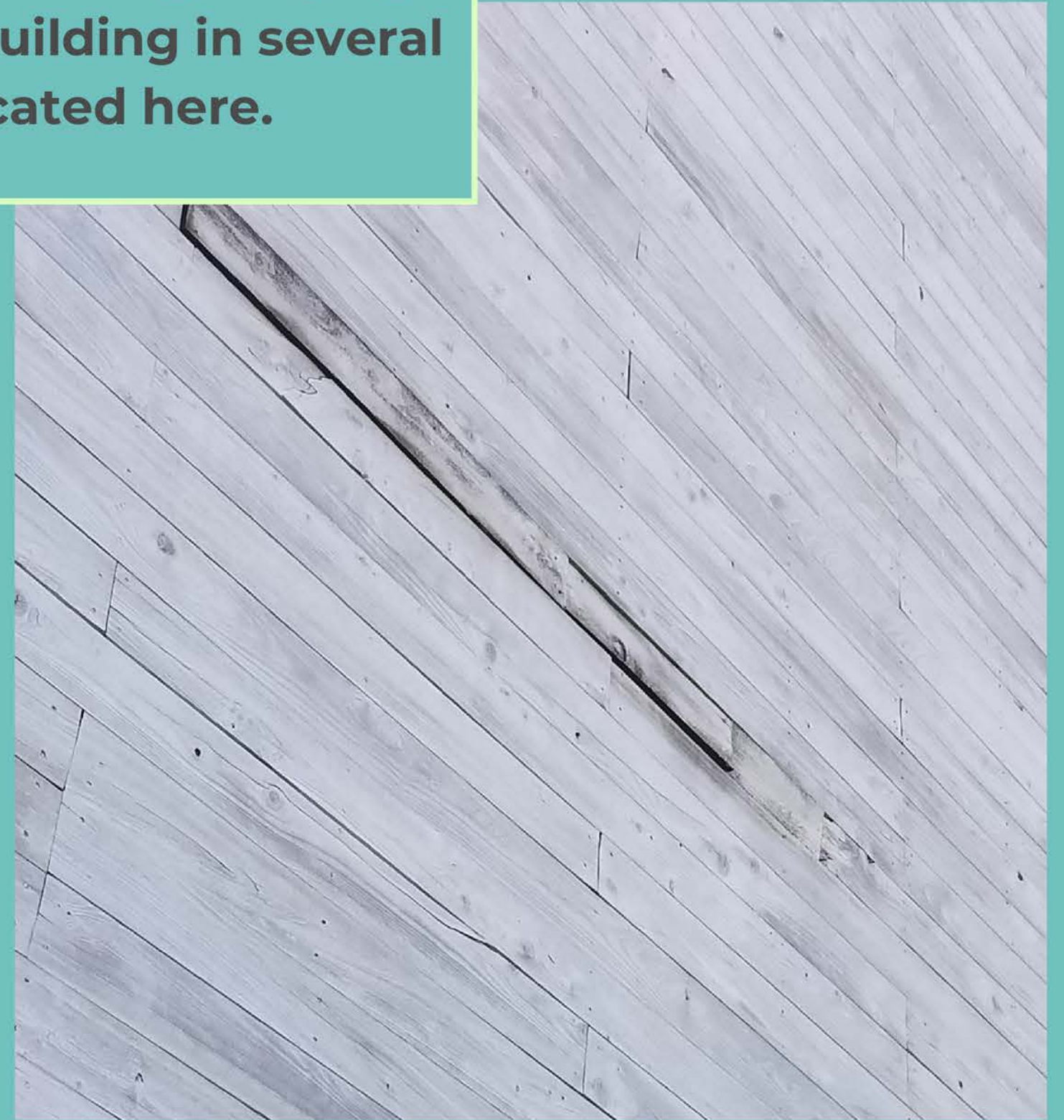


...NG is NATURAL

Because floodplain land is flat and close to water, people tend to build there. It's a natural choice until the floods. Can you see why it's to protect a floodplain?



**The steel and wood siding is aging and falling off the building in several areas as indicated here.**



...G is NATURAL

Because floodplain land is flat and close to water, people tend to build there. It's a natural choice until the floods. Can you see why it's to protect a floodplain?





# THANK YOU!



[www.TrinityRiverAudubon.org](http://www.TrinityRiverAudubon.org)



[@TrinityRiverAudubonCenter](https://www.facebook.com/TrinityRiverAudubonCenter)



[@TrinityRiverAudubonCenter](https://www.instagram.com/TrinityRiverAudubonCenter)



Audubon

Trinity River  
Audubon Center