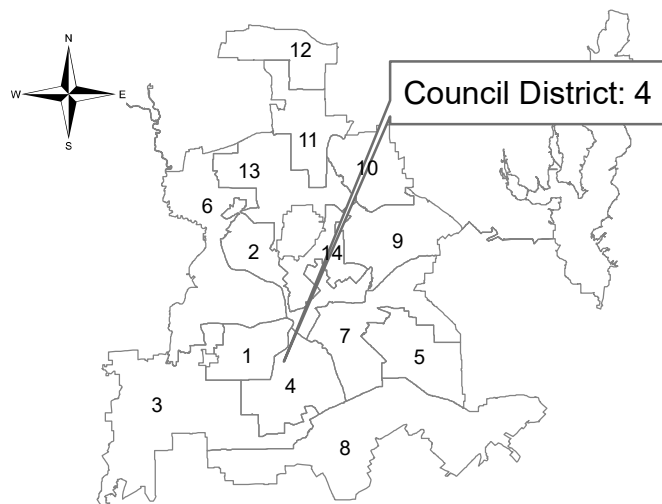


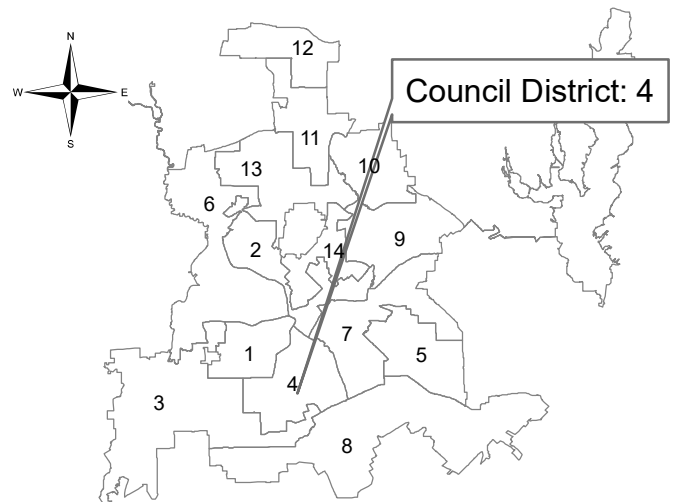
Marsalis Avenue
from north of Winters Street north



**Dallas Water Utilities
Contract No. 22-215/216
Water and Wastewater Main Installations
at 10 Locations**



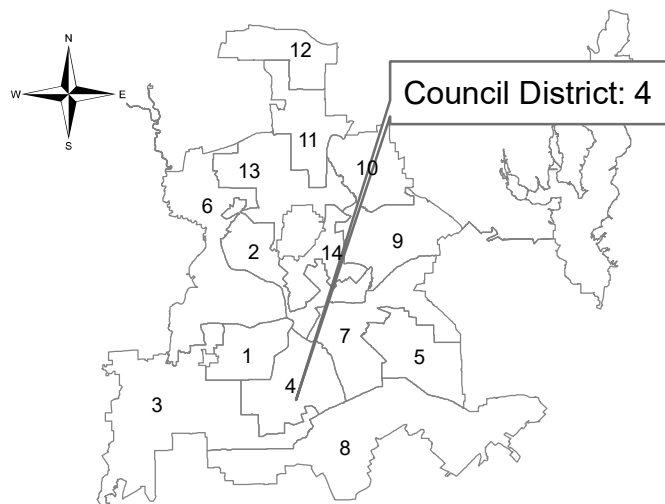
Oakley Avenue
from Harlandale Avenue to Lancaster Road



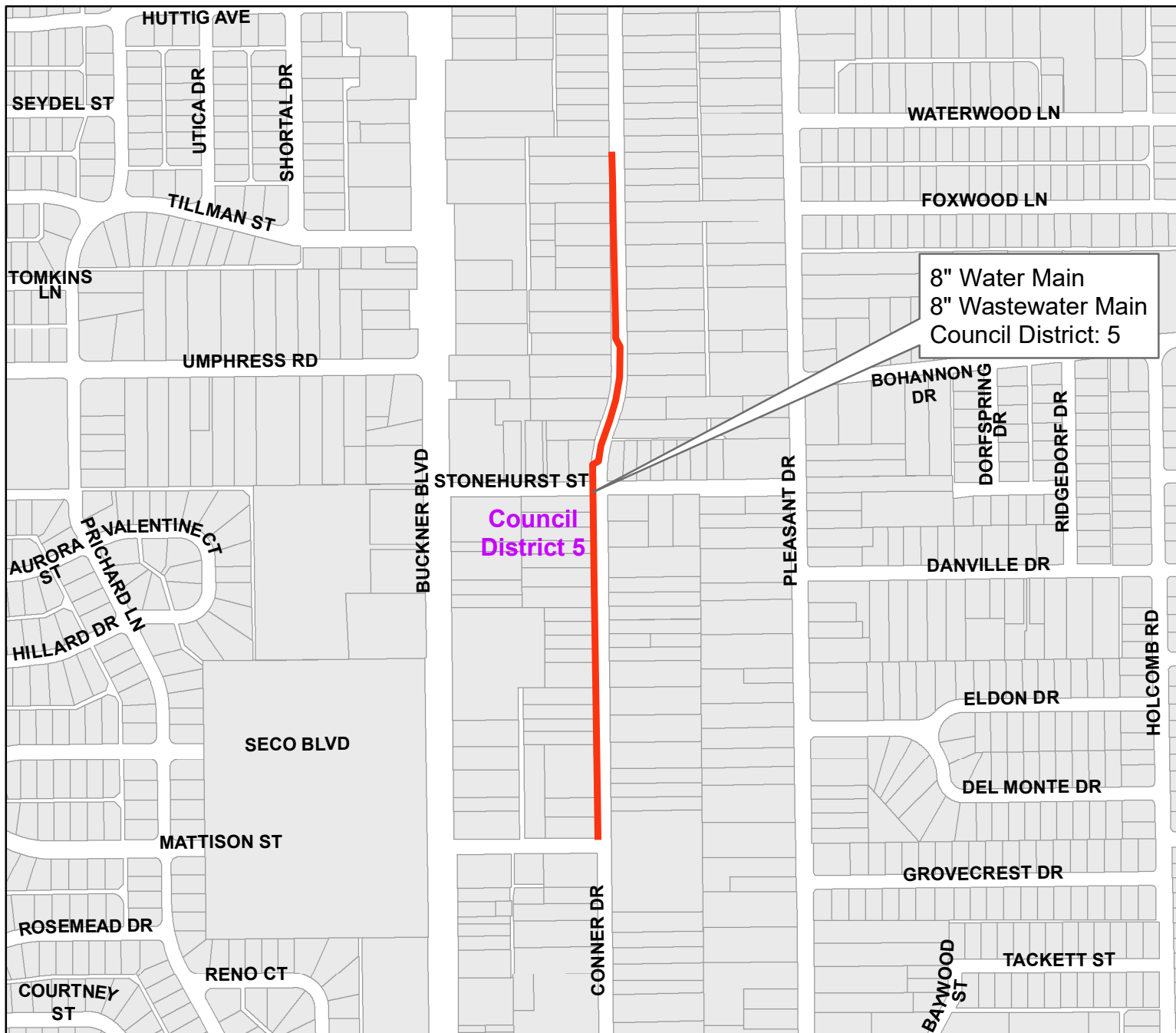
**Dallas Water Utilities
Contract No. 22-215/216
Water and Wastewater Main Installations
at 10 Locations**



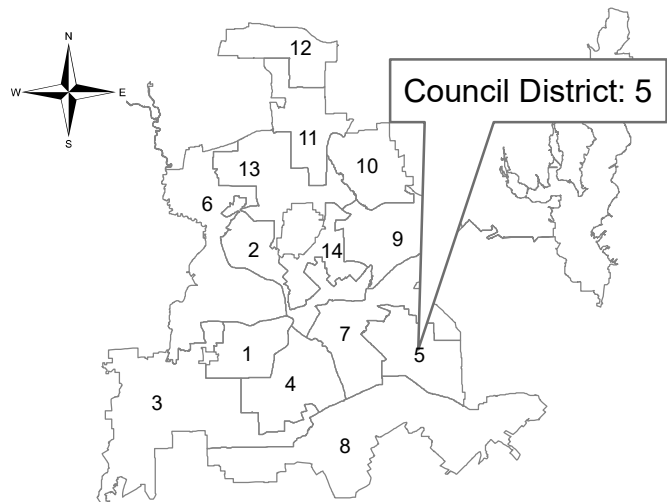
Overton Road
from Ramona Avenue to Lancaster Road



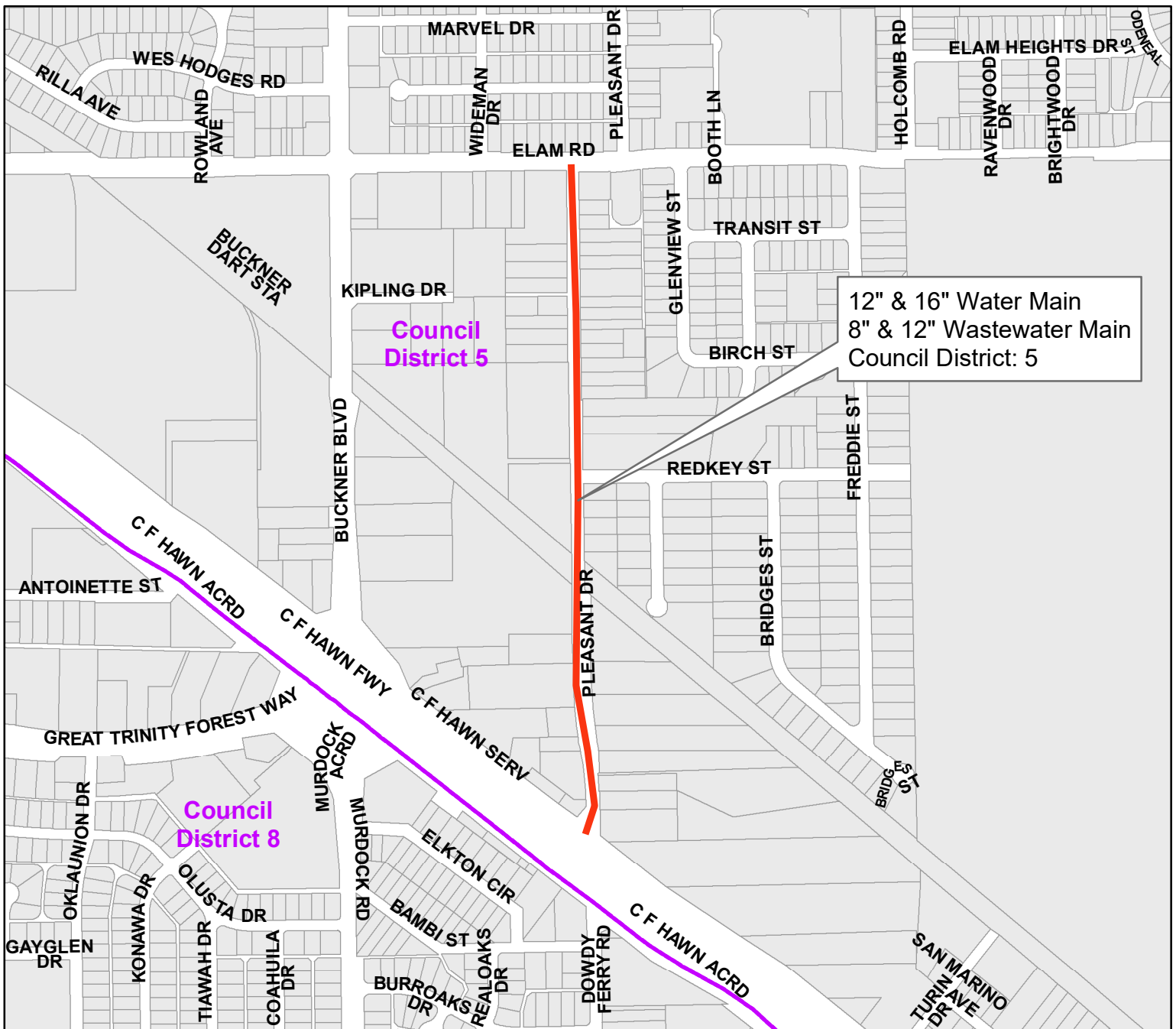
**Dallas Water Utilities
Contract No. 22-215/216
Water and Wastewater Main Installations
at 10 Locations**



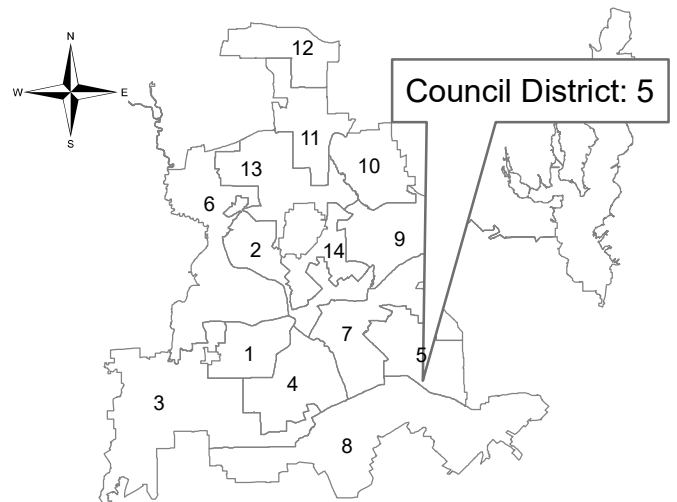
Conner Drive
from Grovecrest Drive north



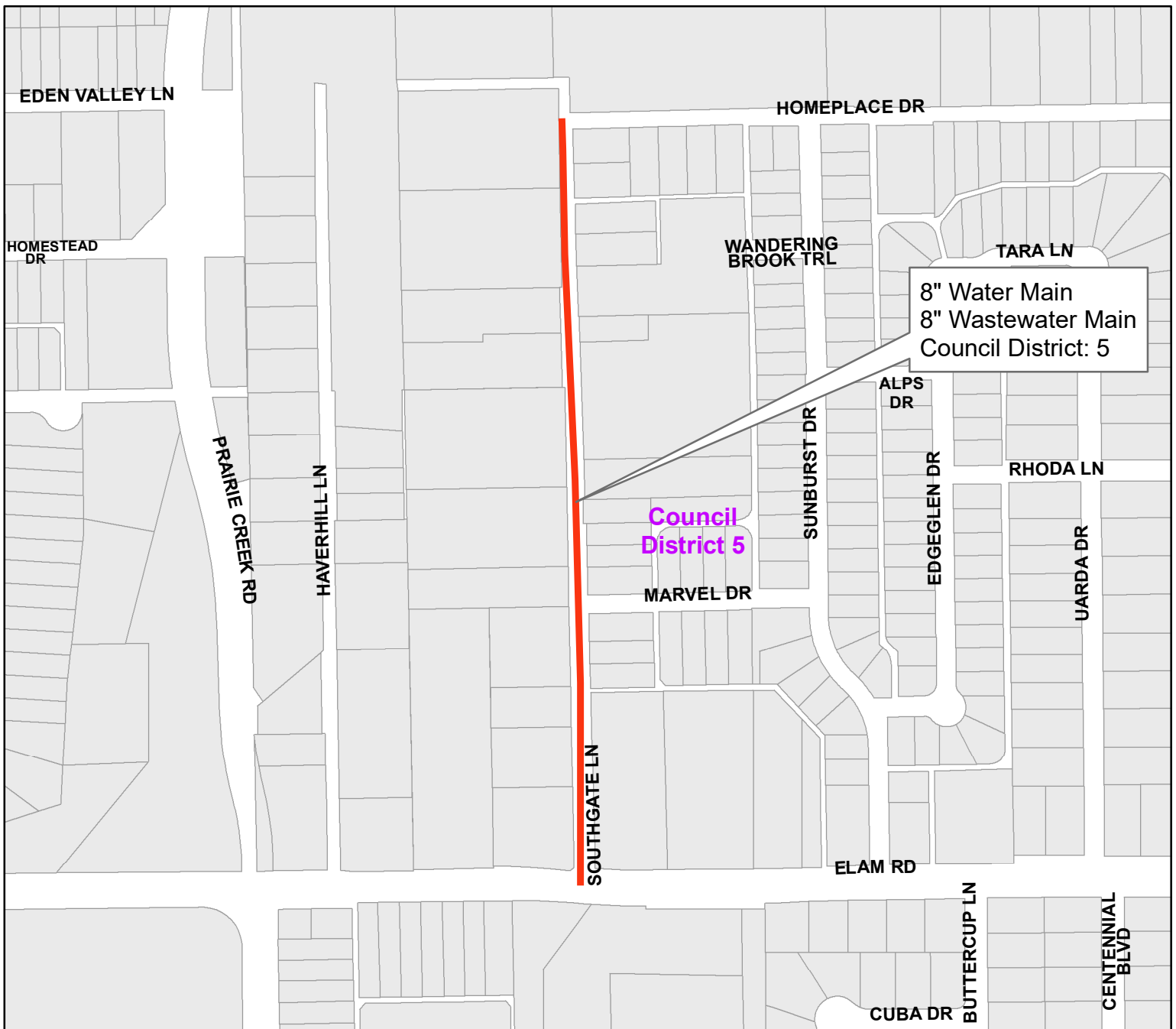
**Dallas Water Utilities
Contract No. 22-215/216
Water and Wastewater Main Installations
at 10 Locations**



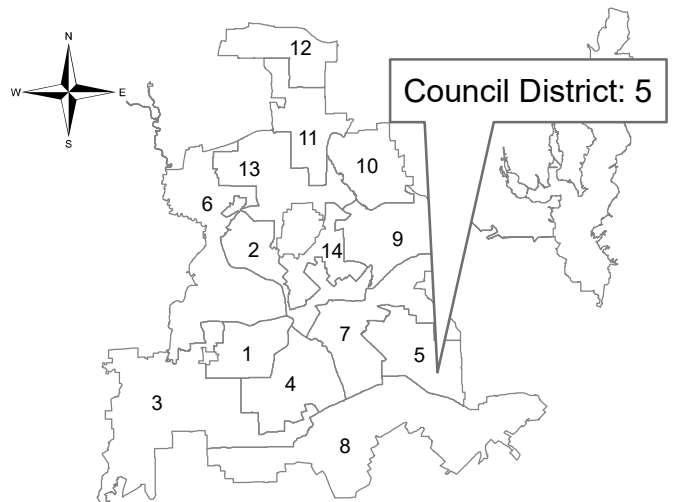
Pleasant Drive
from Elam Road to C.F. Hawn Freeway



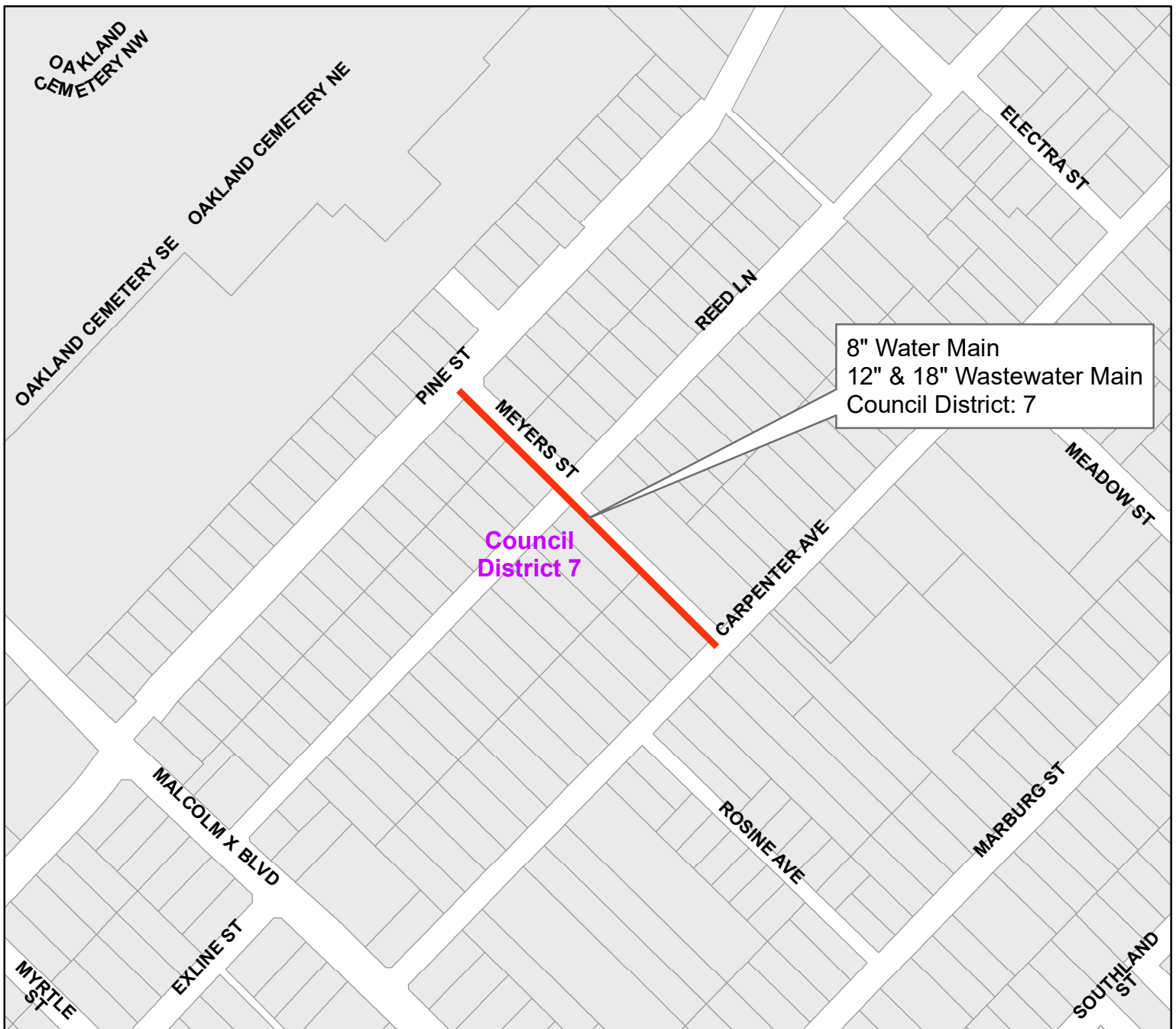
**Dallas Water Utilities
Contract No. 22-215/216
Water and Wastewater Main Installations
at 10 Locations**



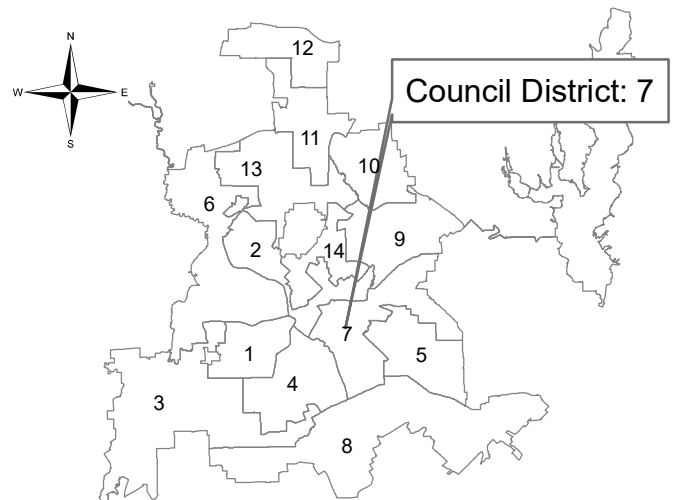
Southgate Lane
from Homeplace Drive to Elam Road



**Dallas Water Utilities
Contract No. 22-215/216
Water and Wastewater Main Installations
at 10 Locations**



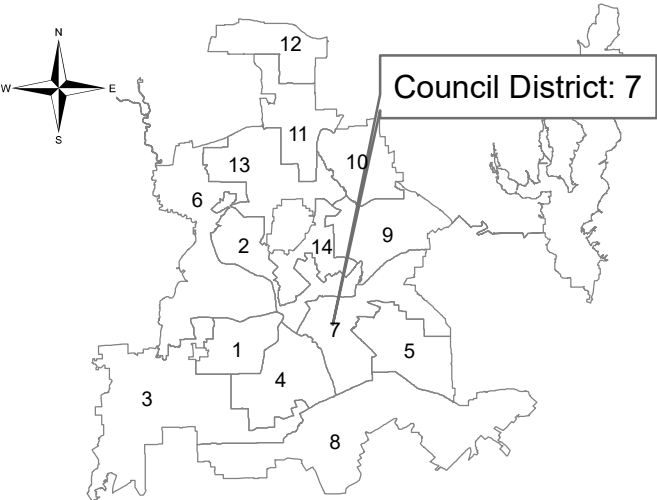
Meyers Street
from Pine Street to Carpenter Avenue



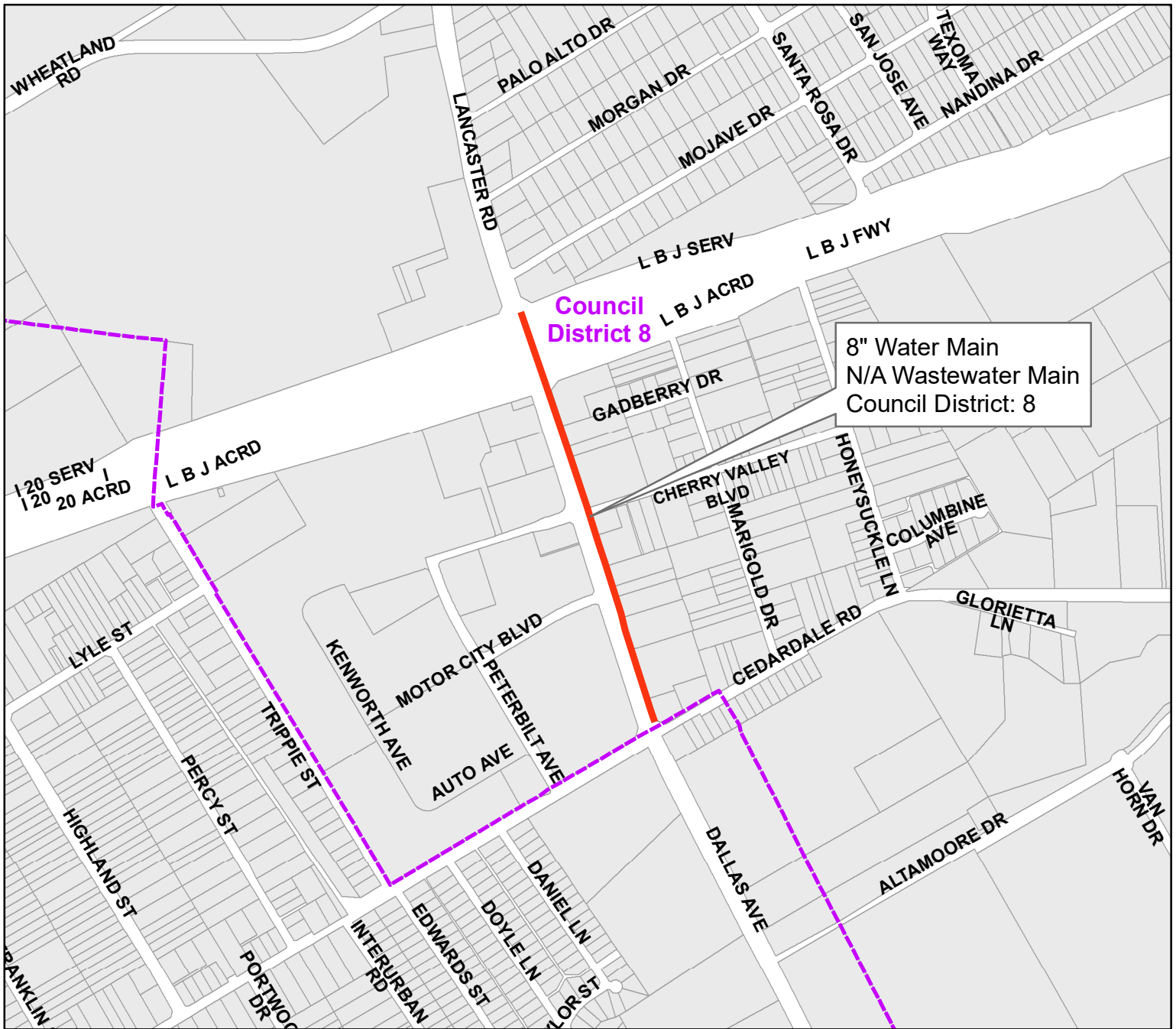
**Dallas Water Utilities
Contract No. 22-215/216
Water and Wastewater Main Installations
at 10 Locations**



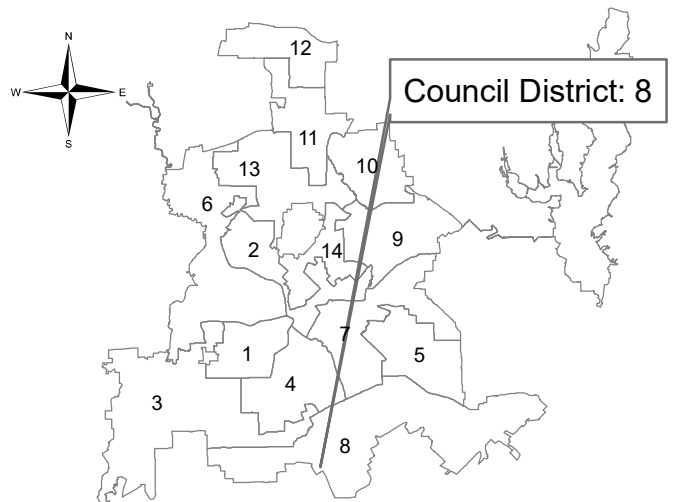
Reed Lane
from Malcolm X Boulevard to Meyers Street



Dallas Water Utilities
Contract No. 22-215/216
Water and Wastewater Main Installations
at 10 Locations



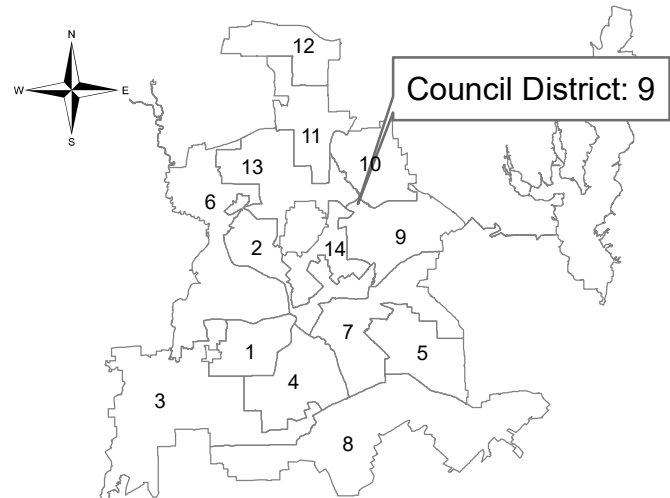
Lancaster Road
from LBJ Freeway to Cedardale Road



**Dallas Water Utilities
Contract No. 22-215/216
Water and Wastewater Main Installations
at 10 Locations**



Winchester Street
from Larmanda Street to Walling Lane



**Dallas Water Utilities
Contract No. 22-215/216
Water and Wastewater Main Installations
at 10 Locations**