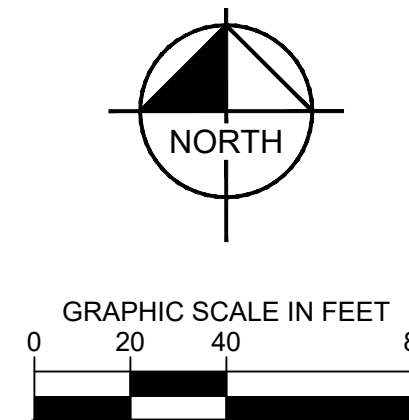
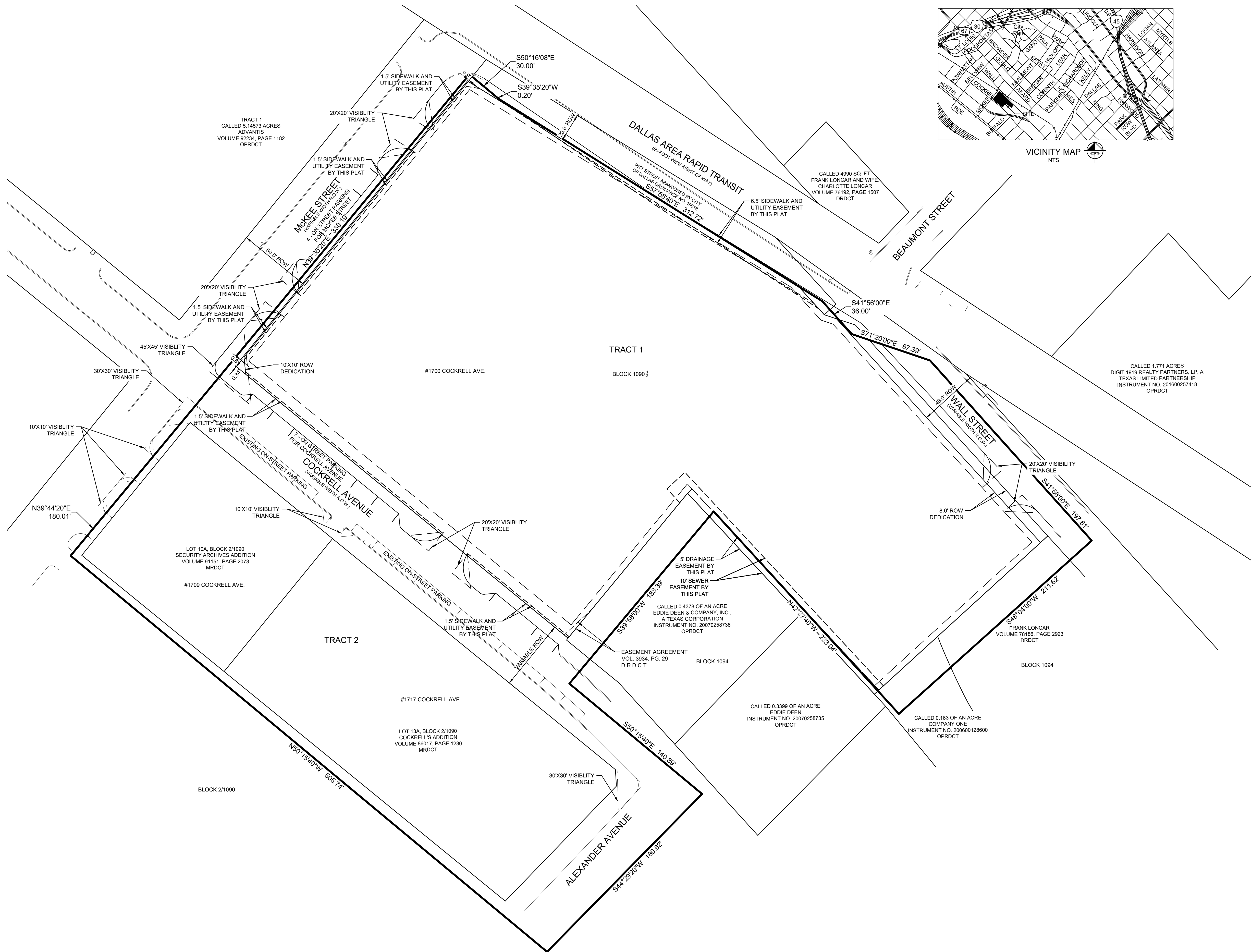


This document, together with the concepts and designs presented herein, as an instrument of service, is intended only for the specific purpose and client for which it was prepared. Reuse of and improper reliance on this document without written authorization and adaptation by Kinley-Horn and Associates, Inc., shall be without liability to Kinley-Horn and Associates, Inc.



SITE DATA TABLE	
ZONING	PD317, SUBDISTRICT 3
SAITE AREA	3.61 AC
USE	MULTIFAMILY DEVELOPMENT



801 CHERRY STREET, UNIT 11, SUITE 1300, FORT WORTH, TX 76102
PHONE: 817-335-6511
WWW.KIMLEY-HORN.COM TX F-928



KHA PROJECT 061289722	DATE APRIL 2022	SCALE AS SHOWN	DESIGNED BY KHA	DRAWN BY KHA	CHECKED BY KHA
--------------------------	--------------------	-------------------	--------------------	-----------------	-------------------

**INTOWN COCKRELL
CONDOMINIUMS**
COCKRELL AVENUE
DALLAS, TEXAS 75215

CONCEPT PLAN

SHEET NUMBER
XXX

No.	REVISIONS	DATE	BY
-----	-----------	------	----