

8915 S. HAMPTON BLOCK H/7557
17.573 ACRES ZONED IR SUP 1661

NUMBER OF CLASSROOMS	BASIS	SPACES REQUIRED	SPACES PROVIDED
24 ELEM CLASSROOMS	24 CR AT 1.5 SPACES PER CR	36 SPACES	36 SPACES
18 MS CLASSROOMS	18 CR AT 3.5 SPACES PER CR	63 SPACES	63 SPACES
24 HS CLASSROOMS	24 CR AT 9.5 SPACES PER CR	228 SPACES	228 SPACES
TOTAL	66 CLASSROOMS	327 SPACES	327 SPACES

HANDICAP	SPACES
LOCATED IN COMPLIANCE WITH TAS	8 SPACES

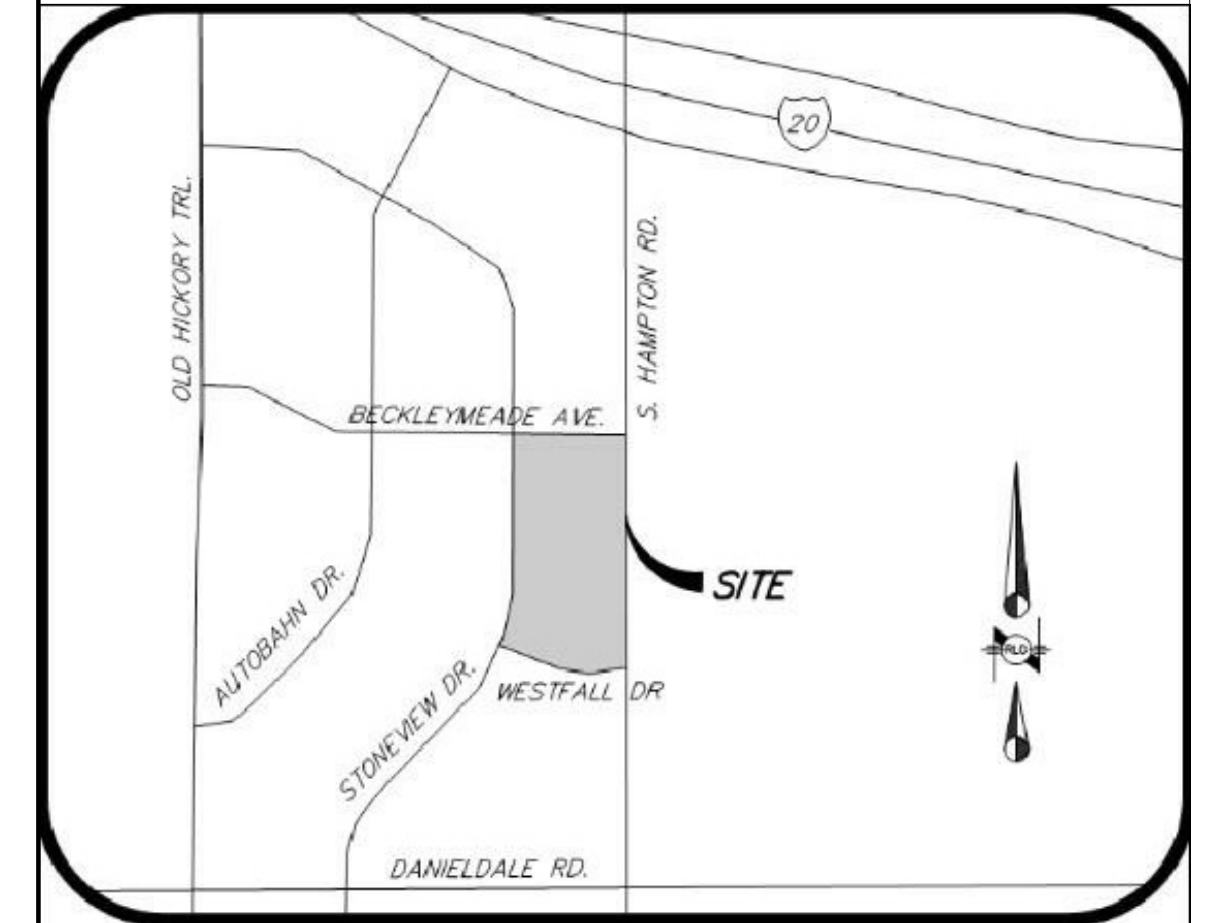
SITE	IMPERVIOUS COVERAGE
SITE AREA = 17,563 ACRES / 765,436 SF	BUILDING FOOTPRINT = 130,620 SF
BUILDING FLOOR AREA = 144,785 SF	SITE (PARKING, WALKS, AND TRACK) IMPERVIOUS COVERAGE = 266,820 SF
FLOOR TO AREA RATIO, 1.75 ALLOWED = 19	TOTAL IMPERVIOUS COVERAGE = 397,440 SF
HEIGHT: 36' STORIES: 2	IMPERVIOUS COVERAGE PERCENTAGE, 80% ALLOWED = 52%
LOT COVERAGE: 17%	

- 7.5 FT WIDE COMPACT SPACING AS ALLOWED INCLUDED - 15 COMPACT SPACES PROVIDED- 9% OF TOTAL PARKING COUNT

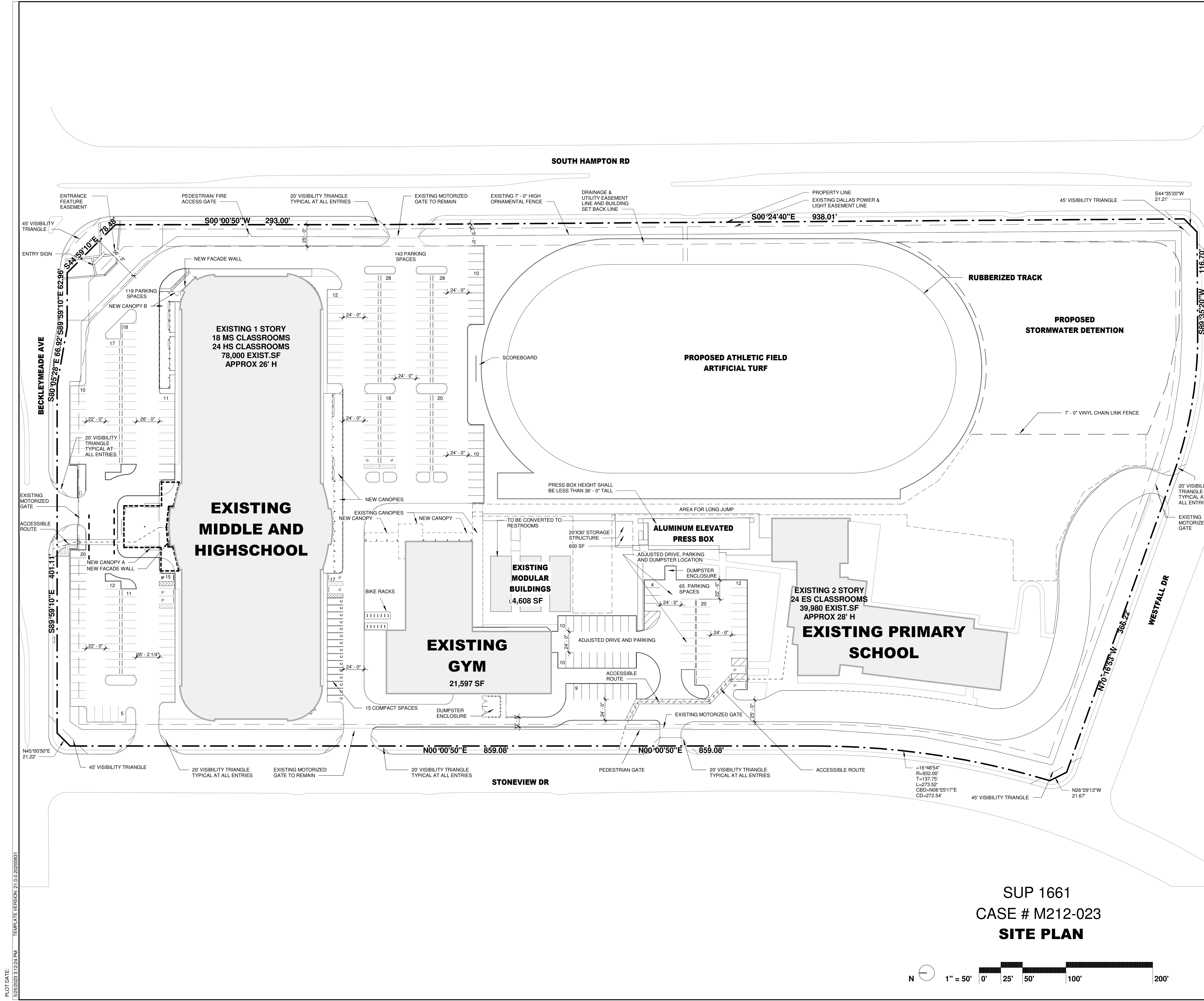
HAMPTON PREPARATORY SCHOOL RENOVATION UPLIFT EDUCATION

8915 S. HAMPTON RD.

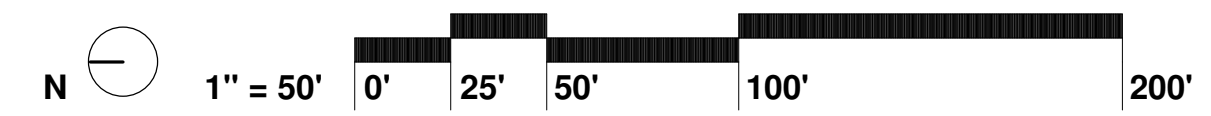
SCALE 1" = 50'-0" SITE PLAN 05/24/2023



Vicinity Map NTS



SUP 1661
CASE # M212-023
SITE PLAN



PLOT DATE: 5/29/2023 3:12:24 PM
TEMPLATE VERSION: 21.0.0.20200831